

BASIS OF BEARING

The line between the West quarter of section 19 and the Southwest corner of section 18 being N 0°24'06" E, as shown on survey no. 041-1996, filed in the office of the Union County Surveyor

SCALE: 1"=500'

REFERENCE MATERIAL

Union County monumentation records
 Survey number 041-1996
 Survey number 016-1998
 GLO contract number 382

LEGEND

- ⊙ Set a 2 1/2" x 30" aluminum pipe with cap as noted
- ⊕ Set a 5/8" x 30" iron rebar with a 2" aluminum cap.
- ⊙ Found Brass Cap monument, set by survey number 041-1996
- ⬠ Found 2 1/2" aluminum monument from original GLO survey evidence as per Union County Monumentation Records
- ⊙ Found a 2 1/2" aluminum monument, set by survey number 016-1998
- ⬠ Computed position, nothing set
- () Record bearing and distance from survey number 016-1998
- [] Record bearing and distance from survey number 041-1996
- { } Record bearing and distance from GLO contract number 382

Note:
 1/4 corner between sections 19 and 20 was not searched for. I show the bearing and distance between section corners for information only.

NARRATIVE

This survey was ordered by Gene Hardy. Gene wished to monument the East 1/16 between sections 19 and 30. The Northwest section corner and the West quarter corner were monumented by survey number 041-1996. The North quarter corner and the Northeast section corner were monumented by survey number 016-1998. For the Southeast section corner I found the original stone in a rock jack, set by GLO contract no. 382. Gene Hardy had seen the stone that was originally set to the Southwest Corner of Section 19. Mr. Hardy also related some history about the former existence of a County Road that ran East along the Section Line, that had fencing along both sides. After vacation of the road, and the construction of the road in its present position, the fence was moved to the center of the vacated road portion and maintained at that position. A culvert has recently been placed across the road at the location of the stone. We searched for the stone and found none. For the Southwest section corner I felt the best available evidence was the extension of the South section line fence and the centerline of the existing Hardy Road. I then proportioned the East 1/16 between section 19 and 30. I find no other unusual conditions with this survey.

REGISTERED
 PROFESSIONAL
 LAND SURVEYOR

Rick G. Robinson
 OREGON
 JULY 17, 1996
 RICK G. ROBINSON
 2219

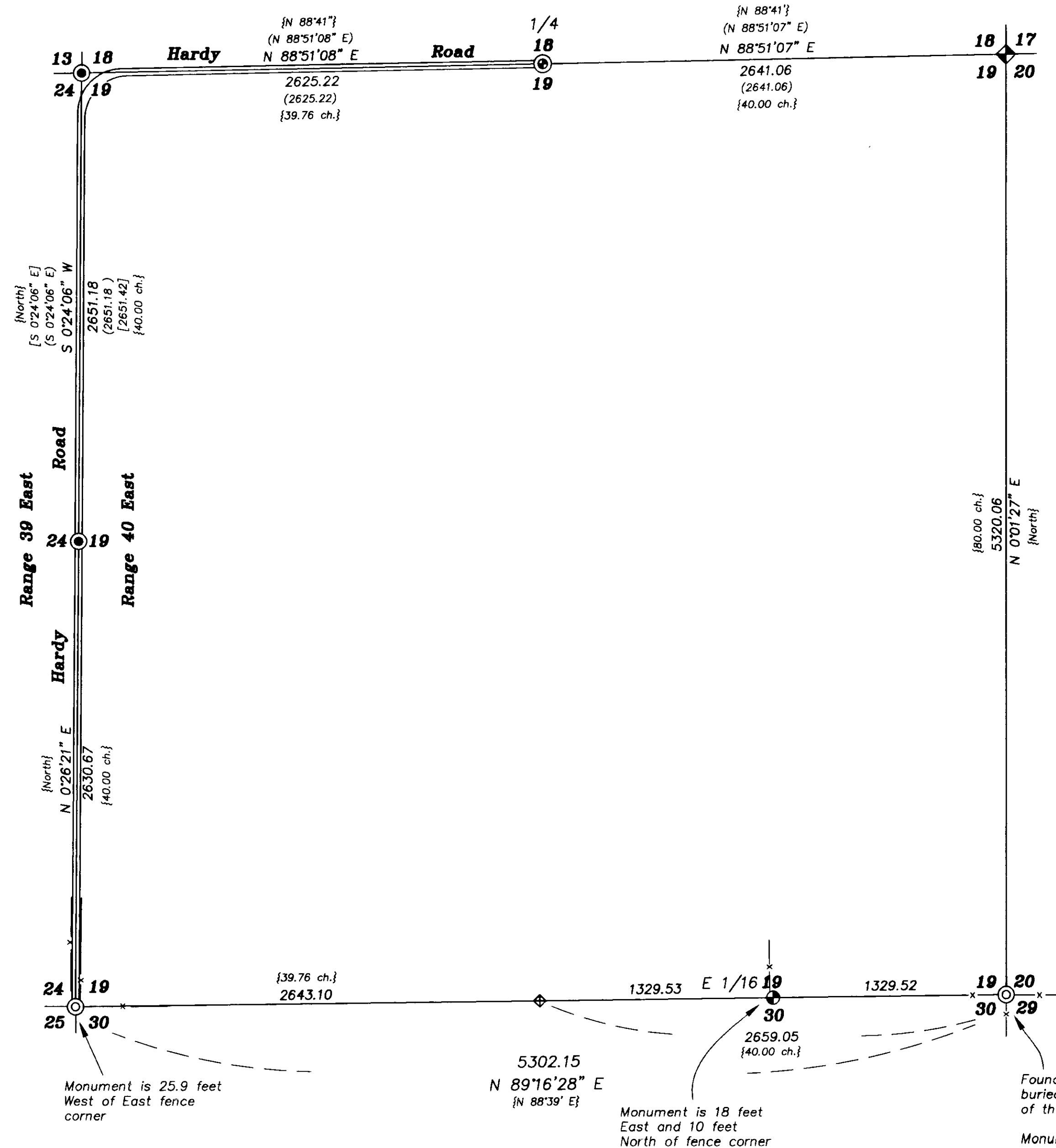
Renewal Date: Dec. 31, 2000

UNION COUNTY
 SURVEYOR
 Date Received 5-11-99
 Date Filed 5/15/99
 By *Gene T. Olson*
 File No. 014-1999

BAGETT, GRIFFITH & BLACKMAN
 2006 Adams Avenue, LaGrande, Oregon
 Map of Survey

Section 19 of Township 2 North, Range 40 East of the Willamette Meridian, Union County Oregon

SURVEYED FOR	Gene Hardy	
SURVEYED BY	R.G.R.	4-99
Scale: 1"=500'	Drawn by: G.W.E.	5-99



Survey Number 014-1999