

LEGEND

- SET 5/8" IRON ROD WITH 2" ALUMINUM CAP MARKED AS SHOWN
- FOUND 5/8" IRON ROD WITH YELLOW PLASTIC CAP MARKED "TOMPKINS SURVEYING", PER C.S. 012-1995
- FOUND PUBLIC LAND CORNER MONUMENT AS NOTED
- CALCULATED POSITION, MONUMENT NEITHER SET NOR FOUND
- (XX) RECORD MEASUREMENT PER C.S. 012-1995
- (XX) RECORD MEASUREMENT PER G.L.O. CONTRACT

REFERENCES

- C. S. 012-1995
- G.L.O. CONTRACT 451; RUFUS S. MOORE

UNION COUNTY SURVEYOR

Date Received 3-5-99

Date Filed 3-16-99

By R. ROBINSON, DEPUTY

File No. 011-1999

CORNER POSITION COMPUTED FROM FOUR FOUND REFERENCE MONUMENTS, 003-1995R

SEE DETAIL 2, PAGE 2

SEE DETAIL 7, PAGE 2

REGISTERED PROFESSIONAL LAND SURVEYOR

W.M.

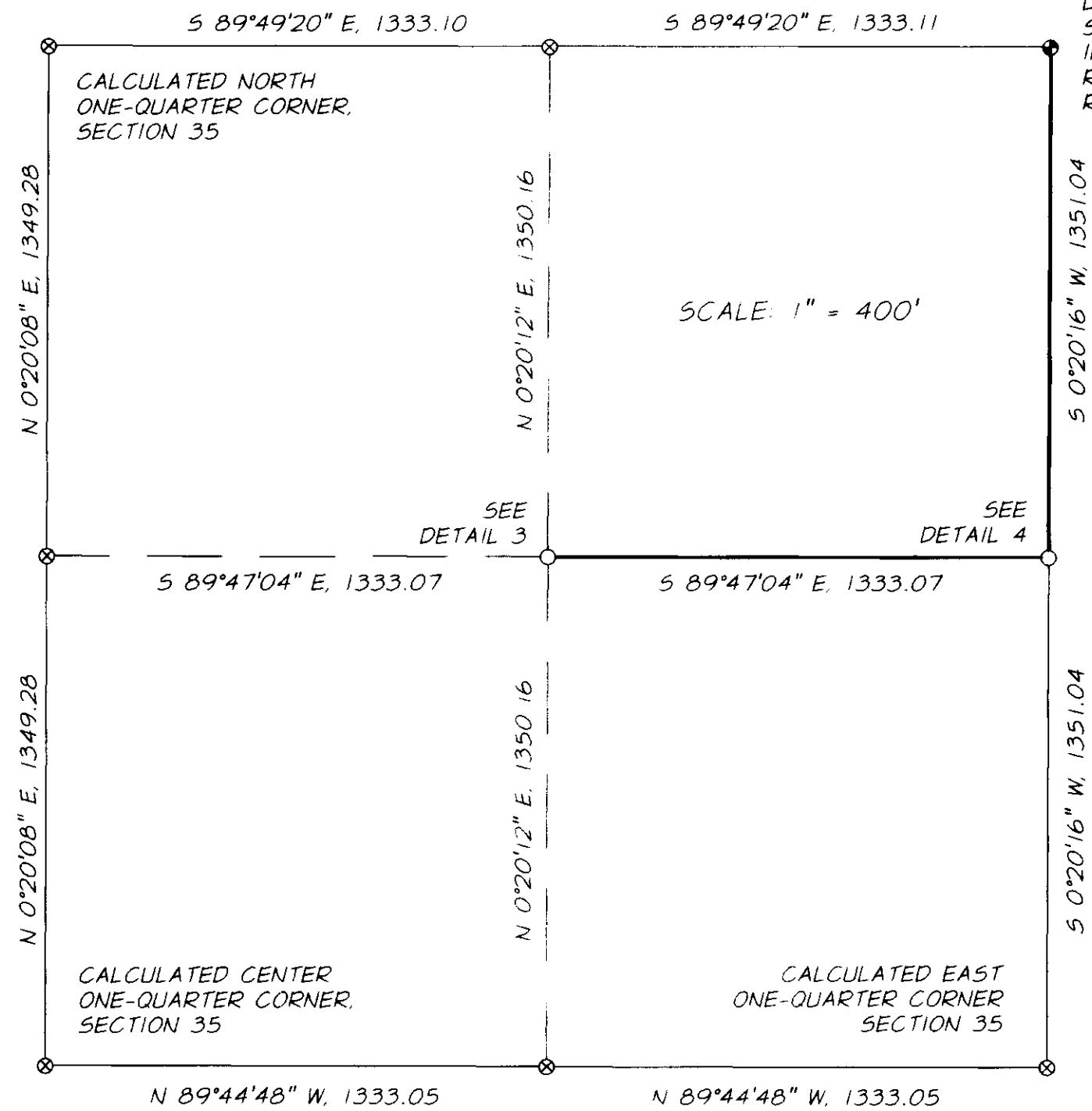
OREGON
JUL. 21, 1992
WILSON E. MCLENDON
2837

Reviews 12/31/00

MAP OF SURVEY THE EAST AND SOUTH LINES OF NE 1/4, NE 1/4 SECTION 35, TWN. 3 S., RA. 35 E., W. M.	
USDA, NATURAL RESOURCES CONSERVATION SERVICE	
SCALE: 1" = 500' DATE: MAR 1999 JOB NO. 2730-70	 anderson perry & associates, inc. <small>ENGINEERING - SURVEYING - MATERIALS TESTING</small> <small>LA GRANDE, OR. WALLA WALLA, WA. BAKER CITY, OR.</small>
SHEET 1/2	

DETAIL 1

THE SUBDIVISION OF THE N.E. 1/4 OF THE N.E. 1/4, SEC. 35



SCALE: 1" = 400'

NOTE 1

THE MONUMENT AT THE NORTHEAST CORNER OF SECTION 35 WAS FOUND TO BE A 5/8" IRON ROD WITH A YELLOW PLASTIC CAP MARKED "TOMPKINS SURVEYING" AND NOT A 1 1/2" ALUMINUM CAP STAMPED "PLS 2360" AS REPORTED IN REMONUMENTATION RECORD 004-1995R.

NARRATIVE

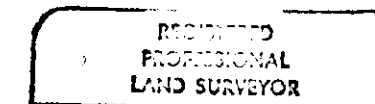
THIS SURVEY WAS PERFORMED AT THE REQUEST OF THE UNITED STATES DEPARTMENT OF AGRICULTURE, NATURAL RESOURCES CONSERVATION SERVICE TO MONUMENT AND POST THE EAST AND SOUTH LINES OF THE NORTHEAST ONE-QUARTER OF THE NORTHEAST ONE-QUARTER OF SECTION 35, TOWNSHIP 3 SOUTH, RANGE 35 EAST, WILLAMETTE MERIDIAN.

THE NORTHEAST AND SOUTHEAST CORNERS OF SECTION 35 WERE MEASURED TO DIRECTLY AND THE EAST LINE OF SAID SECTION WAS HELD AS THE BASIS OF BEARING FOR THIS SURVEY, PER C.S. 012-1995. THE LOCATION OF THE SOUTHWEST CORNER OF SECTION 35 WAS ESTABLISHED AT THE MEAN POSITION OF FOUR DISTANCE-DISTANCE INTERSECTIONS FROM THE FOUR FOUND REFERENCE MONUMENTS, PER REMONUMENTATION RECORD 003-1995R.

THE NORTHWEST CORNER OF SECTION 35 WAS SEARCHED FOR AND NOT FOUND. THE POSITION OF SAID NORTHWEST CORNER WAS ESTABLISHED BY DOUBLE PROPORTIONATE METHOD HOLDING THE NORTHEAST CORNER OF SECTION 35 AND THE NORTHWEST CORNER OF SECTION 34 TO CONTROL THE EAST COORDINATE OF THE LOST CORNER, AND THE NORTHWEST CORNER OF SECTION 25 AND THE SOUTHWEST CORNER OF SECTION 35 WERE HELD TO CONTROL THE NORTH COORDINATE OF THE LOST CORNER. THIS POSITION OF THE NORTHWEST CORNER OF SECTION 35 WAS CALCULATED TO CONTROL THE SECTION LINES OF SECTION 35, BUT NO MONUMENT WAS SET AT THIS POSITION.

THE SUBDIVISION OF SECTION 35 WAS PERFORMED IN ACCORDANCE WITH THE MANUAL OF INSTRUCTIONS FOR THE SURVEY OF PUBLIC LANDS OF THE UNITED STATES, 1973. THE NORTH ONE-SIXTEENTH CORNER BETWEEN SECTIONS 35 AND 36 AND THE NORTHEAST ONE-SIXTEENTH CORNER OF SECTION 35 WERE SET. THE EAST AND SOUTH LINES OF THE NORTHEAST ONE-QUARTER OF THE NORTHEAST ONE-QUARTER OF SECTION 35 WAS POSTED WITH SIX FOOT CARSONITE POSTS INTERVISIBLE ALONG THESE TWO LINES.

THE WORK WAS PERFORMED WITH A LEICA T-1610 THEODOLITE WITH DI-1600 DISTANCE INSTRUMENT, A SOKKIA SDR-33 DATA COLLECTOR AND TRIMBLE 4000SSI SERIES G. P. S. RECEIVERS.



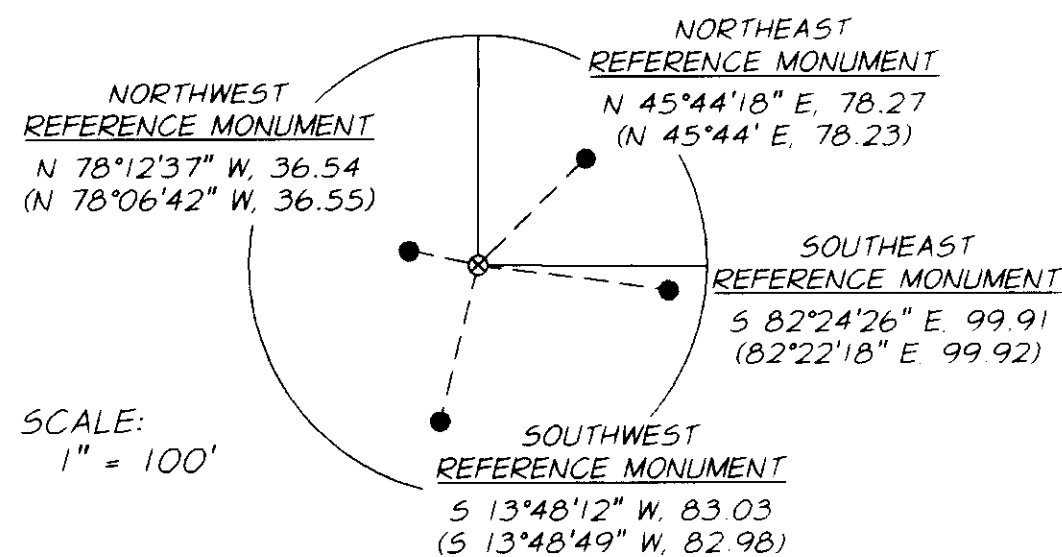
Reviews 12/31/00

LEGEND

- SET 5/8" IRON ROD WITH 2" ALUMINUM CAP MARKED AS SHOWN
- FOUND 5/8" IRON ROD WITH YELLOW PLASTIC CAP MARKED "TOMPKINS SURVEYING" PER C.S. 012-1995
- ⊙ FOUND PUBLIC LAND CORNER MONUMENT AS NOTED
- ⊗ CALCULATED POSITION, MONUMENT NEITHER SET NOR FOUND
- {XX} RECORD MEASUREMENT PER C.S. 012-1995
- {XX} RECORD MEASUREMENT PER G.L.O. CONTRACT

DETAIL 2

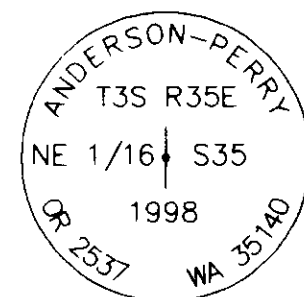
RECONSTRUCTION OF THE SOUTHWEST CORNER OF SECTION 35



SCALE: 1" = 100'

THE LOCATION OF THE SOUTHWEST CORNER OF SECTION 35 WAS ESTABLISHED AT THE MEAN COORDINATE POSITION OF FOUR DISTANCE/DISTANCE INTERSECTIONS USING RECORD MEASUREMENTS FROM REMONUMENTATION RECORD 003-1995R.

DETAIL 3



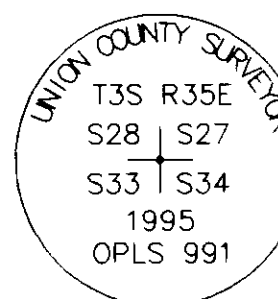
SET A 2 1/2 INCH ALUMINUM CAP ON A 5/8 INCH IRON ROD, 2 INCHES ABOVE GROUND AND SURROUNDED BY A 2 FOOT DIAMETER MOUND OF STONE WITH THE CAP MARKED AS SHOWN.

DETAIL 4



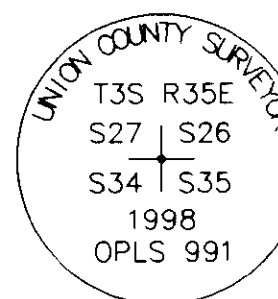
SET A 2 1/2 INCH ALUMINUM CAP ON A 5/8 INCH IRON ROD, 4 INCHES ABOVE GROUND AND SURROUNDED BY A 3 FOOT DIAMETER MOUND OF STONE WITH THE CAP MARKED AS SHOWN.

DETAIL 5



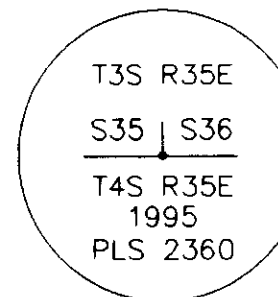
A 2 1/2 INCH ALUMINUM CAP ON A 2 1/2 INCH ALUMINUM PIPE, 6 INCHES ABOVE GROUND AND SURROUNDED BY A 3 FOOT DIAMETER MOUND OF STONE.

DETAIL 6



A 2 1/2 INCH ALUMINUM CAP ON A 2 1/2 INCH ALUMINUM PIPE, 6 INCHES ABOVE GROUND AND SURROUNDED BY A 3 FOOT DIAMETER MOUND OF STONE.

DETAIL 7

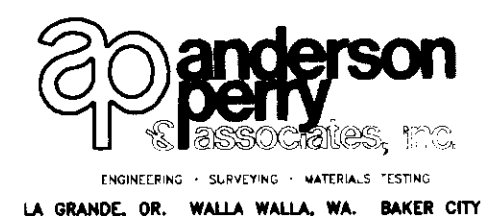


A 2 1/2 INCH ALUMINUM CAP ON A 2 1/2 INCH ALUMINUM PIPE AT GROUND LEVEL

MAP OF SURVEY
THE EAST AND SOUTH LINES OF NE 1/4, NE 1/4 SECTION 35, TWN. 3 S., RA. 35 E., W. M..

USDA, NATURAL RESOURCES CONSERVATION SERVICE 3990 MIDWAY LANE BAKER CITY, OREGON 97814

SCALE: VARIES
DATE: MAR 1999
JOB NO. 2730-70



SHEET 2/2