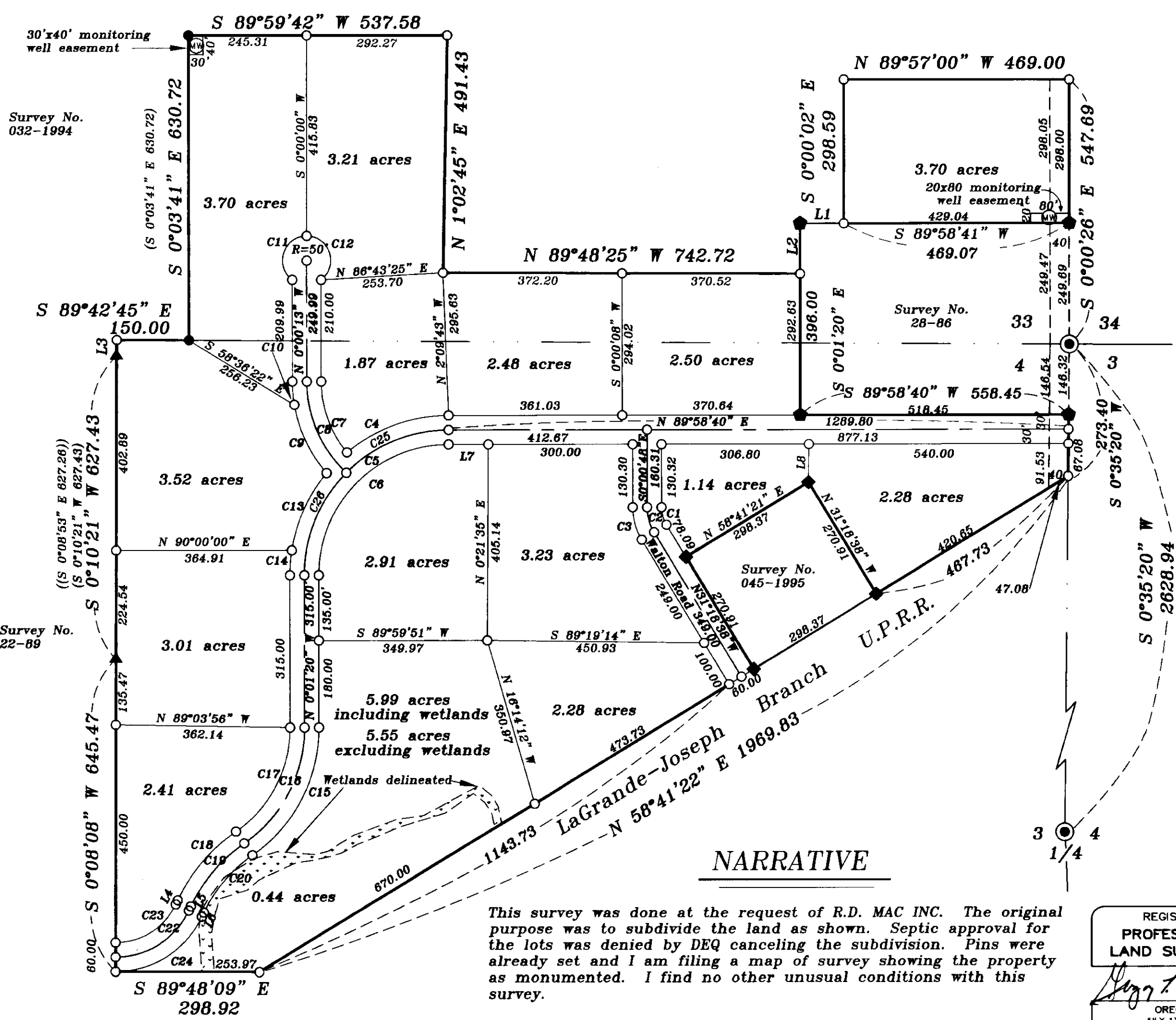




# BASIS OF BEARING

Forward bearing as published by the U.S.C. and G.S. from Δ COLLEGE to Δ VALLEY Dated 1946.

SCALE: 1"=200'



## NARRATIVE

This survey was done at the request of R.D. MAC INC. The original purpose was to subdivide the land as shown. Septic approval for the lots was denied by DEQ canceling the subdivision. Pins were already set and I am filing a map of survey showing the property as monumented. I find no other unusual conditions with this survey.

REGISTERED PROFESSIONAL LAND SURVEYOR  
GREGORY T. BLACKMAN  
OREGON JULY 13, 1973  
991  
Renewal Date: Dec. 31, 1999

UNION COUNTY SURVEYOR  
Date Received 5/18/99  
Date Filed 7/17/99  
By R. Robinson Deputy  
File No. 002-1999

**BAGETT, GRIFFITH & BLACKMAN**  
2006 Adams Avenue, LaGrande, Oregon  
Map of Survey  
Sited in the South half of the Southeast quarter of Section 33, Township 2 South, Range 38 East, and the North half of the Northeast quarter of Section 4 Township 3 South, Range 38 East of the Willamette Meridian.  
SURVEYED FOR R.D. Mac Incorporated  
SURVEYED BY G.T.B. 5/99  
Scale: 1"=200' Drawn by: G.W.E. 5/99

## CURVE DATA

C1	Δ = 31°18'38" R = 70.00 L = 38.25 LC = 37.78 S = S15°39'19"E	C11	Δ = 143°07'48" R = 50.00 L = 124.90 LC = 94.87 S = S18°26'06"W	C20	Δ = 30°05'32" R = 300.00 L = 157.58 LC = 155.76 S = S40°25'00"W
C2	Δ = 31°18'38" R = 100.00 L = 54.65 LC = 53.97 S = S15°39'19"E	C12	Δ = 143°06'30" R = 50.00 L = 124.89 LC = 94.86 S = N18°26'45"W	C21	Δ = 33°12'27" R = 138.09 L = 80.03 LC = 78.92 S = N41°58'27"E
C3	Δ = 31°18'38" R = 190.00 L = 71.04 LC = 70.16 S = S15°39'19"E	C13	Δ = 30°53'40" R = 330.00 L = 177.94 LC = 175.79 S = S24°18'02"W	C22	Δ = 64°49'37" R = 188.09 L = 190.18 LC = 180.20 S = N67°47'02"E
C4	Δ = 30°45'51" R = 330.00 L = 229.03 LC = 224.46 S = S70°05'45"W	C14	Δ = 08°52'33" R = 330.00 L = 51.12 LC = 51.07 S = S04°24'56"W	C23	Δ = 64°51'15" R = 138.09 L = 156.31 LC = 148.09 S = N67°47'51"E
C5	Δ = 90°00'00" R = 300.00 L = 471.24 LC = 424.26 S = S44°58'40"W	C15	Δ = 55°29'08" R = 320.00 L = 309.89 LC = 297.92 S = N27°43'13"E	C24	Δ = 64°49'38" R = 198.09 L = 224.13 LC = 212.36 S = N57°47'03"E
C6	Δ = 90°00'00" R = 270.00 L = 424.12 LC = 381.84 S = S44°58'40"W	C16	Δ = 55°29'06" R = 290.00 L = 280.83 LC = 269.99 S = N27°43'13"E	C25	Δ = 45°08'13" R = 300.00 L = 236.33 LC = 230.26 S = S67°24'35"W
C7	Δ = 39°50'13" R = 230.00 L = 159.92 LC = 156.71 S = S19°55'07"E	C17	Δ = 55°29'06" R = 260.00 L = 251.78 LC = 242.06 S = N27°43'13"E	C26	Δ = 44°51'58" R = 300.00 L = 234.91 LC = 228.95 S = S22°24'36"W
C8	Δ = 46°44'59" R = 260.00 L = 212.14 LC = 206.31 S = S23°22'29"E	C18	Δ = 30°05'32" R = 380.00 L = 189.08 LC = 186.91 S = S40°25'00"W		
C9	Δ = 31°18'14" R = 290.00 L = 158.44 LC = 156.48 S = S25°15'34"E	C19	Δ = 30°05'32" R = 330.00 L = 173.32 LC = 171.33 S = S40°25'00"W		
C10	Δ = 09°36'26" R = 290.00 L = 48.63 LC = 48.57 S = S04°48'13"E				

## LINE DATA

L1	91.03
L2	N88°58'29"E
L3	103.37
L4	S00°01'20"E
L5	33.08
L6	S00°56'41"W
L7	9.50
L8	N25°22'14"E
L9	9.50
L10	N25°22'14"E
L11	9.50
L12	S25°22'14"W
L13	82.87
L14	S89°58'39"W
L15	78.49
L16	N00°47'26"E

## LEGEND

- Found brass cylinder set in concrete for Section corner as per County monumentation records.
- ◆ Found 5/8" rebar with plastic cap marked BGB Survey Marker, set by survey Number 045-1995.
- Found 5/8" rebar with plastic cap marked BGA Survey Marker, set by survey Number 032-1994.
- ◆ Found 5/8" rebar with plastic cap marked BGA Survey Marker, set by Survey Number 28-86.
- ▲ Found 5/8" rebar set by Survey Number 22-89.
- Set 5/8"x30" iron pin with plastic cap marked BGB SURVEY MARKER.
- (( )) Record bearing and distance from survey No. 022-1989
- ( ) Record bearing and distance from survey No. 032-1994
- Centerline
- - - - - Existing access easement
- ⊙ Monitoring well

Survey Number 002-1999