

CLARK CREEK/EAGLE CAP WILDERNESS SURVEY

WALLOWA-WHITMAN NATIONAL FOREST

COVER SHEET

NOTES

BASIS OF BEARING WAS SOLAR OBSERVATION TAKEN ON 09/27/1993 AT A GPS CONTROL STATION ROCK POND 1899 FEET SOUTH AND 693 FEET WEST OF THE NE CORNER OF SECTION 8. THE MAGNETIC DECLINATION FOR THIS SURVEY IS 18 1/2' EAST AS DETERMINED FROM A U.S.G.S. TOPO MAP FOR THIS PROJECT AREA.

THIS SURVEY REPRESENTS A RECORD OF THE PARTIAL ORIGINAL ESTABLISHMENT OF THE EAGLE CAP WILDERNESS AND A PORTION OF T 1 & 2 S, R 41 E, W.M., UNION COUNTY, OREGON.

THIS SURVEY WAS PERFORMED AT THE REQUEST OF THE FOREST SUPERVISOR, WALLOWA-WHITMAN NATIONAL FOREST, BAKER CITY, OREGON.

THE PURPOSE OF THIS SURVEY WAS TO DETERMINE THE EAGLE CAP WILDERNESS BOUNDARY ADMINISTERED BY THE U.S. FOREST SERVICE THROUGH A PORTION OF T 1 AND 2 S, R 41 E, W.M. AND TO POST TO STANDARD THOSE BOUNDARIES.

THE PROCEDURES USED IN THIS SURVEY WERE IN ACCORDANCE WITH THE CONTRACT SPECIFICATIONS, THE 1973 B-L-M MANUAL AND STATE LAW, RESULTING IN AN ERROR OF CLOSURE OF 1 AND 5000 OR BETTER.

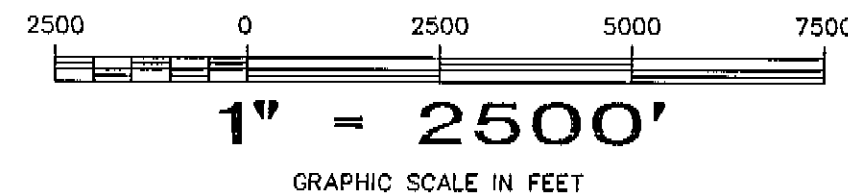
THE EQUIPMENT USED ON THIS SURVEY IS KEPT ADJUSTED AND STANDARDIZED. WE USED A SOKKIA SET 2, 3 OR 4 TOTAL STATION AND LEAP FROGGED A COMPLETE SET UP AT EACH TRAVERSE STATION OR CONTROLLING CORNER. TRIMBLE 4000SE STATIC GPS RECEIVERS WERE USED ALONG WITH REV. E TRIMVEC SOFTWARE TO CLOSE THE CONTROL TRAVERSE OF THIS SURVEY.

LOST OR OBLITERATED CORNERS WERE REESTABLISHED IN ACCORDANCE WITH THE B-L-M MANUAL, A COMPLETE DESCRIPTION OF THE CORNERS FOUND, SET OR REESTABLISHED CAN BE FOUND ON PAGES 7 & 8 OF THIS RECORD OF SURVEY. THE FIELD NOTES FOR THIS SURVEY ARE CONTAINED IN BOOK 1, PAGES 1 - 123, TITLED: CLARK CADASTRAL SURVEY, 1993 - 1994.

LEGEND

- FOUND ORIGINAL EVIDENCE, SET A 3" DIAM. U.S.F.S. ALUMINUM CAPPED PIPE, 30" LONG, WITH MAGNET, MARKED PER B-L-M MANUAL, SEE TYPICAL CAP FOR STANDARD MARKINGS
- FOUND A 3" DIAM. ALUMINUM CAPPED PIPE MONUMENT, SEE CORNER NOTES
- FOUND A U.S.G.S. BRASS TABLET CONTROL STATION
- ▲ FOUND A 3" DIAM. ALUMINUM TABLET MONUMENT GPS CONTROL STATION
- ⊙ SET A 3" DIAM. U.S.F.S. ALUMINUM CAPPED PIPE, 30" LONG, WITH MAGNET, MARKED PER B-L-M MANUAL, SEE TYPICAL CAP FOR STANDARD MARKINGS
- [] RECORD BEARING AND/OR DISTANCE, G-L-O, 1898
- (ECW) = NATIONAL FOREST SYSTEM LANDS DESIGNATED AS EAGLE CAP WILDERNESS AREA ARE POSTED TO STANDARD

NFSL NATIONAL FOREST SYSTEM LANDS



A PORTION OF
T 1 S R 41 E W.M.
AND
T 2 S R 41 E W.M.
UNION COUNTY, OREGON

RECORD OF SURVEY

RES LAND SURVEYS, INC. 8335 N. PLACITA DADIVOSO TUCSON, ARIZONA 85704

HISTORY OF SURVEYS

TOWNSHIP 1 SOUTH, RANGE 41 EAST:
1898: A. GENSNER SURVEYED THE SUBDIVISIONAL LINES OF THE TOWNSHIP.

TOWNSHIP 2 SOUTH, RANGE 41 EAST:
1898: A. GENSNER SURVEYED THE SUBDIVISIONAL LINES OF THE TOWNSHIP.

EAGLE CAP WILDERNESS LEGAL DESCRIPTION
1987: JAMES F. TORRENCE, USFS, REGIONAL FORESTER, DESCRIPTION OF WILDERNESS BOUNDARY

EAGLE CAP WILDERNESS GPS SURVEY
1992: ROGER GREEN, LS, USFS, PERFORMED A GEODETIC CONTROL SURVEY

SURVEYORS CERTIFICATE

THIS PLAT CORRECTLY REPRESENTS A SURVEY MADE BY ME OR UNDER MY DIRECTION IN CONFORMANCE WITH THE STATUTES OF OREGON AND AT THE REQUEST OF THE U.S.D.A. FOREST SERVICE, WALLOWA-WHITMAN NATIONAL FOREST, DURING THE MONTHS OF AUGUST 1993 THRU SEPTEMBER 1994
RONALD E. STOLL, LS. 2058.

UNION COUNTY SURVEYOR

Date Received 12/18/98

Date Filed 12/18/98

By R. Robinson, Deputy

File No. 052-1998

REGISTERED PROFESSIONAL LAND SURVEYOR

RM & Stoll 10/98

OREGON
JULY 15, 1983
RONALD E. STOLL
2058

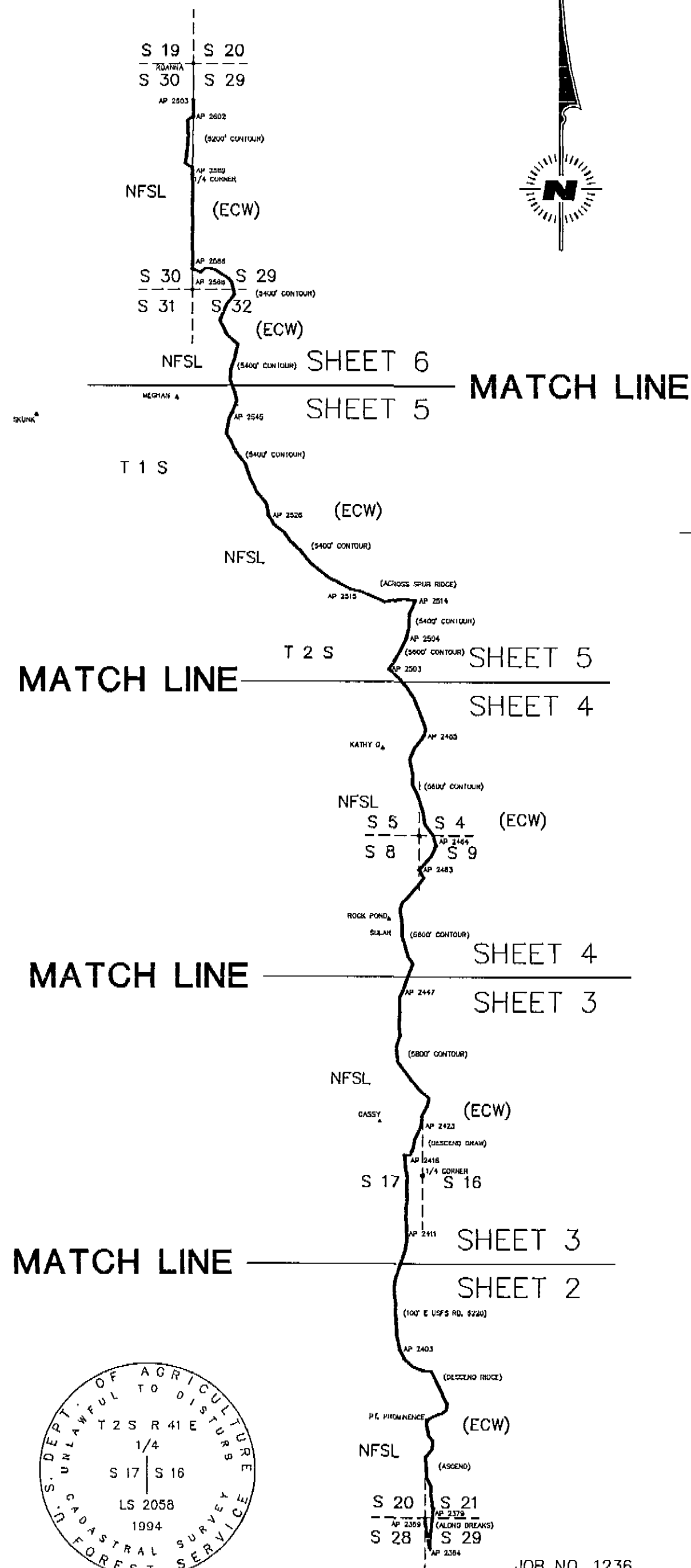
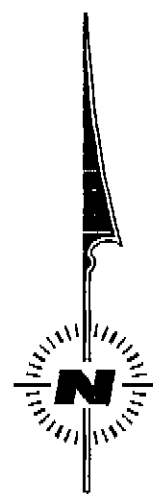
RONALD E. STOLL, LS 2058

EXAMINED AND ACCEPTED FOR THE U.S. FOREST SERVICE THIS 8th DAY OF DECEMBER, 1998.

Roger E. Green COR

I CERTIFY THAT THIS SURVEY WAS PERFORMED AT THE REQUEST OF THE WALLOWA-WHITMAN NATIONAL FOREST SUPERVISOR.

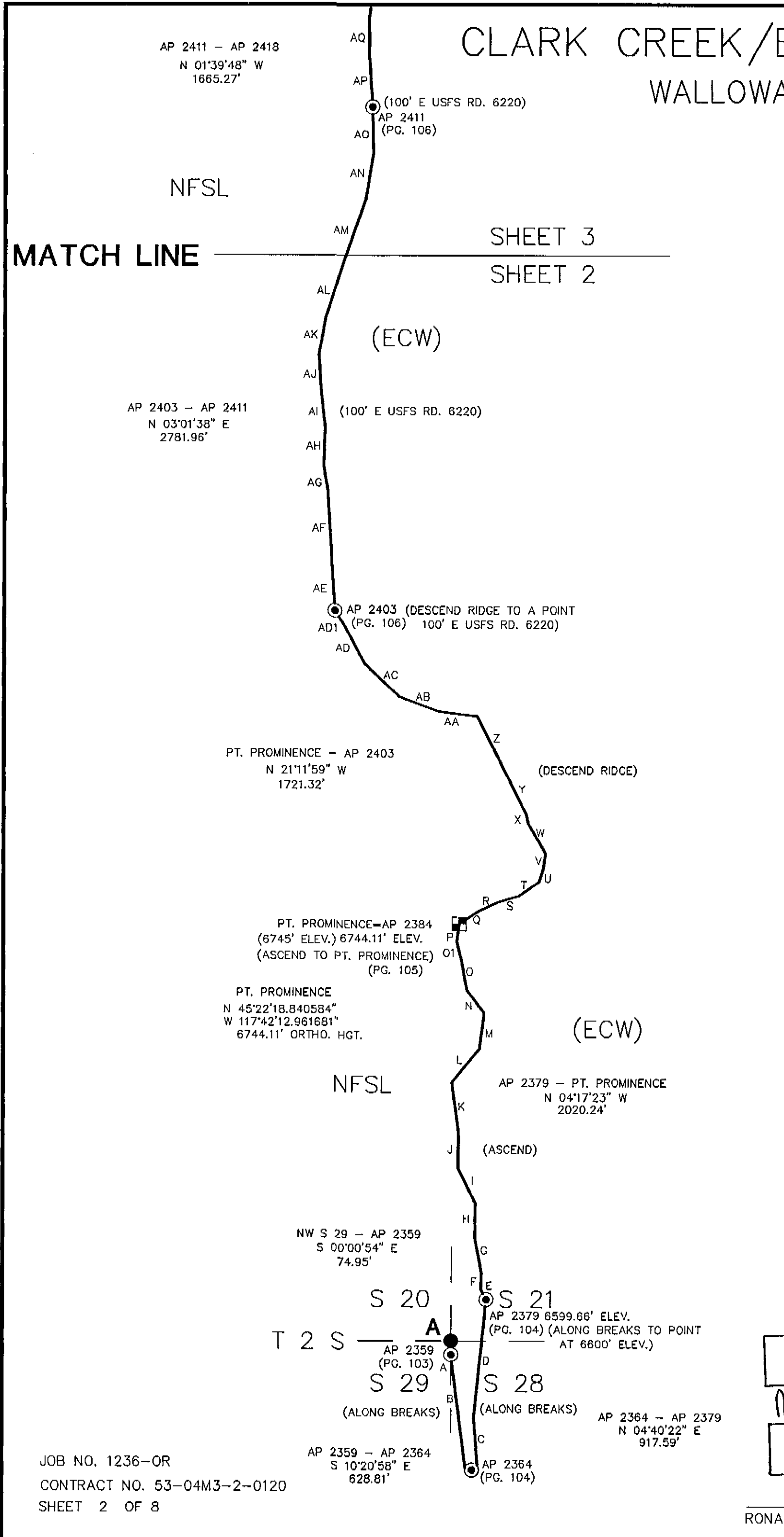
Roger E. Wood SIGNATURE 12-16-98 DATE



JOB NO. 1236
CONTRACT NO. 53-04M3-2-0120
SHEET 1 OF 8

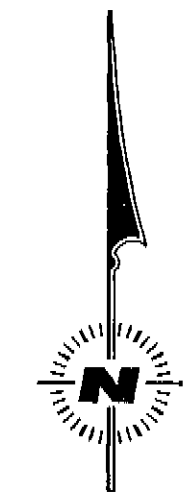
CLARK CREEK/EAGLE CAP WILDERNESS SURVEY

WALLOWA-WHITMAN NATIONAL FOREST



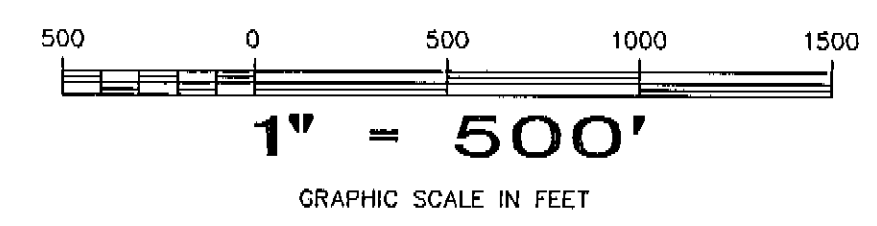
LINE TABLE

| LINE | DIRECTION | DISTANCE |
|------|------------|----------|
| A | S 06°33' E | 72.0' |
| B | S 10°50' E | 556.9' |
| C | N 02°00' E | 281.2' |
| D | N 05°51' E | 636.8' |
| E | N 28°32' W | 59.5' |
| F | N 01°28' E | 90.8' |
| G | N 10°55' W | 194.4' |
| H | N 01°07' E | 180.0' |
| I | N 26°26' W | 209.7' |
| J | N 00°17' E | 195.2' |
| K | N 07°56' W | 268.1' |
| L | N 39°10' E | 234.4' |
| M | N 07°19' E | 194.4' |
| N | N 37°51' W | 151.3' |
| O | N 10°32' W | 160.1' |
| O1 | N 13°35' W | 110.1' |
| P | N 07°51' E | 94.5' |
| Q | N 56°08' E | 134.0' |
| R | N 65°22' E | 108.3' |
| S | N 73°00' E | 118.2' |
| T | N 55°30' E | 126.1' |
| U | N 18°36' E | 74.9' |
| V | N 08°11' E | 80.6' |
| W | N 29°56' W | 185.8' |
| X | N 13°38' W | 51.7' |
| Y | N 26°06' W | 228.9' |
| Z | N 26°47' W | 362.0' |
| AA | N 83°07' W | 206.1' |
| AB | N 69°37' W | 228.4' |
| AC | N 47°01' W | 253.5' |
| AD | N 27°51' W | 238.9' |
| AD1 | N 32°49' W | 90.2' |
| AE | N 04°03' W | 225.0' |
| AF | N 03°27' W | 415.2' |
| AG | N 09°12' W | 139.2' |
| AH | N 02°05' E | 204.0' |
| AI | N 06°32' W | 191.0' |
| AJ | N 03°37' W | 203.2' |
| AK | N 10°17' E | 201.4' |
| AL | N 17°36' E | 242.7' |
| AM | N 19°16' E | 426.9' |
| AN | N 09°19' E | 255.3' |
| AO | N 01°16' W | 245.2' |
| AP | N 03°35' W | 264.9' |
| AQ | N 00°22' W | 209.9' |

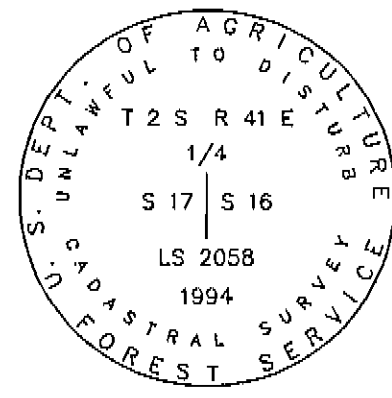


LEGEND

- FOUND ORIGINAL EVIDENCE, SET A 3" DIAM. U.S.F.S. ALUMINUM CAPPED PIPE, 30" LONG, WITH MAGNET, MARKED PER B-L-M MANUAL, SEE TYPICAL CAP FOR STANDARD MARKINGS
- FOUND A 3" DIAM. ALUMINUM CAPPED PIPE MONUMENT, SEE CORNER NOTES
- ▣ FOUND A U.S.G.S. BRASS TABLET CONTROL STATION
- ▲ FOUND A 3" DIAM. ALUMINUM TABLET MONUMENT GPS CONTROL STATION
- ⊙ SET A 3" DIAM. U.S.F.S. ALUMINUM CAPPED PIPE, 30" LONG, WITH MAGNET, MARKED PER B-L-M MANUAL, SEE TYPICAL CAP FOR STANDARD MARKINGS
- [] RECORD BEARING AND/OR DISTANCE, G-L-O, 1898
- (ECW) = NATIONAL FOREST SYSTEM LANDS DESIGNATED AS EAGLE CAP WILDERNESS AREA ARE POSTED TO STANDARD
- NFSL NATIONAL FOREST SYSTEM LANDS



REGISTERED
PROFESSIONAL
LAND SURVEYOR
M & Stoll 10/98
OREGON
JULY 15, 1983
RONALD E. STOLL
2058



TYPICAL FOREST SERVICE CAP
MARKED PER B-L-M MANUAL

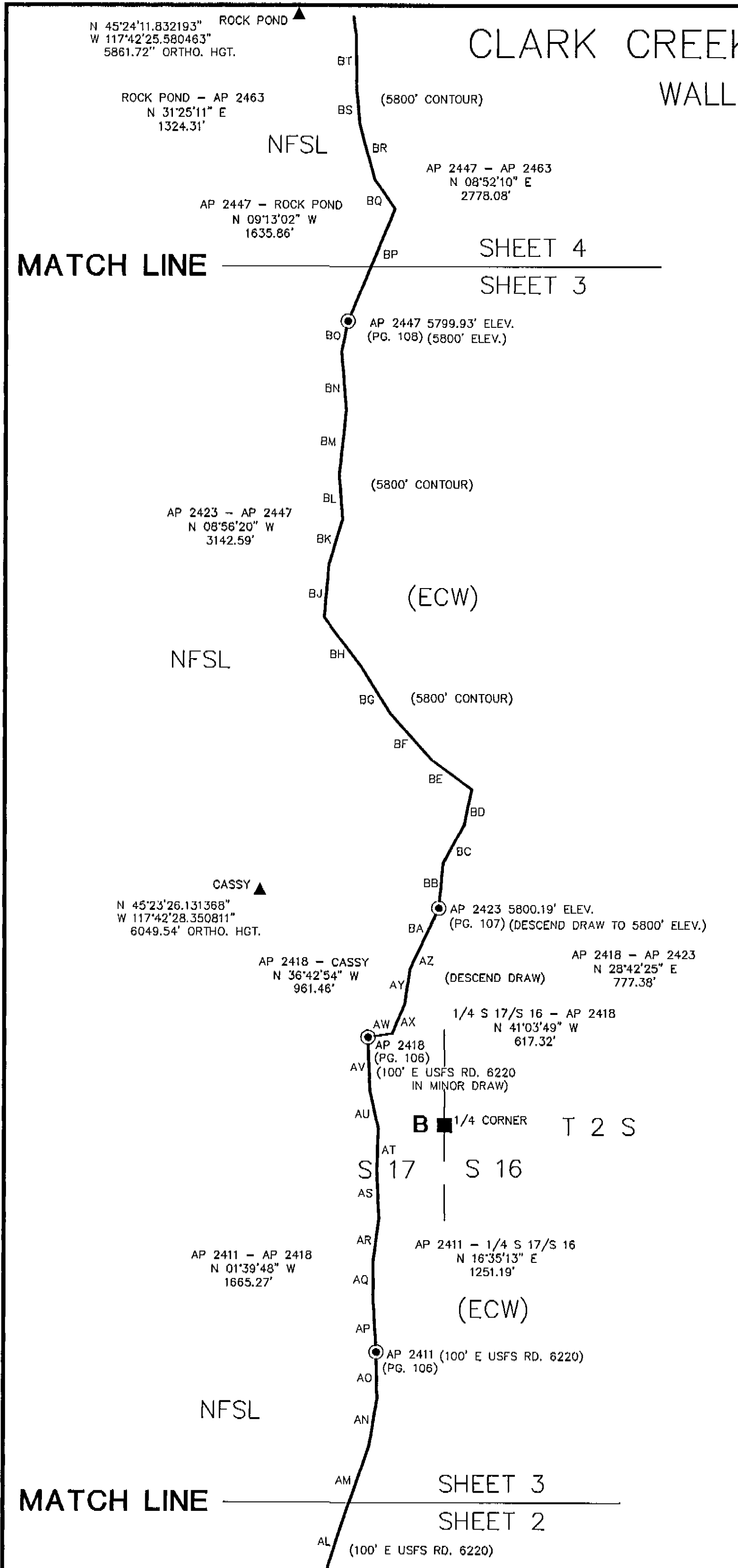
A PORTION OF
T 1 S R 41 E W.M.
AND
T 2 S R 41 E W.M.
UNION COUNTY, OREGON

RECORD OF SURVEY
RES LAND SURVEYS, INC. 8335 N. PLACITA DADIVOSO
TUCSON, ARIZONA 85704

JOB NO. 1236-OR
CONTRACT NO. 53-04M3-2-0120
SHEET 2 OF 8

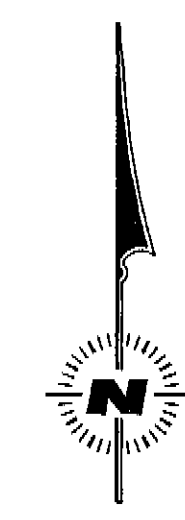
RONALD E. STOLL, R.L.S.

CLARK CREEK/EAGLE CAP WILDERNESS SURVEY WALLOWA-WHITMAN NATIONAL FOREST



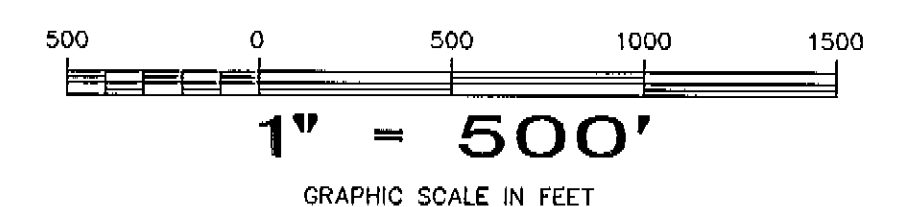
LINE TABLE

| LINE | DIRECTION | DISTANCE |
|------|------------|----------|
| AL | N 17°36' E | 242.7' |
| AM | N 19°16' E | 426.9' |
| AN | N 09°19' E | 255.3' |
| AO | N 01°16' W | 245.2' |
| AP | N 03°35' W | 264.9' |
| AQ | N 00°22' W | 209.9' |
| AR | N 07°27' E | 229.1' |
| AS | N 02°26' W | 265.9' |
| AT | N 02°00' E | 212.4' |
| AU | N 13°02' W | 198.2' |
| AV | N 02°16' W | 292.4' |
| AW | N 81°24' E | 129.7' |
| AX | N 23°03' E | 168.5' |
| AY | N 08°21' E | 184.4' |
| AZ | N 24°40' E | 139.6' |
| BA | N 25°25' E | 219.3' |
| BB | N 05°17' E | 243.1' |
| BC | N 29°05' E | 227.9' |
| BD | N 12°03' E | 191.1' |
| BE | N 53°32' W | 261.8' |
| BF | N 42°01' W | 337.1' |
| BG | N 32°18' W | 300.8' |
| BH | N 37°21' W | 310.1' |
| BJ | N 05°07' E | 281.1' |
| BK | N 16°40' E | 252.0' |
| BL | N 04°30' W | 235.2' |
| BM | N 06°08' E | 342.9' |
| BN | N 04°40' W | 313.9' |
| BO | N 11°52' E | 163.4' |
| BP | N 22°41' E | 643.0' |
| BQ | N 34°39' W | 188.3' |
| BR | N 15°22' W | 296.7' |
| BS | N 05°25' W | 190.0' |
| BT | N 00°34' W | 285.7' |

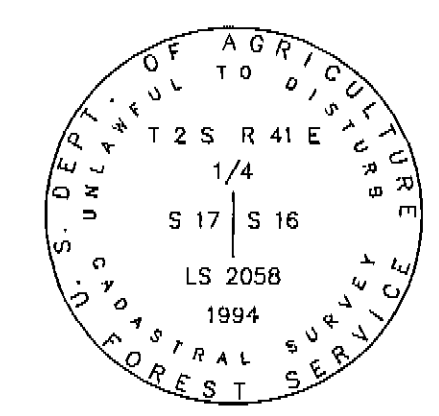


LEGEND

- FOUND ORIGINAL EVIDENCE, SET A 3" DIAM. U.S.F.S. ALUMINUM CAPPED PIPE, 30" LONG, WITH MAGNET, MARKED PER B-L-M MANUAL, SEE TYPICAL CAP FOR STANDARD MARKINGS
- FOUND A 3" DIAM. ALUMINUM CAPPED PIPE MONUMENT, SEE CORNER NOTES
- ▣ FOUND A U.S.G.S. BRASS TABLET CONTROL STATION
- ▲ FOUND A 3" DIAM. ALUMINUM TABLET MONUMENT GPS CONTROL STATION
- ⊙ SET A 3" DIAM. U.S.F.S. ALUMINUM CAPPED PIPE, 30" LONG, WITH MAGNET, MARKED PER B-L-M MANUAL, SEE TYPICAL CAP FOR STANDARD MARKINGS
- [] RECORD BEARING AND/OR DISTANCE, G-L-O, 1898
- (ECW) = NATIONAL FOREST SYSTEM LANDS DESIGNATED AS EAGLE CAP WILDERNESS AREA ARE POSTED TO STANDARD
- NFSL NATIONAL FOREST SYSTEM LANDS



REGISTERED
PROFESSIONAL
LAND SURVEYOR
Ronald E. Stoll 10198
OREGON
JULY 15, 1983
RONALD E. STOLL
2058



RONALD E. STOLL, LS 2058
JOB NO. 1236
CONTRACT NO. 53-04M3-2-0120
SHEET 3 OF 8

A PORTION OF
T 1 S R 41 E W.M.
AND
T 2 S R 41 E W.M.
UNION COUNTY, OREGON

RECORD OF SURVEY

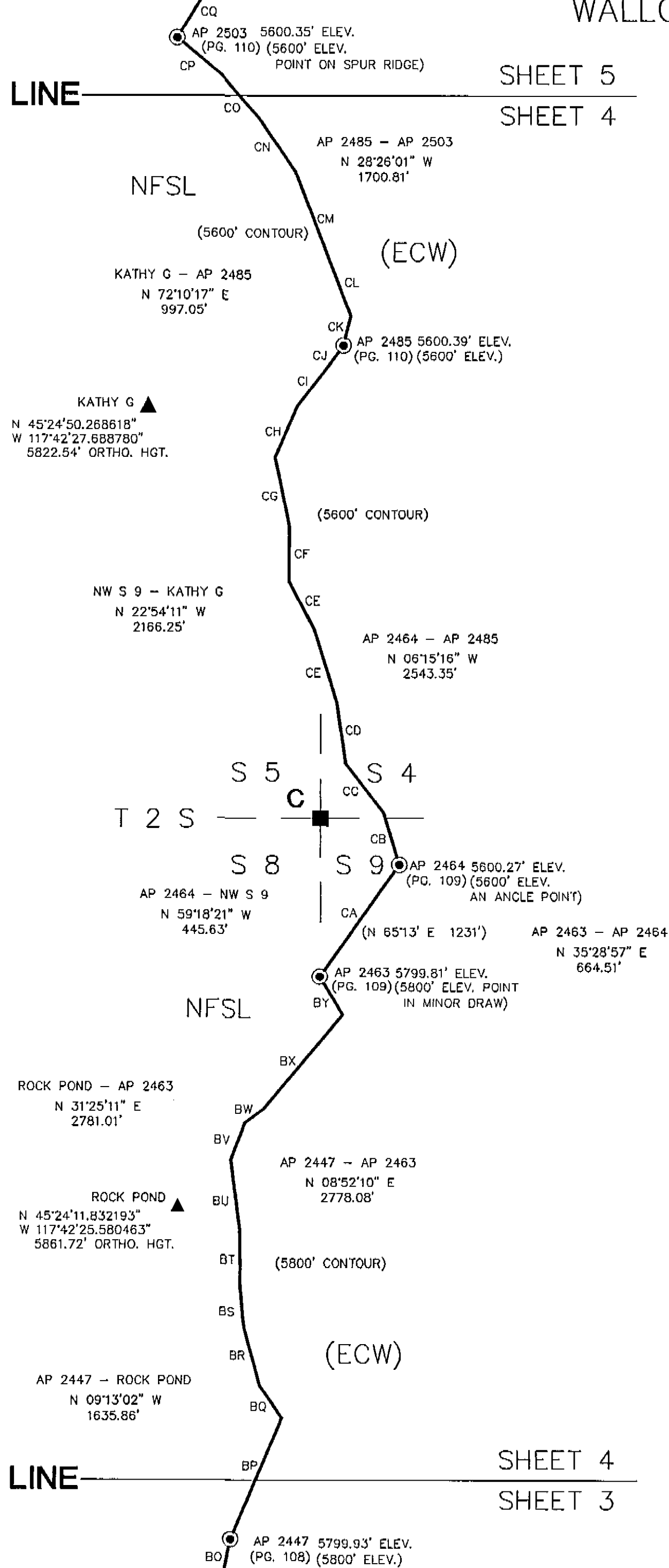
RES LAND SURVEYS, INC. 8335 N. PLACITA DADIVOSO
TUCSON, ARIZONA 85704

CLARK CREEK/EAGLE CAP WILDERNESS SURVEY

WALLOWA-WHITMAN NATIONAL FOREST

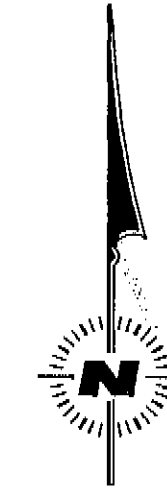
MATCH LINE

SHEET 5
SHEET 4



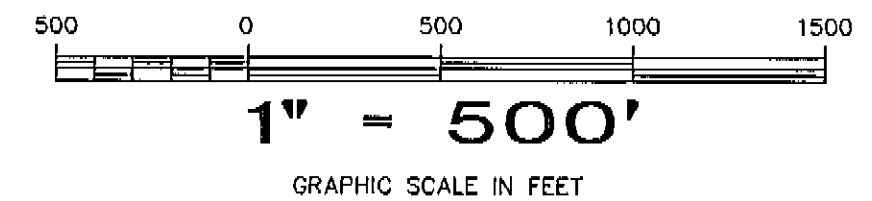
LINE TABLE

| LINE | DIRECTION | DISTANCE |
|------|------------|----------|
| BO | N 11°52' E | 163.4' |
| BP | N 22°41' E | 643.0' |
| BQ | N 34°39' W | 188.3' |
| BR | N 15°22' W | 296.7' |
| BS | N 05°25' W | 190.0' |
| BT | N 00°34' W | 285.7' |
| BU | N 07°22' W | 345.7' |
| BV | N 20°50' E | 192.5' |
| BW | N 53°25' E | 110.3' |
| BX | N 39°59' E | 600.1' |
| BY | N 30°45' W | 217.9' |
| CA | N 35°29' E | 664.5' |
| CB | N 16°51' W | 263.5' |
| CC | N 37°29' W | 303.4' |
| CD | N 08°36' W | 301.5' |
| CE | N 17°12' W | 373.3' |
| CE | N 28°12' W | 260.3' |
| CF | N 00°16' E | 269.1' |
| CG | N 11°47' W | 344.7' |
| CH | N 23°19' E | 270.1' |
| CI | N 37°42' E | 255.3' |
| CJ | N 35°55' E | 116.9' |
| CK | N 13°43' E | 149.4' |
| CL | N 21°06' W | 287.3' |
| CM | N 21°01' W | 462.1' |
| CN | N 34°13' W | 324.0' |
| CO | N 41°08' W | 275.9' |
| CP | N 50°27' W | 275.5' |
| CQ | N 31°40' E | 292.9' |

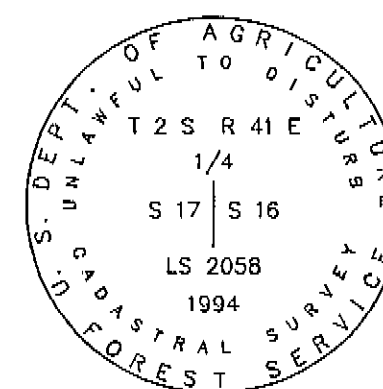


LEGEND

- FOUND ORIGINAL EVIDENCE, SET A 3" DIAM. U.S.F.S. ALUMINUM CAPPED PIPE, 30" LONG, WITH MAGNET, MARKED PER B-L-M MANUAL, SEE TYPICAL CAP FOR STANDARD MARKINGS
- FOUND A 3" DIAM. ALUMINUM CAPPED PIPE MONUMENT, SEE CORNER NOTES
- ▣ FOUND A U.S.G.S. BRASS TABLET CONTROL STATION
- ▲ FOUND A 3" DIAM. ALUMINUM TABLET MONUMENT GPS CONTROL STATION
- ⊙ SET A 3" DIAM. U.S.F.S. ALUMINUM CAPPED PIPE, 30" LONG, WITH MAGNET, MARKED PER B-L-M MANUAL, SEE TYPICAL CAP FOR STANDARD MARKINGS
- [] RECORD BEARING AND/OR DISTANCE, G-L-O, 1898
- (ECW) = NATIONAL FOREST SYSTEM LANDS DESIGNATED AS EAGLE CAP WILDERNESS AREA ARE POSTED TO STANDARD
- NFSL NATIONAL FOREST SYSTEM LANDS



REGISTERED
PROFESSIONAL
LAND SURVEYOR
Ronald E. Stoll
OREGON
JULY 15, 1983
RONALD E. STOLL
2058



RONALD E. STOLL, LS 2058
JOB NO. 1236
CONTRACT NO. 53-04M3-2-0120
SHEET 4 OF 8

A PORTION OF
T 1 S R 41 E W.M.
AND
T 2 S R 41 E W.M.
UNION COUNTY, OREGON

RECORD OF SURVEY

RES LAND SURVEYS, INC. 8335 N. PLACITA DADIVOSO
TUCSON, ARIZONA 85704

CLARK CREEK/EAGLE CAP WILDERNESS SURVEY
WALLOWA-WHITMAN NATIONAL FOREST

MATCH LINE

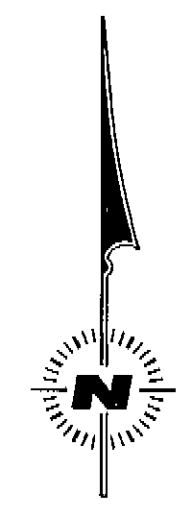
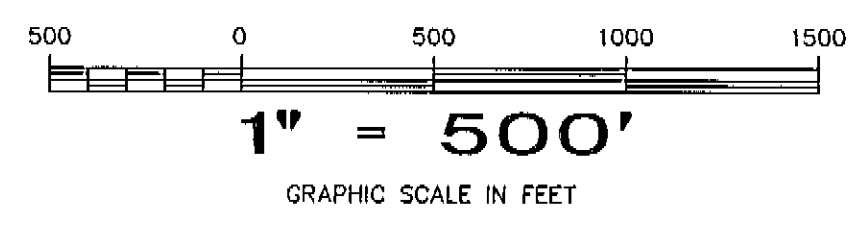
SHEET 6
SHEET 5

SKUNK - MEGHAN
N 82°58'21" E
3217.54'

SKUNK
N 45°26'05.221079"
W 117°44'18.501364"
5475.34' ORTHO. HGT.

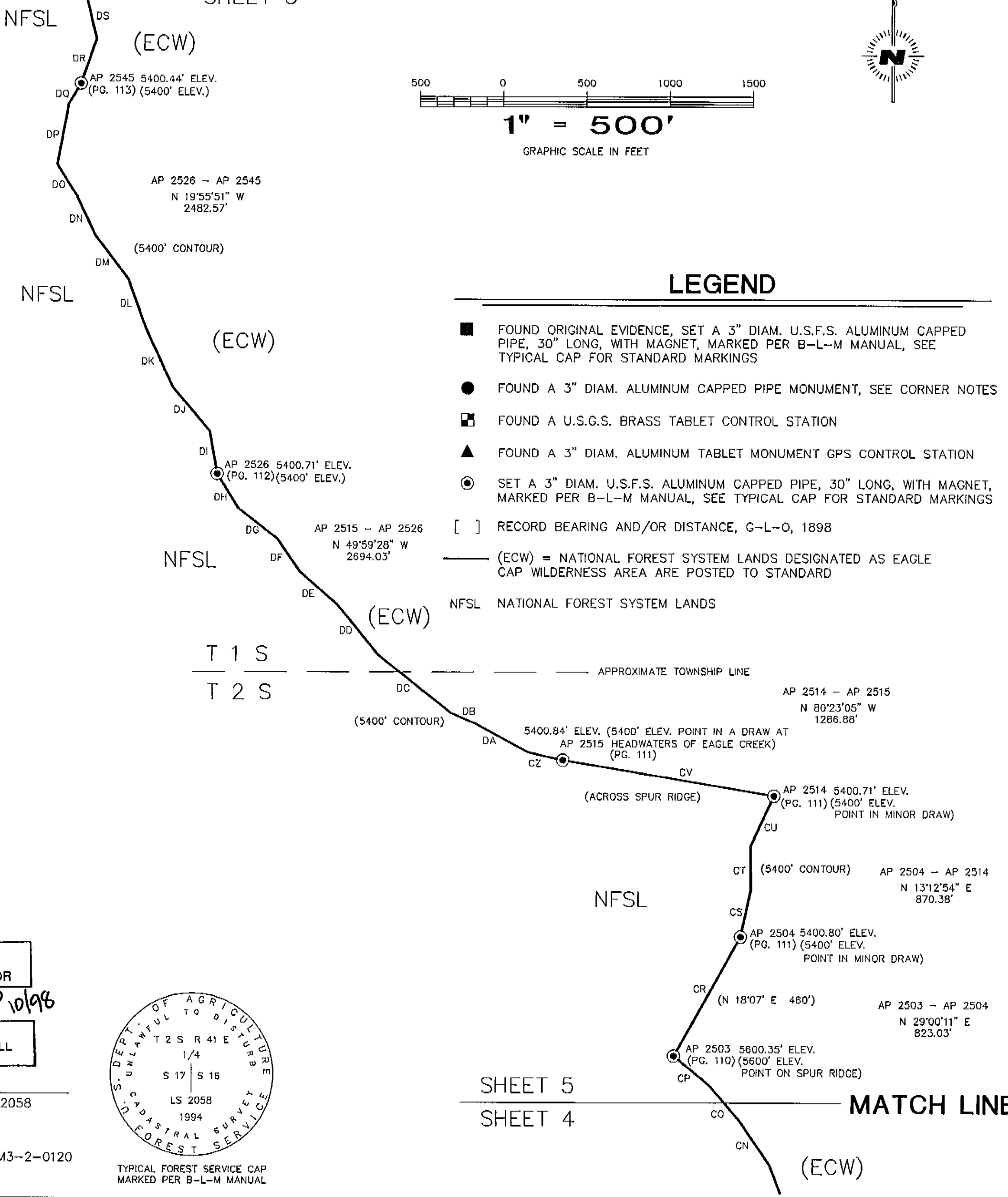
MEGHAN
N 45°26'09.118570"
W 117°43'33.727992"
5554.34' ORTHO. HGT.

AP 2545 - MEGHAN
N 74°58'37" W
1313.89'



LINE TABLE

| LINE | DIRECTION | DISTANCE |
|------|------------------|----------|
| CN | N 34°13' W | 324.0' |
| CO | N 41°08' W | 275.9' |
| CP | N 50°27' W | 275.5' |
| CR | N 29°00' E | 823.0' |
| CS | N 12°17' E | 287.6' |
| CT | N 00°14' W | 268.3' |
| CU | N 24°59' E | 328.8' |
| CV | N 80°23' W | 1286.9' |
| CW | REMOVED IN FIELD | |
| CX | REMOVED IN FIELD | |
| CY | REMOVED IN FIELD | |
| CZ | N 77°43' W | 210.1' |
| DA | N 61°36' W | 374.2' |
| DB | N 66°33' W | 152.3' |
| DC | N 51°33' W | 562.3' |
| DD | N 39°03' W | 386.2' |
| DE | N 48°44' W | 302.9' |
| DF | N 35°00' W | 237.1' |
| DG | N 52°02' W | 297.5' |
| DH | N 31°23' W | 244.3' |
| DI | N 10°05' W | 262.2' |
| DJ | N 40°34' W | 344.4' |
| DK | N 24°36' W | 386.4' |
| DL | N 19°57' W | 314.2' |
| DM | N 37°12' W | 333.4' |
| DN | N 24°59' W | 281.7' |
| DO | N 32°00' W | 224.0' |
| DP | N 10°44' E | 369.1' |
| DQ | N 30°22' E | 145.7' |
| DR | N 19°17' E | 284.6' |
| DS | N 13°39' W | 238.3' |
| DT | N 20°36' W | 249.1' |
| DU | N 02°17' E | 274.2' |
| DV | N 19°15' E | 270.8' |
| DW | N 12°51' E | 309.9' |



LEGEND

- FOUND ORIGINAL EVIDENCE, SET A 3" DIAM. U.S.F.S. ALUMINUM CAPPED PIPE, 30" LONG, WITH MAGNET, MARKED PER B-L-M MANUAL, SEE TYPICAL CAP FOR STANDARD MARKINGS
- FOUND A 3" DIAM. ALUMINUM CAPPED PIPE MONUMENT, SEE CORNER NOTES
- ▣ FOUND A U.S.G.S. BRASS TABLET CONTROL STATION
- ▲ FOUND A 3" DIAM. ALUMINUM TABLET MONUMENT GPS CONTROL STATION
- ⊙ SET A 3" DIAM. U.S.F.S. ALUMINUM CAPPED PIPE, 30" LONG, WITH MAGNET, MARKED PER B-L-M MANUAL, SEE TYPICAL CAP FOR STANDARD MARKINGS
- [] RECORD BEARING AND/OR DISTANCE, G-L-O, 1898
- (ECW) = NATIONAL FOREST SYSTEM LANDS DESIGNATED AS EAGLE CAP WILDERNESS AREA ARE POSTED TO STANDARD
- NFSL NATIONAL FOREST SYSTEM LANDS

A PORTION OF
T 1 S R 41 E W.M.
AND
T 2 S R 41 E W.M.
UNION COUNTY, OREGON

RECORD OF SURVEY

RES LAND SURVEYS, INC. 8335 N. PLACITA DADIVOSO
TUCSON, ARIZONA 85704

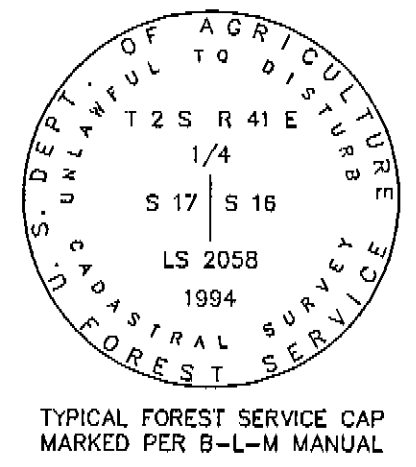
REGISTERED
PROFESSIONAL
LAND SURVEYOR

Ronald E. Stoll 10/98

OREGON
JULY 16, 1993
RONALD E. STOLL
2058

RONALD E. STOLL, LS 2058

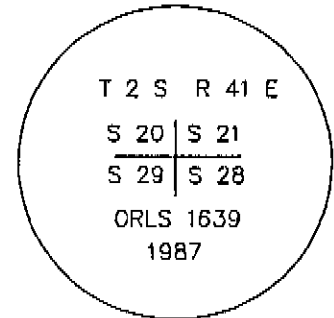
JOB NO. 1236
CONTRACT NO. 53-04M3-2-0120
SHEET 5 OF 8



SHEET 5
SHEET 4

MATCH LINE

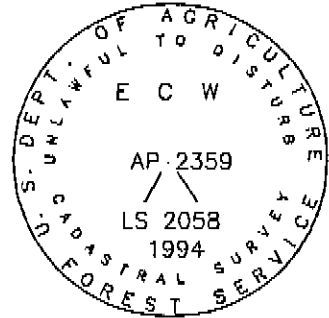
A: CORNER TO SECTIONS 21, 20, 28 & 29
 FOUND A 3" DIAM. ALUMINUM CAPPED PIPE IN SMALL MOUND
 OF STONE, CAP MARKED:



FROM WHICH: G-L-O ACCESSORIES
 A FIR(DED), 12" IN DIAM. BEARS N 39°03' E, 11.91', CLOSED BLAZE
 A FIR(DED), 9" IN DIAM. BEARS N 86°27' E, 6.60', CLOSED BLAZE

FROM WHICH: ORLS 1639 ACCESSORIES
 A FIR, 12" IN DIAM. BEARS N 14°53' E, 69.13', SCRIBED
 T2SR41ES21 BT
 A FIR, 7" IN DIAM. BEARS S 18°57' E, 45.73', SCRIBED
 T2SR41ES28 BT
 A FIR, 8" IN DIAM. BEARS S 70°43' W, 84.70', SCRIBED
 T2SR41ES29 BT
 A FIR, 9" IN DIAM. BEARS N 78°06' W, 61.94', SCRIBED
 T2SR41ES20 BT

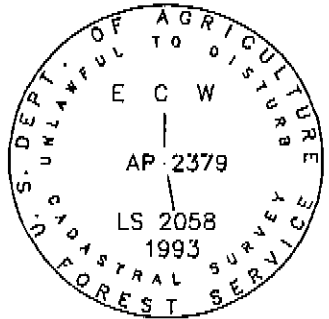
AP 2359
 SET MONUMENT 12" IN GROUND WITH MOUND OF STONE
 TO CAP, CAP MARKED:



FROM WHICH: LS 2058 ACCESSORIES
 A FIR, 9" IN DIAM. BEARS N 34°30' E, 41.53', SCRIBED
 ECWAP2359 BT
 A FIR, 7" IN DIAM. BEARS S 42°32' E, 39.60', SCRIBED
 ECWAP2359 BT

AP 2364
 SEE SHEET B

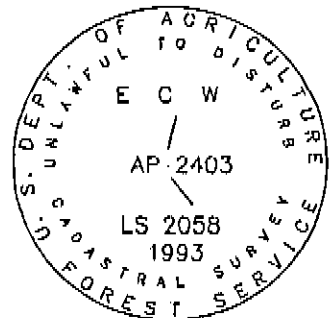
AP 2379
 SET MONUMENT 20" IN GROUND WITH MOUND OF STONE
 TO CAP, CAP MARKED:



FROM WHICH: LS 2058 ACCESSORIES
 A FIR, 19" IN DIAM. BEARS N 82°16' W, 25.25', SCRIBED
 ECWAP2379 BT
 A FIR, 12" IN DIAM. BEARS N 08°26' E, 59.51', SCRIBED
 ECWAP2379 BT

POINT PROMINENCE=AP 2384
 SEE SHEET B

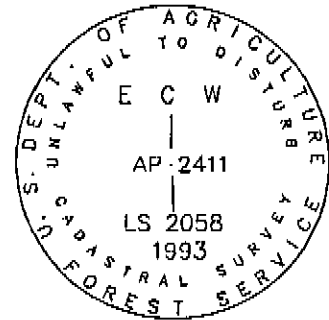
AP 2403
 SET MONUMENT 20" IN GROUND WITH MOUND OF STONE
 TO CAP, CAP MARKED:



FROM WHICH: LS 2058 ACCESSORIES
 A FIR, 7" IN DIAM. BEARS S 54°48' E, 5.20', SCRIBED
 AP2403 BT
 A FIR, 7" IN DIAM. BEARS S 47°14' W, 12.65', SCRIBED
 AP2403 BT

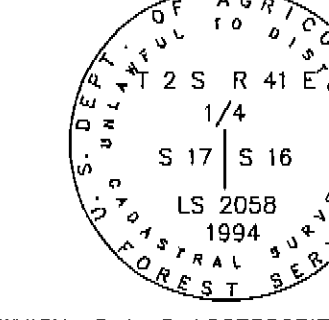
CLARK CREEK/EAGLE CAP WILDERNESS SURVEY WALLOWA-WHITMAN NATIONAL FOREST

AP 2411
 SET MONUMENT 30" IN GROUND WITH MOUND OF STONE
 TO CAP, CAP MARKED:



FROM WHICH: LS 2058 ACCESSORIES
 A FIR, 11" IN DIAM. BEARS N 00°13' W, 17.37', SCRIBED
 ECWAP2411 BT
 A FIR, 9" IN DIAM. BEARS N 86°49' E, 28.05', SCRIBED
 ECWAP2411 BT

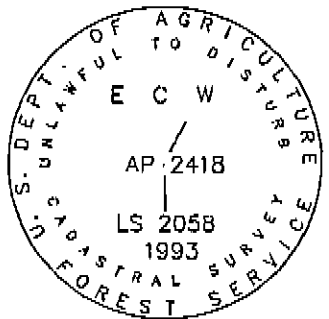
B: 1/4 CORNER TO SECTIONS 16 & 17
 FOUND A 12"x10"x6" [14"x11"x8"] MARKED STONE, SET A
 MONUMENT 18" IN GROUND WITH MOUND OF STONE TO CAP,
 CAP MARKED:



FROM WHICH: G-L-O ACCESSORIES
 A TAMARACK, 42"[24]" IN DIAM. BEARS S 11°16' E, [S13' E],
 27.23' [26.4"], PARTIAL SCRIBING VISIBLE 1/4S16 BT

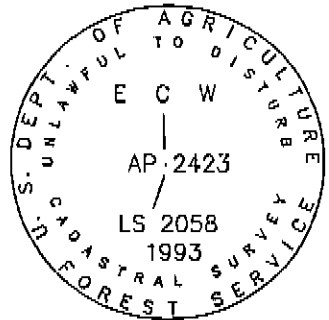
FROM WHICH: LS 2058 ACCESSORIES
 A FIR, 11" IN DIAM. BEARS N 77°17' E, 22.40', SCRIBED
 1/4S16 BT
 A FIR, 9" IN DIAM. BEARS S 81°00' W, 9.25', SCRIBED
 1/4S17 BT
 A FIR, 10" IN DIAM. BEARS N 02°21' W, 11.3', SCRIBED
 BT

AP 2418
 SET MONUMENT 30" IN GROUND WITH MOUND OF STONE
 TO CAP, CAP MARKED:



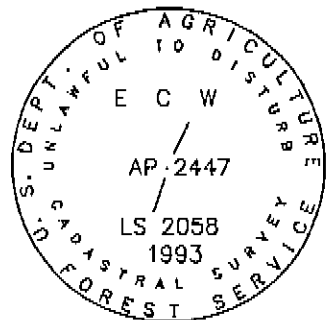
FROM WHICH: LS 2058 ACCESSORIES
 A FIR, 12" IN DIAM. BEARS N 59°54' W, 17.79', SCRIBED
 ECWAP2418 BT
 A FIR, 9" IN DIAM. BEARS S 34°59' W, 21.82', SCRIBED
 ECWAP2418 BT

AP 2423
 SET MONUMENT 30" IN GROUND WITH MOUND OF STONE
 TO CAP, CAP MARKED:



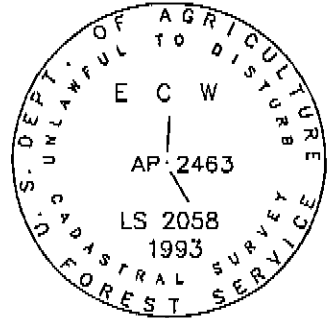
FROM WHICH: LS 2058 ACCESSORIES
 A FIR, 8" IN DIAM. BEARS S 28°30' W, 43.6', SCRIBED
 AP2423ECW BT
 A FIR, 27" IN DIAM. BEARS S 58°15' E, 11.8', SCRIBED
 AP2423ECW BT

AP 2447
 SET MONUMENT 12" IN GROUND WITH MOUND OF STONE
 TO CAP, CAP MARKED:



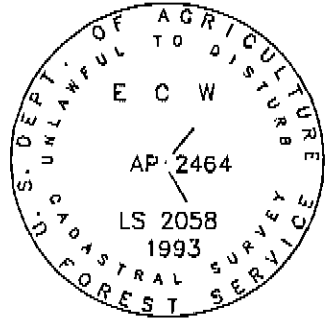
FROM WHICH: LS 2058 ACCESSORIES
 A FIR, 6" IN DIAM. BEARS N 29°28' E, 49.5', SCRIBED
 ECWAP2447 BT
 A FIR, 9" IN DIAM. BEARS S 86°50' E, 65.5', SCRIBED
 ECWAP2447 BT

AP 2463
 SET MONUMENT 16" IN GROUND WITH MOUND OF STONE
 TO CAP, CAP MARKED:



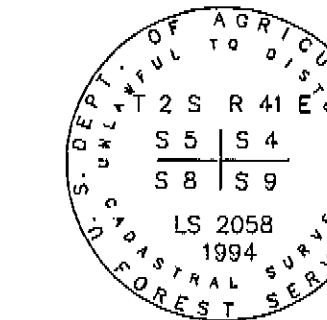
FROM WHICH: LS 2058 ACCESSORIES
 A FIR, 7" IN DIAM. BEARS N 19°05' W, 13.53', SCRIBED
 ECWAP2463 BT
 A FIR, 8" IN DIAM. BEARS S 46°54' W, 23.52', SCRIBED
 ECWAP2463 BT

AP 2464
 SET MONUMENT 16" IN GROUND WITH MOUND OF STONE
 TO CAP, CAP MARKED:



FROM WHICH: LS 2058 ACCESSORIES
 A FIR, 4" IN DIAM. BEARS N 56°44' E, 21.39', SCRIBED
 ECWAP2464 BT
 A FIR, 5" IN DIAM. BEARS N 41°50' W, 8.57', SCRIBED
 ECWAP2464 BT

C: CORNER TO SECTIONS 4, 5, 8 & 9
 FOUND A 12"x15"x10" [16"x10"x8"] MARKED STONE, SET A
 3/4" DRILL HOLE IN TOP OF STONE WITH A MONUMENT 30"
 ABOVE GROUND WITH MOUND OF STONE TO CAP,
 CAP MARKED:



FROM WHICH: G-L-O ACCESSORIES
 A SNAG[TAMARACK], 42"[36]" IN DIAM. BEARS S 71°50' W[S 71°30' W],
 133.6' [138.6"], PARTIAL SCRIBING VISIBLE S R 41 S 8 BT

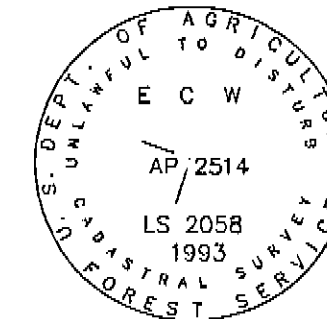
FROM WHICH: LS 2058 ACCESSORIES
 A 1/2" DIAM. DRILL HOLE IN A 40"x27"x40" ROCK BEARS N 35°34' W, 48.18'
 A 1/2" DIAM. DRILL HOLE IN A 54"x51"x29" ROCK BEARS N 36°03' E, 47.71'
 A 1/2" DIAM. DRILL HOLE IN A 46"x32"x12" ROCK BEARS S 57°15' E, 51.43'
 A 1/2" DIAM. DRILL HOLE IN A 48"x36"x48" ROCK BEARS S 21°50' E, 44.87'

NOTE: EACH DRILL HOLE IS MARKED WITH A CONCRETE NAIL AND LS TAG

LEGEND

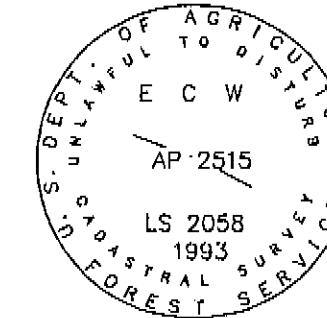
- [] RECORD BEARING AND/OR DISTANCE, G-L-O, 1898
- () RECORD BEARING AND/OR DISTANCE, LS 1848, 1886
- MONUMENT A U.S.F.S. 3" DIAM. ALUMINUM CAPPED PIPE, 30" LONG

AP 2514
 SET MONUMENT 20" IN GROUND WITH MOUND OF STONE
 TO CAP, CAP MARKED:



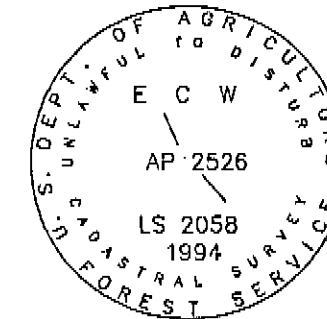
FROM WHICH: LS 2058 ACCESSORIES
 A FIR, 7" IN DIAM. BEARS S 85°16' E, 8.35', SCRIBED
 ECWAP2514 BT
 A FIR, 6" IN DIAM. BEARS N 16°27' E, 23.28', SCRIBED
 ECWAP2514 BT

AP 2515
 SET MONUMENT 20" IN GROUND WITH MOUND OF STONE
 TO CAP, CAP MARKED:



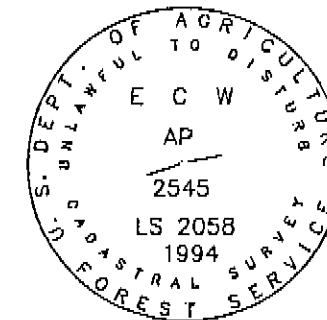
FROM WHICH: LS 2058 ACCESSORIES
 A FIR, 6" IN DIAM. BEARS N 24°21' E, 9.07', SCRIBED
 ECWAP2515 BT
 A FIR, 8" IN DIAM. BEARS S 79°54' W, 24.01', SCRIBED
 ECWAP2515 BT

AP 2526
 SET MONUMENT 20" IN GROUND WITH MOUND OF STONE
 TO CAP, CAP MARKED:



FROM WHICH: LS 2058 ACCESSORIES
 A FIR, 13" IN DIAM. BEARS N 23°06' E, 46.68', SCRIBED
 ECWAP2526 BT
 A FIR, 8" IN DIAM. BEARS S 49°44' W, 32.26', SCRIBED
 ECWAP2526 BT

AP 2545
 SET MONUMENT 20" IN GROUND WITH MOUND OF STONE
 TO CAP, CAP MARKED:



FROM WHICH: LS 2058 ACCESSORIES
 A FIR, 8" IN DIAM. BEARS N 80°13' W, 9.37', SCRIBED
 ECWAP2545 BT
 A FIR, 9" IN DIAM. BEARS N 09°34' E, 21.65', SCRIBED
 ECWAP2545 BT

REGISTERED
 PROFESSIONAL
 LAND SURVEYOR
Ronald E. Stoll 10/198
 OREGON
 JULY 15, 1983
 RONALD E. STOLL
 2058

RONALD E. STOLL, LS 2058

JOB NO. 1236
 CONTRACT NO. 53-04M3-2-0120
 SHEET 7 OF 8

A PORTION OF
 T 1 S R 41 E W.M.
 AND
 T 2 S R 41 E W.M.
 UNION COUNTY, OREGON

RECORD OF SURVEY

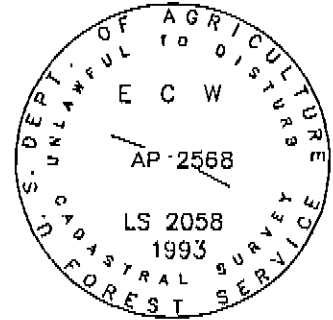
RES LAND SURVEYS, INC.

8335 N. PLACITA DADIVOSO
 TUCSON, ARIZONA 85704

CLARK CREEK/EAGLE CAP WILDERNESS SURVEY WALLOWA-WHITMAN NATIONAL FOREST

AP 2568

SET MONUMENT 26" IN GROUND WITH MOUND OF STONE TO CAP, CAP MARKED:



FROM WHICH: LS 2058 ACCESSORIES

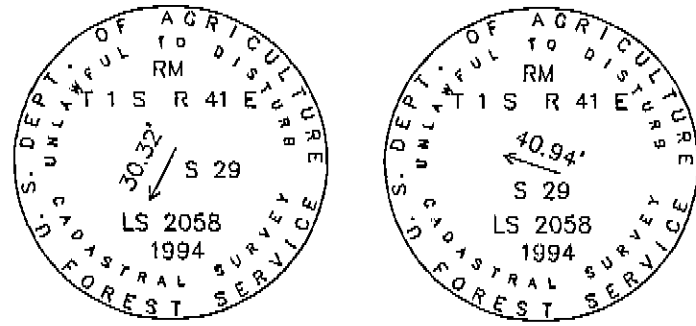
A FIR, 11" IN DIAM. BEARS N 20°40' W, 13.90', SCRIBED ECWAP2568 BT
A FIR, 7" IN DIAM. BEARS S 75°29' E, 10.58', SCRIBED ECWAP2568 BT

E: LINE TREE TO SECTIONS 29 & 30

FOUND A 9" [24"] ROTTED FIR WITH TWO NOTCHES VISIBLE SET A 60D SPIKE IN CENTER OF STUMP

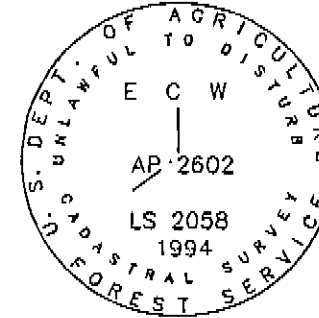
FROM WHICH: LS 2058 ACCESSORIES

A MONUMENT SET 24" IN THE GROUND WITH SMALL MOUND OF STONES, BEARS N 22°16' E, 30.32'
A MONUMENT SET 24" IN THE GROUND WITH SMALL MOUND OF STONES, BEARS S 70°12' E, 40.94'



AP 2602

SET MONUMENT ON SECTION LINE 10" IN GROUND WITH MOUND OF STONE TO CAP, CAP MARKED:

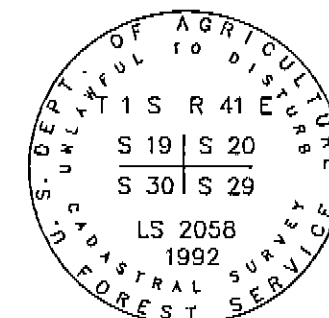


FROM WHICH: LS 2058 ACCESSORIES

A FIR, 15" IN DIAM. BEARS S 38°02' W, 32.15', SCRIBED ECWAP2602 BT
A FIR, 10" IN DIAM. BEARS S 20°26' E, 28.86', SCRIBED ECWAP2602 BT

H: CORNER TO SECTIONS 19, 20, 29 & 30

FOUND A 14"x15"x8" [15"x14"x7"] MARKED STONE, SET A MONUMENT 30" IN THE GROUND WITH MOUND OF STONE TO CAP, CAP MARKED:

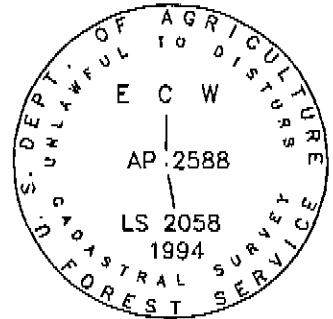


FROM WHICH: G-L-O ACCESSORIES

A FIR, 38"[24"] IN DIAM. BEARS N 11°24' E, [N14° E], 59.82' [60.7'], CLOSED BLAZE
A PINE, 10"[6"] IN DIAM. BEARS N 06°55' W, [N05° W], 39.15' [38.9'], PARTIAL OPEN BLAZE
A FIR, 28"[14"] IN DIAM. BEARS S 51°27' W, [S52° W], 7.34' [7.3'], CLOSED BLAZE
A FIR, 27"[24"] IN DIAM. BEARS S 52°12' E, [S52° E], 14.67' [14.5'], CLOSED BLAZE

AP 2588

SET MONUMENT ON SECTION LINE 20" IN GROUND WITH MOUND OF STONE TO CAP, CAP MARKED:

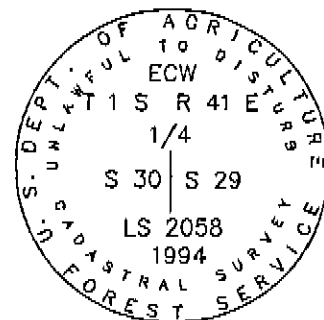


FROM WHICH: LS 2058 ACCESSORIES

A FIR, 5" IN DIAM. BEARS N 73°14' W, 8.94', SCRIBED ECWAP2588 BT
A FIR, 6" IN DIAM. BEARS N 36°24' E, 26.86', SCRIBED ECWAP2588 BT

F: 1/4 CORNER TO SECTIONS 29 & 30

NO EVIDENCE OF THE ORIGINAL MONUMENT FOUND, POSITION OF CORNER REESTABLISHED FROM A FOUND ORIGINAL BEARING TREE, SET MONUMENT 20" IN GROUND WITH MOUND OF STONE TO CAP, CAP MARKED:

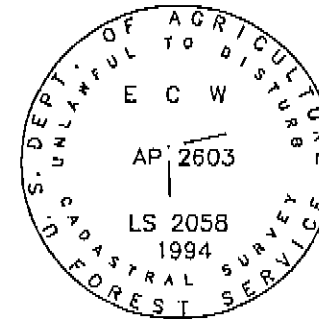


FROM WHICH: G-L-O ACCESSORIES

A FIR, 17"[8"] IN DIAM. BEARS S 41°01' W, [S37° W], 9.76' [9.2'], WITH CLOSED BLAZE

AP 2603

SET MONUMENT ON SECTION LINE 10" IN GROUND WITH MOUND OF STONE TO CAP, CAP MARKED:

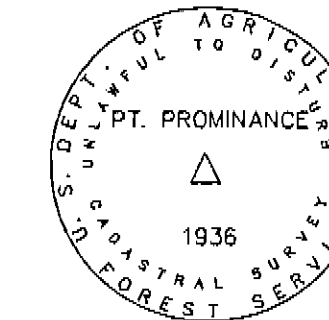


FROM WHICH: LS 2058 ACCESSORIES

A FIR, 8" IN DIAM. BEARS N 83°10' E, 8.74', SCRIBED ECWAP2603 BT
A FIR, 9" IN DIAM. BEARS S 31°50' E, 19.05', SCRIBED ECWAP2603 BT

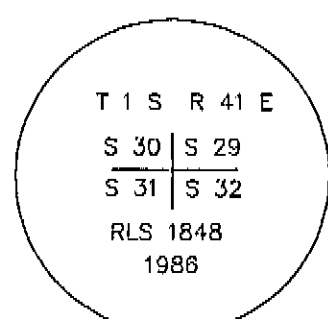
POINT PROMINANCE = AP 2384

FOUND A U.S.F.S. 3" DIAM. BRASS CAP IN LEDGE ROCK



D: CORNER TO SECTIONS 29, 30, 31 & 32

FOUND A 3" DIAM. ALUMINUM CAPPED PIPE IN SMALL MOUND OF STONE, CAP MARKED:



FROM WHICH: G-L-O ACCESSORIES

A ROTTED STUMP BEARS N 64°06' E, 57.11'

FROM WHICH: RLS 1848 ACCESSORIES

A FIR, 4" IN DIAM. (DEAD) BEARS N 65°50' E, 31.92'

A FIR, 8" IN DIAM. BEARS S 78°59' E, 60.79', SCRIBED T1SR41ES32 BT
A FIR, 7" IN DIAM. BEARS S 28°11' W, 53.18', SCRIBED T1SR41ES31 BT
A FIR, 7" IN DIAM. BEARS N 57°25' W, 18.18', SCRIBED T1SR41ES30 BT

FROM WHICH: LS 2058 ACCESSORIES

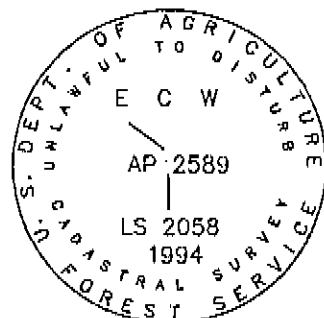
A FIR, 6" IN DIAM. BEARS N 68°25' E, 34.53', SCRIBED T1SR41ES29 BT

FROM WHICH: LS 2058 ACCESSORIES

A FIR, 25" IN DIAM. BEARS S 88°10' W, 19.90', SCRIBED 1/4X BT
A FIR, 11" IN DIAM. BEARS N 11°11' W, 43.62', SCRIBED 1/4S30 BT
A FIR, 7" IN DIAM. BEARS N 87°25' E, 45.82', SCRIBED 1/4S29 BT

AP 2589

SET MONUMENT ON SECTION LINE 18" IN GROUND WITH MOUND OF STONE TO CAP, CAP MARKED:



FROM WHICH: LS 2058 ACCESSORIES

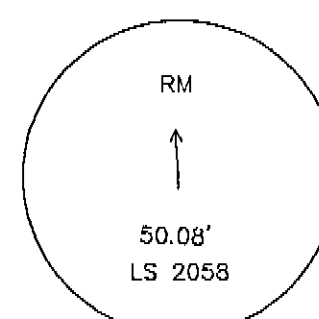
A FIR, 16" IN DIAM. BEARS S 02°07' W, 23.99', SCRIBED ECWAP2589 BT
A FIR, 10" IN DIAM. BEARS N 89°41' E, 9.60', SCRIBED ECWAP2589 BT

G: LINE TREE TO SECTIONS 29 & 30

FOUND A 28" [30"] FIR SNAG WITH 2 NOTCHES VISIBLE ON NORTH & SOUTH SIDES OF TREE

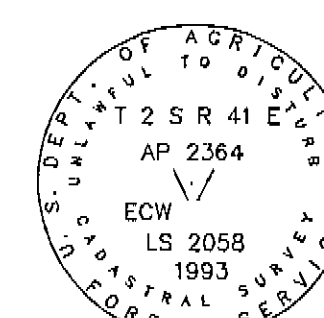
FROM WHICH: LS 2058 ACCESSORIES

SET A 1 1/2" ALUMINUM CAP ON A 1/2" DIAM. REBAR, BEARS N 37°24' E, 50.08'



AP 2364

DRILLED A 5/8" DIAM. HOLE IN LEDGE ROCK AND SET A 3" DIAM. ALUMINUM TABLET, TABLET MARKED:



FROM WHICH: LS 2058 ACCESSORIES

A 1/2" DIAM. DRILL HOLE WITH PK NAIL AND LS TAG IN ROCK FACE BEARS N 69°03' E, 73.19'
A 1/2" DIAM. DRILL HOLE WITH PK NAIL AND LS TAG IN ROCK FACE BEARS S 60°58' E, 44.35'

LEGEND

[] RECORD BEARING AND/OR DISTANCE, G-L-O, 1898

() RECORD BEARING AND/OR DISTANCE, LS 1848, 1986

MONUMENT A U.S.F.S. 3" DIAM. ALUMINUM CAPPED PIPE, 30" LONG

REGISTERED PROFESSIONAL LAND SURVEYOR

RM & Stoll 10/98

OREGON JULY 18, 1963 RONALD E. STOLL 2058

RONALD E. STOLL, LS 2058

JOB NO. 1236

CONTRACT NO. 53-04M3-2-0120

SHEET 8 OF 8

A PORTION OF
T 1 S R 41 E W.M.
AND
T 2 S R 41 E W.M.
UNION COUNTY, OREGON

RECORD OF SURVEY
RES LAND SURVEYS, INC. 8335 N. PLACITA DADIVOSO TUCSON, ARIZONA 85704