

# BASIS OF BEARING








Forward bearing as published by the U.S.C. and G.S. from  $\Delta$  COLLEGE to  $\Delta$  VALLEY Dated 1946.

**SCALE: 1" = 30'**

## REFERENCE MATERIAL

Plat of Grande Ronde Medical Center  
Plat of Grande Ronde Medical Condominium  
Union County Survey Number 038-1994

## LEGEND

-  Found 1/2" iron pin set by the plat of Grande Ronde Medical Center
-  Found 5/8" rebar with Yellow Plastic Cap marked "BGB SURVEY MARKER" as per 038-1994
-  Set 5/8" rebar with Yellow Plastic Cap marked "BGB SURVEY MARKER"
-  Found 2 1/2" brass cap monument initial point of Grande Ronde Medical Center
-  Area of encroachment
-  Decorative 6" brick wall
-  Back of Curb

## NARRATIVE

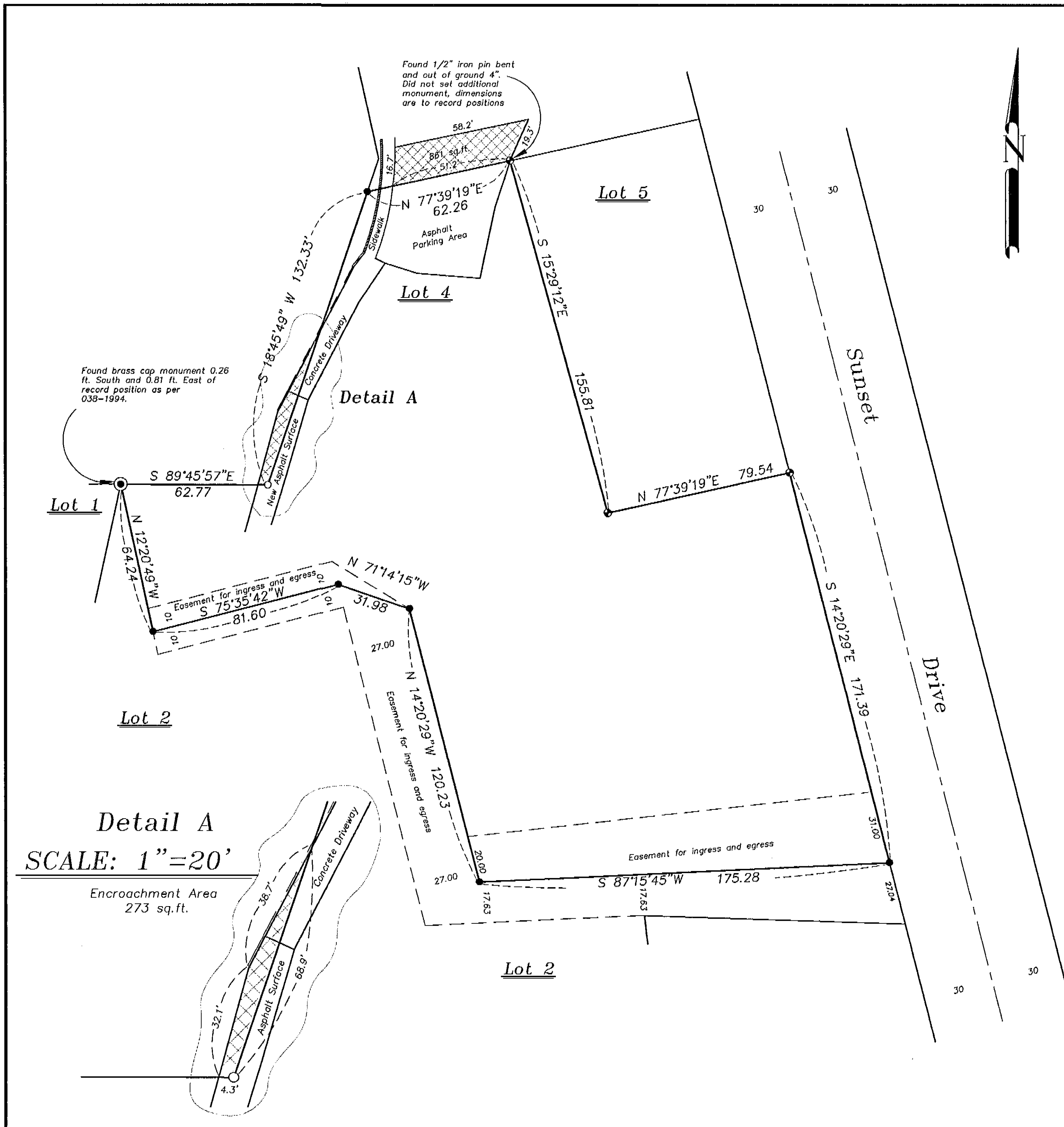
This survey was done at the request of Steve Spencer on behalf of Grande Ronde Hospital. The purpose of this survey was to determine the area of encroachment on the Northwest side of the property. The parking area and access road encroaches as shown. The monument in the access area, a cross in the previously existing concrete sidewalk, was destroyed with the construction of a new asphalt surface. This monument was reestablished from record bearing and distance from the associated monuments to the North and West. I find no other unusual conditions on this survey.

UNION COUNTY SURVEYOR  
Date Received 11/16/98  
Date Filed 12/18/98  
By *Gregory T. Olson*  
File No. 048-1998

REGISTERED PROFESSIONAL LAND SURVEYOR  
*Rick G. Robinson*  
OREGON JULY 17, 1988  
RICK G. ROBINSON 2218  
Renewal Date: Dec. 31, 2000

**BAGETT, GRIFFITH & BLACKMAN**  
2006 Adams Avenue, LaGrande, Oregon  
Map of Survey  
Lot 4  
Grande Ronde Medical Center  
Subdivision, LaGrande  
UNION COUNTY, OREGON

SURVEYED FOR	Grande Ronde Hospital	
SURVEYED BY	R. G. R.	11/98
Scale: 1" = 30'	Drawn by: N. W. V.	11/98



Survey Number 048-1998