

BASIS OF BEARING

Solar observation taken at a point 1247.40 feet North and 2644.07 feet West of the Southwest corner of Section 4, Township 1 South, Range 40 East, of the Willamette Meridian

SCALE: 1" = 500'

NARRATIVE

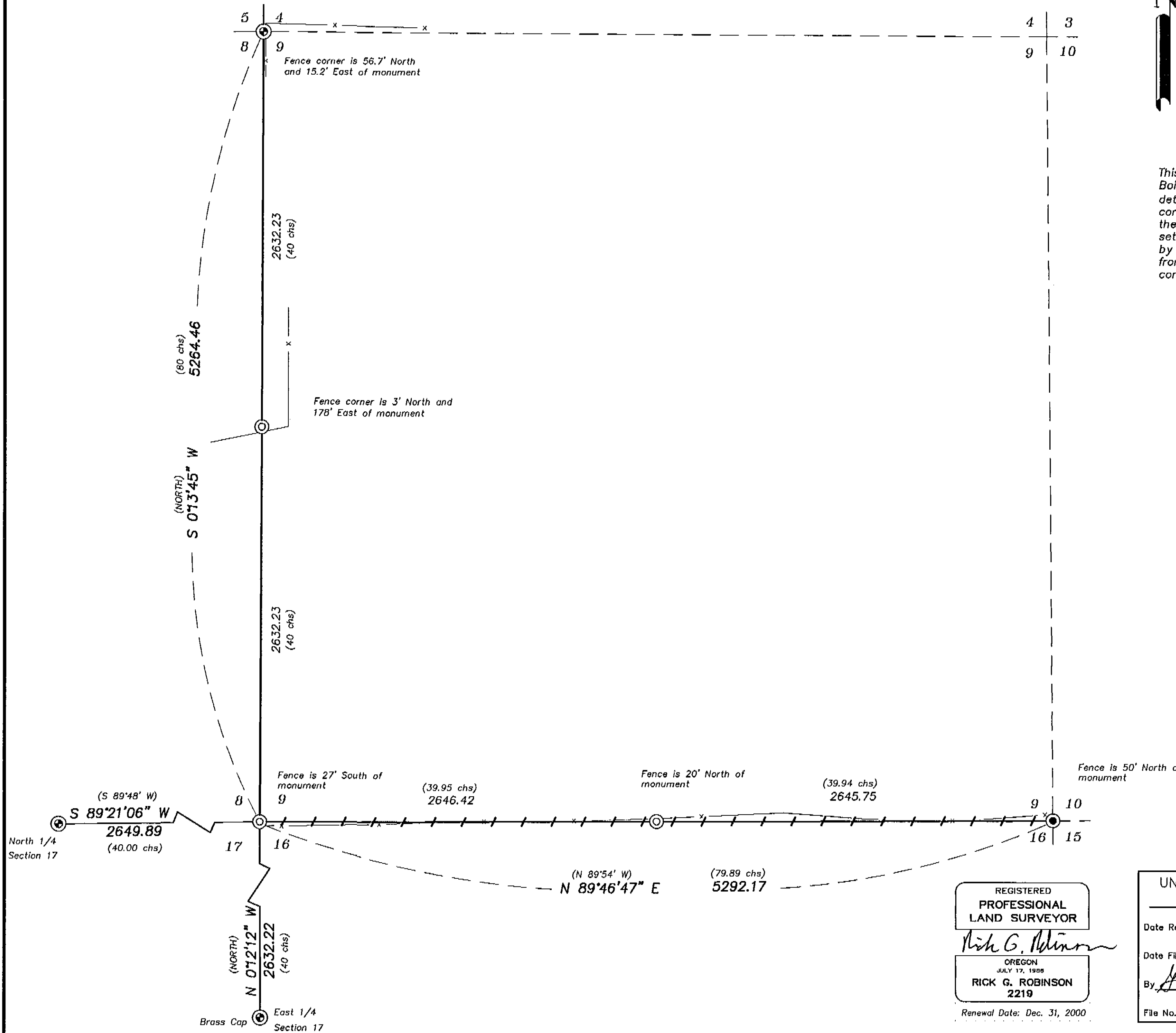
This survey was done at the request of Steve Gurnsey, on behalf of Boise Cascade Corporation, and Ken Stanhope, adjoining landowner, to determine the positions of the West 1/4, South 1/4, and Southeast corner of Section 9. No evidence of these corners were found. I set these corners by standard proportion from the found monuments. I set steel fence posts along the South line of Section 9 as directed by Mr. Gurnsey and Mr. Stanhope. The existing fence lines are away from the true section lines as shown. I find no other unusual conditions on this survey.

REFERENCE MATERIAL

Original GLO Contract Number 450 by Henry Meldrum, dated December 1st, 1882
 Union County monumentation records
 Survey Number 032-1980
 Survey Number 066-1974
 Survey Number 033-1998

LEGEND

- ⊙ Found 2 1/2" brass cap monument set by survey number 32-80
- ⊕ Found 2 1/2" aluminum monument as per Union County Monumentation records (unless otherwise noted)
- ⊙ Set 2 1/2" aluminum monument at position determined by survey
- () Record information of GLO contract No. 450
- x - Barb wire fence
- + + + Posted Line



REGISTERED
 PROFESSIONAL
 LAND SURVEYOR
 Rick G. Robinson
 OREGON
 JULY 17, 1988
 RICK G. ROBINSON
 2219
 Renewal Date: Dec. 31, 2000

UNION COUNTY
 SURVEYOR
 Date Received 10/7/98
 Date Filed 10/9/98
 By: [Signature]
 File No. 039-1998

BAGETT, GRIFFITH & BLACKMAN
 2006 Adams Avenue, LaGrande, Oregon
 Map of Survey
 Retracement of the
 South and West Lines of Section 9,
 Township 1 South, Range 40 East
 of the Willamette Meridian
 UNION COUNTY, OREGON

SURVEYED FOR	Boise Cascade Corporation	
SURVEYED BY	R. G. R.	10/98
Scale: 1" = 500'	Drawn by: N. W. V.	10/98

SURVEY NUMBER 039-1998