

BASIS OF BEARING

Solar observation taken at the North quarter corner of Section 15, Township 1 North, Range 40 East of the Willamette Meridian.

SCALE: 1" = 100'

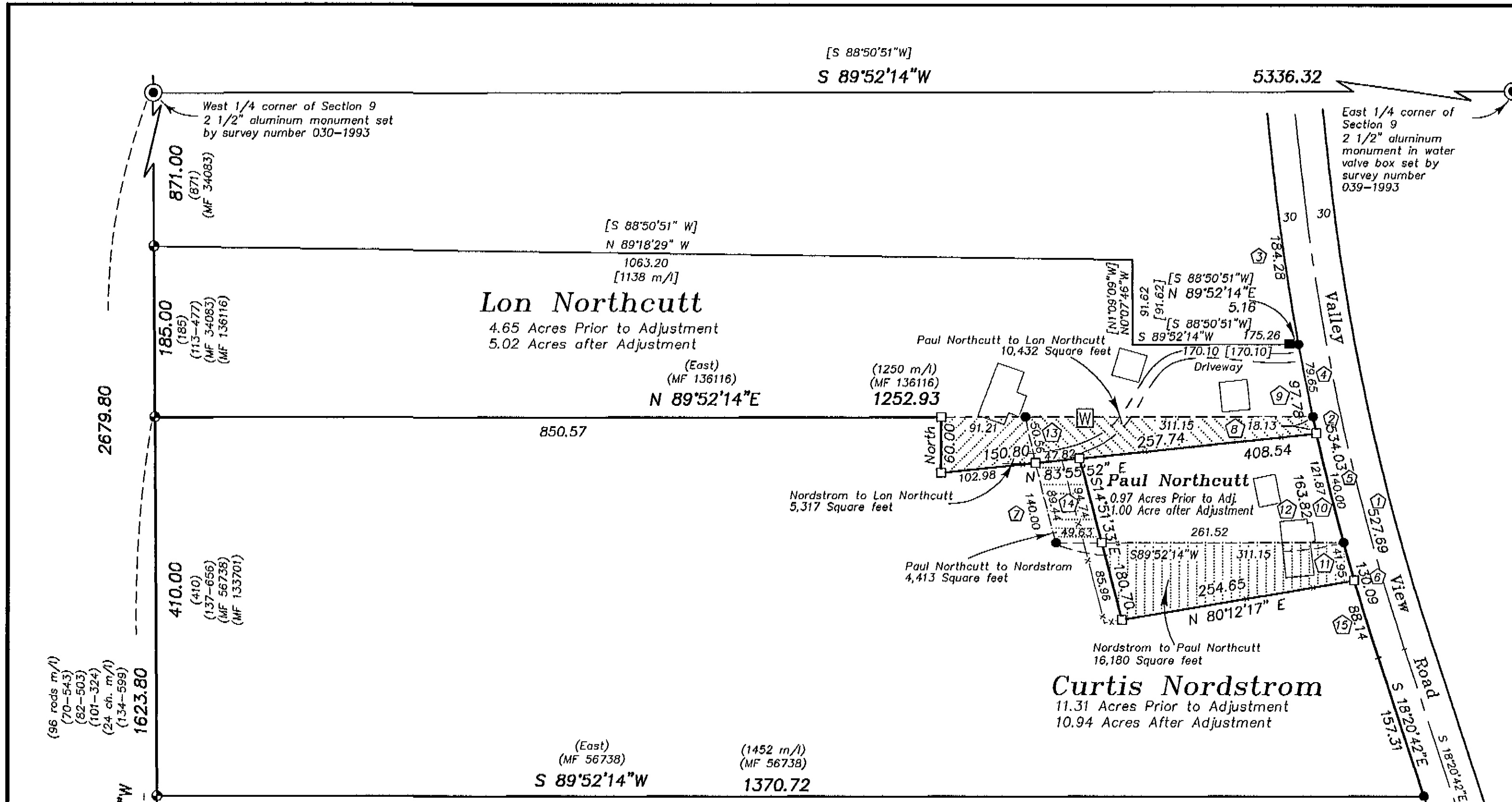
REFERENCE MATERIAL

Deed References			
Volume C	Page 419	Volume 101	Page 324
Volume C	Page 421	Volume 103	Page 339
Volume D	Page 680	Volume 103	Page 351
Volume V	Page 226	Volume 104	Page 587
Volume 27	Page 8	Volume 106	Page 233
Volume 33	Page 512	Volume 109	Page 640
Volume 34	Page 144	Volume 110	Page 625
Volume 35	Page 165	Volume 113	Page 477
Volume 38	Page 181	Volume 113	Page 574
Volume 38	Page 577	Volume 123	Page 255
Volume 47	Page 203	Volume 126	Page 306
Volume 47	Page 624	Volume 126	Page 307
Volume 48	Page 3	Volume 133	Page 65
Volume 51	Page 154	Volume 134	Page 275
Volume 62	Page 429	Volume 134	Page 497
Volume 64	Page 579	Volume 134	Page 599
Volume 69	Page 514	Volume 134	Page 611
Volume 69	Page 515	Volume 137	Page 656
Volume 70	Page 543	Volume 143	Page 633
Volume 75	Page 498	Volume 148	Page 131
Volume 79	Page 230	Volume 148	Page 416
Volume 82	Page 503	Volume 148	Page 418
Volume 85	Page 182	Volume 151	Page 108
Volume 86	Page 330	Volume 151	Page 314
Volume 87	Page 317	Volume 151	Page 481
Volume 87	Page 535	Volume 152	Page 458
Volume 88	Page 6	Volume 152	Page 595
Volume 88	Page 7	Volume 153	Page 611
Volume 89	Page 270	Volume 153	Page 641
Volume 90	Page 375	Volume 157	Page 399
Volume 93	Page 120	Volume 159	Page 618
Volume 93	Page 507	Volume 159	Page 619
Volume 97	Page 307	Volume 160	Page 203

Survey References		Microfilm No.
Union County monumentation records		No. 34082
Survey Number 56-74		No. 34083
Survey Number 17-80		No. 38842
Survey Number 030-1993		No. 50507
Survey Number 039-1993		No. 56738
Survey Number 047-1994		No. 72270
Survey Number 027-1998		No. 133701
		No. 136116
		No. 151881

LEGEND

- Found 2 1/2" aluminum monument as per Union County monumentation records
- Found 5/8" pin set by survey number 56-74
- ⊙ Found 5/8" iron pin with plastic cap marked BGA SURVEY MARKER set by survey number 047-1994
- Found 5/8" iron pin with plastic cap marked BGB SURVEY MARKER set by survey number 027-1998
- Set 5/8"x30" iron pin with plastic cap marked BCB SURVEY MARKER
- ⑦ Curve Number (To relate to Curve Table)
- () Record information of deed specified
- [] Record information of survey number 56-74
- W Existing Well
- Centerline of road
- x - Existing fence line
- - - Existing Driveway



CURVE TABLE

1 Total CL	2 Total R/W	3 R/W North	4 Northcutt (Orig)	5 1 Acre E (Orig)	6 South Parcel	7 1 Acre W (Orig)	
Δ = 12'06"15"	Δ = 12'06"15"	Δ = 4'10"37"	Δ = 1'48"20"	Δ = 3'10"24"	Δ = 2'56"55"	Δ = 3'10"24"	
L = 527.69	L = 534.03	L = 184.28	L = 79.65	L = 140.00	L = 130.09	L = 140.00	
R = 2497.81	R = 2527.81	R = 2527.81	R = 2527.81	R = 2527.81	R = 2527.81	R = 2527.81	
T = 264.83	T = 268.01	T = 92.18	T = 39.83	T = 70.02	T = 65.06	T = 70.02	
L.C. = 526.71	L.C. = 533.03	L.C. = 184.24	L.C. = 79.65	L.C. = 139.98	L.C. = 130.07	L.C. = 139.98	
S 12'17"34"E	S 12'17"34"E	S 8'19"45"E	S 11'19"13"E	S 13'48"35"E	S 16'52"14"E	S 13'48"35"E	
8 North Portion of E 1 Acre (Orig)	9 Total E RW Adj. Northcutt	10 South Portion of E 1 Acre (Orig)	11 South Portion of E 1 Acre (Adj)	12 Total RW E 1 Acre (Adj)	13 North portion of W 1 Acre (Orig)	14 South portion of W 1 Acre (Orig)	15 North portion of Nordstrom (Adj)
Δ = 0'24"39"	Δ = 2'12"59"	Δ = 2'45"44"	Δ = 0'57"03"	Δ = 3'42"47"	Δ = 1'08"46"	Δ = 2'01"38"	Δ = 1'59"52"
L = 18.13	L = 97.78	L = 121.87	L = 41.95	L = 163.82	L = 50.56	L = 89.44	L = 88.14
R = 2527.81	R = 2527.81	R = 2527.81	R = 2527.81	R = 2527.81	R = 2527.81	R = 2527.81	R = 2527.81
T = 9.07	T = 48.90	T = 60.95	T = 20.98	T = 81.94	T = 25.28	T = 44.72	T = 44.07
L.C. = 18.13	L.C. = 97.78	L.C. = 121.86	L.C. = 41.95	L.C. = 163.79	L.C. = 50.56	L.C. = 89.43	L.C. = 88.13
S 12'25"43"E	S 11'31"33"E	S 14'00"55"E	S 15'52"19"E	S 14'29"26"E	S 12'47"46"E	S 14'22"58"E	S 17'20"46"E

NARRATIVE

This survey was done at the request of Lon Northcutt. The purpose of this survey is to monument an adjustment of the common ownerships to remove the encroachments discovered by survey number 027-1998. See that survey for a detailed explanation of the placement of the corners of the deeds prior to adjustment. This adjustment is done in conformance with the Union County Planning Department (See approval below). The location of the adjusted lines was determined by the owners of the property involved. I have prepared legal descriptions for the transfer of property to result in the final configuration shown. I find no unusual conditions on this survey.

APPROVAL

Approved as a Lot Line Adjustment this 23rd day of September, 1998.

Harley Jenkins
Harley Jenkins
Union County Planning Director

REGISTERED PROFESSIONAL LAND SURVEYOR
Rick G. Robinson
RICK G. ROBINSON
2219
Renewal Date: Dec. 31, 2000

UNION COUNTY SURVEYOR
Date Received 9/23/98
Date Filed 9/26/98
By Guy T. Blackman
File No. 036-1998

BAGETT, GRIFFITH & BLACKMAN
2006 Adams Avenue, LaGrande, Oregon
Map of Survey
Lot Line Adjustment of Tracts within the Southwest quarter of Section 9, Township 1 North, Range 39 East of the Willamette Meridian
UNION COUNTY, OREGON

SURVEYED FOR	Lon Northcutt	
SURVEYED BY	R.G.R.	9/98
Scale: 1" = 100'	Drawn by: R.G.R.	9/98

SURVEY NUMBER 036-1998