

# BASIS OF BEARING

Forward bearing as published by the U.S.C. and G.S. from  $\Delta$  COLLEGE to  $\Delta$  VALLEY Dated 1946.

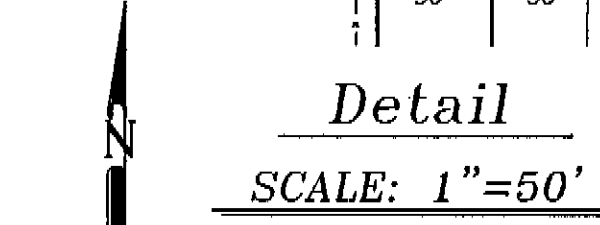
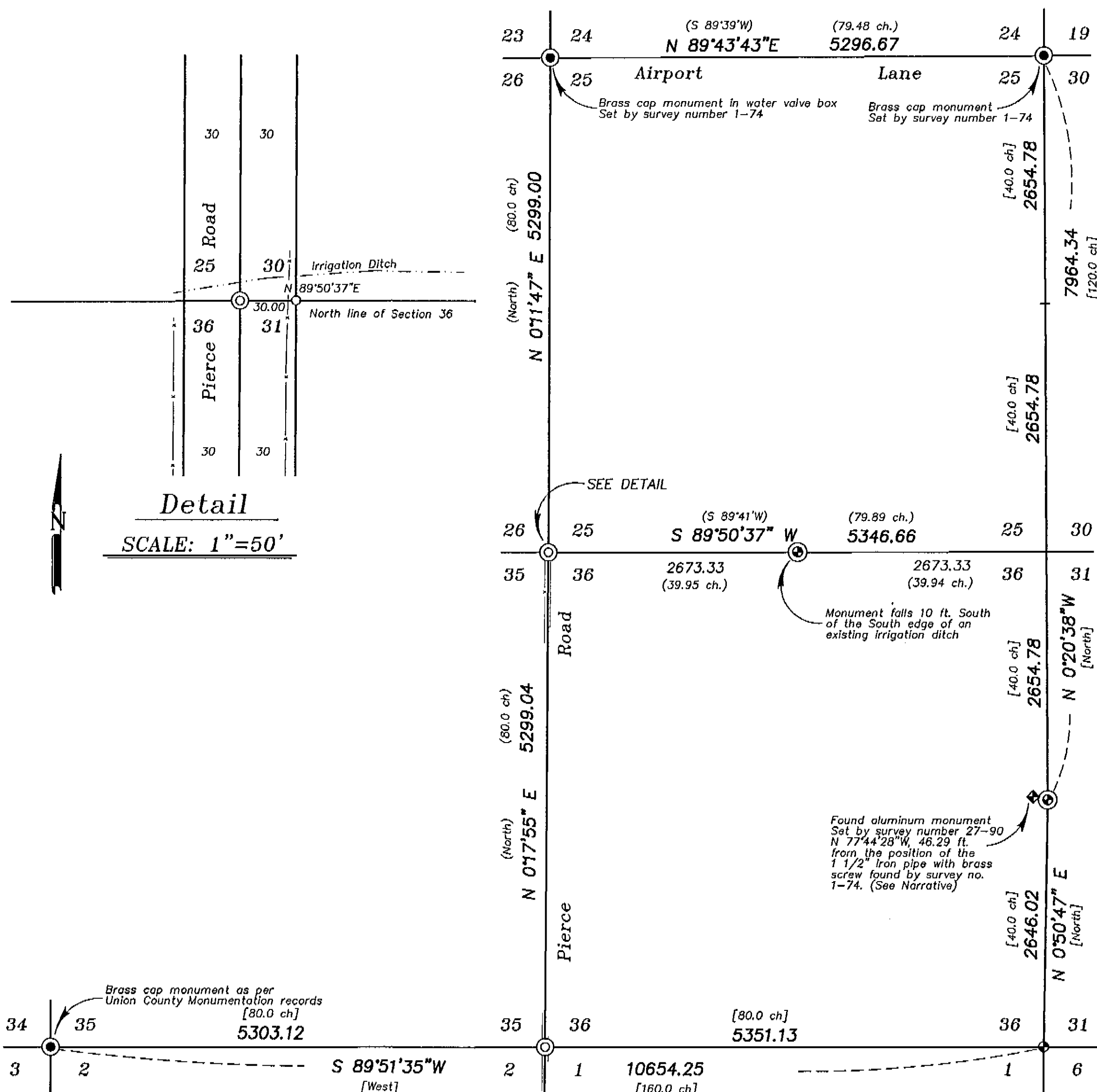
SCALE: 1" = 1000'

## REFERENCE MATERIAL






Union County Monumentation Records  
 GLO Contract Number 102  
 GLO Contract Number 103  
 Survey Number 1-74  
 Survey Number 33-74  
 Survey Number 23-90  
 Survey Number 27-90  
 Survey Number 007-1996

## NARRATIVE

This survey was done at the request of David Larson on behalf of the Oregon Department of Fish and Wildlife. The purpose of this survey is to monument the North line of the Northwest quarter of Section 36. The corners marking the ends of this line are not in. The Southeast corner of Section 36 is monumented. I locate the Southwest corner of Section 36 on the line between the Southeast corner of Section 36 and the Southwest corner of Section 35, at the intersection of the centerline of Pierce Road as constructed. I locate the Northwest corner of Section 36 at a point in the centerline of Pierce Road, as constructed, at the proportionate distance between the Southwest corner of Section 36, as previously described, and the monument set by survey number 1-74 marking the Northwest corner of Section 25. There are multiple corners at the Southeast and Southwest corners of Section 24. I use the monuments set by survey number 1-74, as that survey was reviewed by the Board of Engineering Examiners at the time. Survey number 23-90 chose to ignore those monuments, and set additional monuments in other positions. The basis for the location of the East line of Sections 24, 25 and 30 on survey number 1-74 was a proportion between the East quarter corner of Section 13 and the East quarter corner of Section 36. The monument at the East quarter corner of Section 36 was pointed out on the ground by the County Surveyor at the time. It was a concrete filled pipe with a brass screw like the township corner a half mile South. It was set in a fence corner under a large tree. The fence has since been removed, and the monument destroyed. I reestablish the position by going the record bearing and distance from the monument set by survey number 1-74 at the Northeast corner of Section 25. Survey number 27-90 (done by the same surveyor as survey number 23-90) again chose to ignore survey number 1-74 and monumented this corner by reconstructing evidence from another survey. The monument set by the 1990 survey is West of the corner found by survey number 1-74 as shown. I place the Northeast corner of Section 36 at the proportionate position as per survey number 1-74, and place the North quarter corner of Section 36 at proportionate position from the Northeast and Northwest corners of Section 36 as previously described. I set an iron pin at the intersection of the East line of Pierce Road and the North line of Section 36. I find an existing irrigation ditch North of the North line of Section 36, as also indicated on survey number 33-74. I find no other unusual conditions on this survey.



## LEGEND

-  Found monument as described as per Union County monumentation records
-  Found 1 1/2" concrete filled pipe with brass screw
-  Set 2 1/2" brass cap on 5/8" copper clad iron pin
-  Set 2 1/2"x30" aluminum monument
-  Set 5/8"x30" iron pin with plastic cap marked BCB SURVEY MARKER
- [ ] Record information of GLO Contract number 102 by Timothy W. Davenport, dated July 20, 1863
- ( ) Record information of GLO Contract Number 103 by David P. Thompson, dated September 3, 1863
- x-x-x- Existing fence line
- - - - - Centerline of Irrigation Ditch

## NOTE

For monumentation information, see individual monumentation sheets filed separately

UNION COUNTY SURVEYOR

Date Received 9-11-98

Date Filed 9/26/98

By *Hyun P. Lee*

File No. 034-1998

REGISTERED PROFESSIONAL LAND SURVEYOR

*Rick G. Robinson*

OREGON JULY 17, 1986

RICK G. ROBINSON 2219

Renewal Date: Dec. 31, 2000

**BAGETT, GRIFFITH & BLACKMAN**

2006 Adams Avenue, LaGrande, Oregon

Map of Survey

Location of the North line of the Northwest quarter of Section 36, Township 3 South, Range 38 East of the Willamette Meridian

UNION COUNTY, OREGON

SURVEYED FOR	Oregon Dept. of Fish and Wildlife	
SURVEYED BY	R.G.R.	9-98
Scale: 1" = 1000'	Drawn by: R.G.R.	9-98

SURVEY NUMBER 034-1998