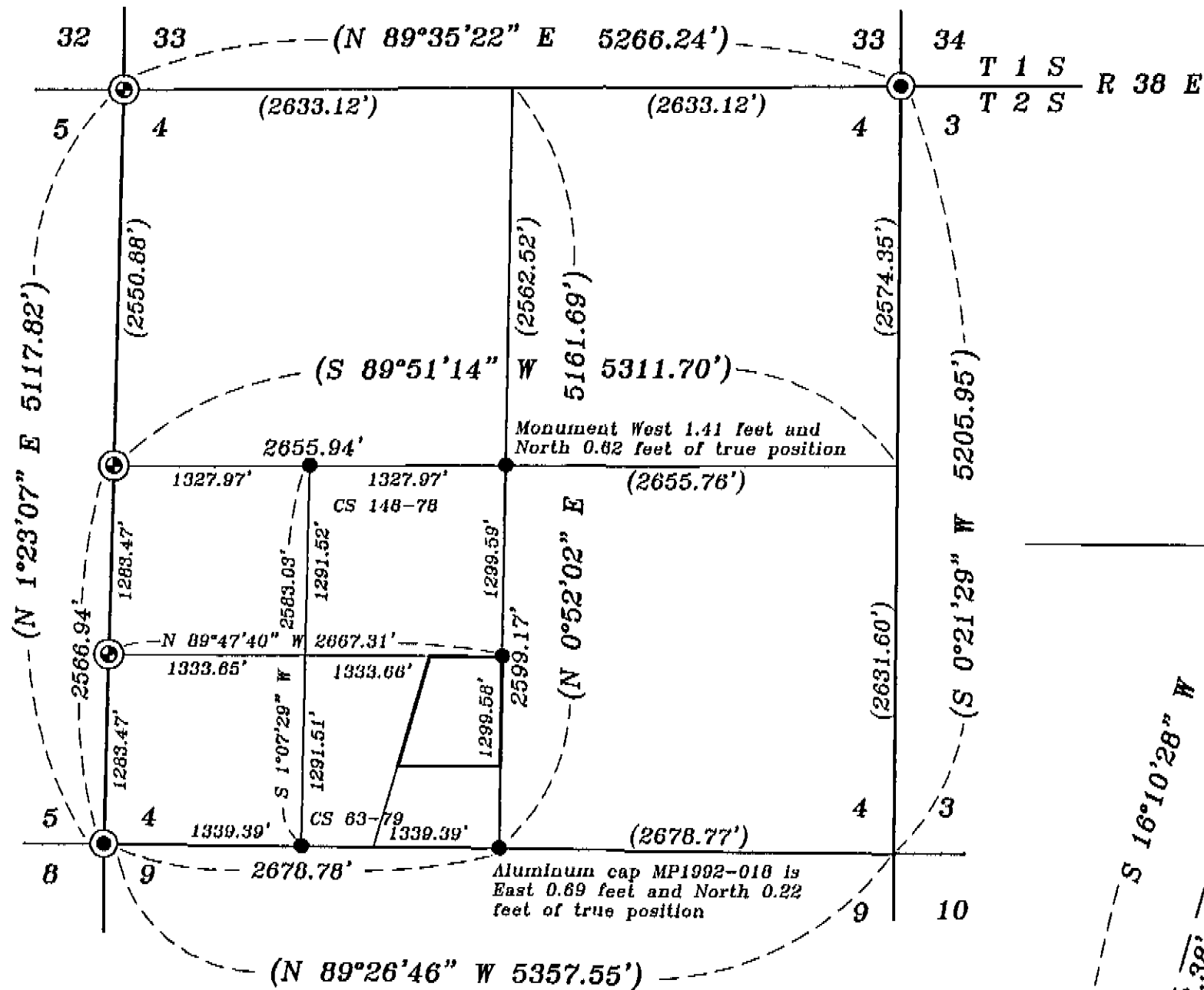


NARRATIVE

This survey was done at the request of John Collins. Mr. Collins wanted to locate and monument the corners of his property. In the subdivision of Section 4 there are differences between the true bearing and distance and the monuments. The monuments in error are called out as found and record measurements are used for subdivision of the section. The North and East lines were established by running the distance recorded on the deed along the pertaining section lines. The West line yields to senior rights of the adjoining parcel as perpetuated by Union County Deed record 109684. The south line runs record bearing, West, from the pertaining section line to intersection with the adjoining parcel. The parcel is subject to an easement for roadway and utility purposes as shown. I find no other unusual conditions with this survey.

SCALE: 1" = 1000'



LEGEND

- Set 5/8" rebar with yellow plastic cap marked "BGB SURVEY MARKER"
- Found Brass Cap see Union County Monumentation Records
- Found 5/8 rebar monument set by County Survey 073-78 and corrected County Survey 001-90, unless otherwise noted
- ⊙ Found Aluminum Cap monument set by County Survey 042-83
- () Record measurement of County Survey West 1/16 between Sections 4 and 9 001-90

Center 1/4 of Section 4



BASIS OF BEARING

Forward bearing as published by the U.S.C. and G.S. from ΔCOLLEGE to ΔVALLEY Dated 1946.

SCALE: 1" = 100'

REFERENCE MATERIAL

Union County Monumentation Records

- Union County Survey No. 073-78
- Union County Survey No. 074-78
- Union County Survey No. 148-78
- Union County Survey No. 063-79
- Union County Survey No. 042-83
- Union County Survey No. 001-90
- Minor Partition No. MP1992-18

UNION COUNTY DEED RECORDS

- Microfilm no.
- 69058
 - 109683
 - 109684
 - 134688
 - 137556
 - 139463
 - 144298

UNION COUNTY SURVEYOR

Date Received 6-18-98

Date Filed 6/25/98

By P. Robinson Deary

File No. 020-1998

REGISTERED PROFESSIONAL LAND SURVEYOR

Gregory T. Blackman

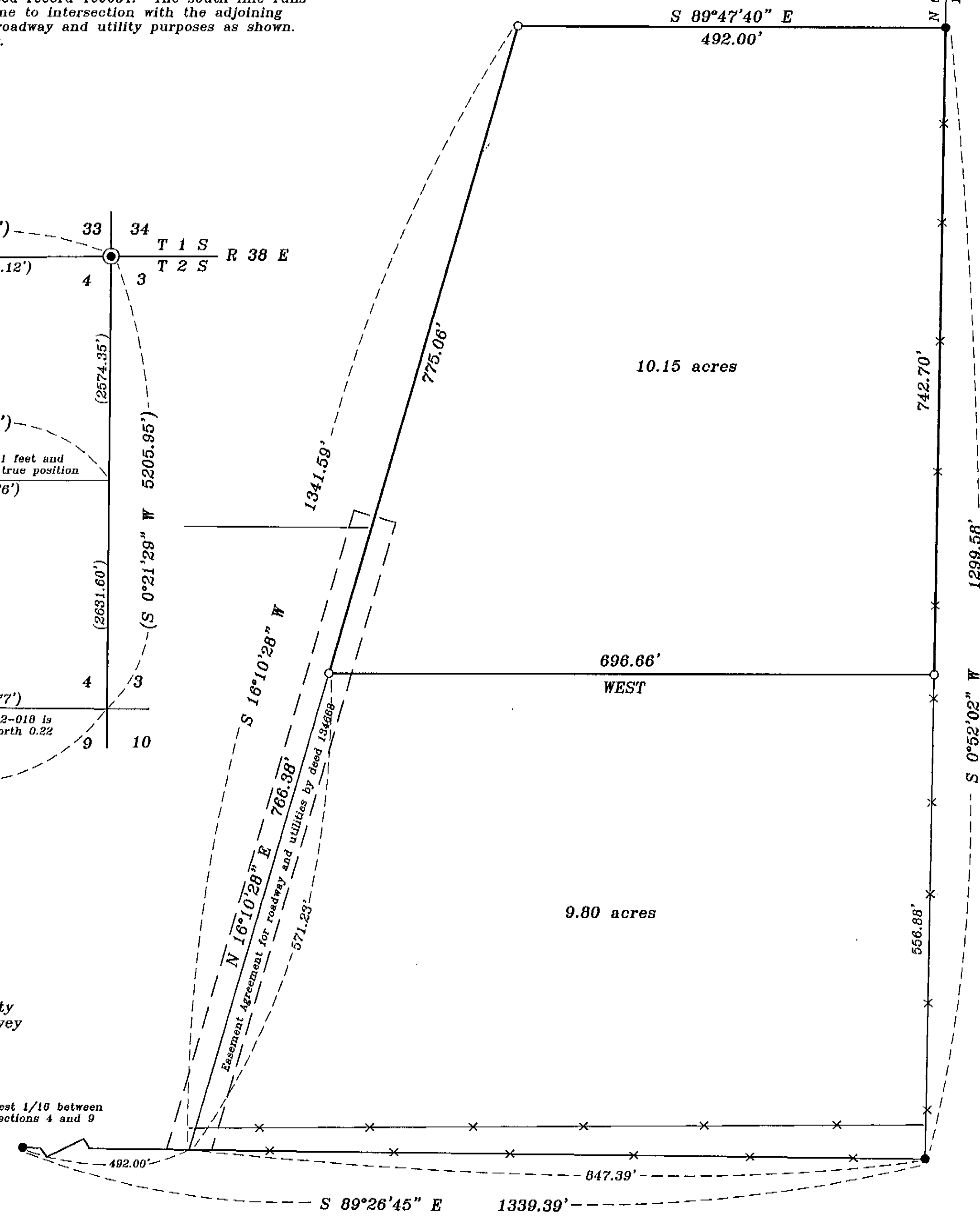
OREGON
JULY 13, 1973
GREGORY T. BLACKMAN
991

Renewal Date: Dec. 31, 1999

BAGETT, GRIFFITH & BLACKMAN
2006 Adams Avenue, LaGrande, Oregon

Map of Survey
Parcel in a portion of the Southeast 1/4 of the Southwest 1/4 of Section 4, Township 2 South, Range 38 East of the Willamette Meridian.
UNION COUNTY, OREGON

SURVEYED FOR	JOHN COLLINS	
SURVEYED BY	G. T. B.	11/98
Scale: 1" = 100'	Drawn by: N. W. V.	11/98



SURVEY NUMBER 020-1998