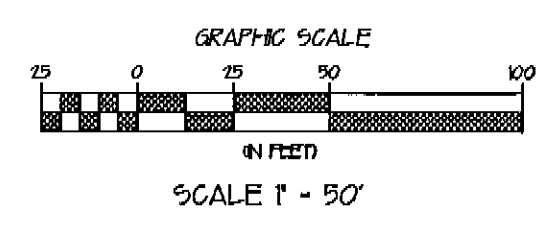
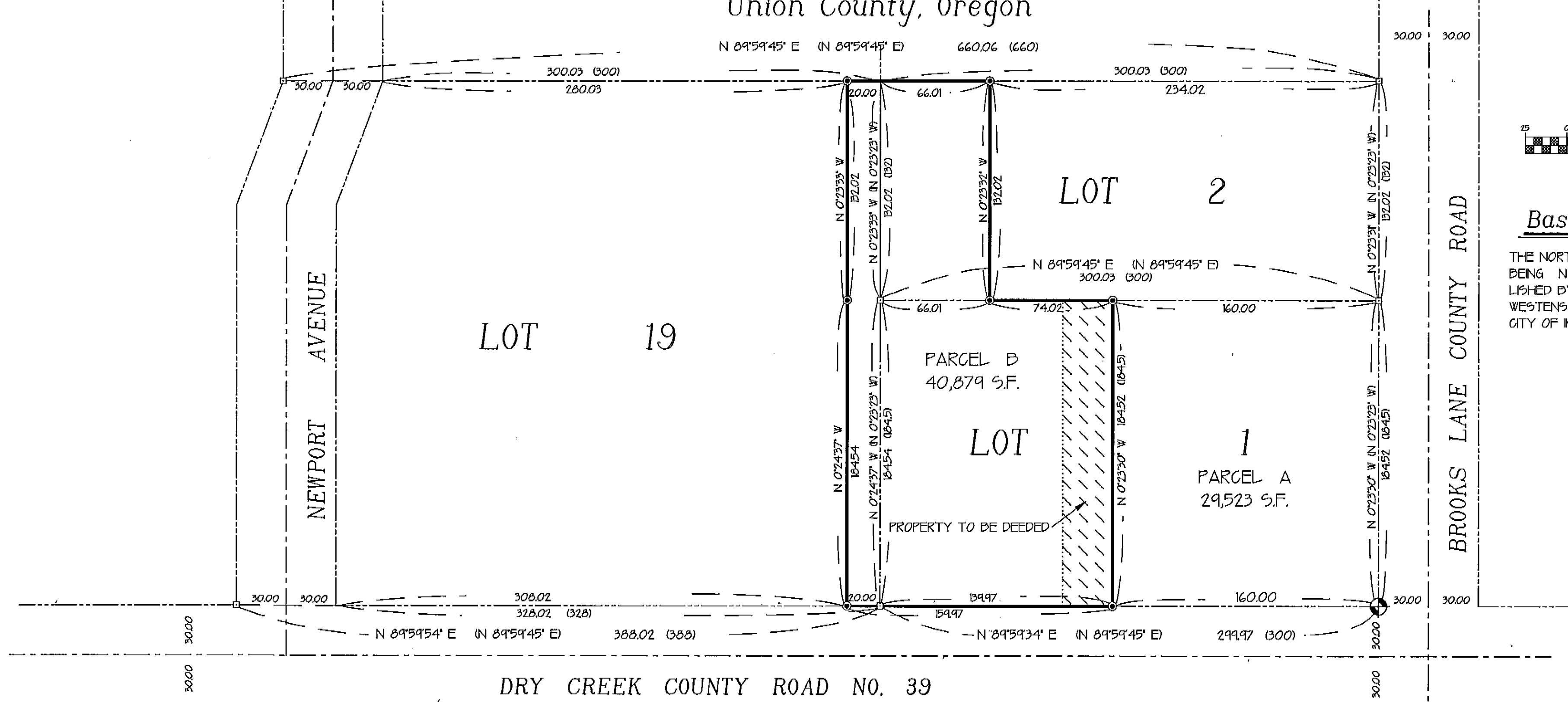


Map of Survey
 A Part of Lots 1, 2, and 19 of Block 1
 of Westenskow's Subdivision to Imbler
 Located in the SE1/4 of the NW1/4 of Section 20,
 T.1S., R.39E. in the Willamette Meridian
 Union County, Oregon



Basis of Bearing

THE NORTH LINE OF LOTS 2 AND 19 BEING N 89°59'45" E AS ESTABLISHED BY THE ORIGINAL PLAT OF WESTENSKOW'S SUBDIVISION TO THE CITY OF IMBLER

Narrative

THIS SURVEY WAS DONE AT THE REQUEST OF ROBERT A. AND DOROTHY DUBY PEACOCK FOR THE PURPOSE OF LOCATING THE ESTABLISHED DEED LINES ALONG WITH A 30 FOOT (APPROXIMATE) STRIP OF LAND THEY INTEND TO ACQUIRE ON THE EAST SIDE (SHOWN BY HATCHING). THE INDICATED PARCEL A WAS TO HAVE A MINIMUM OF 29,500 SQUARE FEET REMAINING PER THE AMENDED DECLARATION OF RESTRICTIONS (MF, #44697). I PROCEEDED TO LOCATE THE PROPERTY BY FINDING THE ORIGINAL MONUMENTS AS ESTABLISHED BY THE PLAT OF WESTENSKOW'S SUBDIVISION. I DID NOT FIND THE NORTHEAST CORNER TO LOT 2 BUT PROPORTIONED THE LOCATION FROM THE FOUND MONUMENT ON THE WEST LINE OF NEWPORT AVENUE. I THEN DROVE THIS LINE EAST TO THE FOUND MONUMENT AT THE NE CORNER OF LOT 2. ALL OF THE ORIGINAL MONUMENTS WERE FOUND AS INDICATED AND LOST MONUMENTS WERE ESTABLISHED BY USING SINGLE PROPORTIONING METHODS. THE NEW CORNERS WERE ESTABLISHED AS SHOWN AND NO FURTHER PROBLEMS WERE ENCOUNTERED.

Legend

- ⊕ FOUND 2" PIPE WITH BRASS CAP MKD. INITIAL POINT SET BY PLAT OF WESTENSKOW'S SUBDIVISION
- ⊠ FOUND 5/8" REBAR SET BY PLAT OF WESTENSKOW'S SUBDIVISION
- ⊙ SET 5/8" x 30" REBAR WITH CAP MARKED L.S. 1982

References

- PLAT OF WESTENSKOW'S SUBDIVISION TO THE CITY OF IMBLER
- MF. #130965
- MF. #973395
- MF. #44697

REGISTERED
 PROFESSIONAL
 LAND SURVEYOR
Norman J. Paulus Jr.
 OREGON
 July 17, 1928
 Norman J. Paulus Jr.
 1952
 Expires December 31, 1998

UNION COUNTY
 SURVEYOR
 Date Received 4/9/98
 Date Filed 4/11/98
 By R. Robinson, Deputy
 File No. 014-1998

DRAWN BY: NORM PAULLUS	DATE: APRIL 6, 1998
CHECKED BY: NJP	DRAWING NO:
JOB NO:	SHEET: 1 OF 1

Survey No. 014-1998