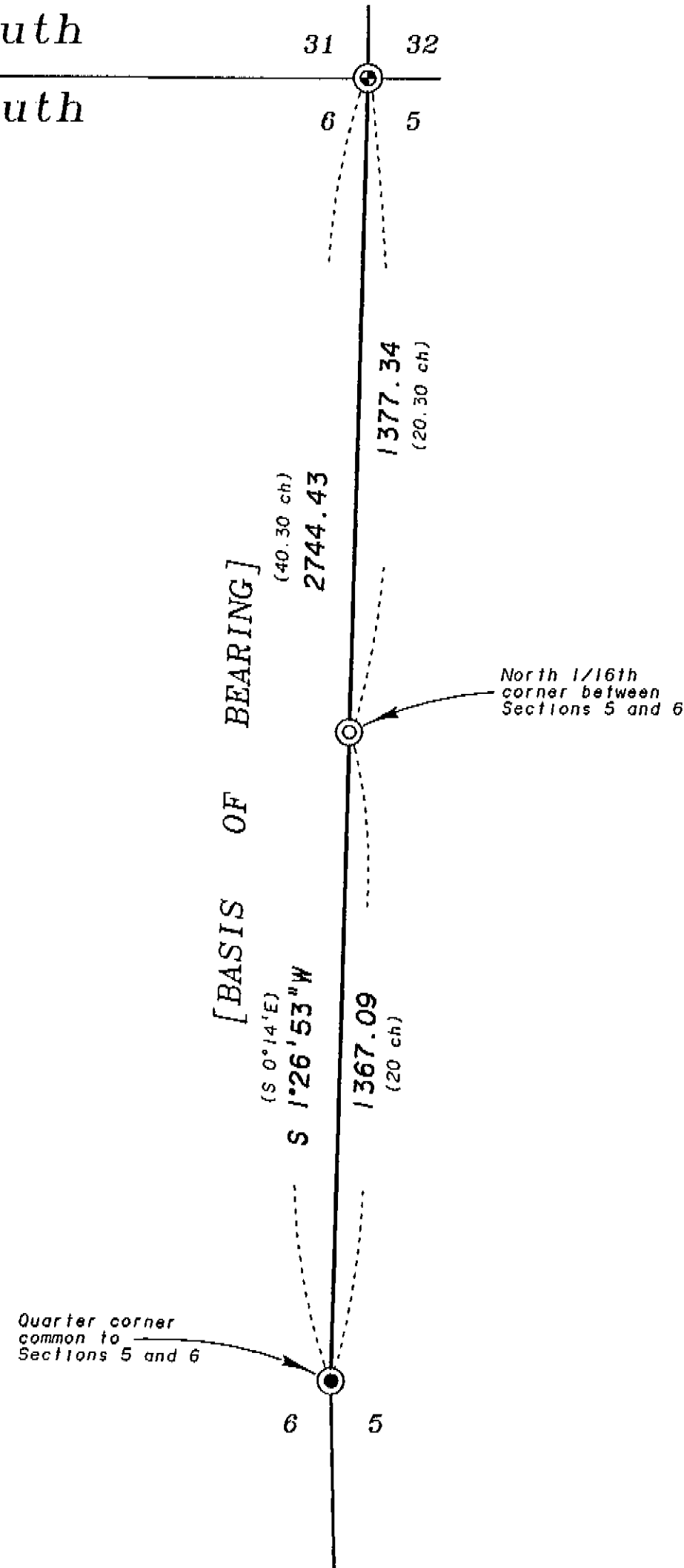


Township 1 South  
Township 2 South



**BASIS OF BEARING**

The East line of the Northeast quarter of Section 6, Township 2 South, Range 36 East of the Willamette Meridian being South 1°26'53" West, as per survey number 043-1995.

SCALE: 1"=300'

**REFERENCE MATERIAL**

Union County monumentation records  
Original GLO Contract number 635  
by Manius Buchanan, dated April 19, 1895  
Survey Number 47-80  
Survey Number 043-1995

**LEGEND**

- Found brass cap monument as per Union County monumentation records (Set by survey number 47-80)
- ⊙ Found aluminum monument as per Union County monumentation records
- ⊙ Set 2 1/2"x30" aluminum monument at position determined by survey
- ( ) Record bearing and distance of Original GLO Contract number 635 by Manius Buchanan, dated April 19, 1895

**NARRATIVE**

This survey was done at the request of Stan Wilde on behalf of Boise Cascade Corporation. Mr. Wilde requested the monumentation of the North 1/16th corner between Sections 5 and 6. I base this survey on survey number 043-1995, which located the controlling corners for this monumentation. I place the monument between these corners proportionate to the distances called for in the original GLO Survey, as per the BLM Manual of Surveying Instructions (1973). This corner falls in the West edge of a paved driveway of an adjoining ownership. The owners of the adjoining tract were present at the time of monumentation. I find no other unusual conditions on this survey.

REGISTERED  
PROFESSIONAL  
LAND SURVEYOR  
*Rick G. Robinson*  
OREGON  
JULY 17, 1988  
RICK G. ROBINSON  
2219  
Renewal Date: Dec. 31, 1998

UNION COUNTY  
SURVEYOR  
Date Received 11/8/97  
Date Filed 11/8/97  
By *Greg L. Blackman*  
File No. 033-1997

BAGETT, GRIFFITH & BLACKMAN  
2006 Adams Avenue, LaGrande, Oregon  
Map of Survey  
Monumentation of the North 1/16th corner between Sections 5 and 6, Township 2 South, Range 36 East of the Willamette Meridian  
UNION COUNTY, OREGON  
SURVEYED FOR Boise Cascade Corporation  
SURVEYED BY R.G.R. 11/97  
Scale: 1" = 300' Drawn by: R.G.R. 11/97

SURVEY NUMBER 033-1997