

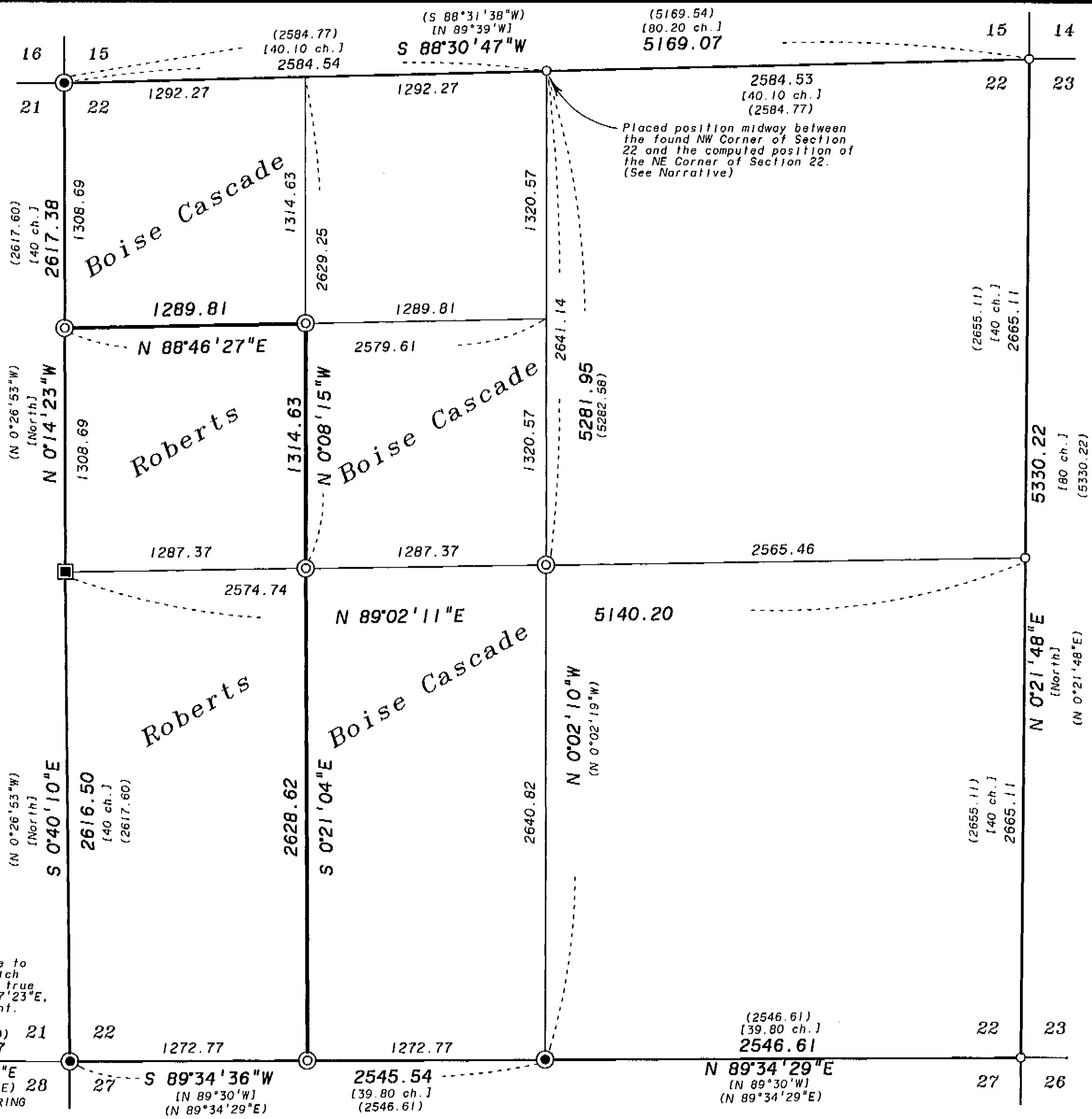
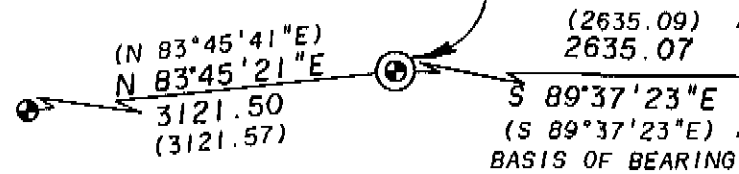


SCALE: 1"=500'

BASIS OF BEARING

The bearing between the Southeast corner and the Witness corner monument for the South quarter corner of Section 21, Township 2 South, Range 40 East of the Willamette Meridian, being South 89°37'23" East, as per survey number 24-90.

Bearings and distances are to the aluminum monument, which is a witness corner. The true corner position is S 89°37'23"E, 5.70 feet from the monument.



REFERENCE MATERIAL

Original GLO Contract number 450 by Henry Meldrum, dated June 11, 1882
Union County monumentation records
Survey Number 13-86
Survey Number 24-90

LEGEND

- Found Brass cap set in Boulder marked "R-12 1937 U.S. Bureau of Reclamation B.M."
- ⊙ Found 2 1/2" brass cap monument set by survey number 13-86
- ⊙ Found 2 1/2" aluminum monument set by survey number 24-90
- Position of corner monument as per survey number 24-90 unless otherwise noted
- Set 2 1/2" aluminum monument at position of found GLO survey evidence
- ⊙ Set 2 1/2" aluminum cap at position determined by survey
- [] Record information of GLO Contract number 450 by Henry Meldrum
- () Record information of survey number 24-90

NOTE: For monumentation information, see monumentation records filed separately.

NARRATIVE

This survey was done at the request of Steve Gurnsey, representing Boise Cascade Corporation. The purpose of the survey was to locate the Southwest quarter of the Northwest quarter and the West half of the Southwest quarter of Section 22. I base my survey on survey number 24-90, which monumented a majority of the corners of Section 22. I physically located the Northwest corner, Southwest corner and South quarter corner of Section 22, as well as the witness corner monument at the South quarter corner of Section 21, and the Bureau of Reclamation brass cap, all located by the 1990 survey. I place the remaining corners of the section at the record position of survey number 24-90, with the exception of the North quarter corner, which was placed at the midpoint of the line determined between the Northwest and Northeast corners of Section 22. Survey number 24-90 also did not find the West quarter corner of Section 22 and place the position proportionately. I did find the original stone set by the Meldrum GLO survey (See monumentation record filed separately). I then subdivide the section in accordance with the BLM Manual of Surveying Instructions (1973). Mr. Gurnsey was concerned in particular about the common lines of Boise Cascade with the Roberts ownership. I placed steel fence posts along this line at random spacing at Mr. Gurnsey's request. I find the true North line of the Roberts ownership falls approximately 20-40 feet North of an existing East-West blaze line. The area near the East line of the Roberts tract has been logged East of the true ownership. It is apparent that the logging was done to an existing fence, which appears to be a drift fence surrounding a timbered flat area. The Center-West 1/16th corner of Section 22 falls in an area formerly used by Mr. Roberts as a garden. I find no other unusual conditions on this survey.

UNION COUNTY SURVEYOR	
Date Received	9-9-97
Date Filed	9-9-97
By	Henry T. Olson
File No.	029-1997

REGISTERED PROFESSIONAL LAND SURVEYOR
 Rick G. Robinson
 OREGON JULY 17, 1988
 RICK G. ROBINSON 2219
 Renewal Date: Dec. 31, 1998

BAGETT, GRIFFITH & BLACKMAN
 2006 Adams Avenue, LaGrande, Oregon
 Map of Survey

Determination of property lines within the Northwest quarter and Southwest quarter of Section 22, Township 2 South, Range 40 East of the Willamette Meridian
 UNION COUNTY, OREGON

SURVEYED FOR	Boise Cascade Corporation	
SURVEYED BY	R. G. R.	9-97
Scale: 1" = 500'	Drawn by: R. G. R.	9-97

SURVEY NUMBER 029-1997