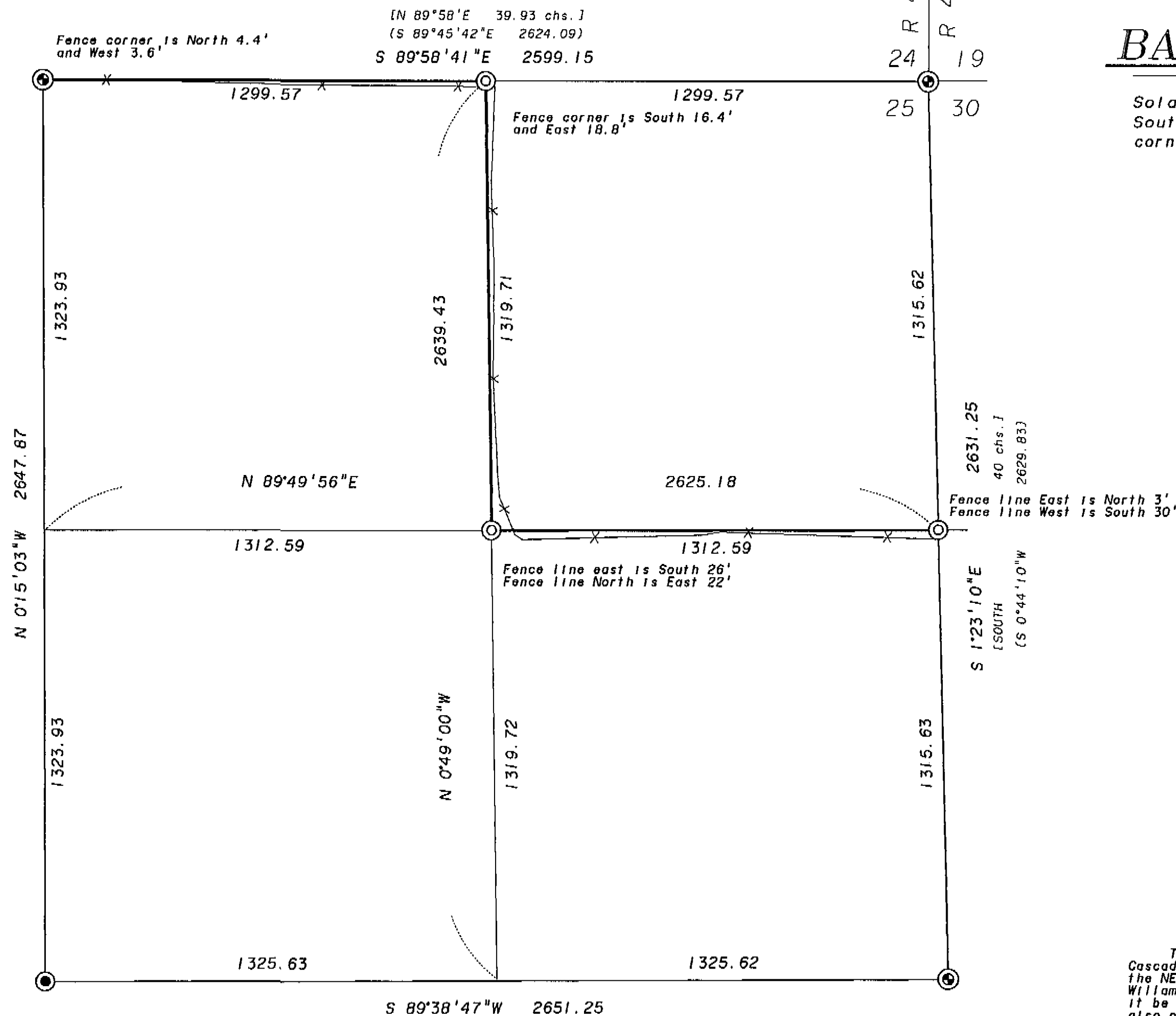


NE 1/4 SECTION 25, T1N R40E



BASIS OF BEARING

Solar observations taken at a point 536 feet South and 1556 feet West of the Northwest corner of Section 26, Township 1 North, Range 40 East of the Willamette Meridian.



LEGEND

- ⊙ Set 2 1/2" x 30" aluminum pipe monument. See monumentation sheets filed separately.
- ⊙ Found Union County Surveyor 2 1/2" aluminum pipe monument. See monumentation sheets.
- ⊙ Found 2 1/2" aluminum pipe monument from survey 023-1997.
- Posted line, placed 6' steel fence post every 200-300' along line.
- x-x- Fence line
- () Record information from survey 95-74.
- [] Record information from GLO survey.
- () Record information from survey 53-75.

NARRATIVE

This survey was ordered by Steve Gurnsey on behalf of Boise Cascade Corporation. Mr. Gurnsey requested that the NE 1/4 of the NE 1/4 of Section 25, Township 1 North, Range 40 East of the Willamette Meridian be surveyed and the South and West lines of it be posted. The North line of the NW 1/4 of the NE 1/4 was also posted. I find that survey 023-1997 has established the exterior lines of the NE 1/4 of Section 25. The NE 1/4 was then subdivided according to the 1973 BLM Manual of Surveying Instruction.

REGISTERED
PROFESSIONAL
LAND SURVEYOR

Jeffery P. Petersen
OREGON
JULY 20, 1993
JEFFERY P. PETERSEN
2625

Renewal Date: Dec. 31, 1998

REFERENCE MATERIAL

GLO Contract no. 120, dated May 27, 1867
Survey 95-74
Survey 53-75
Survey 023-1997
Union County Surveyor Monumentation Records

UNION COUNTY
SURVEYOR
Date Received 8-6-97
Date Filed 8-6-97
By *R. Robinson Deary*
File No. 024-1997

K BAGETT, GRIFFITH & BLACKMAN
2006 Adams Avenue, LaGrande, Oregon
Map of Survey
NE 1/4 OF SECTION 25, TOWNSHIP
1 NORTH, RANGE 40 EAST OF THE
WILLAMETTE MERIDIAN.
UNION COUNTY
SURVEYED FOR BOISE CASCADE CORPORATION
SURVEYED BY JPP 8-97
Scale: 1" = 300' Drawn by: JPP 8-97

SURVEY NO. 024-1997