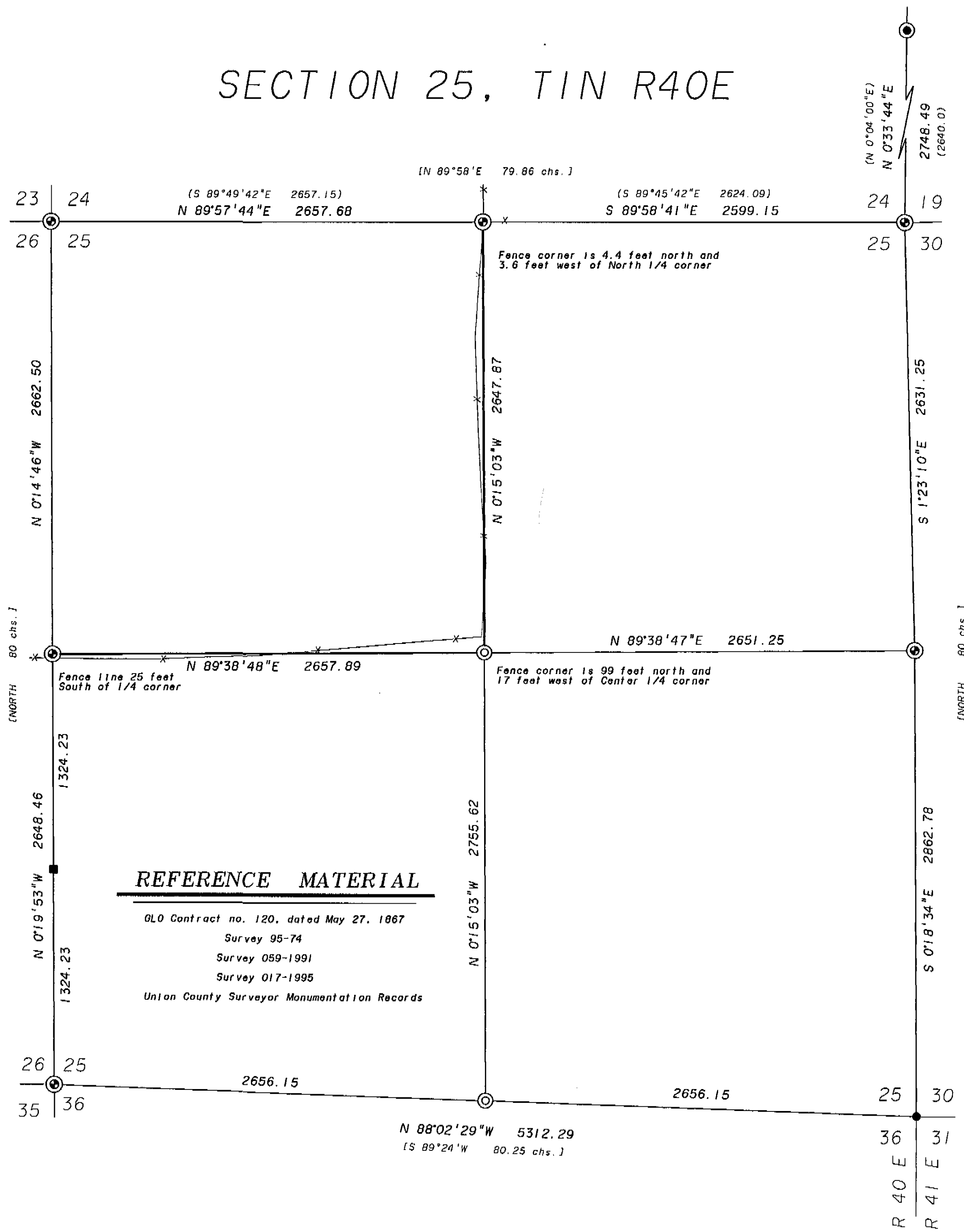


SECTION 25, T1N R40E



BASIS OF BEARING

Solar observations taken at a point 536 feet South and 1556 feet West of the Northwest corner of Section 26, Township 1 North, Range 40 East of the Willamette Meridian.



LEGEND

- ⊙ Set 2 1/2" x 30" aluminum pipe monument. See monumentation sheets filed separately.
- Found 2 1/2" aluminum pipe monument as per monumentation record 857-84R.
- Found 2 1/2" aluminum pipe monument as per survey 017-1995.
- Found 2 1/2" aluminum pipe monument as per survey 059-1991.
- ⊙ Found Union County Surveyor 2 1/2" aluminum pipe monument. See monumentation sheets filed separately.
- () Record information from survey 95-74.
- [] Record information from GLO survey.
- Posted line, placed 6' steel fence post every 200-300' along line.
- x-x- Fence line

NARRATIVE

This survey was ordered by Steve Gurnsey on behalf of Boise Cascade Corporation. Mr. Gurnsey requested that the east and south lines of the Northwest 1/4 of Section 25 be surveyed and posted. I find the East and West 1/4 corners of the section already monumented. The South 1/4 corner is placed proportionally between the found monuments at the Southeast and Southwest section corners. The North 1/4 corner was placed at the found mound of stone. A 50d nail control point was found in the mound indicating that it is probably the position used by Hamilton on survey 95-74. Using the controlling corners on the exterior lines the section was subdivided as per the BLM 1973 Manual of Surveying Instruction.

REFERENCE MATERIAL

GLO Contract no. 120, dated May 27, 1867
 Survey 95-74
 Survey 059-1991
 Survey 017-1995
 Union County Surveyor Monumentation Records

REGISTERED
 PROFESSIONAL
 LAND SURVEYOR
Jeffery P. Petersen
 OREGON
 JULY 20, 1993
JEFFERY P. PETERSEN
 2625
 Renewal Date: Dec. 31, 1998

UNION COUNTY SURVEYOR
 Date Received 8-6-97
 Date Filed 8-6-97
 By *R. Robinson, Deputy*
 File No. 023-1997

BAGETT, GRIFFITH & BLACKMAN
 2006 Adams Avenue, LaGrande, Oregon
 Map of Survey
 Section 25, Township 1 North,
 Range 40 East of the Willamette
 Meridian.
 UNION COUNTY
 SURVEYED FOR Boise Cascade Corporation
 SURVEYED BY JPP 7-97
 Scale: 1" = 500' Drawn by: JPP 8-97

SURVEY NO. 023-1997