

REFERENCE MATERIAL

General Land Office field notes issued under Contract No. 120, Dated May 27, 1867

Map of Survey No. Deed Volume & page

Map of Survey No.	Deed Volume	Page
017-1971	41157	102334
078-1971	41249	103985
080-1972	49627	104459
020-1977	51013	112158
027-1977	69474	116479
055-1979	71353	118114
035-1987	89410	130895
047-1992	89411	139928
	96940	153565

BASIS OF BEARING

Bearings are based on a solar observation taken at the west 1/4 corner of section 27, T 1 N, R 38 E. The observation was made for Survey 040-1982. I used this bearing basis for Survey 035-1994. I used this same basis in this survey.

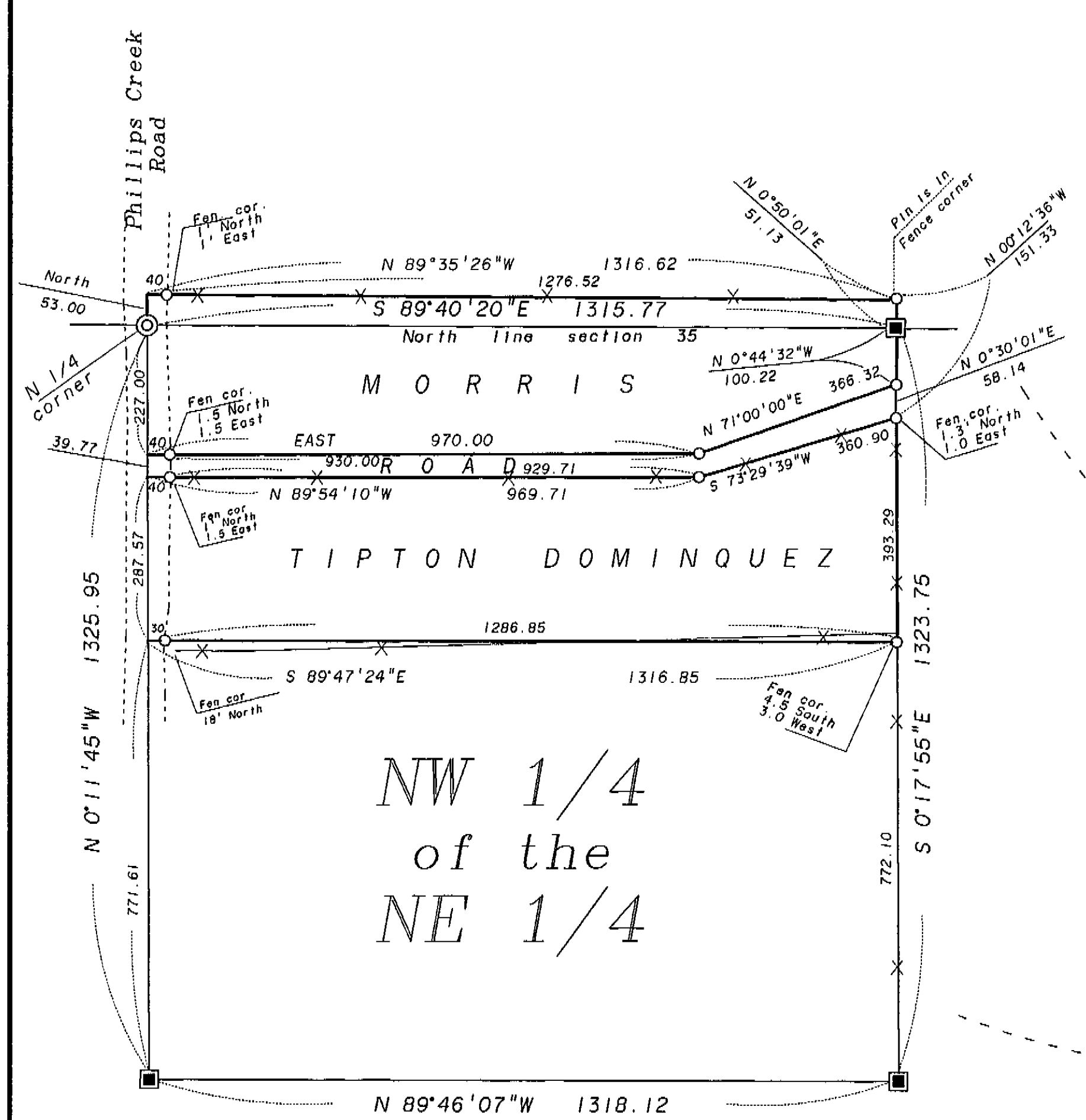
SCALE: 1" = 1000' or as noted

LEGEND

- ✦ Found monument as noted.
- ⊕ Found acceptable evidence of original GLO corner, see monumentation record. Set 2-1/2" X 30" aluminum pipe with cap.
- ⊙ Set at proportionate position or as noted. Set 2-1/2" X 30" aluminum pipe with cap.
- Set 2-1/2" X 30" aluminum pipe with cap. at position determined by survey.
- Set 5/8" X 30" rebar with plastic cap marked "BGB SURVEY MARKER"
- () GLO record bearing and distance.
- X- Existing Fence Line

NOTE

See monumentation records filed separately for cap markings.



SCALE: 1" = 200'

NARRATIVE

This survey was made to mark the positions of the property in the NW 1/4 of the NE 1/4 of section 35. In 1994 I was ordered by the Circuit Court of the State of Oregon to make a survey of the properties in the NW 1/4 of the NE 1/4 of section 35, Township 1 North, Range 38 East of the Willamette Meridian in Union County Oregon for the purposes of settling a boundary dispute in the area. To accomplish this survey I had to subdivide said section 35 to locate the NW 1/4 of the NE 1/4. I presented this survey in the Union County Circuit Court before Judge Rudy Murgu, CASE NO. 93-11-35914. Final judgment was issued December 11, 1996. This map shows the retracement survey to locate and subdivide section 35 and the location of property pins set in the NW 1/4 of the NE 1/4 of section 35 and a portion of section 26.

I retraced the Base Line from the corner to sections 2 and 3, T 1 S, R 38 E, set by Gary Langlitz in 1987, (see Map of Survey 035-1987) to the corner to sections 33 - 34 - 3 and 4, T 1 N, R 39 E, set by Greg Blackman in 1989, see Map of Survey 031-1989. I found the total distance from the corner to sections 2 and 3 to the corner to sections 33 - 34 - 3 and 4 to be 1,075 chains in excess of the GLO record. This amounts to 14.19 feet per mile in excess of the record call. I found the bearing to also be very close to the record. This is very close and indicates an accurate original survey. I found several fence corners which I accepted as best evidence of the position of the original GLO corners. When I refer to fences and fence corners, I am referring to fences which have been in existence for a long time.

In the area of the corner to Township 1 North, Ranges 38 and 39 East, (also the SE corner of section 35), I found a mound of stone approximately 5 feet south of the existing fence. I found a fence corner with a fence running south at the approximate position of the corner of Township 1 South, Ranges 38 and 39 East. The fence in this area appears to be new. However, there is evidence of the old fence having been rebuilt. I found the mound of stone to be 13 feet east of the proportionate position, based on the overall distance between the corner to sections 2 and 3 to the corner to sections 33 - 34 - 3 and 4. I found the fence

corner near corner of Township 1 South, Ranges 38 and 39 East to be within 2 feet of the proportionate position. I found the "ledge of rock" called for in the GLO notes on an old east - west fence line. I found this ledge to be at the GLO record distance from the mound of stone. I accept the mound of stone as the best evidence of the corner to Township 1 North, Ranges 38 and 39 East. I accept the fence corner to be the best evidence of the position to the corner of Township 1 South, Ranges 38 and 39 East.

Near the position of the corner to sections 35 and 36, I found a fence corner with fences running east - west and north. This fence corner is about 3 feet west of the proportionate position of this corner. I accepted the fence corner as the best evidence of the original corner position. I placed the closing corner to sections 1 and 2, T 1 S, R 38 E, in the fence line to the proportionate position of the south 1/4 corner of section 36. I accepted the fence corner as the south quarter corner.

At the south quarter corner of section 35, I found an east - west fence within 2 feet of line between the section corners. There are faint remains of a fence corner 2 feet west of the proportionate position which I accept as the south quarter corner. On the basis of the overall harmony of the base line I placed the SW corner of section 35 at the GLO record bearing and distance from the corner set by Langlitz.

I made an extensive retracement of Township 1 North, Range 38 East in 1992, see Map of Survey 047-1992. In this retracement I found the bearings and distances to be very close to the GLO record also. I used the following to establish the exterior lines of section 35. I found a railroad spike in the center of the county road at the corner to sections 23 - 24 - 25 and 26. This spike was set by Greg Blackman, from references, in 1977, see Map of Survey 020-1977. I used the corner set by Blackman in 1977 at the corner to sections 26 - 27 - 34 and 35, see Map of Survey 039-1977. I also used the corner set by Blackman in 1979 at the corner to sections 25 - 19 - 30 and 36, see Map of Survey 055-1979.

I placed the corner to sections 25 - 26 - 35 and 36 at the double proportionate position. I found the existing fence line, from the east side of the county road at the north 1/4 corner of section 35 to a point about a quarter mile east of the NE corner of section 35, to be from 50 to 55 feet north of the section line. I placed the north, east and west 1/4 corners of section 35 at their proportionate positions. I found all these positions fit very well with the existing fence lines and lines of occupancy, with one exception, the fence line along the east half of the line between sections 26 and 35 as noted above. I then subdivided the section into quarter sections. I then subdivided the NE 1/4 to locate the said NW 1/4 of the NE 1/4. I made the subdivision in the manner prescribed by the Survey laws of the State of Oregon. All of these property pins I set in the NW 1/4 of the NE 1/4 are placed on the basis of the final order by Judge Rudy Murgu. The pin marking the NE corner of the Morris Tract was described in the final order as follows "at a distance of 171.33 feet, to an existing fence corner." This distance is a more or less call and is in error. I placed the property pin in the fence corner which was the intended position. The true bearing and distance are shown on this map.

THE PROPERTY PINS SET IN THE NW 1/4 OF THE NE 1/4 OF SECTION 35 AND IN THE SW 1/4 OF THE SE 1/4 OF SECT 26 ARE SET IN ACCORDANCE WITH THE JUDGMENT QUITTING TITLE, CASE NUMBER 93-11-35914, JUDGE RUDY MURGO PRESIDING.

REGISTERED PROFESSIONAL LAND SURVEYOR
DUANE I. GRIFFITH
644
Renewal Date: Dec. 31, 1996

Duane I. Griffith PLS 644
BAGETT-GRIFFITH & BLACKMAN
2006 Adams Avenue
LaGrande, Oregon 97850
Phone (503) 963-6092

UNION COUNTY SURVEYOR
Date Received 8-28-97
Date Filed 8-28-97
By R. ROBINSON DEARY
File No. 022-1997

BAGETT-GRIFFITH & BLACKMAN
LaGrande, Oregon
Parcels in Section 35
Twp. 1 North, Rng 38 East
of the Willamette Meridian
UNION COUNTY, OREGON
SURVEYED FOR CARROLL BAYLINK DANIEL & VICTOR MORRIS LES TIPTON & DIANA DOMINQUEZ
SURVEYED BY dig July 1997
Scale: As noted Drawn by: Lucy July 1997

MAP OF SURVEY No. 022-1997