



BASIS OF BEARING

Solar observation taken at the Southwest corner of Section 18, Township 4 South, Range 40 East of the Willamette Meridian.

SCALE: 1" = 1000'

LEGEND

- Found 2"x30" aluminum pipe monument with cap set by Survey No. 004-1997
- Set 2"x30" aluminum pipe monument with cap at position determined by survey. See monumentation sheets filed separately.
- ⊙ Set 2"x30" aluminum pipe monument with cap at ancient fence corner. See monumentation sheets filed separately.
- Position of North 1/4 corner of Section 19 as per Surveys 113-78, 19-79, 31-79, 52-80, 79-81 and 23-84.
- [] Record information of GLO contract number 103 dated September 3, 1863.
- Found 2"x30" aluminum pipe monument with cap as per monumentation record 64-88R.

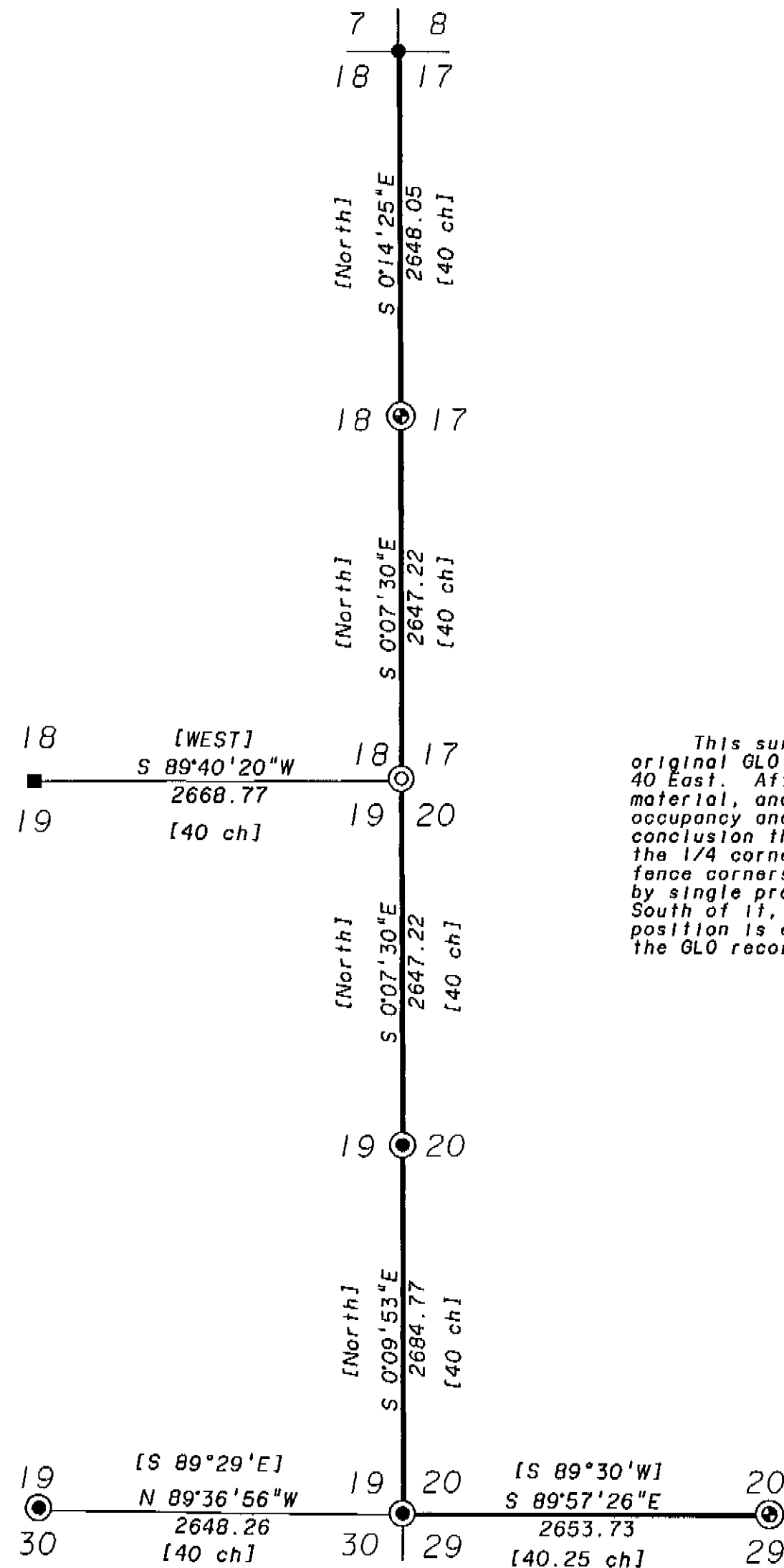
NARRATIVE

This survey was done as part of a comprehensive study of the original GLO corners in this portion of Township 4 South, Range 40 East. After study of the surveys listed in the reference material, and the physical ties of the existing lines of occupancy and the monuments of the surveys, I have come to the conclusion that the best available evidence for the positions of the 1/4 corners set by this survey are in the existing ancient fence corners. The section corner set by this survey was placed by single proportion between the 1/4 corners to the North and South of it, due to lack of monumentation to the east. This position is extremely harmonious with the existing conditions and the GLO record.

REFERENCE MATERIAL

- | | |
|---------------------|------------------|
| Survey No. 004-1997 | Survey No. 31-79 |
| Survey No. 10-60 | Survey No. 66-79 |
| Survey No. 14-71 | Survey No. 27-80 |
| Survey No. 19-73 | Survey No. 52-80 |
| Survey No. 43-76 | Survey No. 79-81 |
| Survey No. 53-78 | Survey No. 7-82 |
| Survey No. 99-78 | Survey No. 12-82 |
| Survey No. 113-78 | Survey No. 12-82 |
| Survey No. 16-79 | Survey No. 23-84 |
| Survey No. 19-79 | Survey No. 23-89 |

Original GLO Contract Number 103
Union County Monumentation Records
Old Book of Surveys, Pages 148 and 315



REGISTERED
PROFESSIONAL
LAND SURVEYOR

Gregory T. Blackman

OREGON
JULY 13, 1975
GREGORY T. BLACKMAN
991

Renewal Date: Dec. 31, 1997

UNION COUNTY
SURVEYOR

Date Received 7-10-97

Date Filed 7-10-97

By J. Patern, Deputy

File No. 017-1997

BAGETT, GRIFFITH & BLACKMAN
2006 Adams Avenue, LaGrande, Oregon
Map of Survey

Study and monumentation of corners between 18 and 17, 19, 20 and 29, Township 4 South, Range 40 East of the Willamette Meridian.

SURVEYED FOR	Union County Surveyor	
SURVEYED BY	GTB	6-97
Scale: 1" = 1000'	Drawn by: GTB	7-97