

BASIS OF BEARING

Solar observation taken at the North quarter corner of Section 15, Township 1 North, Range 40 East of the Willamette Meridian.

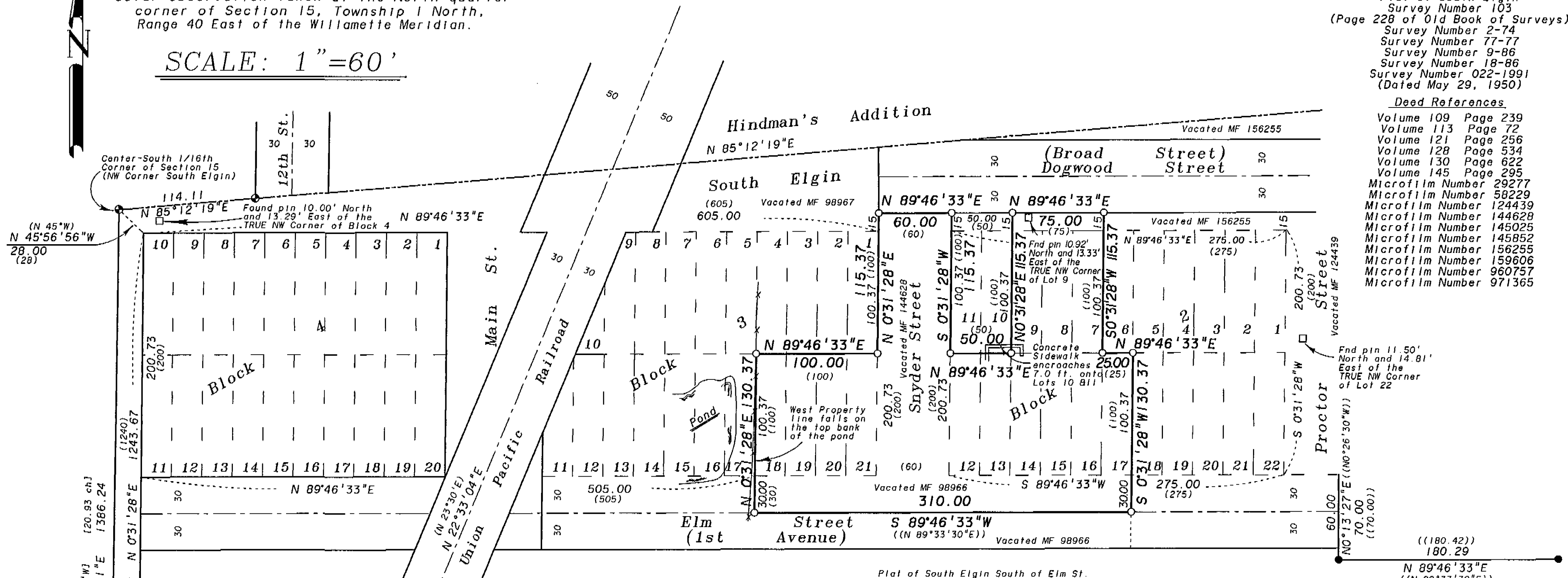
SCALE: 1" = 60'

REFERENCE MATERIAL

Plat of Hindman's Addition
Plat of South Elgin
Survey Number 103
(Page 228 of Old Book of Surveys)
Survey Number 2-74
Survey Number 77-77
Survey Number 9-86
Survey Number 18-86
Survey Number 022-1991
(Dated May 29, 1950)

Deed References

Volume 109 Page 239
Volume 113 Page 72
Volume 121 Page 256
Volume 128 Page 534
Volume 130 Page 622
Volume 145 Page 295
Microfilm Number 29277
Microfilm Number 58229
Microfilm Number 124439
Microfilm Number 144628
Microfilm Number 145025
Microfilm Number 145852
Microfilm Number 156255
Microfilm Number 159606
Microfilm Number 960757
Microfilm Number 971365



NARRATIVE

This survey was done at the request of Chris Reis, owner of the tract surveyed. The tract is described as lots and blocks (and portions of vacated streets) within the area platted as South Elgin. The plat calls the exterior as being the Southwest 1/4 of the Southeast quarter of Section 15. I found the South 1/4 corner monumented with a 1" iron pin as per Survey Number 2-74, which stated finding the original stone alongside. Survey Number 9-86 monumented the Center-South 1/16th corner of Section 15 using the 1" pin. I accept these monuments as marking the West line of the plat of South Elgin. There is some conflict with this line and the line established by Survey Number 18-86 by B.A. Sutton. Mr. Sutton chose to ignore the original evidence at the South 1/4 corner and chose to establish a new 1/4 corner approximately 30 feet Northeastly of the original monument. He arrived at the position by projecting two centerline monuments within Hindman's Addition. I cannot accept this reasoning. The plat of South Elgin makes calls from the 1/4 and 1/16th corners to the corners of Blocks 4 and 20. I reestablish the block corners at the record position called for in the plat. I use a rotation in bearing based on the bearing of the railroad centerline, accepting it as the best available evidence of any monumentation associated with the plat. I then establish the block corners along the West tier of blocks proportionately. The area South of Elm Street was vacated based on the bearings and distances of survey number 022-1991 (dated May 29, 1950). Survey 2-74 was basically a retracement of that survey. I found two of the monuments of survey number 2-74 as shown. The survey calls these monuments 70 feet South of the North line of Elm Street. I locate the South line of Blocks 2, 3 and 4 by driving a line from the Southwest corner of Block 4 as previously established, to a point 70 feet North of the found pins from survey number 2-74. I then place the lots and blocks parallel with this line, at record distance East and West. This disagrees with the monuments set by survey number 18-86 as shown. Mr. Reis was concerned about the construction of the pond bordering his West property line. I find the West line falls on the top bank of the East side of the pond and relatively harmonious with the existing fence. I find no other unusual conditions on this survey.

LEGEND

- ⊙ Found 1" pin in concrete as per survey number 2-74
- Found 5/8" smooth iron pin set by survey number 2-74
- ⊕ Found 5/8" iron pin with plastic cap marked BGA SURVEY MARKER set by survey number 9-86
- Found 5/8" iron pin set by survey number 18-86
- Set 5/8"x30" iron pin with plastic cap marked BGB SURVEY MARKER
- *-*- Existing fence line
- () Record distance of the plat of South Elgin
- [] Record information of survey number 103
- (()) Record information of survey number 2-74

REGISTERED
PROFESSIONAL
LAND SURVEYOR

Rich G. Robinson
OREGON
JULY 17, 1998
RICK G. ROBINSON
2219

Renewal Date: Dec. 31, 1998

UNION COUNTY
SURVEYOR

Date Received 4-4-97

Date Filed 4-4-97

By *Shay T. Black*

File No. 008-PA7

BAGETT, GRIFFITH & BLACKMAN
2006 Adams Avenue, LaGrande, Oregon

Map of Survey
Lots 7-9 and 12-17, Block 2 and
Lots 18-21, Block 3 along with
vacated Snyder Street and portions
of vacated Elm and Dogwood Streets
South Elgin Addition to Elgin
UNION COUNTY, OREGON

SURVEYED FOR Chris Reis

SURVEYED BY R.G.R. 3-97

Scale: 1" = 60' Drawn by: R.G.R. 4-97

SURVEY NUMBER 008-1997