

BASIS OF BEARING

Solar observation taken at the Southeast corner of Section 13, Township 4 South, Range 39 East of the Willamette Meridian.

SCALE: 1" = 500'

LEGEND

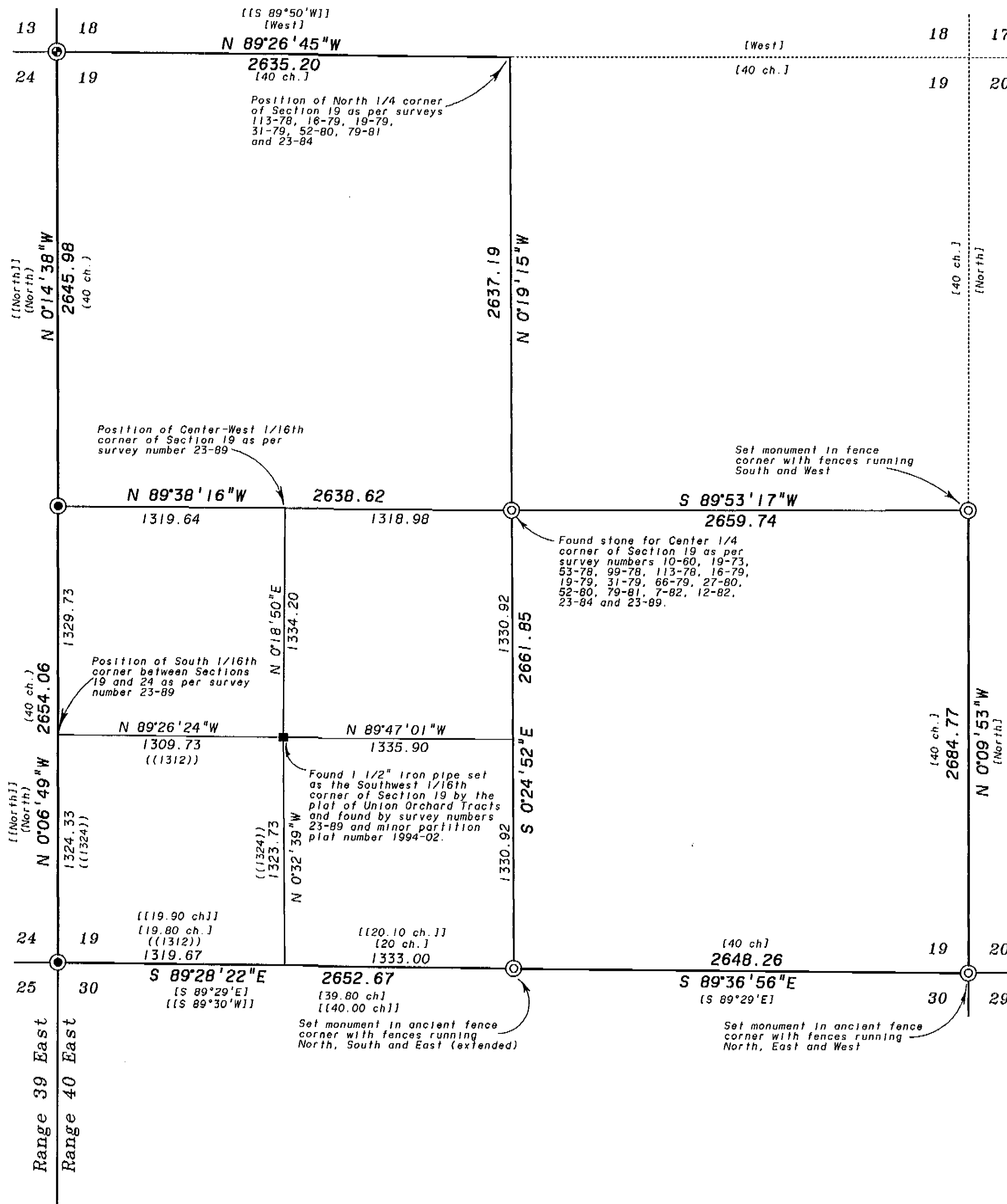
REFERENCE MATERIAL

- Found 1 1/2" iron pipe set by the plat of Union Orchard Tracts
- ⊙ Found 1/2" iron pipe set by survey number 14-71
- ⊙ Found 2 1/2" aluminum monument set by survey number 23-89
- ⊙ Set 2 1/2" x 30" aluminum monument (See monumentation sheets filed separately)
- () Record information of GLO contract number 102 dated July 20, 1863
- [] Record information of GLO contract number 103 dated September 3, 1863
- (()) Record distance of the plat of Union Orchard Tracts
- [[]] Record information of survey in the old book of surveys recorded on page 148

- Original GLO Contract Number 102
- Original GLO Contract Number 103
- Union County Monumentation Records
- Plat of Union Orchard Tracts
- Old Book of Surveys, Page 148
- Survey Number 10-60
- Survey Number 14-71
- Survey Number 19-73
- Survey Number 43-76
- Survey Number 53-78
- Survey Number 99-78
- Survey Number 113-78
- Survey Number 16-79
- Survey Number 19-79
- Survey Number 31-79
- Survey Number 66-79
- Survey Number 27-80
- Survey Number 52-80
- Survey Number 79-81
- Survey Number 7-82
- Survey Number 12-82
- Survey Number 23-84
- Survey Number 23-89
- Minor Partition Plat Number 1994-02

NARRATIVE

This survey was done as a part of a comprehensive study of the original GLO corners in this portion of Township 4 South, Range 40 East. There will be additional study and monumentation in the area North and East of this survey in the future. After study of the surveys listed in the reference material, and the physical ties of the existing lines of occupation and the monuments of the surveys listed, I have come to the conclusion that the best available evidence of the position of the East and South 1/4 corners and the Southeast corner of Section 19 is in the existing fence corners. They are all reasonably harmonious with the record calls of the original GLO Survey and the subsequent private surveys and plats. A further retracing of the interior fences now constructed in the location of the survey recorded in the old book of surveys on page 148 proves the harmony with the positions of the fences. While no actual monuments from that survey could be identified, the record positions fell in the existing fences. This further supports the theory that the fences were constructed at the location of the original corner monumentation. For information regarding the accessories taken to reference the new monuments, see the monumentation records filed separately.



UNION COUNTY SURVEYOR
 Date Received 1-24-97
 Date Filed 1-29-97
 By R. Robinson, Deputy
 File No. 004-1997

REGISTERED
PROFESSIONAL LAND SURVEYOR
Gregory T. Blackman
 OREGON
 JULY 13, 1973
GREGORY T. BLACKMAN
 991
 Renewal Date: Dec. 31, 1997

BAGETT, GRIFFITH & BLACKMAN
 2006 Adams Avenue, LaGrande, Oregon
 Map of Survey
 Study and monumentation of corners within Section 19, Township 4 South, Range 40 East of the Willamette Meridian
 UNION COUNTY, OREGON

SURVEYED FOR	Union County Surveyor	
SURVEYED BY	G. T. B.	1-97
Scale: 1" = 500'	Drawn by: R. G. R.	1-97

SURVEY NUMBER 004-1997