

RECORD OF SURVEY

BEING A RE-CONSTRUCTION FROM FIELD NOTES OF A SURVEY DONE IN 1987 BY B. A. SUTTON SURVEY CO. OF SECTIONS 13 AND 24 TOWNSHIP 2 NORTH, RANGE 39 EAST, WILLAMETTE MERIDIAN, UNION COUNTY, OREGON.

LEGEND

- 5/8"X30" IRON ROD SET WITH 1-1/2" ALUMINUM CAP MARKED AS SHOWN
- 2-1/2" ALUMINUM CAPPED ALUMINUM PIPE SET MARKED AS SHOWN
- PROPERTY LINE POSTED WITH STEEL FENCE POSTS
- ##### RAILROAD TRACKS
- B&S BLAZED AND SCRIBED
- GLO GENERAL LAND OFFICE (ORIG. SURVEY)
- CH CHAINS (1 CHAIN = 66')
- () RECORD DATA

CORNER NOTES

- 'A'**

T2N R39E R40E
1/4 S12 S7
RLS1848 1987

WITNESSED BY:
9" PP S70°30'E 17.7'
B&S 1/4S7BT
12" PP S31°15'W 15.8'
B&S 1/4S12BT
FND. STUMP HOLE
N70°W 14 Lkq (ORIG. BT)

'B'

T2N R39E
1/4 S12 S7
RLS1848 1987

WITNESSED BY:
16" PP N38°E 40.3'
BT VIS (ORIG. BT)
12" PP S57°30'E 35.8'
B&S 1/4S13BT
FND. STUMP HOLE
S60°W 8.6'(ORIG. BT)

'C'

T2N R39E R40E
S12 S7
S13 S18
RLS1848 1987

WITNESSED BY:
13" PP N43°E 38.3'
B&S(T2NR40ES7BT)
9" PP S17°30'E 4.4'
B&S(T2NR40ES18BT)
14" PP S44°45'W 77.0'
B&S(T2NR39ES13BT)
11" PP N80°30'W 44.0'
B&S(T2NR39ES12BT)

'D'

T2N R39E
1/4 S14 S13
RLS1848 1987

WITNESSED BY:
9" PP N59°E 52.9'
B&S 1/4S13BT
12" PP N8°45'W 15.8'
B&S 1/4S14BT
FND. STUMP HOLE W/ROTTED
REMAINS OF PORTION
OF BLAZE OVERGROWTH
N44°E 41LKS(ORIG. BT)
FND. STUMP HOLE W/D&D
PINE OPEN BLAZE
PARTIALLY BURNED
FAINT SCRIBING "S"
W/ AXE MARKS VIS.
N44°W 54LKS(ORIG. BT)

'E'

E1/16
C S13
RLS1848 1987

WITNESSED BY:
16" PP N38°15'E 30.6'
B&S CE1/16S13BT
13" DF N44°30'W 39.1'
B&S CE1/16S13BT

'F'

WC T2N R39E R40E
1/4 S13 S18
42.88' N.
RLS1848 1987

FOUND MOUND OF STONES ORIGINAL
WITNESS CORNER ON
BANK OF GRANDE RHOND
RIVER WITNESSED BY:
AN 18" DOUG FIR BEARS
N43°20'E 102.0'
B&S(T2NR40EWC18BT)
1-1/2" ALUMINUM CAP
WEDGED IN CREVAUSE
MARKED WC S18 RM
RLS 1848 1996
N57°10'E, 36.38'
1-1/2" ALUMINUM CAP
ON A 5/8"X30" IR
MARKED WC S13 RM
RLS 1848 1996
N9°03'W, 11.30'(RISING 4")
A 5" DIAMETER 4" DEEP
SMOOTH CRATER IN
BOULDER BEARS
N80°W, 13.1'

'G'

SW1/16 S13
RLS1848 1987

WITNESSED BY:
8" PP N46°E 16.4'
B&S SW1/16S13BT
14" DF S2°15'E 10.3'
B&S SW1/16S13BT

'H'

C S1/16 S13
RLS1848 1987

WITNESSED BY:
13" PP N82°E 23.3'
B&S CS1/16S13BT
11" PP S12°15'E 38.2'
B&S CS1/16S13BT

'I'

SE1/16 S13
RLS1848 1987

WITNESSED BY:
9" PP N18°30'E 19.4'
B&S SE1/16S13BT
10" PP S62°E 31.1'
B&S SE1/16S13BT

'J'

T2N R39E
S14 S13
S23 S24
RLS1848 1987

WITNESSED BY:
FND. 24" PINE STUMP(BT VIS)
S20°W 16LKS (ORIG. BT)
13" PP N27°E 7.8'
B&S(T2NR39ES13BT)
12" PP S48°30'E 16.6'
B&S(T2NR39ES24BT)
6" WL S49°W 34.6'
B&S(T2NR39ES23BT)
13" PP N33°W 5.1'
B&S(T2NR39ES14BT)

'K'

W1/16 S13
S24
RLS1848 1987

WITNESSED BY:
4" PP N23°15'E 16.1'
B&S W1/16S13BT
5" PP S46°W 46.7'
B&S W1/16S24BT

'L'

T2N R39E
1/4 S13
S24
RLS1848 1987

WITNESSED BY:
15" PP N31°15'E 151.6'
B&S 1/4S13BT
22" PP S67°30'W 91.9'
B&S 1/4S24BT

'M'

T2N R39E
S13 S18
S24 S19
RLS1848 1987

WITNESSED BY:
FND. 40" FIR STUMP
S49°E 45LKS (BT VIS)
10" DF N45°15'E 62.3'
B&S(T2NR40ES18BT)
10" DF S27°45'E 23.1'
B&S(T2NR40ES19BT)
11" DF S44°45'W 17.4'
B&S(T2NR39ES24BT)
9" DF N39°30'W 28.4'
B&S(T2NR39ES13BT)

'N'

T2N R39E
1/4 S23 S24
RLS1848 1987

WITNESSED BY:
13" DF S51°E 68.5'
B&S 1/4S24BT
12" DF S25°15'W 28.1'
B&S 1/4S23BT

'O'

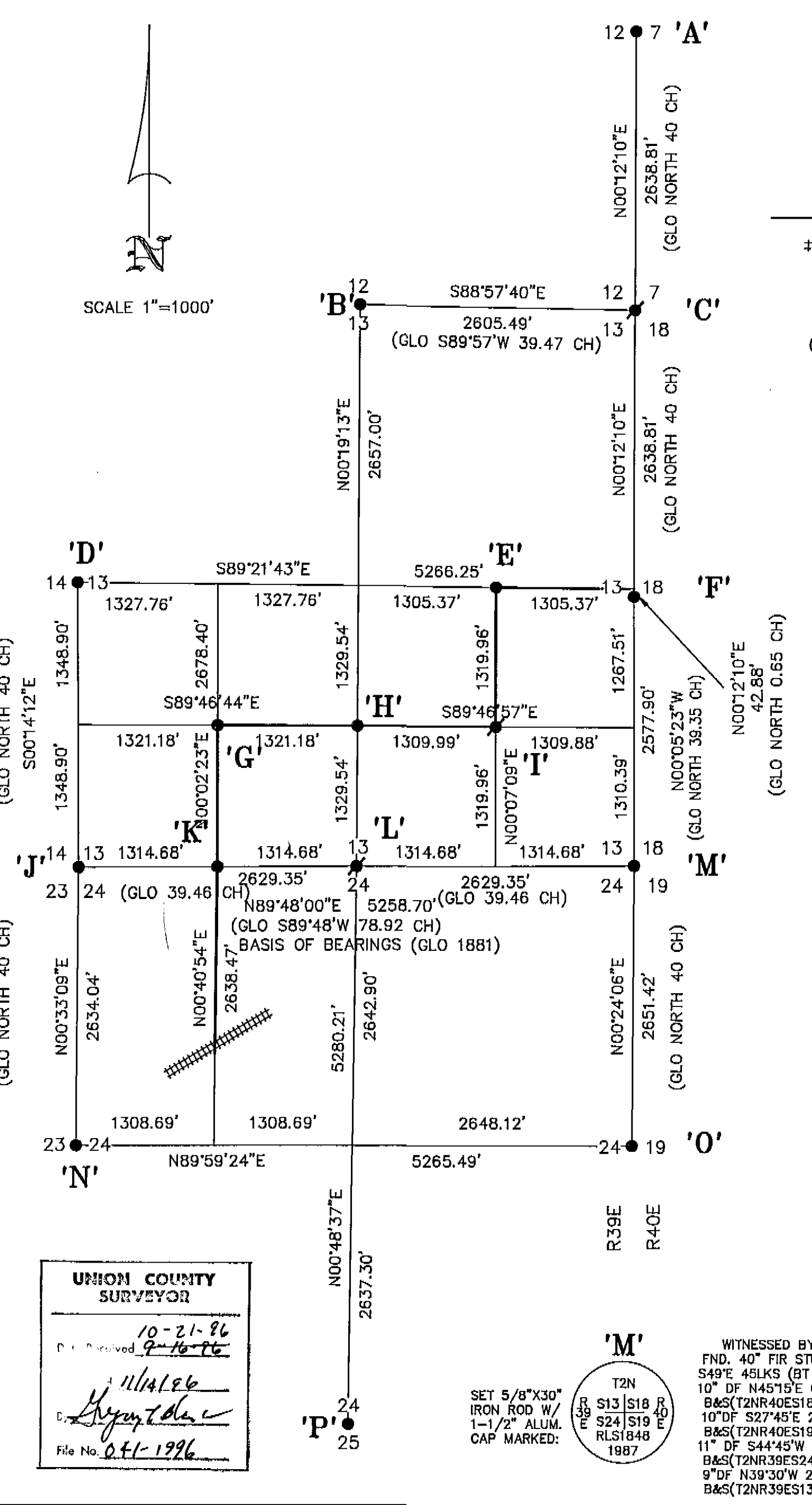
T2N R39E R40E
1/4 S24 S19
RLS1848 1987

WITNESSED BY:
A 20" JUNIPER BEARS
N8°00'W, 299.6'
B&S(T2NR39E1/4S24BT)
A 1-1/2" ALUMINUM CAP
ON A 5/8"X30" IR
MARKED: 1/4 S24 RM
RLS 1848 1996
S86°43'W, 30.00'(RISING 2")
A 1-1/2" ALUMINUM CAP
ON A 5/8"X30" IR
MARKED: 1/4 S19 RM
RLS 1848 1996
N86°43'E, 30.00'(RISING 2")
1-1/2" ALUMINUM CAP
ON A 5/8"X30" IR
MARKED: 1/4 S13 RM
RLS 1848 1996
S45°00'E, 42.20'(DOWN 4")

'P'

T2N R39E
1/4 S24
S25
RLS1848 1987

WITNESSED BY:
12" PP N73°45'W 52.8'
B&S 1/4S24BT
9" APPLE S38°30'W 19.9'
B&S 1/4S25BT



SURVEYOR'S NARRATIVE

THIS MAP IS A REPRESENTATION OF THE SURVEY I PERFORMED IN 1987 OF THE PROPERTY SHOWN AND IS RECONSTRUCTED FROM MY FIELD NOTES. THE PURPOSE OF THIS SURVEY IS TO SURVEY AND LAY OUT THE PROPERTY LINES SHOWN IN SECTIONS 13 AND 24 FROM THE RAILROAD TRACKS ON THE NORTH-SOUTH CENTERLINE OF THE NORTHWEST 1/4 OF SECTION 24 THROUGH CORNERS K, G, H, I, E AND F AS SHOWN ON THE ADJOINING MAP. I FOUND THE CORNER EVIDENCE SHOWN ON THE ADJOINING MAP AND BY CLOSED LOOP TRAVERSE TIED OR SET ALL CORNERS SHOWN. CORNER 'C' IS ESTABLISHED BY SINGLE PROPORTIONATE MEASUREMENT FROM THE WITNESS CORNER AT CORNER 'F' TO THE ORIGINAL CORNER FOUND AT 'A'. THE 1/4 CORNER COMMON TO SECTIONS 13 AND 24 (CORNER 'L') IS SET BY SINGLE PROPORTIONATE MEASUREMENT BETWEEN CORNERS ESTABLISHED FROM ORIGINAL EVIDENCE AT 'J' AND 'M'. THE SECTION BREAKDOWN WAS PERFORMED USING THE 1973 BLM MANUAL PROCEDURES. I POSTED THE PROPERTY LINE WITH STEEL FENCE POSTS AT +/- 200 FOOT INTERVALS AT THE CLIENTS REQUEST. BASIS OF BEARINGS: THE SECTION LINE BETWEEN SECTIONS 13 AND 24 PER THE GLO SURVEY DATED 03/23/1881. REFERENCE SURVEYS: GLO SURVEYS; T. DAVENPORT, 1/12/1864; R. MOORE, 03/23/1881; R. MOORE, 3/21/1882; R. MOORE 4/11/1883. CREW: B. SUTTON, J. SUTTON. EQUIPMENT: TOPCON GTS-1, HP-41CX

DRAWN: BAS
CHECKED: BAS
SCALE 1"=1000'
JOB NO. 87001
COMPUTER FILE
NO. 87001A
REVISION:

DATE: 9/05/1996
PAGE 1
OF 1

PROJECT TITLE: BOUNDARY SURVEY
PROJECT FOR: CLYDE HARDY ESTATE

REGISTERED
PROFESSIONAL
LAND SURVEYOR
BERNARD A. SUTTON
JULY 13, 1979
OREGON
1848
RENEWAL DATE 6/30/98

AGAPE LAND SURVEY CO.
14449 S. E. STARK STREET
PORTLAND - OREGON 97233
PHONE: (503) 254-8779
FAX: (503) 251-2283

UNION COUNTY
SURVEYOR
10-21-86
11/14/86
File No. 041-1996

SURVEY NO. 041-1996