

IN SECTIONS 16 & 17, T.3 S., R.40 E., W.M.
 COVE NCL-CHURCH STREET
 CONTROL TRAVERSE SURVEY

REGISTERED
 PROFESSIONAL
 LAND SURVEYOR

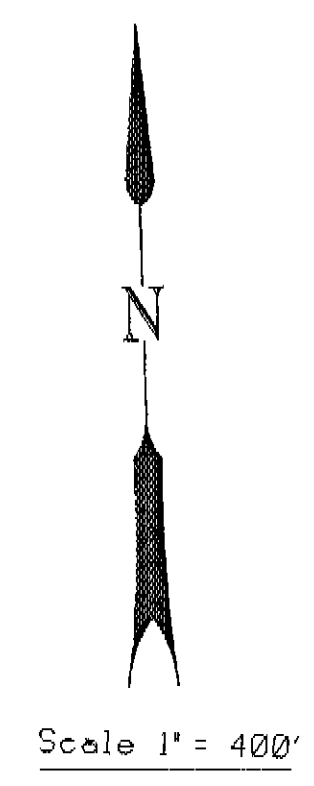
J. David Brinton
 OREGON
 DECEMBER 2, 1983
 J. DAVID BRINTON
 2085

Expires 12/31/97

Key Id. No. 05608
 Date of Survey: March 31, 1992

3012 Island Ave.
 La Grande, Oregon 97850

- LEGEND
- △ TRAVERSE POINT
 - FOUND MONUMENT



NARRATIVE OF SURVEY

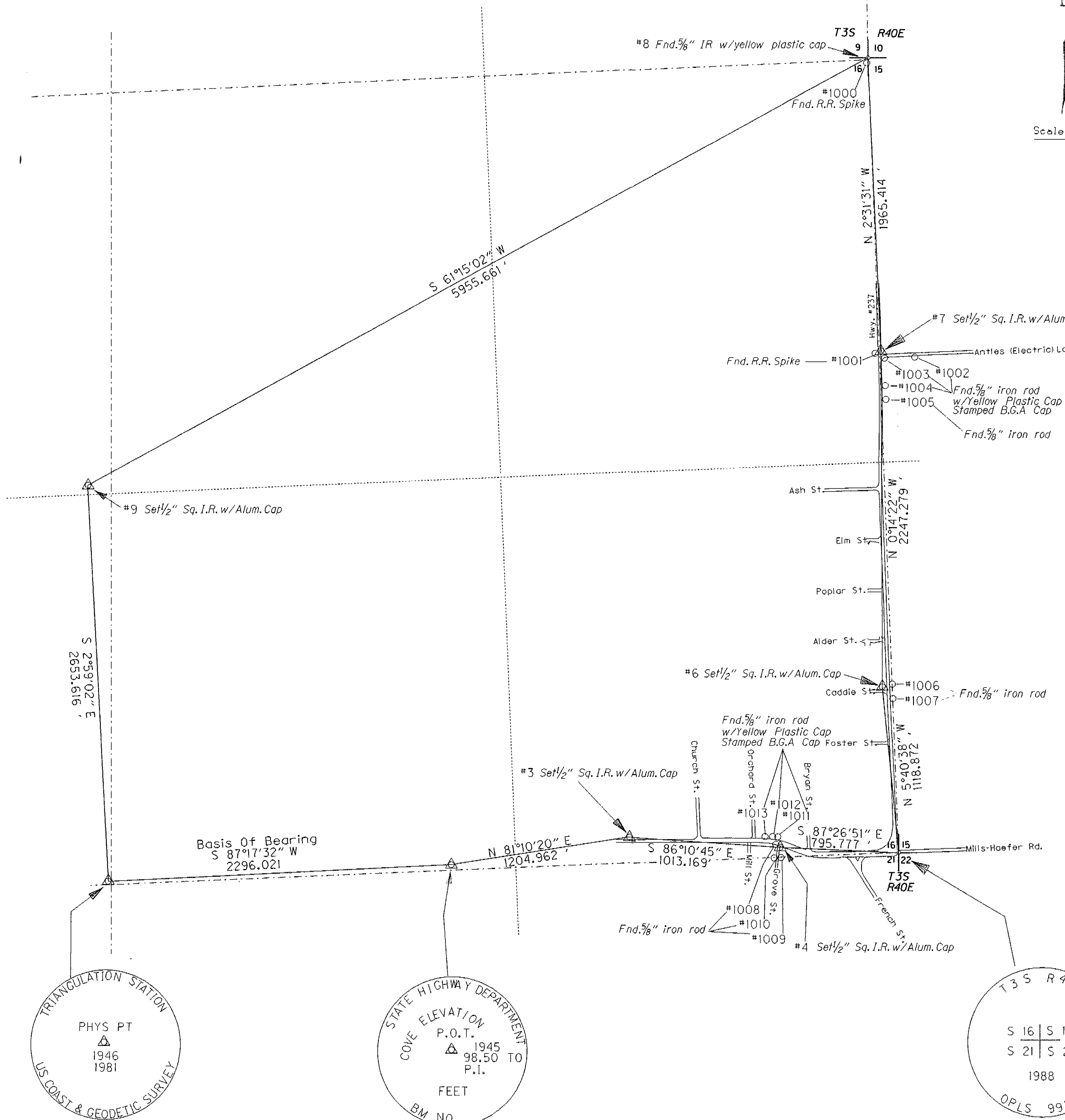
The purpose of this survey is to establish horizontal control for the N. City Limits-Church St. project located on Highway #237 in Cove, Oregon, T 3 S, R 40 E, Sec. 16, WM. Project limits begin at the North City Limits end and at Church Street.

The Basis of Bearings was determined by G.P.S. Stations located on the project ('COVE' & 'PHYS PT'). The traverse began at 'COVE' G.P.S. Station backsighting 'PHYS PT' and continuing through seven points and closing at 'PHYS PT' foresighting 'COVE'. The angular misclosure 00'00"00.2" and a linear misclosure of 0.19'.

The coordinates for these positions were calculated by using Oregon North Base State Plane Coordinates and converting to Local Datum. The L.D.P. factor of 0.99976180 was used to obtain the Local Datum (1983/91) coordinates. The traverse was adjusted by the Compass Rule Method and coordinates shown have been adjusted.

R/W Monumentation and property pin locations were double tied from traverse control points. A Wild T-2000 with a DIS EDM and GRE-3 Data Collector were used to collect the Horizontal Control and Mapping Data.

Existing monumentation located by survey records and references are noted in the coordinate tables. This document corrects and supersedes Survey Number 030-1992 filed in the office of the Union County Surveyor.



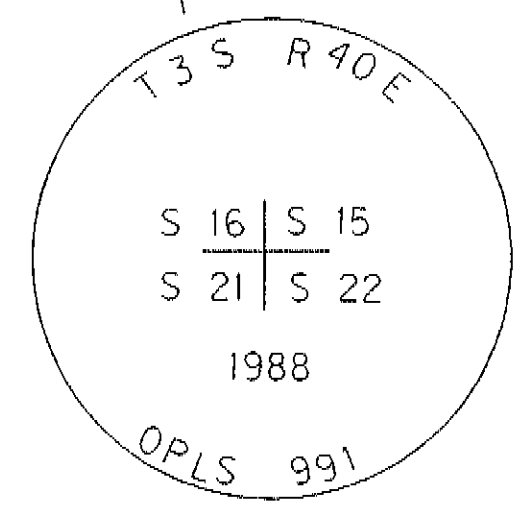
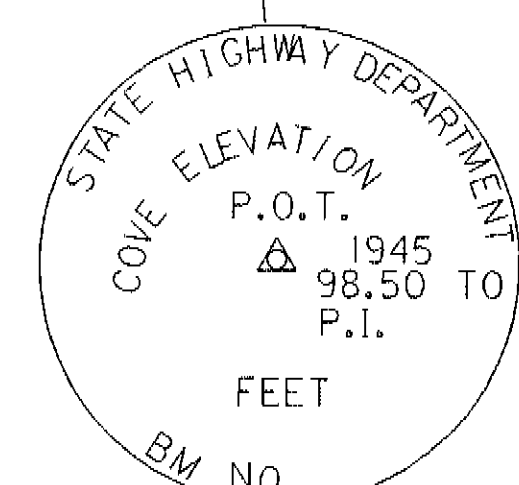
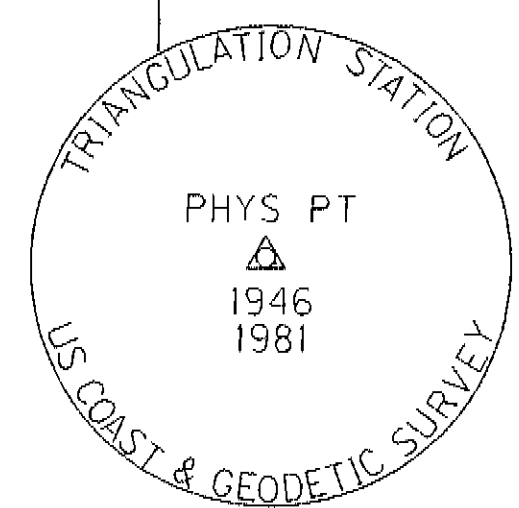
PT. #	NORTHING	EASTING
1	605761.763	8891403.972
2	605870.233	8893697.429
3	606055.150	8894888.117
4	605987.634	8895899.035
5	605952.194	8896694.021
6	607065.579	8896583.338
7	609312.838	8896573.949
8	611276.342	8896487.350
9	608411.781	8891265.838
1	605761.763	8891403.972

PT. #	NORTHING	EASTING	BEARING	DIST.
8	611276.342	8896487.350	S14°51'11"W	36.64
1000	611240.923	8896477.995		
1001	609301.633	8896569.915	S19°46'49"W	11.91
7	609312.838	8896573.949	S79°58'22"E	230.79
1002	609272.656	8896801.219		
1003	609264.233	8896595.450	S23°51'51"E	53.15
7	609312.838	8896573.949	S7°02'19"E	233.48
1004	609081.120	8896602.557		
7	609312.838	8896573.949	S5°40'03"E	326.05
1005	608988.373	8896606.146		

PT. #	NORTHING	EASTING	BEARING	DIST.
1006	607081.265	8896650.162	N76°47'33"E	68.64
6	607065.579	8896583.338	S41°38'46"E	105.98
1007	606986.383	8896653.768		
1008	605993.312	8895893.229	N45°39'04"W	8.12
4	605987.634	8895899.035	S2°57'19"W	68.43
1009	605919.296	8895895.507		
1010	605918.265	8895865.423	S25°51'03"W	77.08
4	605987.634	8895899.035	N20°04'45"W	75.18
1011	606058.245	8895873.225		

PT. #	NORTHING	EASTING	BEARING	DIST.
1012	606059.466	8895853.019	N32°38'41"W	85.31
4	605987.634	8895899.035	N54°23'14"W	124.75
1013	606060.280	8895797.615		

PT. TO PT.	FILED SURVEY NO.	RECORD DIST.	MEAS. DIST.
1002-1003	90-008	206.00	205.94
1003-1004	90-008	183.16	183.25
1004-1005	90-008	100.00	92.82
1008-1010	49-84	80.87	80.03
1009-1010	49-84	30.00	30.10
1011-1012	046-1991	20.23 (L.C.)	20.24
1012-1013	046-1991	55.38	55.41



#1 Found 3 1/2" Brass Disc
 PHYS PT Az. Mark

#2 Found 3 1/2" Brass Disc
 COVE, G.P.S. STATION

#5 Found 2 1/2" Brass Disc
 At Section Corner

UNION COUNTY
 RECORDS
 Date Received: 8-22-96
 Date Filed: 8-27-96
 R. Robinson, County
 File No. 030-1992