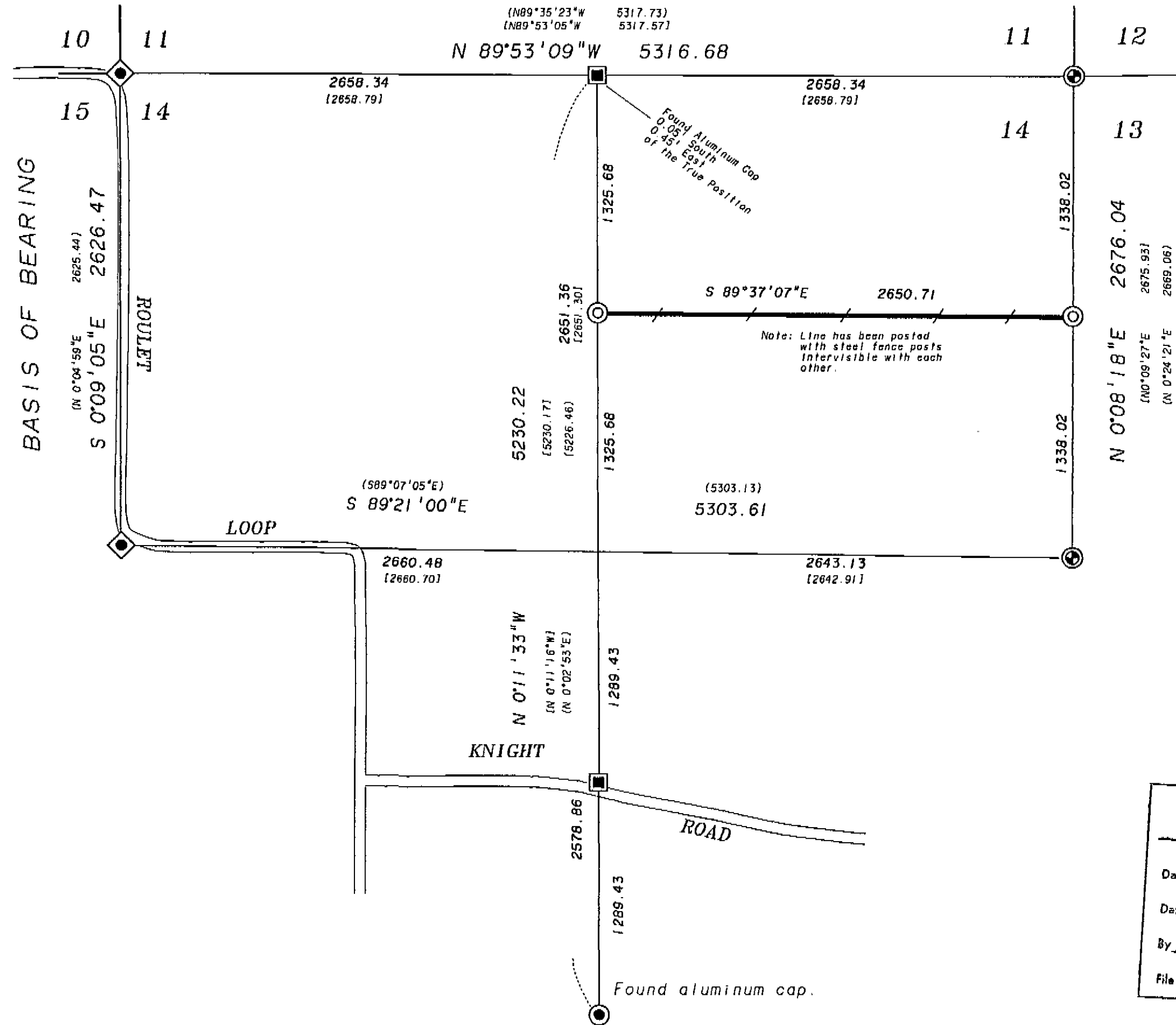


T 1 N R 40 E



BASIS of BEARING

Survey Number 037-1993. Recorded bearing from the NW section corner to the West 1/4 corner of section 14.



SCALE: 1"=600'

LEGEND

- ⊙ Found 2-1/2" aluminum cap, Survey 021-1984
- ⊙ Found 2-1/2" aluminum cap Survey 049-1992.
- ◇ Found 2-1/2 X 30" aluminum monument set by Survey 037-1993, based on Survey 095-1974.
- Found 2-1/2" aluminum cap monument Survey 037-1993
- ⊙ Set 2-1/2 X 30" aluminum monument (See monumentation records filed separately)
- ( ) Record bearing and distance, Survey number 095-1974.
- [ ] Record bearing and distance, Survey number 037-1993.
- / — Set steel fence posts intervisibile

UNION COUNTY SURVEYOR  
 Date Received 8-27-96  
 Date Filed 8-27-96  
 By R. JOHNSON, Deput  
 File No. 033-1996

NARRATIVE

This survey was ordered by Estill Arrand for the purpose of monumenting and posting the South line of the North Half of the NE 1/4 of Section 14. I base my survey on Survey Number 037-1993. I find that the North 1/4 corner of Section 14 is East 0.45' from the true position. This is due to the fact that the overall distance between the section corners is 0.89 feet short of the call on Survey 037-1993. I tied the Northeast and Northwest section corners, the East and West 1/4 corners and the South 1/4 corner in order to break the section. I then established the North 1/16 corner between the Sections 13 and 14 midway between the East 1/4 and the Northeast section corner of 14. I then set the Center North 1/16 midway between the Center 1/4 corner and the true North 1/4 corner of 14. I then set fence posts intervisibile on the South line of the North Half of the NE 1/4 of section 14. The fence posts are within 1.0 feet of the true line. I find no other problems with this survey.

REFERENCE MATERIAL

Union County Monumentation Records

MAPS OF SURVEY

- 037-1993
- 095-1974 (95-74)
- 021-1984 (21-84)
- 049-1992

REGISTERED PROFESSIONAL LAND SURVEYOR  
  
 OREGON  
 JULY 13, 1973  
 GREGORY T. BLACKMAN  
 991  
 Renewal Date: Dec. 31, 1997

BAGETT-GRIFFITH & BLACKMAN LaGrande, Oregon Map of Survey The South line of the North Half of the NE 1/4 of Section 14 Township 1 North, Range 40 East of the Willamette Meridian UNION COUNTY, OREGON		
SURVEYED FOR	Estill Arrand	
SURVEYED BY	GTB	7/96
Scale: 1" = 600'	Drawn by: GTB	8/96

SURVEY NO. 033-1996