



BASIS OF BEARING

Forward bearing as published by the U.S.C. and G.S. from Δ COLLEGE to Δ VALLEY Dated 1946.

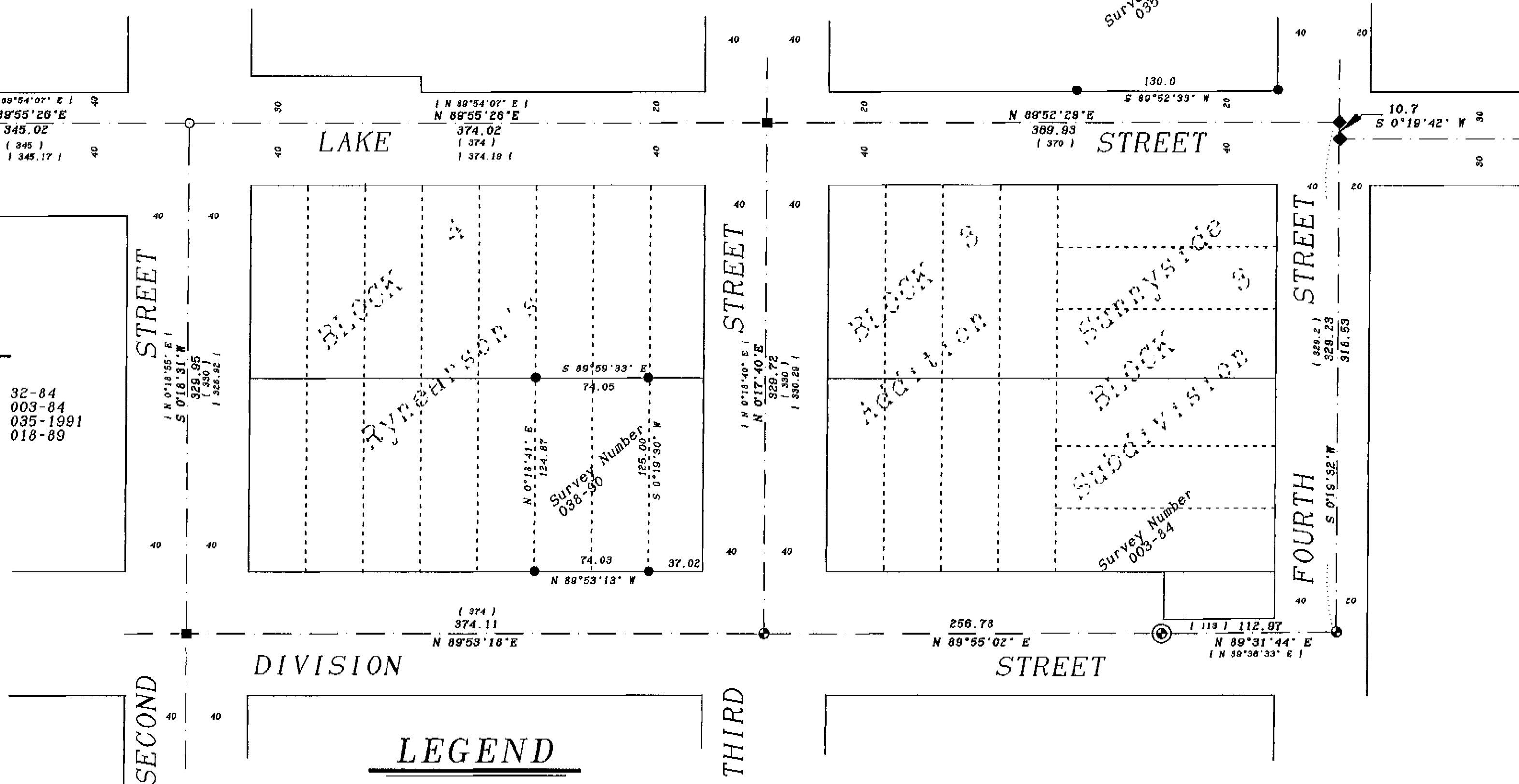
SCALE: 1"=60'

REFERENCE MATERIAL

Survey Number 106-78	Survey Number 32-84
Survey Number 11-88	Survey Number 003-84
Survey Number 038-90	Survey Number 035-1991
Survey Number 024-1996	Survey Number 018-89

NARRATIVE

This survey was ordered by the CITY OF LAGRANDE in conjunction with a block grant to install sewer and water service to this area of the city. We started the survey prior to all of the construction by finding the remaining monuments set by A. H. McLain that were originally set in 1922, now filed as Survey Number 018-89. We also recovered the remaining monuments on centerline that were set by recorded surveys on file with the County Surveyor. We referenced the monuments and tied them into a closed loop traverse so that we could replace the monuments after construction. We replaced the monuments in the original positions, and then computed positions for the remaining intersections that had no original monuments, using single proportionate measurement between known monuments. I find no unusual conditions with this survey.



LEGEND

- ◆ Found 2" brass cap copper clad pin Marked BAGETT-GRIFFITH & BLACKMAN PLS. set by survey 024-1996
- Found 5/8 rebar with plastic cap marked BGA SURVEY MARKER. set by survey as noted.
- Set 5/8" x 30" copper clad pin with brass cap stamped BAGETT, GRIFFITH & BLACKMAN, PLS. set this survey.
- ⊙ Found brass plaque set in concrete cylinder, set in water valve box, set by survey 106-78
- Found 5/8 rebar with plastic cap marked "BGA SURVEY MARKER" set by survey 003-84. Replaced found monument with 5/8 x 30" copper clad pin with 2" brass cap marked BAGETT-GRIFFITH & BLACKMAN PLS.
- Centerline of road
- Found 3/4 pipe set by Survey Number 018-89, replaced pipe with 5/8 copper clad pin with 2" brass cap marked BAGETT-GRIFFITH & BLACKMAN, PLS. for corner.
- () Record information from Survey Number 018-89
- | | Record information from Survey Number 038-90
- | | Record information from Survey Number 035-91
- ⊙ Found 2" aluminum pipe with aluminum cap as per Union County monumentation records.

REGISTERED
PROFESSIONAL
LAND SURVEYOR

Gregory T. Blackman

OREGON
JULY 13, 1973
GREGORY T. BLACKMAN
991

Renewal Date: Dec. 31, 1997

BAGETT, GRIFFITH & BLACKMAN
2006 Adams Avenue, LaGrande, Oregon

Map of Survey
INTERSECTION MONUMENTATION FOR
SECOND, THIRD, AND FOURTH AT LAKE
AND DIVISION STREETS, BLOCK 3 AND 4
RYNEARSON ADDITION, AND BLOCKS 2 AND
3, SUNNYSIDE ADDITION
UNION COUNTY, OREGON

SURVEYED FOR	CITY OF LAGRANDE	
SURVEYED BY	GTB	7-29-96
Scale: 1" = 60 Ft.	Drawn by: GTB	7-29-96

UNION COUNTY
SURVEYOR

Date Received *8/1/96*

Date Filed *8-27-96*

By *J. Paterson, Deputy*

File No. *032-1996*

Survey Number 032-1996