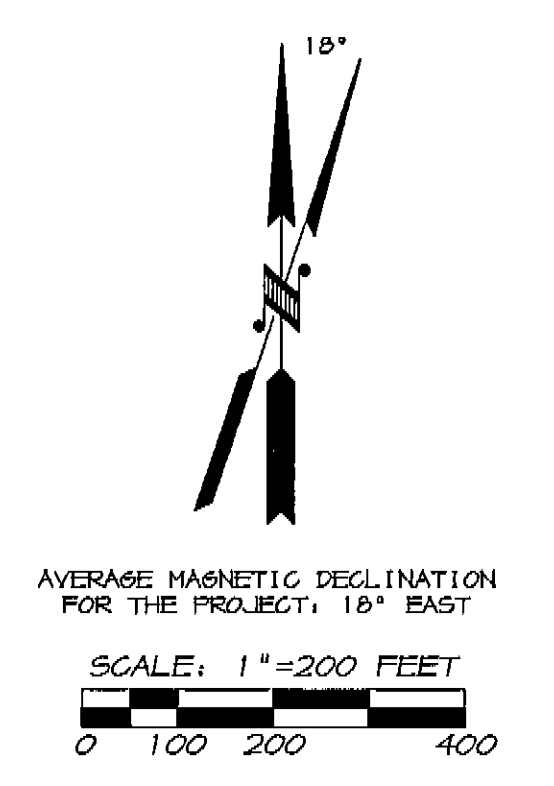


RECORD OF SURVEY PLAT
RESERVOIR CADASTRAL SURVEY
CONTRACT NO. 53-04M3-3-0102
N.E. 1/4 N.E. 1/4 S.W. 1/4,
SECTION 26, T 2 S., R 36 E., W.M.
UNION COUNTY, OREGON



BASIS OF BEARING

OREGON NORTH ZONE GRID BEARINGS FROM THE GPS CONTROL SURVEY, ROTATED TO GEODETIC BEARINGS AT THE MONUMENTED SECTION CORNER COMMON TO SECTIONS 35 & 36, T. 2 S., R. 36 E., AND SECTIONS 1 & 2, T. 3 S., R. 36 E., N.M. LATITUDE 45° 20' 21.56241" N. LONGITUDE 118° 15' 44.55312" W. OREGON NORTH ZONE COORDINATES (INTERNATIONAL FEET)
N 618370.434
E 6777561.713
THETA 1° 35' 13"
AS DETERMINED BY G.P.S. OBSERVATION GRID TO GROUND DISTANCE CONVERSIONS WERE BASED ON AN AVERAGE PROJECT ELEVATION OF 3400 FEET.

NOTE: DISTANCES SHOWN ARE GROUND DISTANCES. TO CONVERT DISTANCES SHOWN TO GRID DISTANCES USE A COMBINED (GRID AND ELEVATION) SCALE FACTOR OF 0.9994196658.

HISTORY OF SURVEYS

T 2 S., R 36 E., N.M. WAS ORIGINALLY SURVEYED AND SUBDIVIDED BY JOHN A. HURLBERT UNDER CONTRACT NUMBER 201, DATED AUGUST 5, 1879.
THE N 1/4 AND THE SECTION CORNER COMMON TO SECTIONS 26, 27, 34, & 35 WERE REMONUMENTED FROM ORIGINAL EVIDENCE BY A. JOSEPH GARRISON UNDER BLM GROUP 350, DATED MAY 3, 1957.
SECTION 26 WAS SUBSEQUENTLY RESURVEYED AND PARTIALLY SUBDIVIDED BY DUANE I. GRIFFITH, L.S. 644, IN NOVEMBER OF 1988, AS SHOWN ON SURVEY OF RECORD, FILE NUMBER 11-84 UNION COUNTY SURVEYOR.

FIELD NOTE REFERENCE:
BOOK 1 AND BOOK 1A, OF THE RESERVOIR CADASTRAL SURVEY.

SURVEYOR'S CERTIFICATE

I, WILLIAM R. WELLS, A REGISTERED PROFESSIONAL LAND SURVEYOR IN THE STATE OF OREGON, DO HEREBY CERTIFY THAT THIS PLAT, AND THE CORNER RECORDS FILED SEPARATELY, ARE A CORRECT REPRESENTATION OF A SURVEY PERFORMED BY ME OR UNDER MY DIRECT SUPERVISION DURING THE MONTHS OF JUNE, 1996 THRU NOVEMBER, 1996 AT THE REQUEST OF THE USDA, FOREST SERVICE, AND IN CONFORMANCE WITH THE CONTRACT.

THIS CERTIFICATION APPLIES TO THIS PLAT, AND THE CORNER RECORDS FILED SEPARATELY.

REGISTERED PROFESSIONAL LAND SURVEYOR
William R. Wells
OREGON
JULY 22, 1977
WILLIAM R. WELLS
RENEWS 06/30/98

William R. Wells
WILLIAM R. WELLS, RPLS
OREGON LICENSE No. 1106

EXAMINED AND ACCEPTED FOR THE U.S. FOREST SERVICE THIS 26 DAY OF JUNE, 1996. *Barry Shum* cor

I CERTIFY THAT THIS SURVEY WAS PERFORMED AT THE REQUEST OF THE WILLOWA WHITMAN NATIONAL FOREST.
William R. Wells
NATIONAL FOREST SUPERVISOR

6-27-96
DATE

NARRATIVE OF SURVEY

THIS SURVEY WAS PERFORMED AT THE REQUEST OF THE WILLOWA WHITMAN NATIONAL FOREST UNDER CONTRACT NUMBER 53-04M3-3-0102. THE PURPOSE OF THIS SURVEY WAS TO LOCATE AND POST CERTAIN FOREST BOUNDARIES IN THE NORTHEAST QUARTER OF THE SOUTHWEST QUARTER OF SECTION 26, TOWNSHIP 2 SOUTH, RANGE 36 EAST, N.M., UNION COUNTY, OREGON.

THE WEST 1/4 CORNER, SOUTHWEST SECTION CORNER AND SOUTH 1/4 CORNER OF SECTION 26 HAVE BEEN PREVIOUSLY REMONUMENTED FROM ORIGINAL EVIDENCE BY OTHERS AS NOTED. THE CENTER 1/4 CORNER WAS SET BY DUANE I. GRIFFITH OPLS 644 IN 1988 AS SHOWN ON SURVEY RECORD 11-84, COUNTY SURVEY RECORDS. THE POSITIONS OF THESE MONUMENTED CORNERS WERE DETERMINED BY DIRECT GPS OBSERVATION USING ASHTACH DUAL FREQUENCY RECEIVERS. NOAA HIGH ACCURACY REFERENCE NETWORK (HARN) STATIONS 916 HILL RESET (PID:RB1488), COVE (PID: RA0222), AND FORT (PID: RB1484) WERE USED AS REFERENCE CONTROL FOR THE NETWORK.

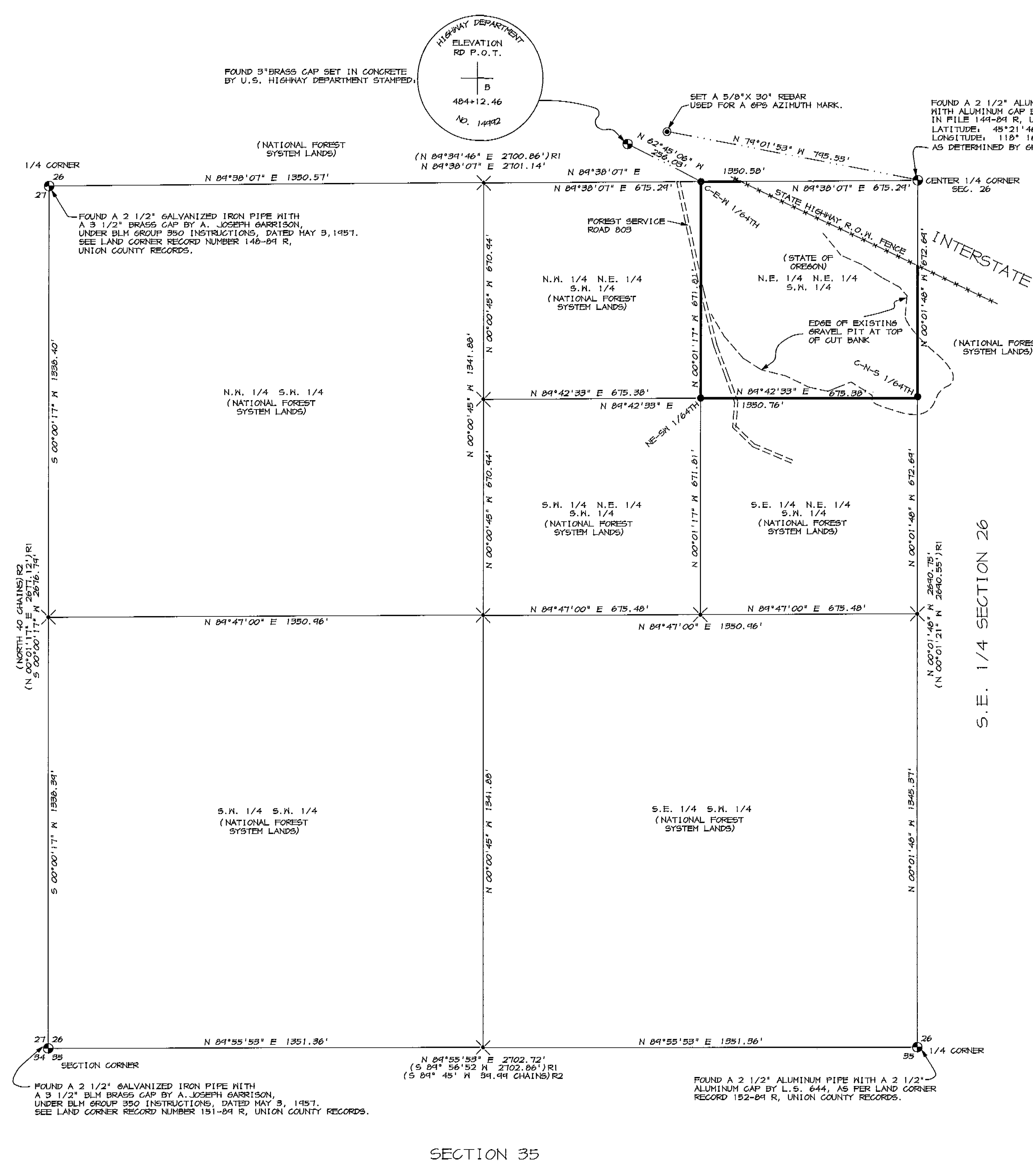
AS SHOWN, THE ROCK PIT ENCROACHES ONTO NATIONAL FOREST SYSTEM LANDS ALONG THE SOUTH AND EAST BOUNDARIES AT THE SOUTHWEST CORNER OF THE NORTHEAST QUARTER OF THE NORTHEAST QUARTER OF THE SOUTHWEST QUARTER.

THE BOUNDARY POSTING AND CORNER MONUMENTATION MEASUREMENTS WERE MADE USING A SOKKIA SET 58 AUTOMATIC TOTAL STATION HAVING STANDARD ERRORS OF ±3 SECONDS ANGULAR, AND 3MM ±3 PARTS PER MILLION TIMES DISTANCE FOR LINEAR MEASUREMENT. CLOSED TRAVERSES WERE ADJUSTED USING THE LEAST SQUARES METHOD. OFFSETS TO POSTED LINE WERE MADE WITH A HAND COMPASS AND STEEL TAPE, FROM SURVEY CONTROL POINTS.

BEARINGS ARE BASED ON OREGON NORTH ZONE GRID BEARINGS DERIVED FROM GPS OBSERVATIONS AND WERE ROTATED TO GEODETIC BEARINGS AT THE SECTION CORNER COMMON TO SECTIONS 35 & 36 T. 2 S., R. 36 E., AND SECTIONS 1 & 2, T. 3 S., R. 36 E., N.M. GRID DISTANCES WERE CONVERTED TO GROUND DISTANCES USING A COMBINED (GRID AND ELEVATION) FACTOR OF 1.00026343. MEASUREMENTS SHOWN ON THIS RECORD OF SURVEY ARE GROUND DISTANCES. LATITUDES AND LONGITUDES SHOWN ARE NAD 83(91) DATUM.

LEGEND

- SET 2 1/2" X 30" ALUMINUM PIPE WITH A 2 1/2" MAGNETIZED ALUMINUM CAP.
- ⊕ FOUND EXISTING MONUMENT AS NOTED.
- × CALCULATED POSITION, NOT FOUND OR SET.
- (XOX)R1 RECORD BEARINGS & DISTANCES PER SURVEY NO. 11-84, UNION COUNTY SURVEYOR.
- (XOX)R2 RECORD BEARINGS & DISTANCES FROM ORIGINAL OLO NOTES.
- STATE HIGHWAY RIGHT OF WAY FENCE.
- SECTION OR SECTION SUBDIVISION LINE.
- EDGE OF EXISTING GRAVEL PIT.
- NATIONAL FOREST BOUNDARY POSTED ON THIS SURVEY WITH 6" STUDDED T" STEEL FENCE POSTS WITH SIGNS 34-2 ATTACHED.
- ===== EXISTING ROAD.
- REFERENCE LINE.



SECTION 35

UNION COUNTY SURVEYOR
Date Received 7-10-96
Date Filed 7-10-96
By: R. Robinson, Deputy
File No. 028-1996

TOMKINS-WELLS JOINT VENTURE
A PARTNERSHIP
P.O. BOX 1696, 357 N.E. HWY 11
PENDLETON, OR 97801
PHONE: (503) 276-6362

PROJECT:
RESERVOIR CADASTRAL SURVEY
CONTRACT NO.
53-04M3-3-0102

SHEET 1 OF 1 VRES26PL