

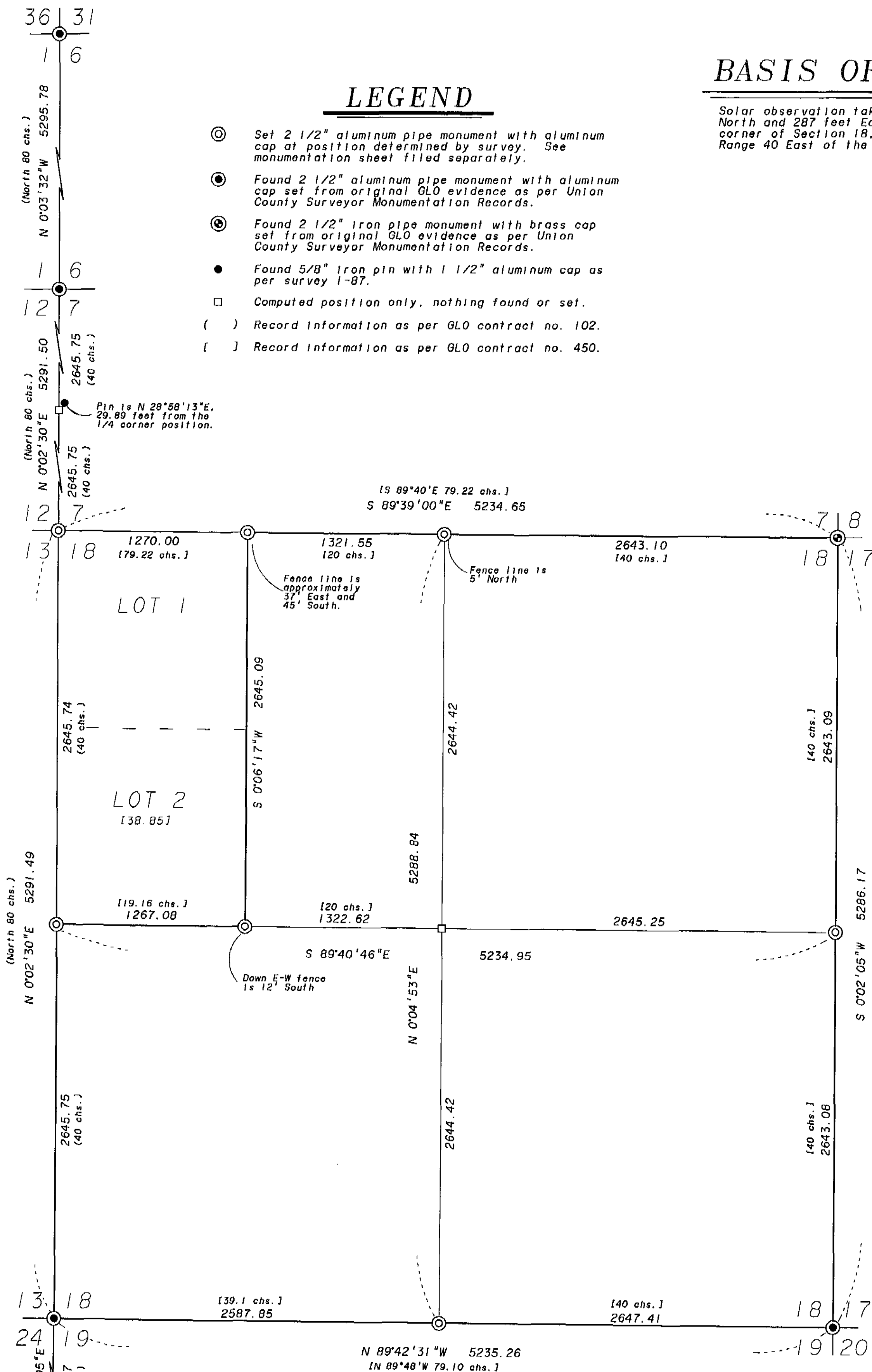
BASIS OF BEARING

Solar observation taken at a point 1170 feet North and 287 feet East of the Southeast corner of Section 18, Township 1 North, Range 40 East of the Willamette Meridian.



LEGEND

- ⊙ Set 2 1/2" aluminum pipe monument with aluminum cap at position determined by survey. See monumentation sheet filed separately.
- Found 2 1/2" aluminum pipe monument with aluminum cap set from original GLO evidence as per Union County Surveyor Monumentation Records.
- ⊙ Found 2 1/2" iron pipe monument with brass cap set from original GLO evidence as per Union County Surveyor Monumentation Records.
- Found 5/8" iron pin with 1 1/2" aluminum cap as per survey 1-87.
- Computed position only, nothing found or set.
- () Record information as per GLO contract no. 102.
- [] Record information as per GLO contract no. 450.



REFERENCE MATERIAL

- Survey 53-84
- Survey 1-87
- GLO Contract no. 102, dated July 20, 1863
- GLO Contract no. 450, dated June 11, 1882

REGISTERED
PROFESSIONAL
LAND SURVEYOR
Jeffery P. Petersen
OREGON
JULY 20, 1993
JEFFERY P. PETERSEN
2625
Renewal Date: Dec. 31, 1996

UNION COUNTY
SURVEYOR
Date Received 7-30-96
Date Filed 7-31-96
By *R. Robinson, Deputy*
File No. 025-1996

NARRATIVE

This survey was ordered by Steve Guernsey on behalf of Boise Cascade Corporation. Mr. Guernsey requested that Section 18 be subdivided and Government Lots 1 and 2 be monumented. The controlling corners needed to subdivide Section 18 have also been monumented.

The northwest corner of Section 18 was placed by single proportion using the found corners to the north and south. The North and South 1/4 corners of Section 18 were placed at 40 chain proportionate distance between their respective section corners. The East and West 1/4 corners were placed by single proportion between their respective section corners. The West 1/16 corner (the Northeast corner of Lot 1) was placed at 20 chain proportionate measurement between the North 1/4 corner and the Northwest section corner. The Center-West 1/16 corner (the Southeast corner of Lot 2) was placed at 20 chain proportionate measurement between the Center 1/4 corner and the West 1/4 corner. The GLO record area of Lot 2 was used to determine the parenthetical record distance along the South line of Lot 2.

BAGETT, GRIFFITH & BLACKMAN
2006 Adams Avenue, LaGrande, Oregon
Map of Survey
Section 18, Township 1 South,
Range 40 East of the Willamette
Meridian.
Union County, Oregon

SURVEYED FOR	Boise Cascade Corporation	
SURVEYED BY	JPP	7-96
Scale: 1" = 500'	Drawn by: JPP	7-96