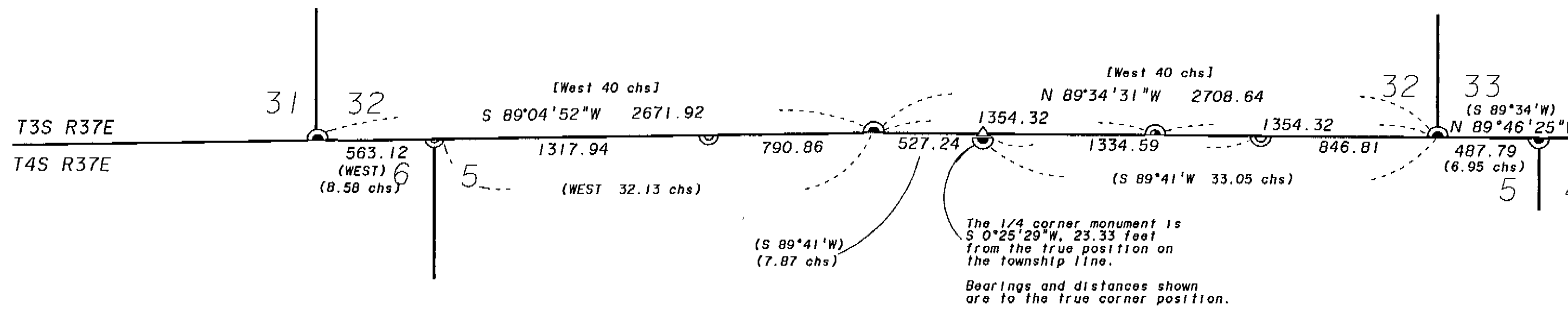




BASIS OF BEARING

Solar observations taken at a point 546 feet West of the SE corner of Section 32, Township 3 South, Range 37 East



LEGEND

- Found 2 1/2" aluminum pipe monument set from original GLO evidence as per survey 045-1992 and Union County Monumentation Records.
- Found 2 1/2" aluminum pipe monument as per survey 045-1992.
- Computed position only, nothing found or set.
- Set 2 1/2" x 30" aluminum pipe monument. See monumentation records filed separately.
- Record information as per GLO contract no. 120.
- Record information as per GLO contract no. 452.

REFERENCE MATERIAL

Field notes of General Land Office (GLO)
contract numbers 120 and 456.
Survey 045-1992
Union County Monumentation Records

NARRATIVE

This survey was ordered by Jerry McKague of Louisiana Pacific and Ted Atkinson. The Northwest section corner and East and West 1/16 corners of section 5 were set.
The Township line was established by William H. O'Dell under GLO contract no. 120 in 1867. Herman D. Graden retraced the Township line in 1882 under GLO contract no. 452 in order to subdivide T4S R37E. Graden used O'Dell's corners for alignment of the Township line and set additional 1/4 and section corners along the Township line that pertained to the South only. O'Dell's corners are senior and do control the alignment of the Township line.
The monument set by Graden and re-monumented by survey 045-1992 for the North 1/4 of Section 5 was found to be southerly of the Township line as shown. The true 1/4 corner position was computed by perpendicular offset from the found Graden monument to the line established by the found O'Dell monuments. The original monument was not found at the Northwest corner of Section 5. It was placed by single proportion using Graden's record information between the found O'Dell monuments. The 1/16 corners were placed by single proportion on the Township line using Graden's record information.

REGISTERED
PROFESSIONAL
LAND SURVEYOR
Jeffery P. Petersen
OREGON
JULY 20, 1995
JEFFERY P. PETERSEN
2625
Renewal Date: Dec. 31, 1998

UNION COUNTY
SURVEYOR
Date Received 5-31-96
Date Filed 5-31-96
By *Gregory T. Olsen*
File No. 022-1996

BAGETT, GRIFFITH & BLACKMAN
2006 Adams Avenue, LaGrande, Oregon
Map of Survey
Location of the northwest corner and the East and West 1/16 corners on the North line of Section 5, Township 4 South, Range 37 East of the Willamette Meridian.
UNION COUNTY, OREGON
SURVEYED FOR Louisiana Pacific / Atkinson
SURVEYED BY JPP 5-96
Scale: 1" = 500' Drawn by: JPP 6-96

022-1996