

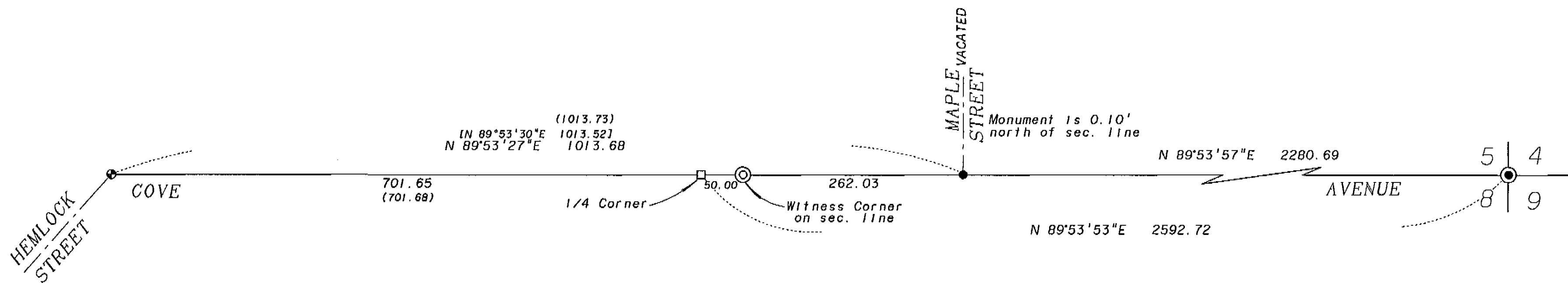
REFERENCE MATERIAL

UNION COUNTY SURVEYS
18-89
002-1992

UNION COUNTY MONUMENTATION RECORDS

BASIS OF BEARING

Forward bearing as published by the U.S.C.
and G.S. from Δ COLLEGE to Δ VALLEY
Dated 1946.



NARRATIVE

This survey was ordered by the Union County Surveyor in order to place the 1/4 corner between Sections 5 and 8. The 1/4 corner was monumented by the 1922 monumentation of La Grande as shown on survey 18-89. The monument set by that survey has since been destroyed by the construction of the Island Avenue underpass. The 1/4 corner position is re-established by proportionate measurement between the found monuments of Cove & Hemlock and Cove & Maple. The 1/4 corner position falls in the underpass so a witness corner was set 50.00 feet easterly on the section line.

LEGEND

- ⊙ Set 2 1/2" x 30" aluminum pipe with cap. See monumentation sheet filed separately.
- Found 2" brass cap monument is valve box as per Union County monumentation records.
- ⊙ Found 2" brass cap monument is valve box as shown on survey 63-73.
- True 1/4 corner position, nothing found or set.
- Found 3/4" iron pipe as per survey 18-89.
- () Record information from survey 18-89.
- [] Record information from survey 002-1992.

REGISTERED
PROFESSIONAL
LAND SURVEYOR

Jeffery P. Petersen
OREGON
JULY 20, 1993
JEFFERY P. PETERSEN
2625
Renewal Date: Dec. 31, 1996

UNION COUNTY
SURVEYOR
Date Received 3-28-96
Date Filed 3-28-96
By R. ROBINSON, DEPUTY
File No. 015-1996

BAGETT, GRIFFITH & BLACKMAN
2006 Adams Avenue, LaGrande, Oregon
Map of Survey
Witness corner for the 1/4 corner between Sections 5 and 8, township 3 South, Range 38 East of the Willamette Meridian.
UNION COUNTY, OREGON

SURVEYED FOR	Union County Surveyor	
SURVEYED BY	JPP	3-96
Scale: 1" = 100'	Drawn by: JPP	3-96

015-1996