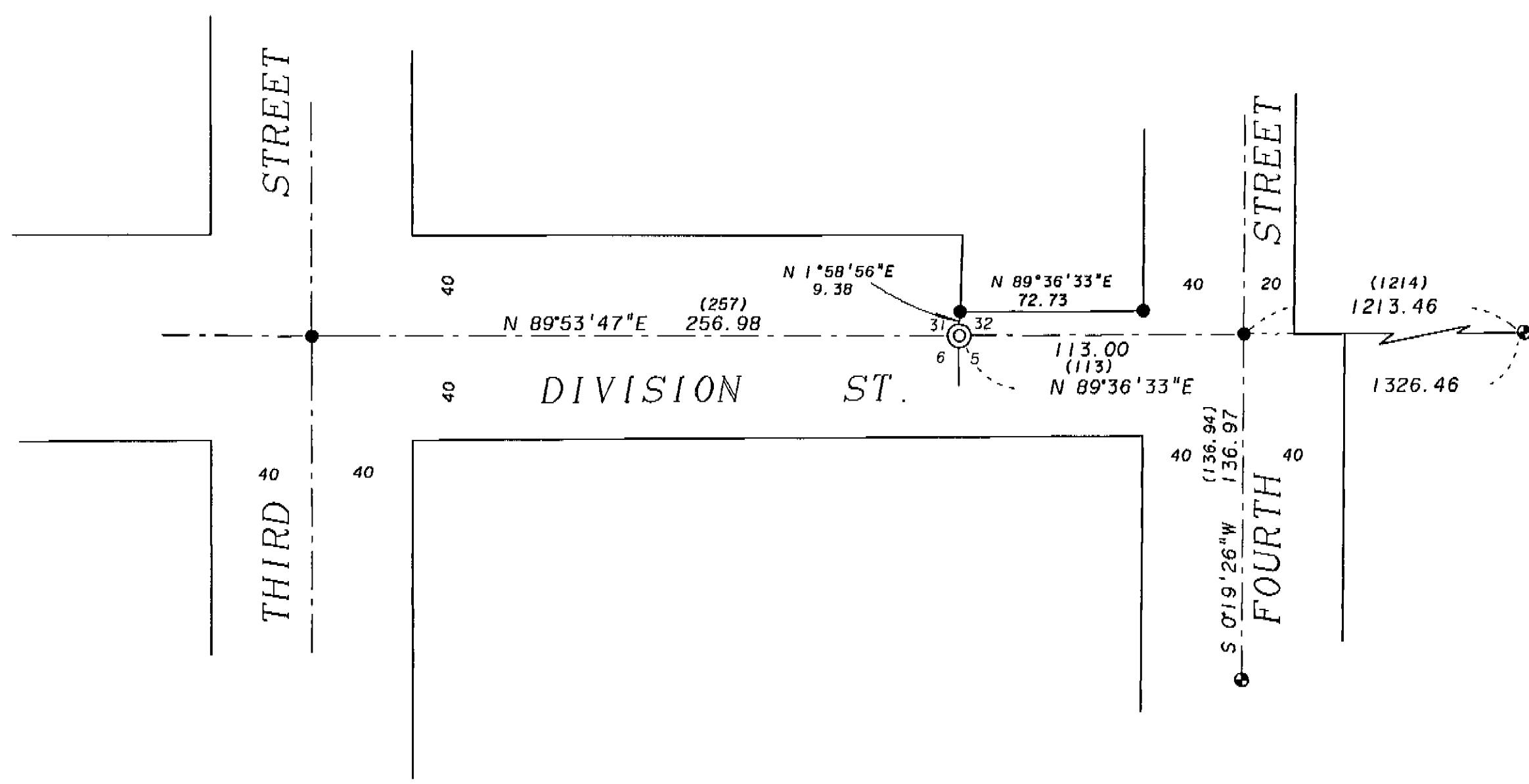




### BASIS OF BEARING

Forward bearing as published by the U.S.C. and G.S. from  $\Delta$  COLLEGE to  $\Delta$  VALLEY Dated 1946.



### LEGEND

- ⊙ Set 1/2" x 24" copper rod with 2 1/2" brass cap, in monument box. See monumentation sheet filed separately.
- Found 5/8" iron pin with plastic cap marked "BOA SURVEY MARKER" as per survey 03-84.
- ⊕ Found 3/4" pipe as per survey 18-89.
- ( ) Record information from survey 18-89.

### NARRATIVE

This survey was performed at the request of the Union County Surveyor in order to monument the section corner common to sections 31 and 32, Township 2 South, Range 38 East and sections 5 and 6, Township 3 South, Range 38 East of the Willamette Meridian. The section corner was placed at the position shown on survey 32-83. Survey 32-83 placed the corner from the found monuments of the 1922 monumentation of La Grande filed as survey 18-89. See the monumentation sheet filed separately for this corner.

### REFERENCE MATERIAL

Survey 32-83  
Survey 03-84  
Survey 18-89

REGISTERED  
**PROFESSIONAL  
LAND SURVEYOR**  
*Jeffery P. Petersen*  
OREGON  
JULY 20, 1995  
**JEFFERY P. PETERSEN**  
2625  
Renewal Date: Dec. 31, 1996

**UNION COUNTY  
SURVEYOR**  
Date Received 3-28-96  
Date Filed 3-28-96  
By R. ROBINSON, DEPUTY  
File No. 014-1996

**BAGETT, GRIFFITH & BLACKMAN**  
2006 Adams Avenue, LaGrande, Oregon  
Map of Survey  
The section corner common to sections 31 and 32, Township 2 South, Range 38 East and sections 5 and 6, Township 3 South, Range 38 East of the Willamette Meridian.  
UNION COUNTY, OREGON

SURVEYED FOR	UNION COUNTY SURVEYOR	
SURVEYED BY	JPP	2-96
Scale: 1" = 50'	Drawn by: JPP	2-96

014-1996