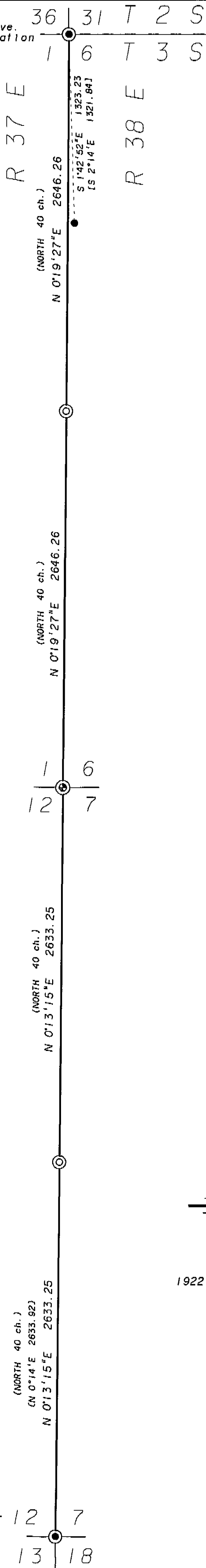


Found 4" iron pipe, see narrative.
Accessories taken, see monumentation
sheet filed separately.



BASIS OF BEARING

Forward bearing as published by the U. S. C.
and G. S. from Δ COLLEGE to Δ VALLEY
Dated 1946.

LEGEND

- Found monument as noted.
- ⊙ Found 5/8" rebar replaced with 2 1/2" x 30" aluminum pipe. See monumentation sheet filed separately.
- Found 1" axle shaft as per survey 54-73.
- ⊙ Set 2 1/2" x 30" aluminum pipe. See monumentation sheet filed separately.
- () Record GLO information.
- [] Record information as per survey 54-73.
- [] Record information as per survey 16-77.

NARRATIVE

This survey was performed at the request of the Union County Surveyor. The Range line from the Southwest corner of Section 7 to the Northwest corner of Section 6 was surveyed and monumented. At the Township corner a 4" iron pipe was found. I believe this pipe to be a perpetuation of the monument set by A. H. McLain as per the field notes for the 1922 monumentation of La Grande. Mr. McLain calls setting a 2x2 hub from a found bearing tree stump. A 5/8" rebar in an ancient mound of stone was found at the Southwest corner of Section 6. This position fits relatively well with the section corners to the North and South and with the GLO topo call of 1 chain North of the "edge of table". This position is accepted as the section corner. I use the brass cap found at the Southwest corner of Section 7 as per survey 16-77 and as used on the Plat of Morgan Lake Estates. No evidence was found of the West 1/4 corners of Sections 6 and 7. They were placed by single proportion measurement using the found section corners.

REFERENCE MATERIAL

Survey 16-77
Survey 54-73
Survey 18-89
Narrative Drawer 1/14
1922 Field Notes of LaGrande Monumentation
Union County Monumentation Records
Plat of Morgan Lake Estates
GLO contract no. 102 by Timothy W. Davenport, dated July 20, 1863.

REGISTERED
PROFESSIONAL
LAND SURVEYOR

Jeffery P. Petersen
OREGON
JULY 20, 1993
JEFFERY P. PETERSEN
2625

Renewal Date: Dec. 31, 1996

UNION COUNTY
SURVEYOR
Date Received 3-20-96
Date Filed 3-20-96
By *Hyun T. Ok*
File No. 009-1996

BAGETT, GRIFFITH & BLACKMAN
2006 Adams Avenue, LaGrande, Oregon
Map of Survey
The northerly 2 miles of the Range line between Range 37 East and 38 East, Township 3 South of the Willamette Meridian.
UNION COUNTY, OREGON
SURVEYED FOR UNION COUNTY SURVEYOR
SURVEYED BY JPP 2-96
Scale: 1" = 500' Drawn by: JPP 2-96

Found 2" brass cap monument as per survey 16-77. Accessories taken, see monumentation sheet filed separately.