

# BASIS OF BEARING

Solar observation taken at the Southeast corner of Section 13, Township 4 South, Range 39 East of the Willamette Meridian.

# REFERENCE MATERIAL

- Plat of Hannah's Addition to Union
- Plat of Second Street Extension
- Survey Number 64-75
- Survey Number 41-76
- Survey Number 42-76
- Survey Number 101-77
- Survey Number 40-78
- Survey Number 51-78
- Survey Number 54-78
- Survey Number 55-78
- Survey Number 23-89
- Minor Partition Number 1991-012
- Deed Volume 144 Page 251
- Preliminary Title Report Number 95-6990
- prepared by Eastern Oregon Title, Inc.

# NARRATIVE

This survey was done at the request of Glavis Reed. I use the found monuments of survey number 64-75 to locate Second Street. I then locate the North line of Blocks 21 and 22 by driving a line from the Northerly pin of said survey to the pin found at the Northeast corner of Block 21. I locate the Southeast corner of Block 21 by intersecting a line South from the Northeast corner of Block 21 and a line East from the Northeast corner of Minor Partition number 1991-012. Both of these lines were intersected at the record bearing of survey number 23-89, which located the West quarter corner of section 19. That survey placed the corner in a different position than was previously used for the establishment of Hannah's Addition. The new location shifted the South line of the addition approximately 6 feet South, creating the excess in the South tier of blocks as shown. The centerline of First Street at the South line of Jefferson Street was called on survey 64-75 as being a 4x4 post. The position was located on surveys 42-76 and 54-78. Since that time, the post has been removed. I hold the location as previously determined. This creates a slight excess in Block 21, and a slight deficiency in Block 22 as shown. I find the existing fence along the West line of this parcel to be very harmonious, with the remaining fences diverging from the true property line as shown. I find no other unusual conditions on this survey.

# LEGEND

- Found 5/8" Iron pin set by survey number 64-75
- Found 5/8" Iron pin with plastic cap marked BGA SURVEY MARKER set by survey number 42-76
- ▲ Found 5/8" Iron pin with plastic cap marked BGA SURVEY MARKER set by partition plat no. 1991-012
- Set 5/8"x30" Iron pin with plastic cap marked BGB SURVEY MARKER set
- ( ) Record distance of Hannah's Addition
- x-x-x- Existing fence line
- - - - - Centerline

**UNION COUNTY SURVEYOR**

Date Received 5/23/95

Date Filed 5/25/95

By [Signature]

File No. 015-1995

REGISTERED PROFESSIONAL LAND SURVEYOR

[Signature]

OREGON JULY 17, 1988

**RICK G. ROBINSON**

2219

Renewal Date: Dec. 31, 1998

**BAGETT, GRIFFITH & BLACKMAN**

2006 Adams Avenue, LaGrande, Oregon

Map of Survey

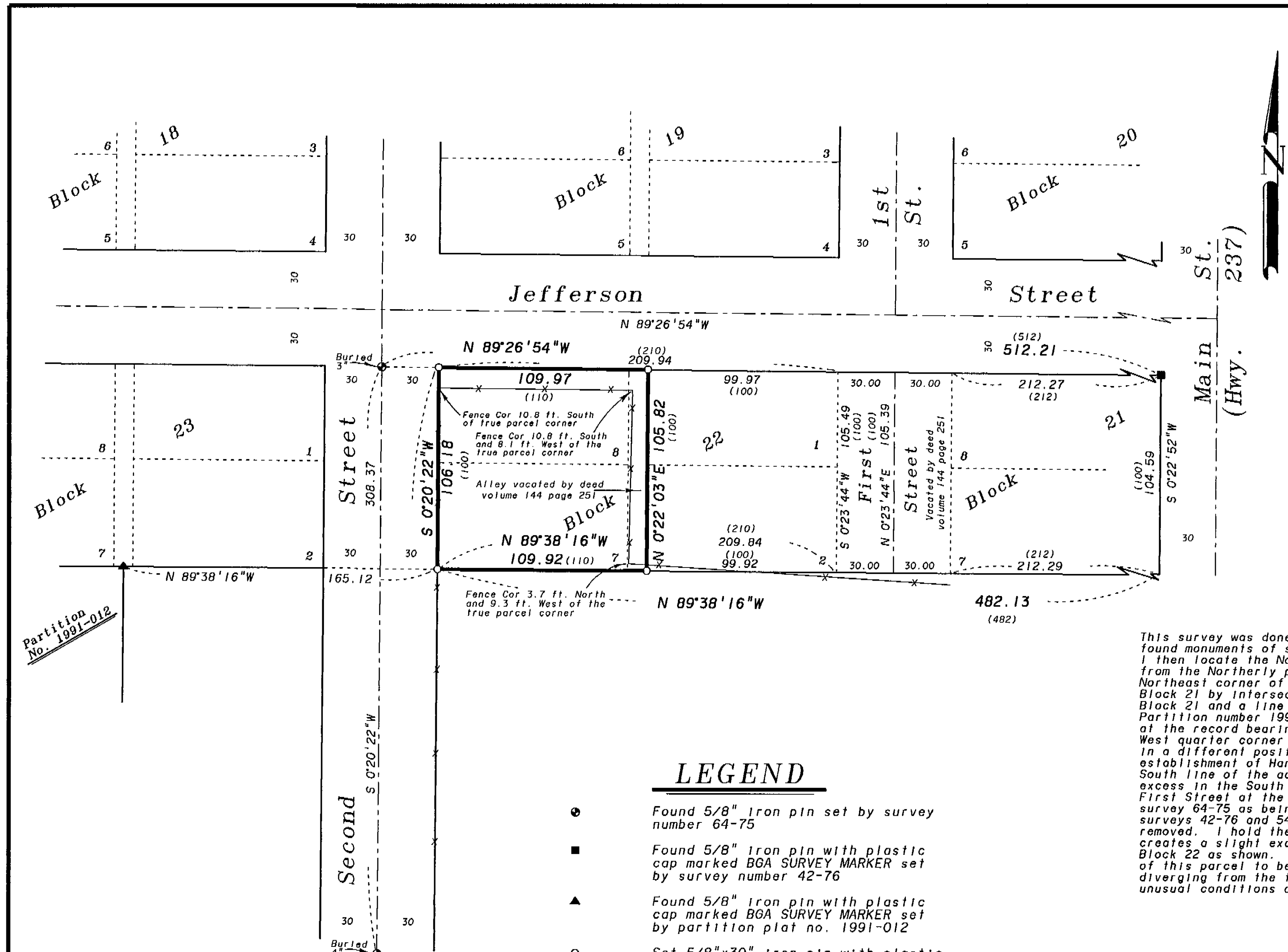
Lots 7 and 8 and the vacated alley Block 22

Hannah's Addition to Union, Oregon

UNION COUNTY, OREGON

SURVEYED FOR	Glavis Reed	
SURVEYED BY	R.G.R.	5-95
Scale: 1" = 40'	Drawn by: R.G.R.	5-95

Survey Number 015-1995



Partition No. 1991-012