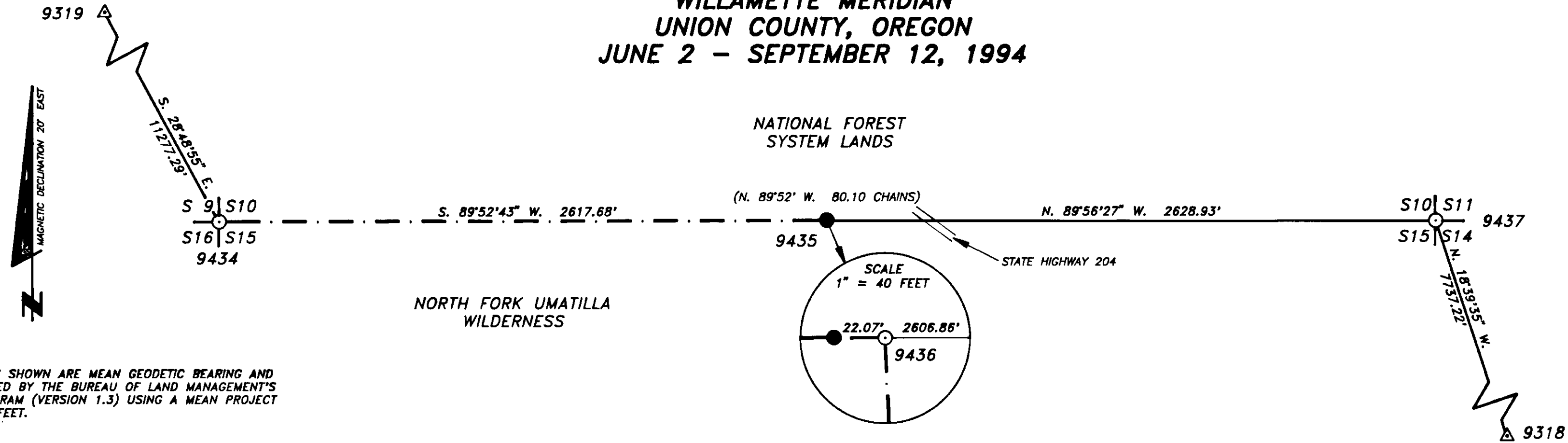


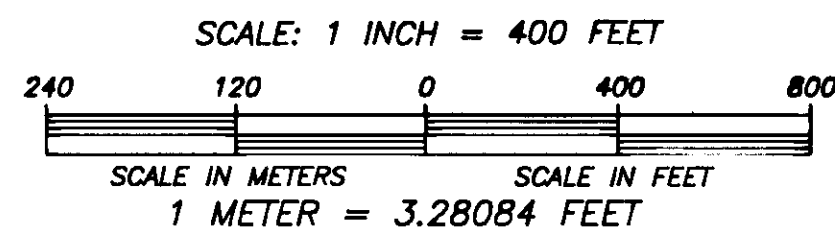
**SURVEY FOR
UMATILLA NATIONAL FOREST
OF
NORTH FORK UMATILLA WILDERNESS
ANGLE POINT 461
SECTIONS 10 AND 15
TOWNSHIP 3 NORTH, RANGE 38 EAST
WILLAMETTE MERIDIAN
UNION COUNTY, OREGON
JUNE 2 - SEPTEMBER 12, 1994**



NOTE: MEASUREMENTS SHOWN ARE MEAN GEODETIC BEARING AND DISTANCES CALCULATED BY THE BUREAU OF LAND MANAGEMENT'S CMM SOFTWARE PROGRAM (VERSION 1.3) USING A MEAN PROJECT ELEVATION OF 5000 FEET.

LEGEND

- MONUMENT FOUND
- MONUMENT SET
- △ CONTROL POINT
- () RECORD MEASUREMENT (JOHN W. KIMBRELL, 1903)
- - - WILDERNESS BOUNDARY (UNMARKED)



DATUM: NAD83(1991)
STATE PLANE COORDINATES: OREGON NORTH ZONE (meters)

NO.	LATITUDE	LONGITUDE	NORTHING(m)	EASTING(m)
9318	45°43'34.73516" N.	118°01'33.06432" W.	231824.660	2692557.174
9319	45°46'24.58455" N.	118°04'38.56608" W.	236944.417	2688390.851
9434	45°44'47.05978" N.	118°03'21.92059" W.	233984.829	2690137.023
9435	45°44'47.11451" N.	118°02'45.01792" W.	234010.693	2690934.238
9436	45°44'47.11428" N.	118°02'44.70677" W.	234010.890	2690940.960
9437	45°44'47.08772" N.	118°02'07.95652" W.	234034.248	2691734.955

I, DAVID A. SCHLAICH, A REGISTERED LAND SURVEYOR IN THE STATE OF OREGON, HEREBY CERTIFY THAT THIS PLAT AND THE NOTES HEREON ARE A TRUE AND CORRECT REPRESENTATION OF A SURVEY I CONDUCTED FROM JUNE 2 THROUGH SEPTEMBER 12 OF 1994, AT THE REQUEST OF THE UMATILLA NATIONAL FOREST, IN ACCORDANCE WITH THE STATUTES OF OREGON AND THE 1973 B.L.M. MANUAL OF SURVEYING INSTRUCTIONS.

David A. Schlaich
DAVID A. SCHLAICH --- RLS 2308
UMATILLA NATIONAL FOREST
2517 S.W. HAILEY AVENUE
PENDLETON, OREGON 97801
PHONE: (503) 278-3747

REGISTERED
PROFESSIONAL
LAND SURVEYOR

DAVID A. SCHLAICH
JULY 16, 1987
RENEWS 12/31/94

PURPOSE:
THE PURPOSE OF THIS SURVEY WAS TO MONUMENT ANGLE POINT 461 OF THE NORTH FORK UMATILLA WILDERNESS.

HISTORY:
1903, JOHN W. KIMBRELL, U.S. DEPUTY SURVEYOR, SUBDIVIDED THE TOWNSHIP UNDER GENERAL LAND OFFICE CONTRACT NUMBER 700.

1993, DAVID A. SCHLAICH, REGISTERED LAND SURVEYOR NUMBER 2308, CONDUCTED A GPS CONTROL SURVEY IN THE AREA FOR THE UMATILLA NATIONAL FOREST (COUNTY SURVEY NO. 007-1994).

1994, DENNIS L. GAYLORD, REGISTERED LAND SURVEYOR NUMBER 1636, REMONUMENTED THE 1/4 CORNER OF SECTIONS 10 AND 15.

PROCEDURES:
THE DESCRIPTION USED TO LOCATE ANGLE POINT 461 WAS OBTAINED FROM THE PERMANENT, OPEN 2320 FILES LOCATED IN THE SUPERVISOR'S OFFICE OF THE UMATILLA NATIONAL FOREST LOCATED AT PENDLETON, OREGON.

ANGLE POINT 461 WAS ESTABLISHED ON THE SECTION LINE BETWEEN SECTIONS 10 AND 15, AT AN ELEVATION OF 5000 FEET, USING TRIGONOMETRIC LEVELING, WITH POINTS 9318 AND 9319 BEING USED AS CONTROL (NATIONAL GEODETIC VERTICAL DATUM OF 1929).

THE SURVEY WAS CONDUCTED USING A TOPCON GTS-4 TOTAL STATION. THE BASIS OF BEARING WAS THE GEODETIC INVERSE BETWEEN POINTS 9318 & 9319 (LATITUDE AND LONGITUDE).

BEARING TREES WERE TIED USING THE TOPCON GTS-4 AND DISTANCES WERE MEASURED AT SIDE CENTER ONE FOOT ABOVE THE ROOT CROWN. DIAMETERS WERE MEASURED AT BREAST HEIGHT. ALL NEW BEARING TREES ARE DOUBLE BLAZED AND HAVE A 3/4" DIAMETER BRASS WASHER STAMPED "RLS 2308" NAILED NEXT TO THE "BT" SCRIBING ON THE LOWER BLAZE.

THE FIELD BOOK IS ON FILE AT THE SUPERVISOR'S OFFICE OF THE UMATILLA NATIONAL FOREST.

CORNER INFORMATION:

9318
ECCENTRIC TO BM W-514 (T. 3 N., R. 38 E., SECTION 23)

FOUND A 3 1/4" DIAMETER ALUMINUM CAP, SET FLUSH WITH THE GROUND MARKED AS SHOWN (ELEVATION 4962.38 FEET).

9319
BENCH MARK T-279 (T. 3 N., R. 38 E., SECTION 5)

FOUND A BRONZE DISK SET IN CONCRETE FLUSH WITH THE GROUND, MARKED AS SHOWN (ELEVATION 4965.17 FEET).

NARRATIVE:

9434
CORNER OF SECTIONS 9, 10, 15 AND 16.

FOUND A STONE 18" BY 8" BY 7" WITH NOTCHES ON ONE EDGE, JUST DOWN HILL OF A LARGE MOUND STONE. 1 SET IN PLACE OF THE STONE A 2 1/2" DIAMETER BY 30" ALUMINUM PIPE, WITH 3 1/4" DIAMETER ALUMINUM CAP, 12" IN THE GROUND AND RAISED A MOUND OF STONE 2" IN DIAMETER BY 1 1/2" HIGH (PLACED STONE ON NORTH SIDE OF MONUMENT). CAP IS MARKED AS SHOWN, FROM WHICH:
6" DOUGLAS FIR BEARS N. 76 1/2° E., 85.4 FEET, SCRIBED "T3N R38E S10"BT".
REFERENCE MONUMENT, 5/8" BY 24" REBAR, WITH 1 1/2" ALUMINUM CAP, SET 17" IN THE GROUND, BEARS S. 37°23' E. 69.1 FEET, STAMPED "USDA-FS RM S15 69.1 FT 2308" WITH ARROW POINTING TOWARD CORNER.
REFERENCE MONUMENT, 5/8" BY 24" REBAR WITH 1 1/2" ALUMINUM CAP, SET 13" IN THE GROUND, BEARS S. 26°15' W., 66.6 FEET, STAMPED "USDA-FS RM S16 66.6 FT 2308" WITH ARROW POINTING TOWARDS CORNER.
AP-458, A 3 1/4" DIAMETER ALUMINUM CAP SET FLUSH WITH THE GROUND, BEARS N. 9°58' W., 57.63 FEET, STAMPED "NFU WILDERNESS AP-458 ELEV 5000 RLS 2308 1994".
A STONE, 28" BY 20" BY 12" WELL MARKED AND IN PLACE, (N. 7 1/4° W., 5.75 CHAINS) (1899 OBLITERATED CORNER).

9435
1/4 CORNER OF SECTIONS 10 AND 15

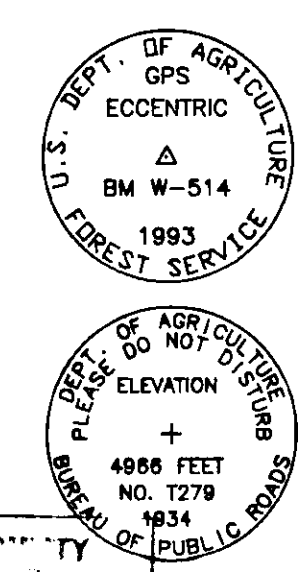
FOUND A 2 1/2" DIAMETER ALUMINUM PIPE, WITH 3 1/4" ALUMINUM CAP, PROJECTING 2" OUT OF THE GROUND SURROUNDED BY A STONE MOUND, MARKED AS SHOWN, FROM WHICH:
24" WESTERN LARCH BEARS N. 42° E., 42.3 FEET, SCRIBED "1/4 S10"BT" ON DOUBLE BLAZE (1994).
15" DOUGLAS FIR BEARS S. 59° E., 12.5 FEET, SCRIBED "1/4 S15"BT" ON DOUBLE BLAZE (1994).
29" DOUGLAS FIR BEARS S. 35° E., 23.8 FEET, SCRIBING "45" VISIBLE ON A PREVIOUSLY OPENED UPPER BLAZE AND HEALED LOWER BLAZE (ORIGINAL BT).
11" DOUGLAS FIR BEARS S. 42° W., 18.5 FEET, SCRIBED "1/4 S15"BT" ON DOUBLE BLAZE (1994).
DOUGLAS FIR, WITH 10 TO 12 LIMBS GROWING STRAIGHT UP 3" ABOVE GROUND, BEARS N. 81° W., 43.6 FEET, WITH VERY OLD AXE TRIMMED LIMBS BUT NO APPARENT BLAZE (ORIGINAL BT).
13" DOUGLAS FIR BEARS N. 61° W., 10.7 FEET, SCRIBED "1/4 S10"BT" ON DOUBLE BLAZE (1994).
THE 1994 BT'S HAVE A 3/4" BRASS WASHER STAMPED "PLS 1636" NAILED TO THE LOWER BLAZE BY THE "BT" SCRIBING.

9436
ANGLE POINT 461

AT THE INTERSECTION OF THE 5000 FOOT CONTOUR WITH THE LINE BETWEEN SECTIONS 10 AND 15, I SET A 5/8" BY 36" REBAR, WITH 3 1/4" DIAMETER ALUMINUM CAP, FLUSH WITH THE GROUND, MARKED AS SHOWN.

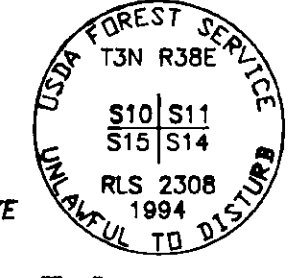
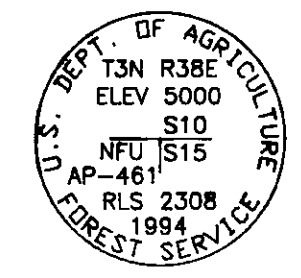
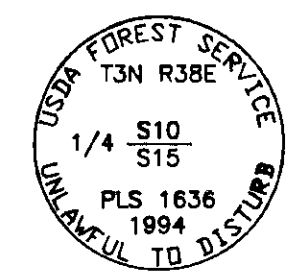
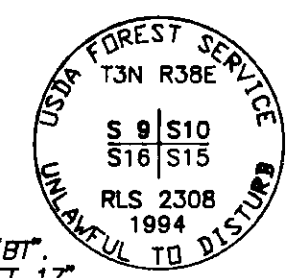
9437
CORNER OF SECTIONS 10, 11, 14 AND 15

FOUND THE ORIGINAL SOUTHEAST AND SOUTHWEST BEARING TREES. AT THE INTERSECTION OF RECORD BEARING AND DISTANCE FROM THE BEARING TREES I SET A 2 1/2" DIAMETER BY 30" ALUMINUM PIPE, WITH 3 1/4" DIAMETER ALUMINUM CAP, 25" IN THE GROUND, MARKED AS SHOWN, FROM WHICH:
20" WHITE FIR BEARS N. 19° E., 25.2 FEET, SCRIBED "T3N R38E S11"BT".
15" LODGEPOLE PINE BEARS S. 61° E., 2.0 FEET, WITH HEALED DOUBLE BLAZE (ORIGINAL BT).
9" WHITE FIR SNAG BEARS S. 36° W., 4.6 FEET, CHOPPED OPEN HEALED BLAZE TO REVEAL SCRIBING (ORIGINAL BT).
9" WHITE FIR BEARS S. 40° W., 27.6 FEET, SCRIBED "T3N R38E S15"BT".
17" WESTERN LARCH BEARS N. 23 3/4° W., 45.9 FEET, SCRIBED "T3N R38E S10"BT".



REVIEWED BY:
Dennis L. Gaylord 10/11/94
John P. Kline 10/12/94
I CERTIFY THAT THIS SURVEY WAS PERFORMED AT THE REQUEST OF THE UMATILLA NATIONAL FOREST SUPERVISOR

UNION COUNTY SURVEYOR
Date Received 10/26/94
Date Filed 10/26/94
By Hyatt Tolson
File No. 049-1994



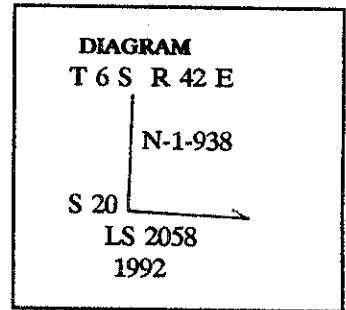
CERTIFIED RECORD OF LAND CORNER MONUMENTATION

History of original corner establishment:

At cor. no. 1 of Neglected lode. Set a galvanized iron pipe, 1 in. diam., 36 ins. long, 24 ins. in the ground, mkd. N-1-938, from which:

The ¼ sec. cor. of secs. 19 and 29, T6S R42E, W.M., Oregon, bears N.63°57'W., 1200.83 ft. dist., a basalt stone, marked and witnessed as described in the official record.

A fir, 10 ins. diam., bears S.68°W., 29 ft. dist., mkd. N-1-938 BT.
A fir, 8 ins. diam., bears S.85°W., 20.2 ft. dist., mkd. N-1-938 BT.



Description of corner evidence found:

Found 1½" pipe in a 24" x 12" mound of stone, from which:

A pine, 12 ins. diam., bears S.70°11'W., 28.52 ft. dist., healed blaze.
A pine, 10 ins. diam., bears S.86°10'W., 20.29 ft. dist., healed blaze.

Description of monument and accessories I established to perpetuate the original location of this corner:

Set a 3" diam. U.S.F.S aluminum capped pipe, 30" long, with magnet, 24" in ground and buried found pipe alongside, from which:

A pine, 8" diam., bears S.08°05'E., 4.07', scribed "N1 938 BT".

UNION COUNTY SURVEYOR	
Date Received	<u>8/18/99</u>
Date Filed	<u>10/22/99</u>
By	<u>[Signature]</u>
File No.	<u>649-1999R</u>

Narr. Power 1-21



Office of _____ County of _____
State of _____ I hereby certify that the within instrument was filed in this office
for record on the _____ day of _____, 19____
_____ by _____
(COUNTY OFFICIAL) (DEPUTY)

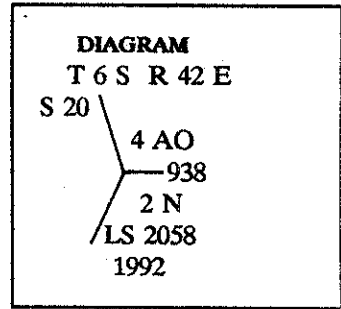
CERTIFIED RECORD OF LAND CORNER MONUMENTATION

History of original corner establishment:

At cor. no. 4, identical with cor. no. 2, Neglected lode, of this survey. Set a galvanized iron pipe, 1 in. diam., 36 ins. long, 24 ins. in the ground, mkd. AO-4-N-2-938, from which:

A fir, 12 ins. diam., bears S.50°E., 76.9 ft. dist. mkd. AO4-N2-938.

A pine, 8 ins. diam., bears N.25°E., 58.3 ft. dist., mkd. AO-4-N-2-938.



Description of corner evidence found:

Found 1½" pipe in a 30" x 12" mound of stone, from which:

A pine, 24 ins. diam., bears S.47°26'E., 76.74 ft. dist., healed blaze.

A pine, 38 ins. diam., bears N.29°22'W., 63.19 ft. dist., healed blaze.

Description of monument and accessories I established to perpetuate the original location of this corner:

Set a 3" diam. U.S.F.S aluminum capped pipe, 30" long, with magnet, 24" in ground and over found pipe, from which:

A pine, 10" diam., bears S.19°39'W., 81.23', scribed "N2 938 BT".

UNION COUNTY SURVEYOR

Date Received 8/18/94

Date Filed 10/22/94

By [Signature]

File No. 049-1994K

Nav. Drawer 1-21



Office of _____ County of _____
 State of _____ I hereby certify that the within instrument was filed in this office
 for record on the _____ day of _____, 19____
 _____ by _____
 (COUNTY OFFICIAL) (DEPUTY)