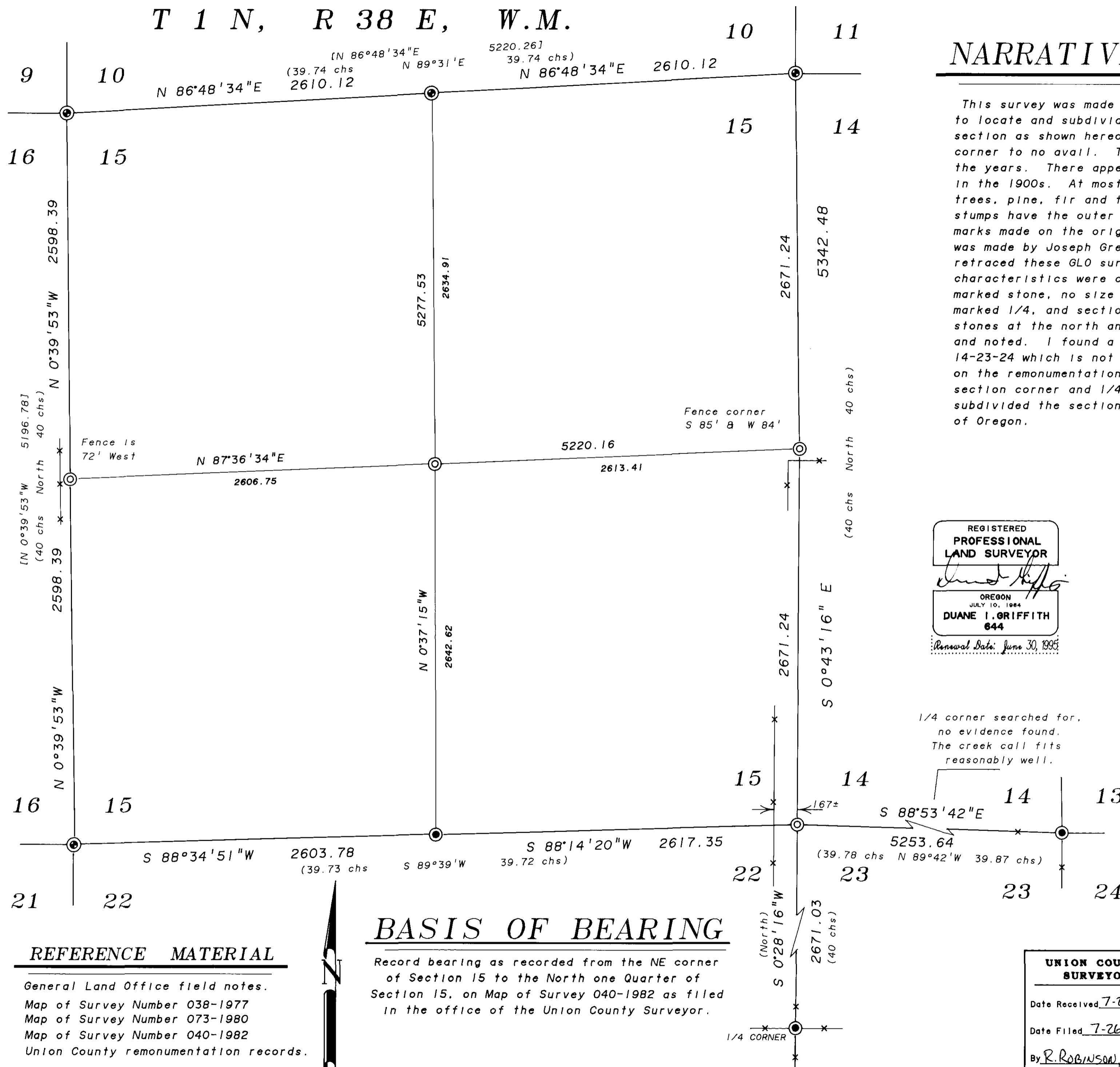


T 1 N, R 38 E, W.M.



NARRATIVE

This survey was made at the request of the UNION COUNTY SURVEYOR to locate and subdivide section 15. I found the corners of the section as shown hereon. I made a search in the area of the SE corner to no avail. The area has been logged several times over the years. There appears to have been a very severe fire early in the 1900s. At most of the search areas I find stumps of large trees, pine, fir and tamarack which have been burned. These stumps have the outer portion burned away, this destroyed the marks made on the original bearing trees. The original survey was made by Joseph Grey and William O'Dell in 1867. I have retraced these GLO surveyors in the past and find certain characteristics were common. One of these was the placing of a marked stone, no size or marks stated. I found 1/4 corners were marked 1/4, and section corners were marked +. I found marked stones at the north and east 1/4 corners of section 22 as shown and noted. I found a marked stone at the corner to sections 13-14-23-24 which is not called for. I accepted this stone as noted on the remonumentation record. I was forced to proportion the section corner and 1/4 section corners as shown. I then subdivided the section in accordance with the laws of the State of Oregon.

LEGEND

- ⊙ Found aluminum monument, set in survey 040-1982
- ⊙ Found evidence of original monument set 2-1/2" X 30" aluminum monument.
- ⊙ Set 2-1/2" X 30" aluminum monument at position determined by survey
- () Record GLO bearing and distance
- [] Record bearing and distance, MOS 40-82 if other than measured.
- *— Existing fence line.

REGISTERED PROFESSIONAL LAND SURVEYOR
 OREGON JULY 10, 1984
 DUANE I. GRIFFITH 644
 Renewal Date: June 30, 1995

1/4 corner searched for, no evidence found. The creek call fits reasonably well.

SEE MONUMENTATION RECORDS FILED SEPARATELY

REFERENCE MATERIAL

General Land Office field notes.
 Map of Survey Number 038-1977
 Map of Survey Number 073-1980
 Map of Survey Number 040-1982
 Union County remonumentation records.

BASIS OF BEARING

Record bearing as recorded from the NE corner of Section 15 to the North one Quarter of Section 15, on Map of Survey 040-1982 as filed in the office of the Union County Surveyor.

SCALE: 1" = 500'

UNION COUNTY SURVEYOR
 Date Received 7-26-94
 Date Filed 7-26-94
 By R. ROBINSON, DEPUTY
 File No. 034-1994

BAGETT-GRIFFITH & ASSOCIATES
 LaGrande, Oregon
 Map of Survey
 Section 15
 Township 1 North, Range 38 East
 Willamette Meridian
 UNION COUNTY, OREGON

SURVEYED FOR	UNION COUNTY SURVEYOR	
SURVEYED BY	dig	June, 1994
Scale: 1" = 500'	Drawn by: Lucy	July, 1994