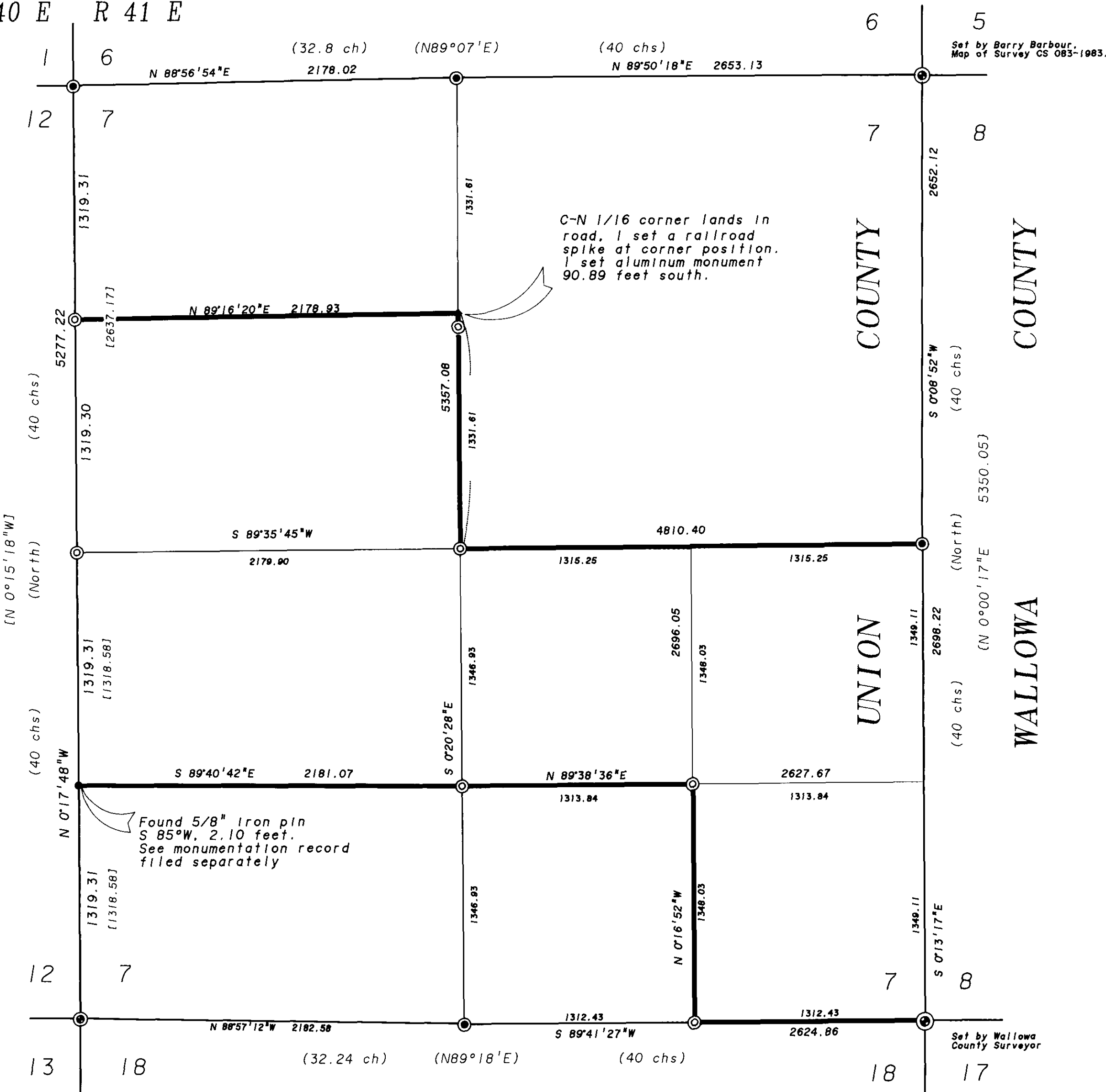


Found fence corner, fences N-E-S-W, and a mound of stone, 5319 feet north of the corner to sections 6 and 7.

T 1 N
R 40 E R 41 E



Set by James Hambleton
Map of Survey 95-74.

Set by Barry Barbour,
Map of Survey CS 083-1983.

Set by Wallowa
County Surveyor

BASIS OF BEARING

Solar observations taken at a point
2483 feet North and 110 feet East from
the N.E. corner of Section 7, T 1 N, R 41 E.
SCALE: 1" = 500'



LEGEND

- ⊙ Found monument set by others, as noted.
- ⊙ Found evidence of original corner, set 2 1/2" X 30" aluminum monument, see Monumentation records filed separately.
- ⊙ Set 2 1/2" X 30" aluminum monument by survey. See monumentation records filed separately.
- () GLO record bearing and distance.
- [] Hambleton record bearing and distance.
- () Barbour record bearing and distance.

NARRATIVE

This survey was made at the request of Steve Gurnsey to subdivide the section and monument the interior corners as shown. I found the controlling corners as shown. The NW corner of the section was found and used by Hambleton in 1974, Map of Survey 95-74. I found the mound of stone, did not identify the charred post. I also found a very old fence corner 5319 feet north. There are fences out in all four directions. There is a mound of stone at the fence corner. I accepted Hambleton's mound as the corner to sections 1-6-7-12. I subdivided the section in accordance with the laws of The State of Oregon and the Bureau of Land Management Manual of Surveying Instructions 1973. I monumented the corners as hereon shown and recorded the information on monumentation forms filed separately. I found no unusual conditions in this survey.

REGISTERED
PROFESSIONAL
LAND SURVEYOR

David Griffith
OREGON
JULY 10, 1984
DUANE I. GRIFFITH
644

Renewal Date: June 30, 1994

HISTORY of SURVEYS

Range line surveyed by William O'Dell under
GLO Contract No. 120, Dated May 27, 1867.
Roll number R-70.

Township subdivided by Henry Meldrum under
GLO Contract No. 450, Dated June 11, 1882.
Roll number R-279.

Range line was retraced by James Hambleton
in 1974, Map of Survey 95-74.

The East line of section 7 was retraced by
Barry Barbour in 1983, Map of Survey CS 083-1983.

REFERENCE MATERIAL

- General Land Office Survey Notes
- Union County Map of Survey No. 95-74.
- Wallowa County Map of Survey No. CS 083-1983
- Wallowa County monumentation records.
- Union County monumentation records.

UNION COUNTY
3-10-94
3-17-94
By *David Griffith*
013-1994

BAGETT-GRIFFITH & ASSOCIATES

LaGrande, Oregon
Map of Survey
Amendment to Map of Survey No 002, 1994
Subdivision of Section 7,
Twp 1 N, Rng 41 E,
Willamette Meridian
UNION COUNTY, OREGON

SURVEYED FOR	BOISE CASCADE CORP.	
SURVEYED BY	dig	Jan. 1994
Scale: 1" = 500'	Drawn by: Lucy	Mar. 1994