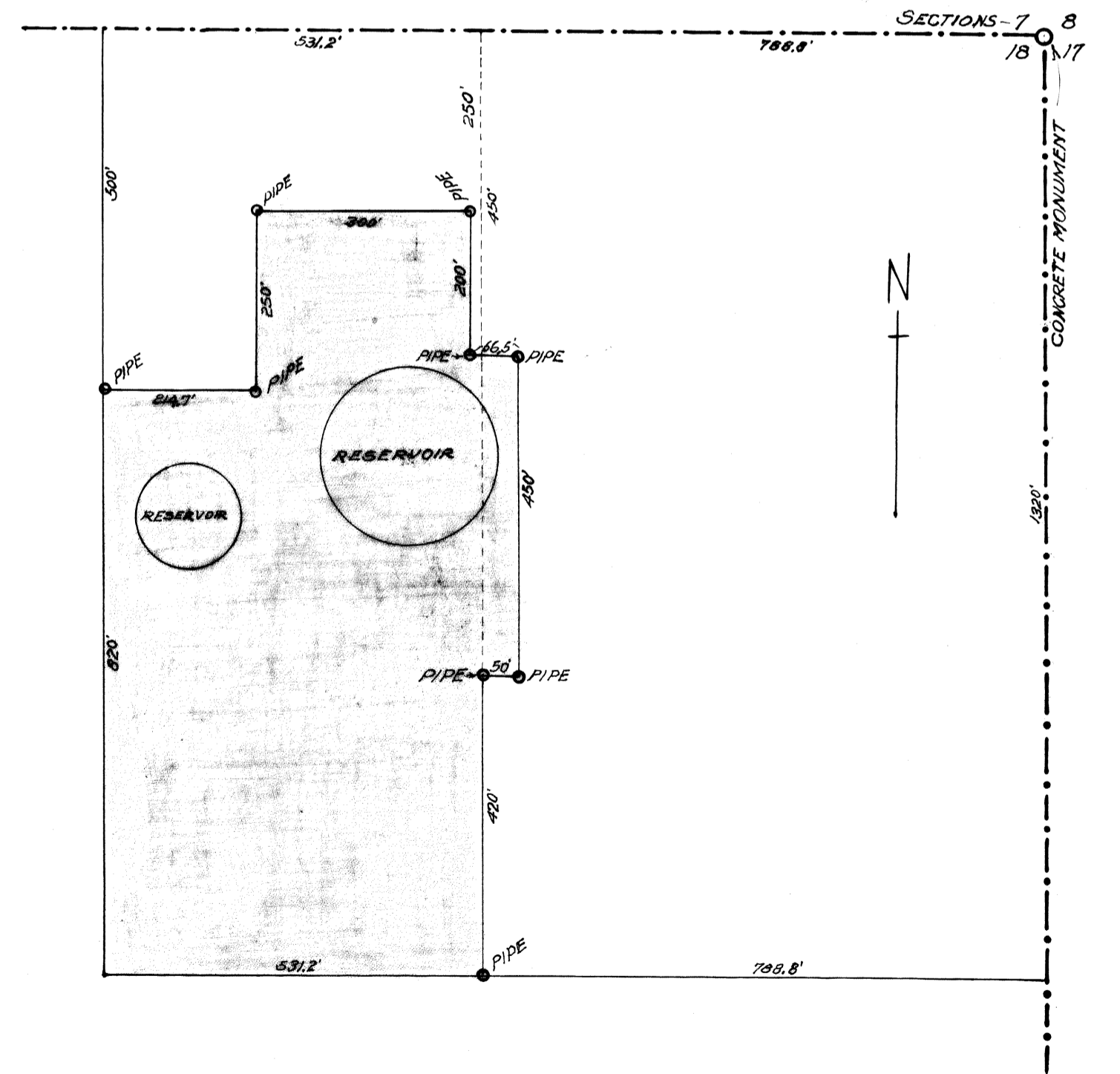


NE 1/4 SECTION 18. T. 3 S. R. 38 E. W. M.  
 SHOWING LAND OWNED BY CITY  
 LA GRANDE. OREGON.



UNION COUNTY  
 SURVEYOR

Date Received 2-25-94  
 Date Filed 4-28-94  
 By R. ROBINSON, DEPUTY  
 File No. 010-1994

SCALE 1"=200'