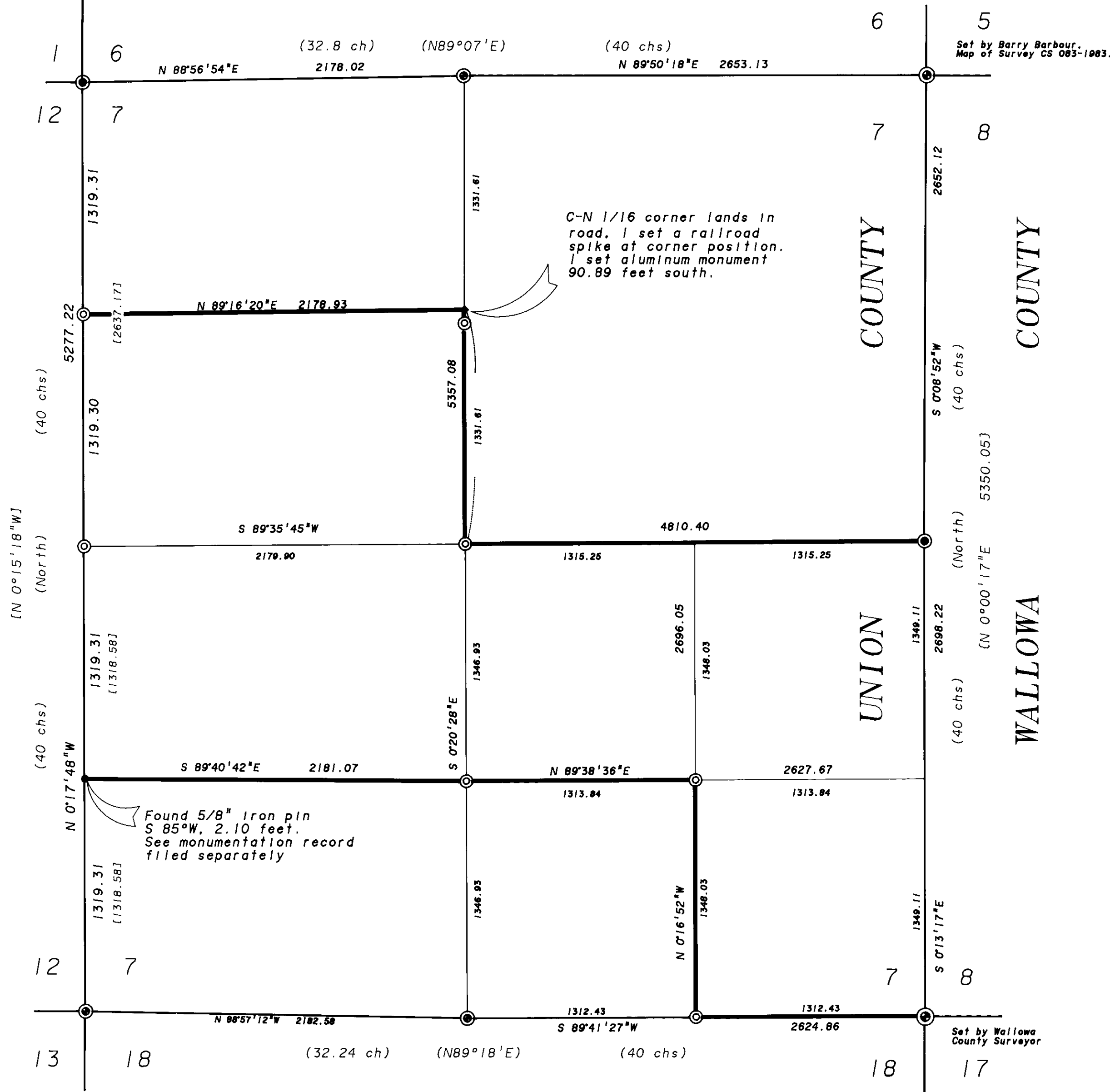


Found fence corner, fences N-E-S-W, and a mound of stone, 5319 feet north of the corner to sections 6 and 7.

T 1 N  
R 40 E R 41 E



Set by James Hambleton  
Map of Survey 95-74.

Set by Barry Barbour,  
Map of Survey CS 083-1983.

Set by Wallowa  
County Surveyor

**REFERENCE MATERIAL**

General Land Office Survey Notes  
Union County Map of Survey No. 95-74.  
Wallowa County Map of Survey No. CS 083-1983  
Wallowa County monumentation records.  
Union County monumentation records.

**NARRATIVE**

This survey was made at the request of Steve Gurnsey to subdivide the section and monument the interior corners as shown. I found the controlling corners as shown. The NW corner of the section was found and used by Hambleton in 1974, Map of Survey 95-74. I found the mound of stone, did not identify the charred post. I also found a very old fence corner 5319 feet north. There are fences out in all four directions. There is a mound of stone at the fence corner. I accepted Hambleton's mound as the corner to sections 1-6-7-12. I subdivided the section in accordance with the laws of The State of Oregon and the Bureau of Land Management Manual of Surveying Instructions 1973. I monumented the corners as hereon shown and recorded the information on monumentation forms filed separately. I found no unusual conditions in this survey.

**LEGEND**

- ⊙ Found monument set by others, as noted.
- ⊙ Found evidence of original corner, set 2 1/2" X 30" aluminum monument, see Monumentation records filed separately.
- ⊙ Set 2 1/2" X 30" aluminum monument by survey. See monumentation records filed separately.
- ( ) GLO record bearing and distance.
- [ ] Hambleton record bearing and distance.
- ( ) Barbour record bearing and distance.

REGISTERED  
PROFESSIONAL  
LAND SURVEYOR  
*David Hipp*  
OREGON  
JULY 10, 1964  
DUANE I. GRIFFITH  
644  
Renewal Date: Dec. 31, 1994

**HISTORY of SURVEYS**

Range line surveyed by William O'Dell under GLO Contract No. 120, Dated May 27, 1867. Roll number R-70.

Township subdivided by Henry Meldrum under GLO Contract No. 450, Dated June 11, 1882. Roll number R-279.

Range line was retraced by James Hambleton in 1974, Map of Survey 95-74.

The East line of section 7 was retraced by Barry Barbour in 1983, Map of Survey CS 083-1983.

UNION COUNTY  
SURVEYOR  
1-20-94  
3-17-94  
By *Lucy Tolson*  
File No. 002-1994

BAGETT-GRIFFITH & ASSOCIATES  
LaGrande, Oregon  
Map of Survey  
Subdivision of Section 7,  
Twp 1 N, Rng 41 E,  
Willamette Meridian  
UNION COUNTY, OREGON  
SURVEYED FOR BOISE CASCADE CORP.  
SURVEYED BY *dlg* Jan. 1994  
Scale: 1" = 500' Drawn by: *Lucy* Feb. 1994