

**NARRATIVE**

A plat prepared by surveyor C. M. Foster titled "Plan of the Townsite of North Powder" was recorded with Union County clerk on September 1, 1881. The original dedication plat however, was filed October 1, 1885 with the county clerk. The earlier map shows lot dimensions which are lacking on the official version.

Enough original street monumentation has been recovered to verify by survey that those lots lying Westerly of "B" Street were intended to measure 53 feet frontage along First Street through Fifth Street.

This survey in Block 31 and Block 32 included searches for original monumentation that would provide information for the lots lying between "B" Street and the easterly city limits line.

An iron pipe at the intersection of "A" and First Streets was found lying under the ground surface. It had apparently been displaced during sewer line construction. No other original monuments along "A" Street or the Easterly line of the city limits were recovered. Fence corners at Second and "A" Streets and at the approximate Easterly line of city limits at Second Street, a portion of sidewalk at Second and "A" Streets, and a found 1/4-inch square bolt at the approximated location of the Northeast corner of Block 15 were all tied to and analyzed for possibility these items could be of some value in determining the original locations of "A" Street and the Easterly line indicated on the original plat. None were deemed authentic and were rejected.

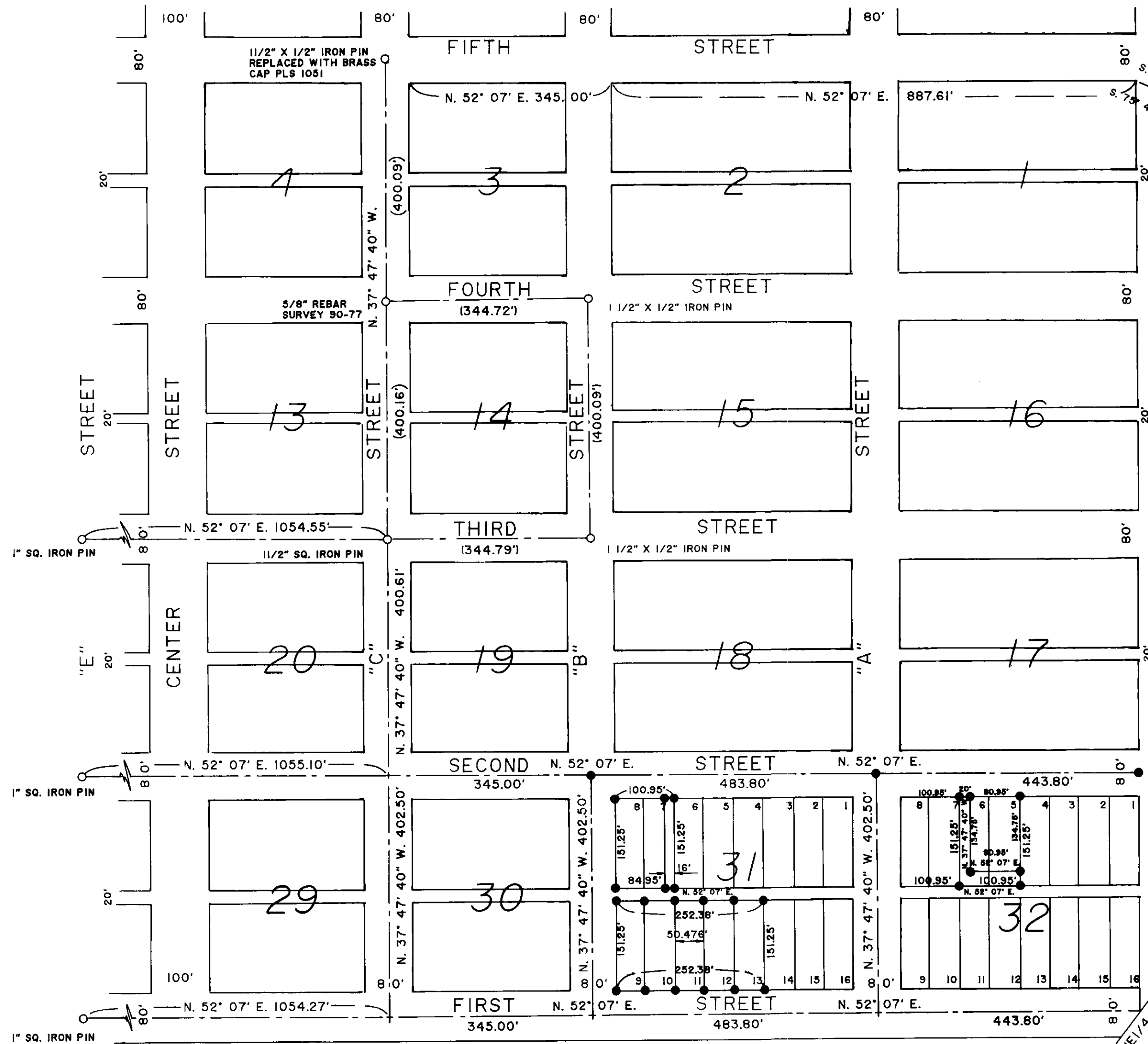
The original plat shows the Northeast corner of Block 1 bears S. 75° 20' W., 15.00 chains from the Northeast corner of Section 22, T. 6 S., R. 39 E., W.M. I have computed this block corner location by bearing-distance method. The bearing along the Northerly line of Blocks 1 and 2 is N. 52° 07' E., and the distance of 15.00 chains is from the found pipe marking the section corner location. The bearing of this tie inverts S. 75° 47' 08" W., using this survey meridian. The distance from the Northwest corner of Block 2 to the Northeast corner of Block 1 is then 887.61 feet. I have evenly divided the net sum of block distances of 807.61 feet by the 16 lot frontages in the two blocks. Each lot is 50.476 feet wide, assuming the Easterly city boundary is parallel to the found monuments along "C" Street.

I believe this combination of original plat section corner tie and the available found monumentation reestablishes the subject parcels, as nearly as now possible, and according to the subdivider's intent.

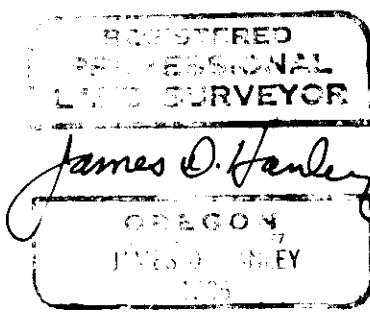
Barry B. Barber has monumented the intersections of Fourth and "A" Streets and Fifth and "A" Streets, and several others. He had the original monumentation along "B" and "C" Streets which consisted of hand-forged iron stakes, which he removed for their antique value, and replaced them with his own brass cap iron pipes. I assume Barber's replacement locations of the original monument are identical to those removed.

Survey was performed for Bob Chapek in Blocks 31 and 32 and for Jesan McKinney in Block 31 for the purposes of marking on the ground the corners of the various lots within those blocks.

Additional monumentation has subsequently been established on 2nd Street centerline opposite the Easterly city limits and at the intersections with "A" and "B" Street centerlines to facilitate further townsite subdivisional locations lying Easterly of "B" Street.



EAST LINE NE 1/4 SECTION 22, T. 6 S., R. 39 E., W.M.



EXP. 12-31-'93

BASIS OF BEARING:  
THIRD ST. BETWEEN 1<sup>ST</sup> & 2<sup>ND</sup> STS BEARS N. 52° 07' E.

**UPON COUNTY**  
SURVEYOR

Date Received 9/23/93  
Date Filed 9/29/93  
By James O. Hanley  
File No. 043-1993

**LEGEND**

- Found original monument or other as noted
- Set 5/8" x 30" rebar with plastic cap mkd. "HANLEY ENGR. PLS 1206"
- ( ) Record data Survey 90-77

Surveyed August 20, 1990 to August 5, 1993

**MAP OF SURVEY**  
T. 6 S., R. 39 E., W.M. SECTION 22  
IN BLOCKS 31 AND 32  
NORTH POWDER, OREGON.

SCALE 1" = 150'

HANLEY ENGINEERING  
BAKER, OREGON.

Survey Number 043-1993