

SURVEY NARRATIVE

THE PURPOSE OF THIS SURVEY WAS TO ESTABLISH THE CENTER ONE-QUARTER CORNER, THE SOUTHWEST CORNER, THE SW 1/16, C-C S 1/16, AND THE W 1/16 OF SECTION 9, T4S, R38E, W.M., UNION COUNTY, OREGON.

THE SURVEY WAS KEPT IN COMPLIANCE AS APPLICABLE TO OREGON STATE LAWS AS WELL AS THE PRINCIPLES AND PRACTICES AS SET FORTH IN THE BLM PUBLICATIONS "RESTORATION OF LOST OR OBLITERATED CORNERS AND SUBDIVISIONS OF SECTIONS" AND "THE MANUAL OF INSTRUCTIONS".

OUR RESEARCH CONSISTED OF OBTAINING ALL NECESSARY DESCRIPTIONS OF ADJOINING LAND AS THEY PERTAIN TO THE COMMON BOUNDARIES, IN ORDER TO DETERMINE IF CONFLICTS OCCUR. WE FOUND NO CONFLICTS.

EXTENSIVE ON-THE-GROUND SEARCH TO OBTAIN EVIDENCE LEFT BY PREVIOUS SURVEYS WITH THE UTMOST PROFESSIONAL CARE WAS EXECUTED AND EVALUATED. THE AREA HAS BEEN LOGGED SEVERAL TIMES IN THE PAST 103 YEARS BY DIFFERENT LOGGING COMPANIES. SOME ORIGINAL EVIDENCE WAS FOUND AND ACCEPTED. NUMEROUS BLAZES AND HATCH MARKS WERE FOUND FROM LOGGING, PRIVATE AND USFS.

THE POSITION OF EACH CORNER WAS ESTABLISHED OR TIED AS PART OF A CLOSED TRAVERSE WITH REGARDS TO MEET POSITIONAL TOLERANCE REQUIREMENTS.

MONUMENTATION THEN ESTABLISHED, RE-ESTABLISHED OR PERPETUATED CORNERS AS SHOWN HEREON.

THE OBLITERATED 1/4 CORNER OF SECTIONS 8 AND 9 WAS RE-ESTABLISHED BY SINGLE PROPORTIONATE MEASUREMENT BETWEEN TWO FOUND SECTION CORNERS. WE ALSO CONSIDERED THE ORIGINAL GLO SURVEY TOPOGRAPHIC CALLS ALONG THIS HEAVILY LOGGED SECTION LINE.

THE 1/4 CORNER OF SECTIONS 4 AND 9 WAS LOST. THE AREA HAD BEEN HEAVILY LOGGED OVER THE YEARS WITH TRACES OF SKID ROADS NETWORKING THROUGHOUT THE AREA. NUMEROUS HATCH AND BLAZE MARKS RAN INTO THE GENERAL VICINITY, NOT ALL WERE CONSISTENT IN THEIR EAST-WEST DIRECTION, THUS INDICATING THE GLO 1/4 CORNER WAS A CAUSE OF CONFUSION THROUGHOUT THE YEARS. THE OLD EAST-WEST FENCE LINES WERE AT TIMES PARALLELING OTHER OLD EAST-WEST FENCE LINES. POSSIBLE BEARING TREES DID NOT FIT RECORD. I FELT BARR DID NOT RECORD THE CORRECT INFORMATION IN THE ORIGINAL NOTES. AT THE TIME THEY WERE SURVEYING IS WAS IN NOVEMBER AND THE WEATHER WAS PROBABLY BECOMING SEVERE AT THAT TIME IN HISTORY.

WE THEN SEARCHED, UNSUCCESSFULLY, FOR THE SECTION CORNER OF 3,4,9 AND 10 WITHOUT SUCCESS. THIS CORNER IS ON THE EASTERLY SIDE OF A RIDGE WITH SKID ROADS, OLD AND NEW, ALONG THE EAST-WEST SECTION LINE.

AFTER CAREFUL ANALYSIS OF THE SITUATION I HELD THE RECORD BEARING AND DISTANCE, BEING N89°47'E A DISTANCE OF 2645.94 FEET (40.09 CHAINS) TO RE-ESTABLISH THIS ONE-QUARTER CORNER. DOING SO THE CALLS TO TOPOGRAPHIC FEATURES (IE: RIDGE) WERE WITHIN A REASONABLE TOLERANCE OF RECORD.

NO GEODETIC CONTROL WAS AVAILABLE WITHIN 1/2 MILE FORM THIS SURVEY.

NO UNUSUAL CONDITIONS WERE ENCOUNTERED OTHER THAN NOTED ABOVE AND THIS CONCLUDES THIS SURVEY NARRATIVE.

BASIS OF BEARINGS

N 89°44'05"E - AS THE SECTION LINE BETWEEN SECTIONS 9 AND 16, WAS DETERMINED FROM THE MONUMENTS SHOWN AS FOUND.

REFERENCES

(R) GLO CONTRACT 388, MAY 7, 1881, W.B. BARR TOWNSHIP LINES, SUBDIVISIONS, RETRACING FIELD SURVEY: OCTOBER & NOVEMBER 1881

(1) CERTIFIED RECORD OF LAND CORNER MONUMENTATION

(2) NUMEROUS FACETS OF MISC DOCUMENTATION ACQUIRED

(3) TESTIMONIES AND LOCAL HISTORY

(4) G. VOELZ PLS 381

LEGEND

⊙ FOUND MONUMENT

⊙ FOUND ORIGINAL EVIDENCE. SET 2-3/4" X 30" GALV. PIPE & 2-1/2" ALUMINUM CAP MARKED & WITNESSED AS SHOWN HEREON, IN M.O.S.

⊙ PROPORTIONAL POSITION. SET 2-7/8" X 30" GALV. PIPE & 2-1/2" ALUMINUM CAP MARKED & WITNESSED AS SHOWN HEREON, IN M.O.S.

● SET 5/8" X 30" REBAR WITH 1-1/2" ALUMINUM CAP MARKED AS SHOWN HEREON

() RECORD DATA

(R) RECORD DATA AS PER GLO CONTRACT # 388 FIELD DATE MAY 7, 1881, BY W. B. BARR, D.S.

(M) MEASURED DATA

(C) CALCULATED DATA, POSITION NOT ESTABLISHED ON GROUND

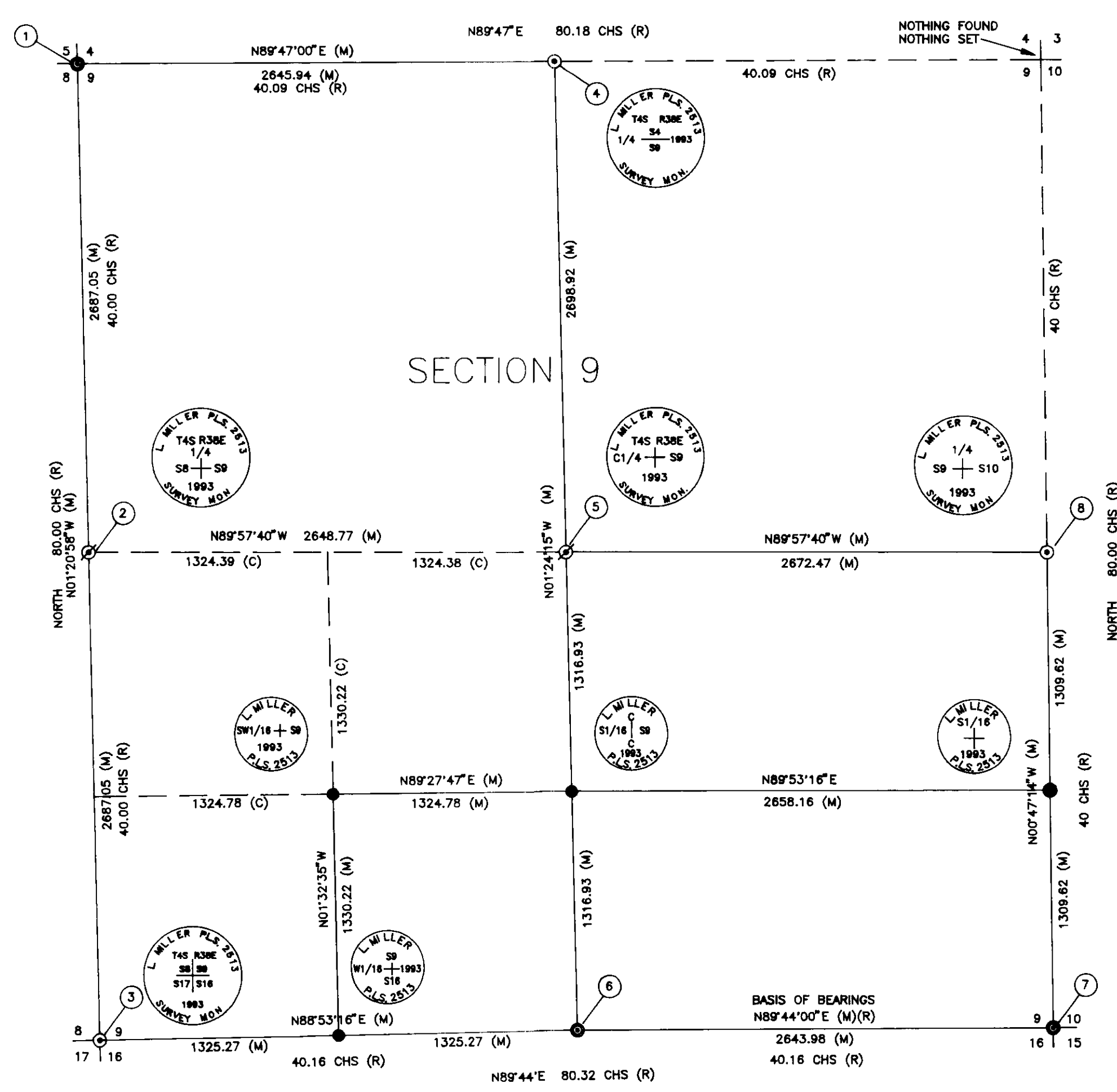
CHS CHAINS (1 CHS = 66')

M.O.S. MOUND OF STONE

NOTE: FURTHER INFORMATION ON CORNERS IS FILED WITH UNION CO. SURVEYOR ON CORNER RECORDATION FORMS.

- 1 SECTION CORNER 4,5,8,9
FOUND 2" PIPE WITH 2" ALUMINUM CAP MARKED "T4S,R38E,S5,S4,S8,S9,PLS1099,1984", FROM WHICH:
A 13" ENGLEMANN SPRUCE BEARS N02° 10'E 17.9 FT DIST (N04° E)
A 17" ENGLEMANN SPRUCE BEARS N78° 34'W 28.5 FT DIST (N78° W)
A 19" ENGLEMANN SPRUCE BEARS S37° 12'W 8.7 FT DIST (S55° W)
A 10" ENGLEMANN SPRUCE BEARS S30° 43'E 13.3 FT DIST (S28° E)
BEARINGS TO FOUND BRASS WASHER MARKED "LS1099" AT LOWER BLAZE.
BLAZES HEALING OVER SCRIBING ON BOTH UPPER AND LOWER BLAZES.
- 2 1/4 SECTION CORNER 8/9
NO EVIDENCE OF ORIGINAL CORNER REMAINS.
SET MONUMENT AS SHOWN HEREON AT POSITION DETERMINED BY SURVEY, FROM WHICH:
MARKED BEARING TREES:
A 8" LODGEPOLE PINE BEARS S07° 55'E 14.0 FT DIST
A 19" PINE BEARS N44° 31'W 63.3 FT DIST
SET 1/2" BRASS DISC MARKED "PLS2513" IN A 4" X 4" BLAZE ON BT'S.
SET REFERENCE ACCESSORY:
5/8" X 30" REBAR, 28" IN GROUND WITH A 1-1/2" ALUMINUM CAP MARKED "L.MILLER PLS2513", BEARS N49° 19'15"W 20.33 FT DIST.
- 3 SECTION CORNER 8,9,16,17
FOUND CHARRED REMAINS OF ORIGINAL STAKE, 1 FOOT MORE OR LESS BELOW SURFACE. NO BT'S FOUND.
AT POSITION OF FOUND REMAINS, SET MONUMENT AS SHOWN HEREON, FROM WHICH:
MARKED BEARING TREES:
A 8" SPRUCE BEARS N38° 13'W 56.7 FT DIST
A 16" FIR BEARS N85° 24'W 78.5 FT DIST
A 4" TAMARACK BEARS S39° 06'E 55.5 FT DIST
A 7" SPRUCE BEARS N57° 51'E 61.5 FT DIST
SET 1/2" BRASS DISC MARKED "PLS2513" IN A 4" X 4" BLAZE ON BT'S.
SET REFERENCE ACCESSORY:
5/8" X 30" REBAR, 28" IN GROUND WITH A 1-1/2" ALUMINUM CAP MARKED "L.MILLER PLS2513", BEARS N48° 12'27"W 39.90 FT DIST.
- 4 ONE-QUARTER SECTION CORNER 4/9
AT POSITION DETERMINED BY SURVEY SET MONUMENT AS SHOWN HEREON, FROM WHICH:
A 30" WHITE FIR BEARS N50° 42'W 12.1 FT DIST.
A 26" FIR BEARS N81° 20'E 21.6 FT DIST.
SET 1/2" BRASS DISC MARKED "PLS2513" IN A 4" X 4" BLAZE ON BT'S.
- 5 CENTER 1/4 CORNER
AT POSITION DETERMINED BY SURVEY SET MONUMENT AS SHOWN HEREON, FROM WHICH:
A 14" FIR BEARS N11° 37'E 38.9 FT DIST.
A 20" FIR BEARS S88° 55'E 22.2 FT DIST.
SET 1/2" BRASS DISC MARKED "PLS2513" IN A 4" X 4" BLAZE ON BT'S.
- 6 ONE-QUARTER SECTION CORNER 9/16
FOUND 2" PIPE WITH BRASS CAP AS SHOWN HEREON, FROM WHICH:
A 14" TAMARACK BEARS N06° 26'W 21.5 FT DIST.
(PER VOELZ PLS381, SEPT 1973, N4° W 21.5 FT DIST)
A 13" WHITE FIR BEARS S17° 48'W 17.5 FT DIST.
(PER VOELZ PLS381, SEPT 1973, S22° W 17.4 FT DIST)
SCRIBING VISIBLE, BUT BLAZE IS CLOSING OVER SCRIBING.
BT SIGNS FOUND ON FACE OF BT'S PER VOELZ RECORD.
FOUND OLD ROTTED DOWN BLACK PINE, SCRIBING ROTTED AWAY.
- 7 SECTION CORNER 9,10,15,16
FOUND A 2" IRON PIPE WITH 2-1/2" BRASS CAP MARKED:
"COR,T4S,R38E,S9,S10,S16,S15, ORE LIC. 381, 1973" FROM WHICH:
A 15" RED FIR BEARS N25° 34'W (N25° 34'W) 116.2 FT DIST. BLAZE HEALED.
A 13" WHITE FIR BEARS S17° 56'W (S21° 30'W) 13.5 FT DIST, BLAZE HEALED.
A ROTTED STUMP (GLO) N'E'LY 4 FT. DIST. (N45° W 6 LKS. DIST)
A ROTTED STUMP (GLO) N05° 08'W 22.4 FT DIST. (N5°E 34 LKS. DIST)
ALL BT'S HAD BT SIGNS NAILED TO FACES.
- 8 ONE-QUARTER SECTION CORNER 9/10
FOUND ORIGINAL 16"X12"X8" BASALT ROCK, NO MARKS VISIBLE, 4" BELOW GROUND IN OLD E-W BARBED FENCE LINE. FROM WHICH:
A ROTTED PINE (GLO) STUMP 19" DIAM BEARS S36° 34'W 16.5 FT DIST.
A ROTTED FIR (GLO) STUMP 45" DIAM BEARS S61° 56'E 31.4 FT DIST.
SET AT POSITION OF STONE, A MONUMENT AS SHOWN HEREON, FROM WHICH:
A 18" FIR BEARS N83° W 23.5 FT DIST.
A 10" FIR BEARS N80° E 31.8 FT DIST.
SET 1/2" BRASS DISC MARKED "PLS2513" IN A 4" X 4" BLAZE ON BT'S.
ALSO SET MARKED 1/2" BRASS DISC AT BASE OF ROTTED GLO STUMPS.

SCALE: 1"=600'



DRAWN BY: PAM	MILLER LAND SURVEYING CO. - Professional Land Surveying - 1005 1/2 NW GALVESTON AVE. BEND, OREGON 97701 (503) 389-4116	RECORD OF SURVEY RETRACEMENT OF SECTION 9, T4S, R38E, W.M., UNION COUNTY, OREGON FOR: BOISE CASCADE TIMBER AND WOOD PRODUCTS
CHECKED BY: LLM		
DATE: 8/17/93		
SCALE: 1"=600'		
PROJECT: 174-92		

UNION COUNTY
 9/22/93
 Date Filed 9/29/93
 By: Susan T. Black
 File No: 042-1993

REGISTERED PROFESSIONAL LAND SURVEYOR
 Linda Lee Miller
 OREGON JULY 25, 1991
 LINDA LEE MILLER 2513
 EXPIRATION DATE: 12-31-94