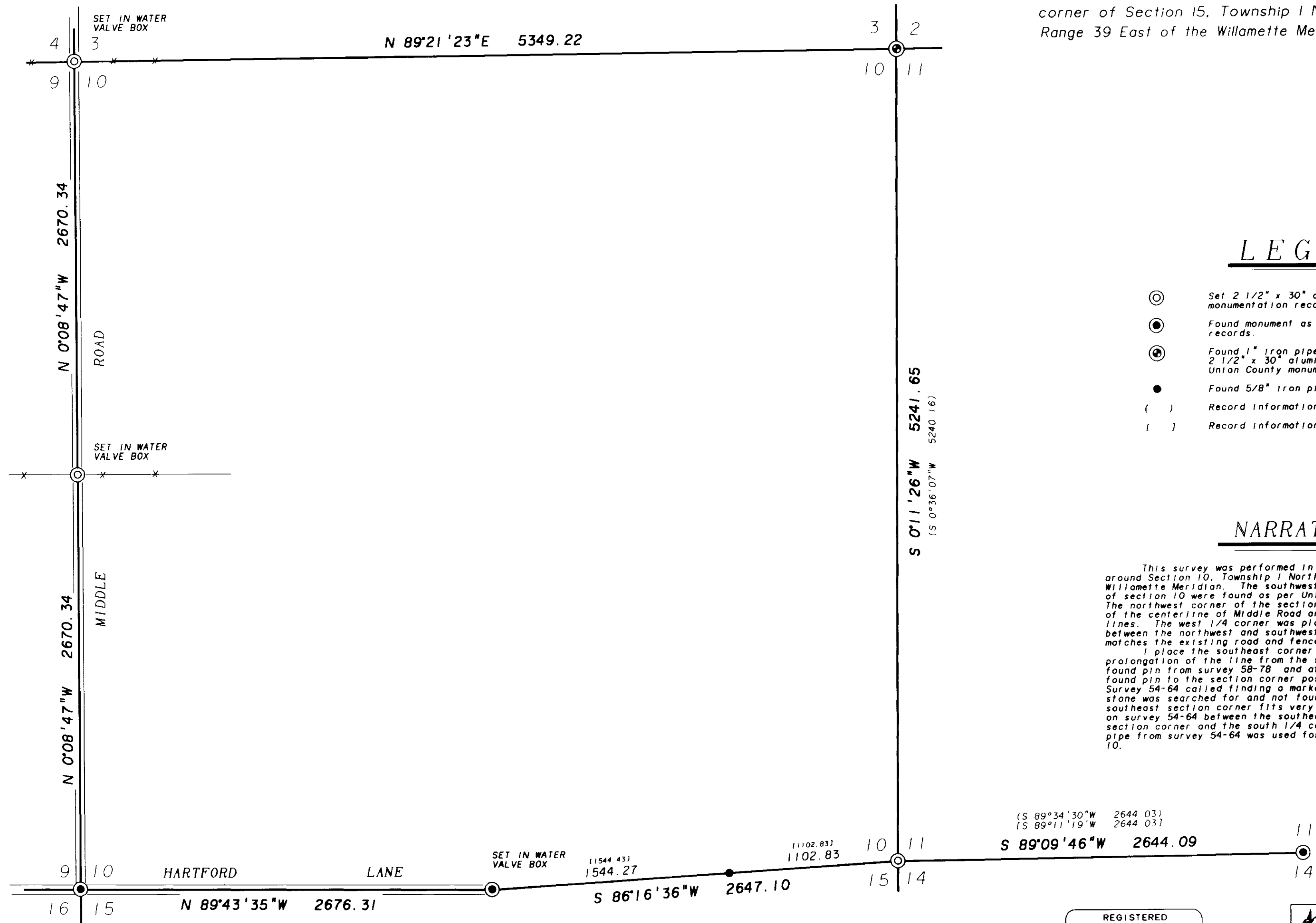


BASIS of BEARING

Solar observation taken at the North quarter corner of Section 15, Township 1 North, Range 39 East of the Willamette Meridian.



LEGEND

- ⊙ Set 2 1/2" x 30" aluminum pipe see Union County monumentation records filed separately.
- Found monument as per Union County monumentation records.
- ⊕ Found 1" iron pipe as per survey 54-64, placed 2 1/2" x 30" aluminum pipe over found pipe, see Union County monumentation records filed separately.
- Found 5/8" iron pin (rebar) as per survey 35-78.
- () Record information from survey 54-64.
- [] Record information from survey 35-78.

NARRATIVE

This survey was performed in order to show the monumentation around Section 10, Township 1 North, Range 39 East of the Willamette Meridian. The southwest corner and the south 1/4 corner of section 10 were found as per Union County monumentation records. The northwest corner of the section was placed at the intersection of the centerline of Middle Road and the easterly-westerly fence lines. The west 1/4 corner was placed at proportionate distance between the northwest and southwest section corners. This position matches the existing road and fence lines very well. I place the southeast corner of this section on the prolongation of the line from the south 1/4 corner through the found pin from survey 58-78 and at the record distance from the found pin to the section corner position as per survey 35-78. Survey 54-64 called finding a marked stone at this corner. The stone was searched for and not found. This position for the southeast section corner fits very well with the relationship shown on survey 54-64 between the southeast section corner the northeast section corner and the south 1/4 corner of section 11. The found pipe from survey 54-64 was used for the northeast corner of section 10.

REFERENCE MATERIAL

UNION COUNTY MONUMENTATION RECORDS
UNION COUNTY SURVEYS
54-64
35-78
030-1993

UNION COUNTY SURVEYOR
Data Received 9-8-93
Date Filed 9-8-93
By R. Robinson, Deputy
File No. 039-1793

REGISTERED PROFESSIONAL LAND SURVEYOR
Gregory T. Blackman
GREGORY T. BLACKMAN
991
Renewal Date: Dec. 31, 1993

BAGETT-GRIFFITH & ASSOCIATES LaGrande, Oregon Map of Survey		
SECTION 10, TOWNSHIP 1 NORTH, RANGE 39 EAST OF THE WILLAMETTE MERIDIAN.		
SURVEYED FOR	UNION COUNTY	
SURVEYED BY	GTB	8-93
Scale: 1" = 500'	Drawn by: JPP	8-93

SURVEY 039-1993