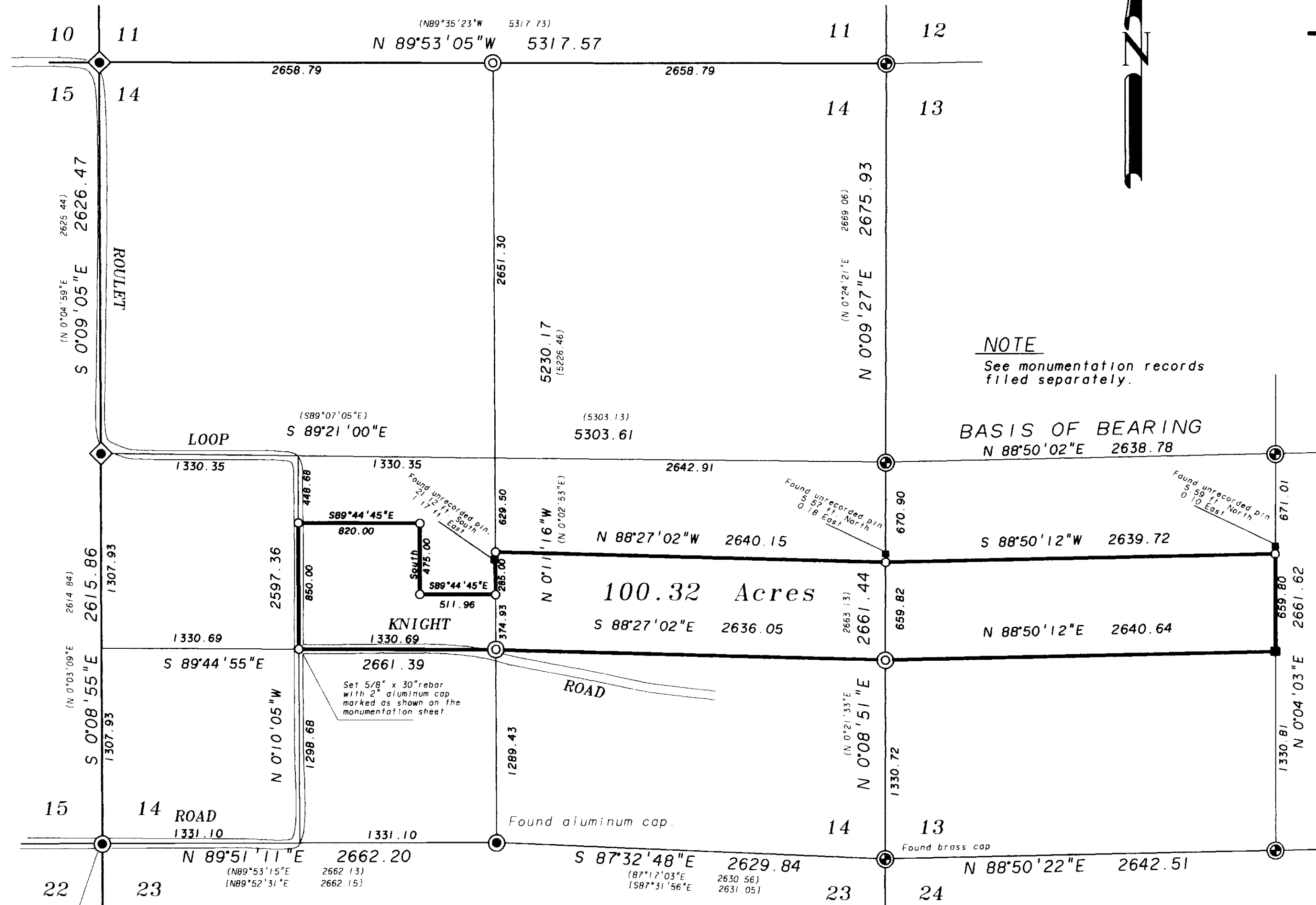


T 1 N R 40 E



BASIS of BEARING

Survey Number 021-1984. Recorded bearing from the center 1/4 corner to the west 1/4 corner of section 13.

NARRATIVE

This survey was made at the request of Brian Cullen to locate and mark the lines as shown hereon. In 1974 Jim Hambleton made a survey in this area. Map of Survey Number 095-1974 (95-74). Hambleton located and subdivided section 14. In 1984 Greg Blackman subdivided section 13. Map of Survey Number 021-1984 (21-84). In 1985 B.A. Sutton made a survey in sections 13 and 14, no map of survey was ever filed. In 1992 Jim Hambleton made a survey in which he subdivided section 23. Map of Survey Number 049-1992. In this survey he set the SW corner and the S 1/4 corner of section 14. I retraced Hambleton's survey of section 14 and placed the NW corner, and the West 1/4 corner on the same basis he used, centerline roads and fences. I found a spike at the NW corner I assumed to be his position. I placed the North 1/4 corner at the proportionate position between the NE and NW corners of the section. I subdivided section 14 as shown hereon. On Sutton's unrecorded survey he states, "both parties agree their intentions were to split the property by area." He further states he ran the 1/64th line through the N half of the SW 1/4 of section 13. He also ran a line, to have been "an agreement line" in section 14. I found all the pins set by Sutton, as shown hereon. This survey was not recorded and I find no record of there having been an agreement made and recorded by the parties involved. I find the descriptions of this parcel and the parcel to the north are the same, as to the common line between these parcels. I located this parcel on the basis of these deed descriptions. The descriptions, as written do not divide the properties into equal areas. I found no unusual conditions. The existing fence lines wander from the true location of the property lines. Some of these fences are to be rebuilt on true line. I therefore do not show the existing fence lines on this map.

NOTE
See monumentation records filed separately.

BASIS OF BEARING
N 88°50'02"E 2638.78

100.32 Acres

LEGEND

- ⊙ Found 2-1/2" aluminum cap, or as noted; Survey 021-1984
- Found monument as noted, Survey 049-1992.
- Found unrecorded 5/8" rebar with 2" aluminum cap, see narrative.
- ◆ Set 2-1/2 X 30" aluminum monument based on survey 095-1974.
- ⊙ Set 2-1/2 X 30" aluminum monument
- Set 5/8" X 30" rebar with plastic cap marked "BGA SURVEY MARKER" or as noted.
- () Record bearing and distance, Survey number 095-1974.
- [] Record bearing and distance, Survey number 049-1992.

REFERENCE MATERIAL

DEED RECORDS	MAPS OF SURVEY
Vol. 40 page 566	007-1974 (7-74)
Vol. 41 page 117	095-1974 (95-74)
Vol. 61 page 301	021-1984 (21-84)
	049-1992
MICROFILMS NUMBERS	Unrecorded survey by B.A. Sutton, OPLS 1848 Dated May 1, 1985. Surveyed for Estill Arrand and Thomas Dacus.
114903 122325	
124544 129385	
138437 143669	
147298	

NOTE
See monumentation records filed separately.

REGISTERED PROFESSIONAL LAND SURVEYOR

 OREGON JULY 10, 1984
DUANE I. GRIFFITH
 644
 Renewal Date: Dec. 31, 1993

BAGETT-GRIFFITH & ASSOCIATES
 LaGrande, Oregon
 Map of Survey
 A parcel in Sections 13 and 14 Township 1 North, Range 40 East Willamette Meridian UNION COUNTY, OREGON

SURVEYED FOR	BRIAN CULLEN	
SURVEYED BY	dig	August 1993
Scale: 1" = 600'	Drawn by: Lucy	August 1993

9.3.93
 2/2/93
 Greg Blackman
 037-1993

Map of Survey 037-1993

I did not find the aluminum cap, position is based on the reference pins.