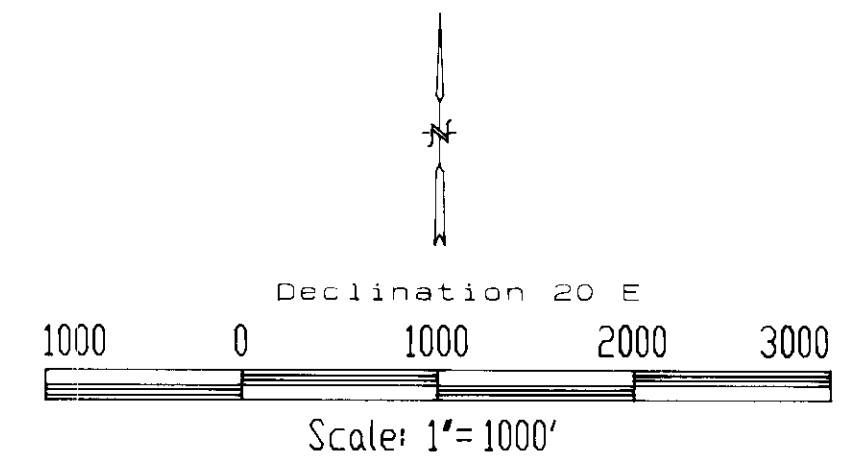


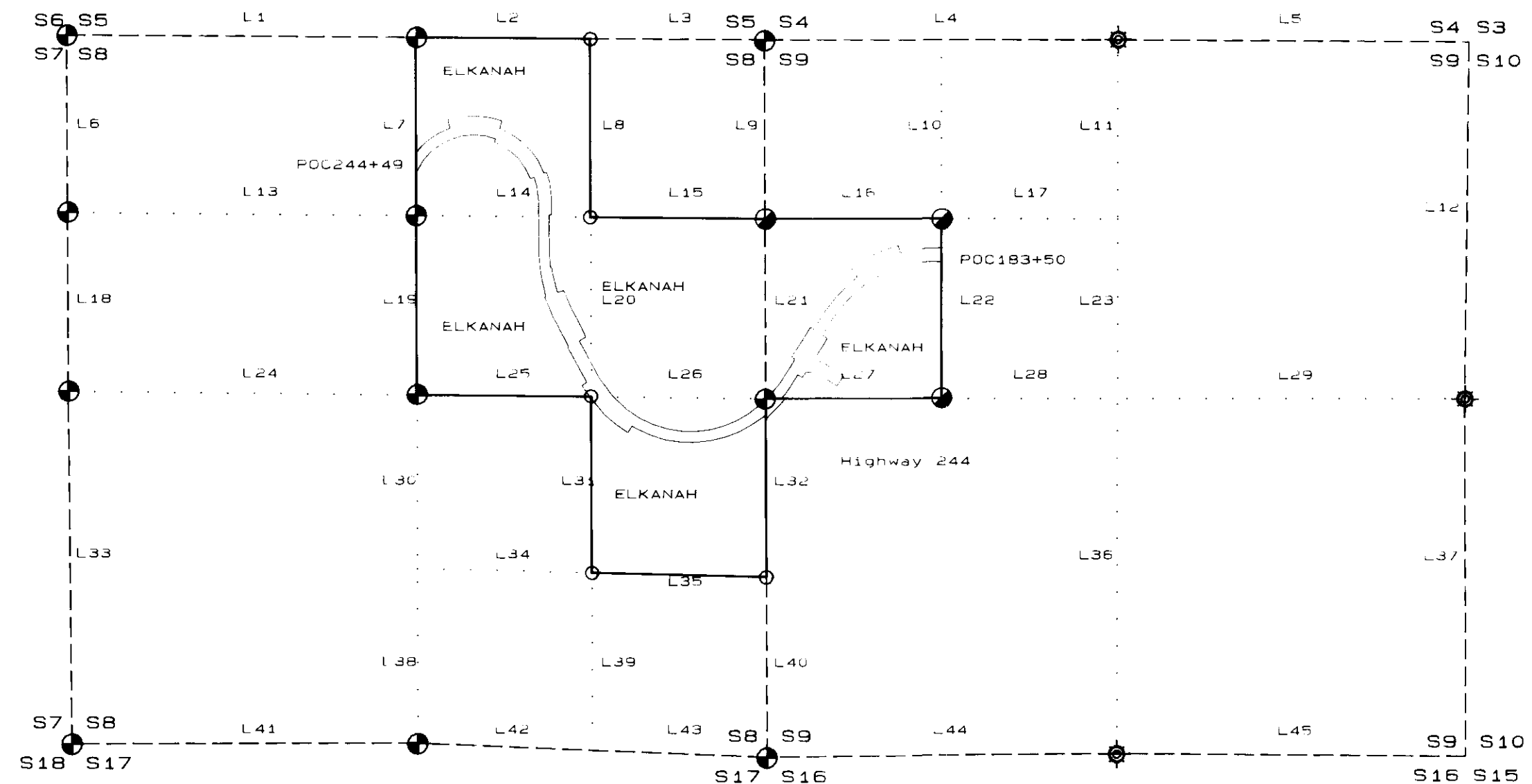
**SYMBOLS:**

- Found 2 1/2" brass or aluminum capped monument meeting requirements of 1973 BLM Manual.
- Found 5/8" rebar with yellow plastic cap stamped LS 1015.
- ⊗ Set 2 1/2" x 30" aluminum monument and marked accessories to state and BLM Manual standards.
- Set 5/8" x 30" rebar with 2" aluminum cap and accessories to state and BLM Manual standards.



**LINE TABLE:**

UNION COUNTY SURVEY 41-88		UNION COUNTY SURVEY 21-89		GLO SURVEY MOORE 1884		
NO.	BEARING	DISTANCE	BEARING	DISTANCE	BEARING	DISTANCE
L45	NOT SURVEYED		NO RECORD		S89 43°E 39.80CH.	
L44	N89 21°44'E	2639.99	NO RECORD		S89 43°E 39.80CH.	
L43	S87 52°04'E	1317.01	S87 29°47'W	1317.045	S87 52°10'E	1316.91
L42	S89 52°04'E	1317.01	S87 29°47'W	1317.045	S87 52°10'E	1316.91
L41	N89 43°32'E	2599.54	NO RECORD		N89 43°25'W	2599.38
L40	N00 22°00'W	1335.10	N00 00°00'E	1334.82	N00 22°40'W	1334.895
L39	NOT SURVEYED		N00 03°20'W	1316.005	NO RECORD	
L38	N00 16°19'W	1297.11	N00 06°44'W	1297.19	N00 15°55'W	1297.135
L37	NOT SURVEYED		NO RECORD		NO RECORD	
L36	N00 02°32'W	2645.31	NO RECORD		N00 00°E 40.00CH.	
L35	S88 44°49'E	1315.15	S88 18°47'E	1315.09	NO RECORD	
L34	NOT SURVEYED		S88 18°47'E	1315.09	NO RECORD	
L33	N00 44°45'W	2629.40	NO RECORD		N00 44°25'W	2629.39
L32	N00 23°50'W	1334.86	N00 00°00'E	1334.83	N00 22°40'W	1334.895
L31	N00 20°21'W	1316.59	N00 03°20'E	1316.005	NO RECORD	
L30	N00 16°19'W	1297.11	N00 06°44'W	1279.19	N00 15°55'W	1297.135
L29	N89 53°36'E	2616.03	NO RECORD		NO RECORD	
L28	N89 53°36'E	1327.76	NO RECORD		NO RECORD	
L27	N89 53°36'E	1327.76	NO RECORD		NO RECORD	
L26	S89 32°32'E	1313.41	S89 07°55'E	1313.40	S89 30°35'E	1313.25
L25	S89 32°32'E	1313.39	S89 07°55'E	1313.40	S89 30°35'E	1313.25
L24	S89 30°27'E	2621.52	S89 07°55'E	2621.45	S89 30°35'E	2621.37
L23	N00 02°32'W	1333.96	NO RECORD		NO RECORD	
L22	N00 12°37'W	1334.43	NO RECORD		NO RECORD	
L21	N00 22°30'W	1334.84	N00 00°00'E	1334.83	N00 22°45'W	1334.925
L20	N00 19°19'W	1333.59	N00 03°20'E	1333.01	NO RECORD	
L19	N00 16°13'W	1333.27	N00 06°44'W	1331.195	N00 15°55'W	1331.31
L18	N00 24°59'W	1325.89	NO RECORD		N00 25°00'W	1325.97
L17	N89 54°48'E	1331.68	NO RECORD		NO RECORD	
L16	N89 54°48'E	1331.68	NO RECORD		NO RECORD	
L15	NOT SURVEYED		S89 12°38'W	1312.075	NO RECORD	
L14	S89 35°07'E	1312.16	S89 12°38'W	1312.075	NO RECORD	
L13	S89 37°34'E	2624.84	NO RECORD		S89 37°40'E	2624.81
L12	NOT SURVEYED		NO RECORD		NO RECORD	
L11	N00 02°32'W	1333.96	NO RECORD		NO RECORD	
L10	N00 12°37'W	1334.43	NO RECORD		NO RECORD	
L9	N00 22°30'W	1334.84	N00 00°00'E	1334.83	N00 22°45'W	1334.925
L8	N00 19°19'W	1333.59	N00 03°20'E	1333.01	NO RECORD	
L7	N00 15°20'W	1331.12	N00 06°44'W	1331.195	N00 15°55'W	1331.31
L6	N 00 25°16'W	1325.86	NO RECORD		N00 25°00'W	1325.97
L5	NOT SURVEYED		NO RECORD		NO RECORD	
L4	N89 56°00'E	2671.19	NO RECORD		S89 49°E 40.05CH.	
L3	S89 39°01'E	1310.90	S89 17°21'W	1310.74	S89 49°E 40.05CH.	
L2	S89 41°32'E	1310.59	S89 17°21'W	1310.74	N89 55°E 19.94CH.	
L1	S89 44°31'E	2628.62	NO RECORD		S89 44°45'W	2628.26
					N89 55°E 39.88CH.	



**Purpose of Survey**

The purpose of this survey was to establish the corners and north and east boundaries of the Elkanah property in the NE quarter of Section 8 and the NW quarter of Section 9. All the necessary corners set by the original GLO survey and Union County surveys 41-88 and 21-89 were found. Steel posts were set on line to provide intervisibility with a minimum of brush clearing between monuments.

**Survey History**

The original subdivision of T.4S., R.35E., W.M. was performed by Rufus Moore in 1884. PLS 1015 surveyed and monumented the Elkanah property in Section 8 and recorded his survey in Union County survey 41-88 in 1888. Section 8 was further subdivided by PLS 699 in 1889. He recorded his survey in Union County survey 21-89.

**Survey Equipment and Method Used**

The equipment used was a Wild System GPS System 200. Corner coordinates were calculated using vectors from a single base station which was a USCGS bench mark near the south quarter corner of Section 9. This data was checked against previous surveys with good closures indicated. Other points were checked by reoccupation. The basis of bearing was taken from Union County survey 21-89 by computing the bearing between the northwest and southwest corners of Section 9. All corner monuments in Section 8 were found and tied. All checked against my survey except the 5/8" rebar with yellow plastic cap at the location for the SE 1/16 of Section 8 which appeared to be about 1 foot south of the correct position.

**HIGHWAY RIGHT-OF-WAY DESCRIPTION**

This property is crossed by Oregon State Highway 244 in an east-west direction. A description of the highway geometry and right-of-way was obtained from the OSHD Office in La Grande. This was compared to the results of this survey and found to fit with no more than a five foot maximum deviation. The results were plotted on this drawing. The approximate corner ties and acreages are given in the tables to the right.

Station	Bearing	Distance
POC183+50	N00 12°37'W	274'
POC200+97	S89 53°36'W	62'
POC201+83	N00 22°42'W	64'
POC215+30	S89 30°30'W	118'
POC217+41	S00 19°23'E	173'
FUT229+83	S89 35°24'E	352'
POC244+49	S00 16°02'E	406'

Acreages Relative to Highway Right-of-Way					
Section	Parcel	Total	North	In R/W	South
8	NW of NE	40.10	25.86	3.66	10.58
8	SW of NE	40.14	5.38	3.27	31.49
8	SE of NE	40.20	39.77	0.43	
8	NE of SE	39.98	4.59	2.97	32.42
9	SW of NW	40.74	17.15	5.10	18.49

REGISTERED PROFESSIONAL LAND SURVEYOR

David L. Haddock

OREGON JULY 12, 1988 DAVID L. HADDOCK 852

UNION COUNTY  
17-29-93  
8-8-93  
Megan J. Blak  
File No. 033-1993

The following Certified Records of Land Corner Monumentation in T.4S., R.35E., W.M., were received from David L. Haddock, Oregon Land Surveyor 0852, with this map of survey to be entered into the official county surveyor records. Corner Index Nos. E11, G13, J11, F9, F10 and G10.

David L. Haddock  
Surveyor & Engineer  
P. O. Box 1574  
Pendleton, OR 97801-0450  
(503) 276-2193

Survey for:  
CAMP ELKANAH  
201.16  
in Union County, Oregon  
Situated in Sections 8 & 9,  
T.4S., R.35E., W.M.

**SURVEYOR'S CERTIFICATE**  
I, David L. Haddock, a registered Professional Land Surveyor in the State of Oregon, hereby certify that this plat and the notes hereon are a correct representation of a survey performed under my direct supervision in accordance with the statutes of the State of Oregon.  
David L. Haddock Oregon License No. 0852

**Union County Surveyor's Certificate:**  
I hereby certify that the Certified Records of Land Corner Monumentation referenced above and this map of survey have been filed in the office of the Union County Surveyor this \_\_\_\_\_ th day of \_\_\_\_\_, 1993.  
For Union County Surveyor

Survey Number 033 - 1993