

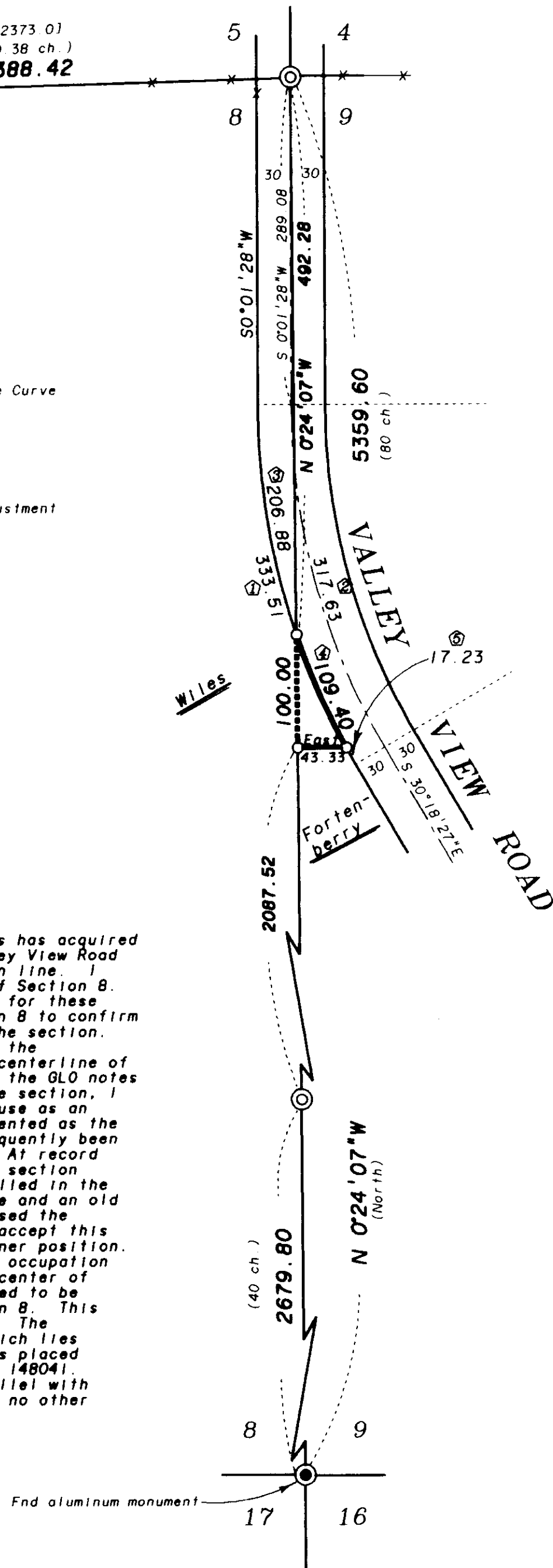
1/4 Corner common to Sections 5 and 8
End brass cap monument

CURVE DATA

- ① Total Curve West R/W
R = 630.00'
Δ = 30°19'55"
L = 333.51'
T = 170.76'
L.C. = 329.63'
S 15°08'29"E
- ② Total Centerline Curve
R = 600.00'
Δ = 30°19'55"
L = 317.63'
T = 162.63'
L.C. = 313.94'
S 15°08'29"E
- ③ Curve N. of Adjustment
R = 630.00'
Δ = 18°48'53"
L = 206.88'
T = 104.38'
L.C. = 205.95'
S 9°22'58"E
- ④ Curve Along Adjustment
R = 630.00'
Δ = 9°56'58"
L = 109.40'
T = 54.84'
L.C. = 109.26'
S 23°45'54"E
- ⑤ Curve S. of Adjustment
R = 630.00'
Δ = 1°34'04"
L = 17.23'
T = 8.62'
L.C. = 17.23'
S 29°31'25"E

NARRATIVE

This survey was done at the request of Bob Wiles. Mr. Wiles has acquired the triangular parcel shown to obtain more frontage on Valley View Road for his parcel. Mr. Wiles original East line is the section line. I searched for the East 1/4 corner and the Northeast corner of Section 8. I find no evidence of the original monuments or accessories for these corners. I also ran West to the North 1/4 corner of Section 8 to confirm the shortage from record distance along the North line of the section. Survey Number 26-70 calls this distance 2373 feet and calls the Northeast corner of the section at the intersection of the centerline of the county road and the East-West fence line. In retracing the GLO notes and the deeds for the parcel in the Northeast quarter of the section, I find that the GLO surveyor calls a corner of John Barnes house as an accessory to the section corner. The Barnes parcel was patented as the North half of the Northeast 1/4 of Section 8, and has subsequently been transferred and occupied as being West of the county road. At record bearing and distance from the intersection position for the section corner, I find no physical remains of the original house called in the notes, however I find a leveled spot, with an old apple tree and an old well in the immediate vicinity. Survey number 26-70 also used the intersection position for the section corner. I therefore accept this position as the best available evidence of the original corner position. This is harmonious to the South, as shown and fits with the occupation lines of the immediate properties. I also ran East to the center of Middle Road, along the existing East-West fence, which proved to be harmonious with position for the Northeast corner of Section 8. This was also used to prove the position on survey number 26-70. The triangular parcel transferred from Fortenberry to Wiles, which lies between the section line and the West right of way line, was placed according to the record dimensions of deed microfilm number 148041. I locate the right of way line at 30 feet West and parallel with the centerline of Valley View Road, as constructed. I find no other unusual conditions on this survey.



BASIS of BEARING

Solar observation taken at the North 1/4 corner of Section 15, Township 1 North, Range 39 East of the Willamette Meridian.

REFERENCE MATERIAL

- Original G.L.O. Survey Notes
Union County Monumentation records
Survey Number 26-70
Survey Number 56-74
- DEED REFERENCES
Volume V Page 499
Volume 38 Page 162
Volume 156 Page 337
Deed Microfilm Number 148041

LEGEND

- Found monument as described, as per Union County monumentation records
- ⊙ Set 2 1/2"x30" aluminum monument at proportionate position (Unless otherwise noted)
- Set 5/8" iron pin with plastic cap marked BGA SURVEY MARKER
- () GLO record bearing and distance
- [] Record distance of Survey No. 26-70
- Centerline
- *- Existing fence line

NOTE:

For monumentation information, see monumentation sheets filed separately.

REGISTERED PROFESSIONAL LAND SURVEYOR
RICK G. ROBINSON
JULY 17, 1988
2219
Renewal Date: Dec. 31, 1994

UNION COUNTY
8/2/93
8/8/93
By: [Signature]
File No. 030-1993

BAGETT-GRIFFITH & ASSOCIATES
LaGrande, Oregon
Map of Survey
Lot Line Adjustment in the Northwest quarter of Section 9, Township 1 North, Range 39 East of the Willamette Meridian
UNION COUNTY, OREGON
SURVEYED FOR: Bob Wiles
SURVEYED BY: R.G.R. 7 8 8-93
Scale: 1"=100' Drawn by: R.G.R. 8-93

Survey No. 030-1993