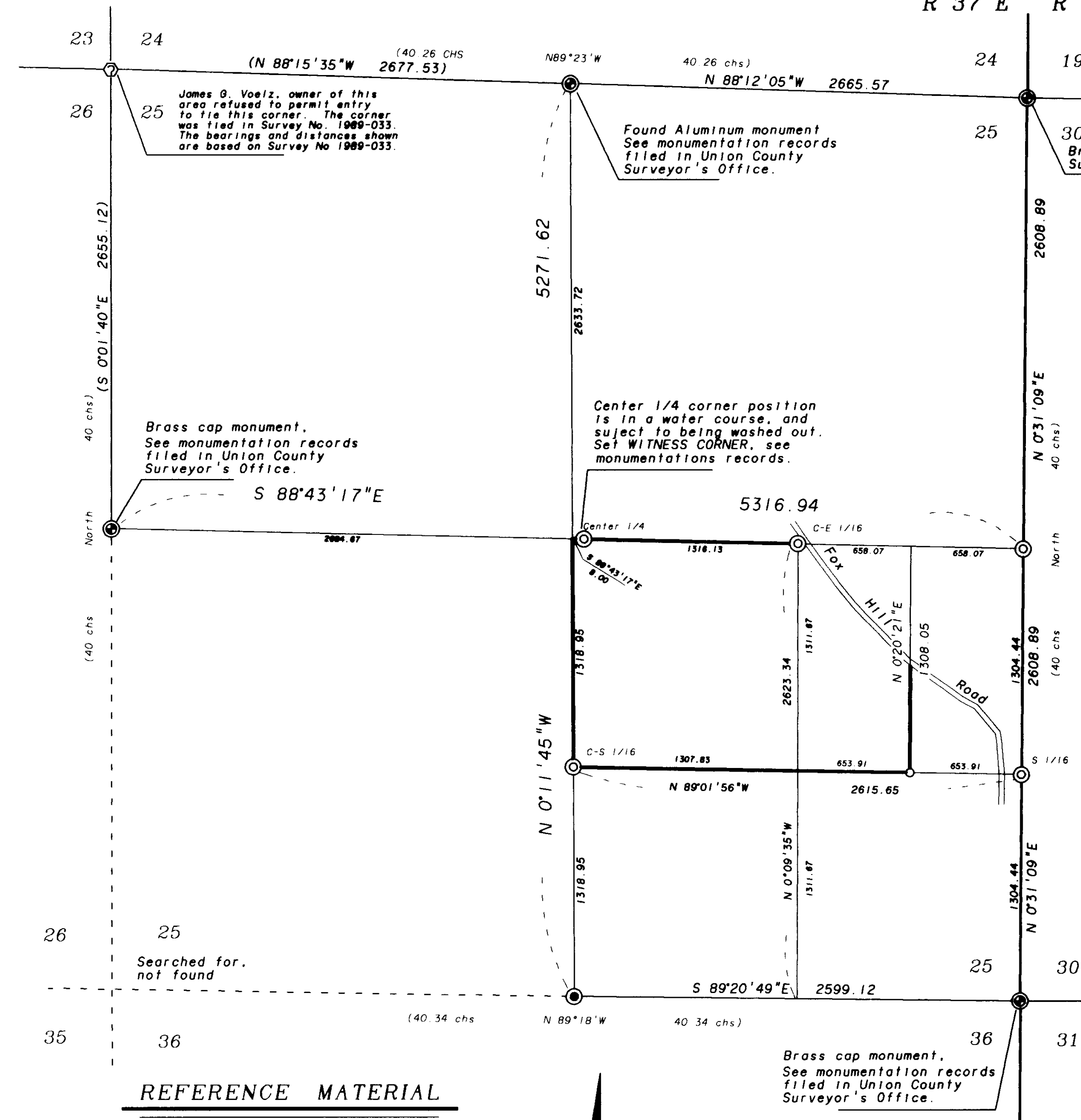


T 2 S
R 37 E R 38 E



LEGEND

- ⊙ Found monument as noted.
- Found evidence of original GLO corner. set 2-1/2" 30" aluminum monument. See monumentation records filed separately
- ⊙ Set 2-1/2" X 30" aluminum monument in position determined by survey. See monumentation records filed separately
- Set 5/8" X 30" rebar with plastic cap marked "BGA SURVEY MARKER"
- [] GLO record bearing and distance.
- () Record bearing and distance, based on Survey 1989-003, rotated to this basis of bearing.

NARRATIVE

This survey was made at the request of Stan Wilde on behalf of BOISE CASCADE CORPORATION, to locate and monument the parcel shown hereon.

I found controlling corners as shown. I searched for the SW corner, however there has been extensive logging in the area. I found no evidence. When I found the South 1/4 corner I did not need the SW corner. I was somewhat concerned with the skew on the north line of the section. James G. Voelz refused to let us on his property to tie the NW corner of the section. In 1989 Jim Hanley made a survey in which he tied in this corner. I tied into Hanley's survey, then rotated his bearings to determine the position of the NW corner and find the skew does indeed exist. I find the East line to be quite short, however the topographic call supports the proportionate position of the 1/4 corner. I found the marked stone at the south 1/4 corner near an old fence jack. I do not believe the stone has been moved. I would be more inclined to believe the old fence was built to the original mound. I found the topographic calls to fit this position. There was a survey by J.L. Curtis, County Surveyor in 1890, No. 126, page 271 of the old survey book. Curtis said he set the C-W 1/16 and the Center 1/4 corners in this survey. He did not say what he set or call for any references. I searched these two positions and found no evidence of this survey.

I found no unusual conditions in this survey.

REGISTERED
PROFESSIONAL
LAND SURVEYOR

Duane I. Griffith

OREGON
JULY 10, 1964
DUANE I. GRIFFITH
644
Renewal Date: Dec. 31, 1993

REFERENCE MATERIAL

Government Land Office field notes, Contract # 201, executed by J. Hurlburt.

Monumentation records filed with the Union County Surveyor.

Map of Survey No. 065-72
Map of Survey No. 006-78
Map of Survey No. 037-78
Map of Survey No. 033-89



BASIS of BEARING

Forward bearing as published by the U.S.C. and G.S. from Δ COLLEGE to Δ VALLEY Dated 1946.

UNION COUNTY
DEPT. 2

Received 7/30/93
Filed 8/8/93
By *Huyon T. da...*
File No. 027-1993

BAGETT-GRIFFITH & ASSOCIATES
LaGrande, Oregon
Map of Survey

A portion of the
North 1/2 of the SE 1/4 of
Section 25, T 2 S, R 37 E, WM
UNION COUNTY, OREGON

SURVEYED FOR	Boise Cascade Corporation	
SURVEYED BY	dig	July 1993
Scale: 1" = 500'	Drawn by: Lucy	July 1993

Map of Survey No 1993-027