

# BASIS of BEARING

Forward bearing as published by the U.S.  
and G.S. from  $\Delta$  COLLEGE to  $\Delta$  VALLEY  
Dated 1946.



SCALE: 1" = 400'

## NARRATIVE

This survey was made under the direction of the Union County Surveyors Office to locate and monument Section 17 as shown. There has been a great deal of development in the area with little if any regard for the integrity of the aliquot division of the section. It is the intent of this survey to preserve the existing lines of occupancy as much as possible. It is also the intent to establish a basis for future surveys and development that will conform with the aliquot division of the section where the description refers to sectional subdivision.

The section was originally subdivided by David T. Thompson in 1863. Most of the monuments set by Thompson were wooden posts, which did not survive. In 1889 J.W. Kimbrell made a survey from the SW corner of section 17 in which a 48 inch pine was marked. The only evidence of a very large pine is too far from the position to be considered. The area has been logged and burned several times. I found a marked stone, next to a small mound of stone, see monumentation records. I accept this stone as marking the SW corner; I believe it to have been marked while the corner was still evident.

At the SE corner of section 17 I found a 1-1/4" iron pipe. This pipe was driven in an ancient E-W fence line. See monumentation record. I accept this as marking the SE corner of section 17. Both of these positions are very harmonious with conditions in the section.

In 1922 A.H. McLain made a survey of the City of LaGrande, and surrounding area, which covered the North line and part of the East line of section 17. This survey of McLain's was very well done, a great deal of accuracy and good monumentation. The monuments he set on the north line, and the East 1/4 corner have been recovered and I have used them in this survey.

The development along 12th Street has evolved from many surveys, both recorded and unrecorded. Most of these are based on the North 1/4 corner; a concrete monument set by McLain in the 1922 survey. Over the last 20 years I have tied and used many of these surveys. I made a detailed study of these surveys along 12th Street in 1979. I determined a line that is generally consistent with said surveys from the 1/4 corner south. I find this line is 40 feet east of and parallel to the west line of said 12th Street. The east line of 12th Street is 20 feet east of this line. In 1992 I referred to this line as the "12th Street Reference Line".

The South 1/4 corner of section 17 was a post and two bearing trees, with a spring branch with 30 feet. The area is now under cultivation, there is a spring evident but I am unable to determine its original location. The "12th Street Reference Line" and the south line of the section intersect at a point approximately 12 feet east of the proportionate position. I elected to use this intersection of the "12th Street Reference Line" and the line between the SE and SW section corners as the south 1/4 corner of this section.

I placed the west 1/4 corner at the proportionate position between the SW and NW corners of the section. I am showing part of the surveys I considered in this survey. I am also showing the monuments and fence lines I tied and the relation to aliquot lines and interior corners of the section as shown.

REGISTERED  
PROFESSIONAL  
LAND SURVEYOR  
*Duane I. Griffith*  
OREGON  
JULY 10, 1964  
DUANE I. GRIFFITH  
844  
Renewal Date: Dec. 31, 1993

## LEGEND

- ⊙ Found monument of record as noted.
  - ⊙ Found some type of evidence, as noted on monumentation sheets filed separately, also discussed in the narrative. Set 2-1/2" X 30" aluminum monument.
  - Found monument as called for in Survey 6-73.
  - ◆ Found monument as called for in Survey 62-75.
  - ▲ Found monument as called for in Survey 30-90.
  - Found monument as called for in Survey 007-1992.
  - Found monument as called for in Major Partition 1992-006.
  - ⊙ Set 2-1/2" X 30" aluminum pipe with 2-1/2" cap.
- ( ) G.L.O. record bearing and distance.

## REFERENCE MATERIAL

General Land Office Field Notes,  
G.L.O. Contract No. 103.

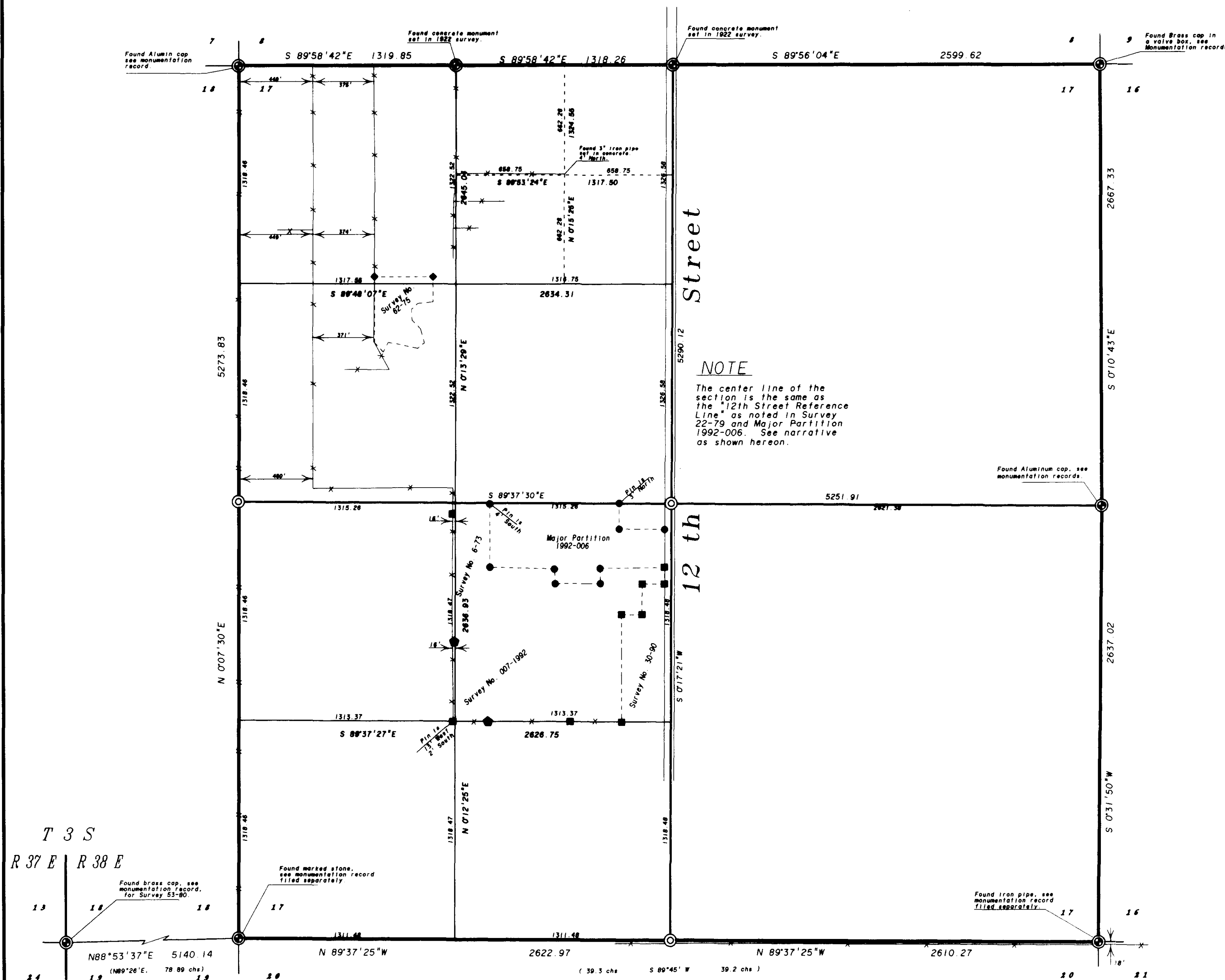
Old Survey Book Volume 1, page 219.

Minor Partition Number 1991-006  
Major Partition Number 1992-006

Map of Survey Number 006-73  
Map of Survey Number 039-73  
Map of Survey Number 034-74  
Map of Survey Number 079-74  
Map of Survey Number 026-75  
Map of Survey Number 062-75  
Map of Survey Number 072-75  
Map of Survey Number 033-76  
Map of Survey Number 022-79  
Map of Survey Number 053-80  
Map of Survey Number 052-82  
Map of Survey Number 012-85  
Map of Survey Number 030-90  
Map of Survey Number 007-1992

### NOTE

The center line of the section is the same as the "12th Street Reference Line" as noted in Survey 22-79 and Major Partition 1992-006. See narrative as shown hereon.



UNION COUNTY  
SURVEYOR  
Date Received: 6-30-93  
Date Filed: 6-30-93  
By: R. [Signature] Deputy  
File No: 022-1993

BAGETT-GRIFFITH & ASSOCIATES  
LaGrande, Oregon  
Map of Survey  
Section 17  
Township 3 South, Range 38 East  
Willamette Meridian  
UNION COUNTY, OREGON  
SURVEYED FOR: UNION COUNTY SURVEYOR  
SURVEYED BY: dig June 1993  
Scale: 1" = 400' Drawn by: Lucy June 1993

Survey No. 022-1993