

# BASIS OF BEARING

The North line of Section 6 as recorded on Map of Survey Number 004-1989.

## REFERENCE MATERIAL

General Land Office Field notes.  
 Old Survey Volume, Page 19.  
 Map of Survey Number 040-1970  
 Map of Survey Number 004-1989  
 Map of Survey Number 053-1991

## LEGEND

- ⊙ Found aluminum monument, Survey 004-1989.
- ⊙ Found evidence of GLO monument, set 2-1/2" X 30" aluminum monument.
- ⊙ Set 2-1/2" X 30" aluminum monument at position determined by survey.
- Set 5/8" X 30" rebar with plastic cap marked "BGA SURVEY MARKER".
- X— Existing Fence line
- P— Posted line, set steel fence posts.
- ( ) Record G.L.O. bearing and distance.
- [ ] Record bearing and distance, Survey 004-1989

## NARRATIVE

This survey was made at the request of Harvey Sherman to locate the survey lines as shown. I marked the lines shown as posted, with steel fence posts set at positions intervisible from one to the next.

I found the original GLO corners as indicated. The proportionate position of the East 1/4 corner of section 6 is on the north bank of Rock Creek. GLO notes call this corner to be 264 feet north of this creek. There have been changes made in the area of this corner, it appears that the creek's channel has been changed. I determined the position of said east 1/4 corner at proportionate position. This position is on the northerly bank of said Rock Creek and would be subject to washout. I set a witness corner 20.00 feet north and on the section line as shown hereon. See monumentation records filed separately.

I found no unusual conditions in this survey.

REGISTERED  
 PROFESSIONAL  
 LAND SURVEYOR

*Duane I. Griffith*

OREGON  
 JULY 10, 1964  
 DUANE I. GRIFFITH  
 644

Renewal Date: Dec. 31, 1993

UNIVERSITY  
 6-22-93  
 6-30-93  
 P. Robinson, Deputy  
 020-1993

BAGETT-GRIFFITH & ASSOCIATES

LaGrande, Oregon  
 Map of Survey  
 Section 6  
 Township 3 South, Range 37 East  
 Willamette Meridian

UNION COUNTY, OREGON

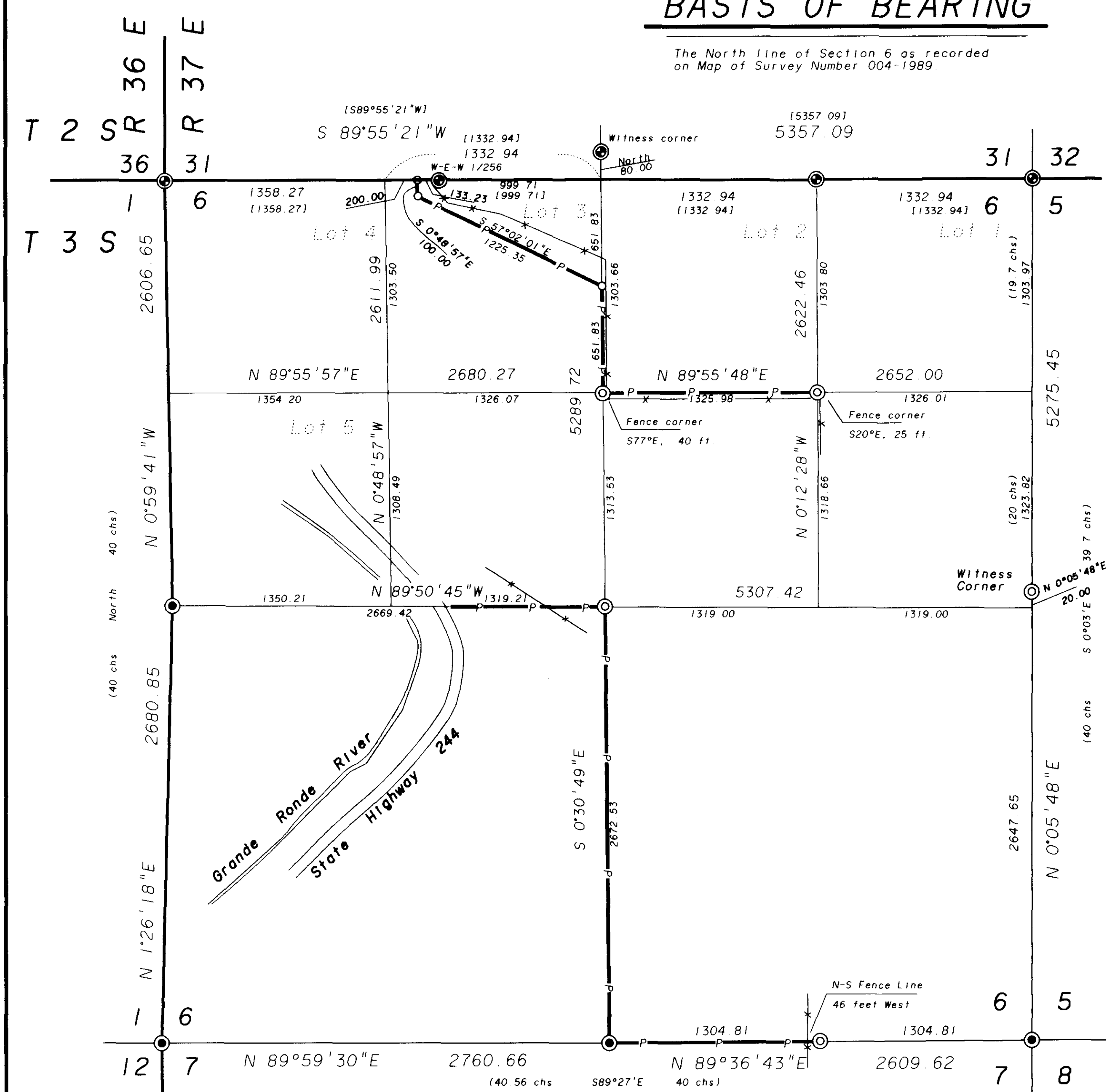
SURVEYED FOR HARVEY SHERMAN

SURVEYED BY dig May 1993

Scale: 1" = 500' Drawn by: Lucy June 1993

## NOTE

See monumentation records filed separately.



Survey No. 1993-020