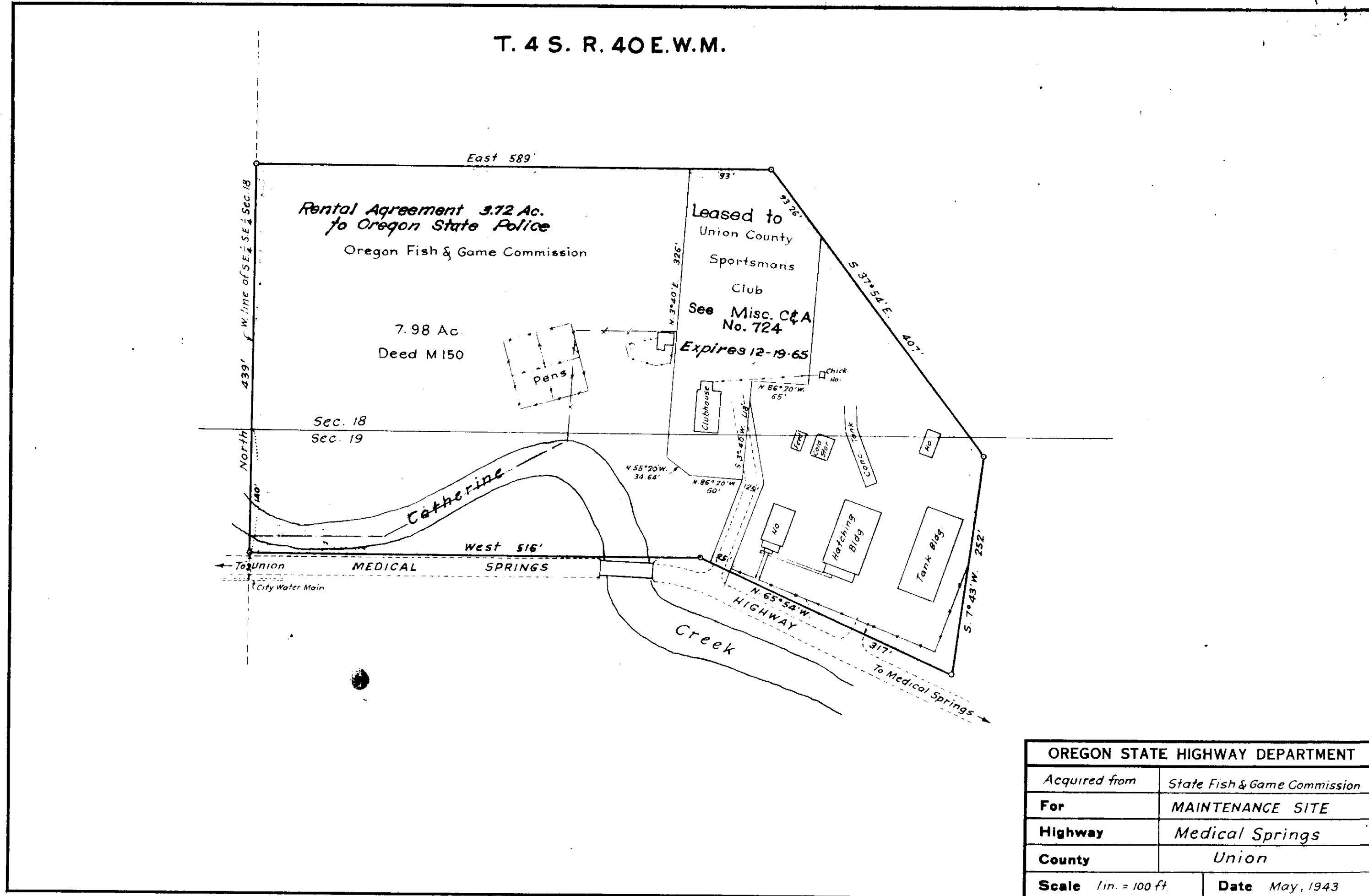


17-1-339

T. 4 S. R. 40 E. W. M.



OREGON STATE HIGHWAY DEPARTMENT	
Acquired from	State Fish & Game Commission
For	MAINTENANCE SITE
Highway	Medical Springs
County	Union
Scale 1 in. = 100 ft	Date May, 1943

2/25/93
 2/25/93
 R. ROBINSON, DEPUTY
 007-1993