



SCALE: 1" = 1000'



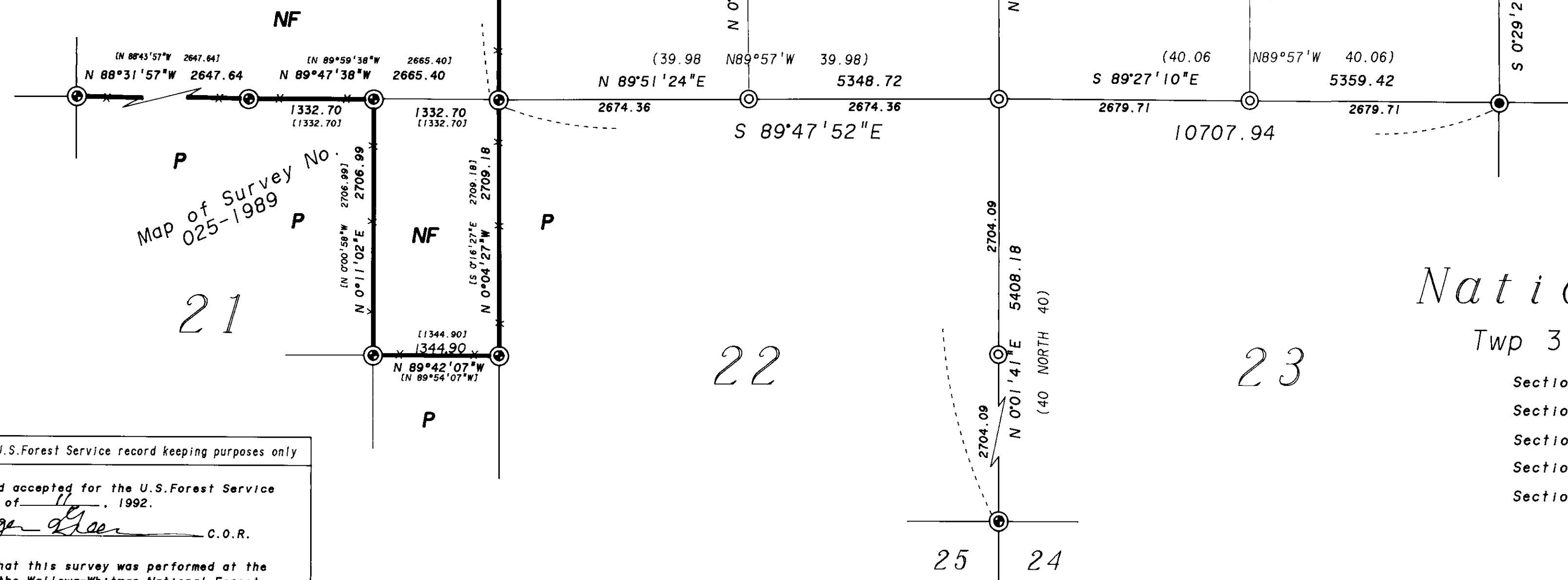
### BASIS OF BEARING

Solar observations taken at a point 33 feet South, and 294 feet West of the corner common to sections 2-3-10 & 11, T 3 S, R 36 E, WM. 20° EAST DECLINATION

### LEGEND

- ⊙ Found monument set in 1989, by Blackman Survey No. 025-1989, unless otherwise noted.
- ⊙ Found evidence of GLO corner. Set 2-1/2" X 30" aluminum monument.
- ⊙ Set 2-1/2" X 30" aluminum monument.
- ( ) Record GLO bearing and distance.
- [ ] Record bearing and distance Survey No. 025-1989.
- National Forest Boundary posted to standard.
- P Privately owned lands.
- NF National Forest lands

SEE MONUMENTATION SHEETS FILED SEPARATELY.



## History of Surveys

The original survey of this Township was executed by John H. Hurlburt under General Land Office Contract number 201, dated August 5, 1893.

In 1888 J.W. Kimbrell, Union County Surveyor was unable to find the 1/4 corner common to sections 16 and 15. He set a new corner stone. Page 114 of the Old Survey Volume.

In 1986 I remonumented the section corner common to 11, 12, 13, and 14 from the original NW bearing line.

Dennis Gaylord remonumented the corner common to sections 2 and 3 on the North line of the Township in 1987.

In 1989 Greg Blackman subdivided sections 21 and 27, setting section, quarter section, and sixteenth corners as shown. See survey 025-1989.

DETAIL  
Scale: 1"=200'

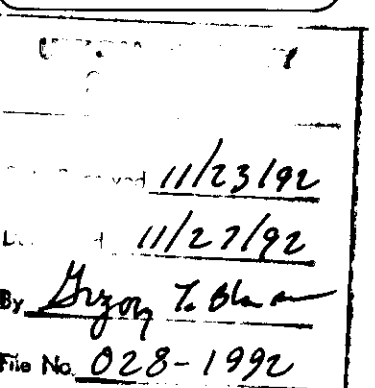
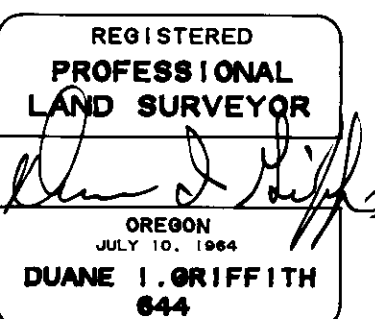
## Narrative

I, Duane I. Griffith, Registered Land Surveyor in the State of Oregon, hereby certify that this plat and the notes hereon, or attached, are a true and exact representation of the survey I made in July and August of 1992 at the request of the USDA Forest Service, in accordance with the statutes of the State of Oregon and with the articles of my contract.

This survey was made to locate and mark the boundaries of the National Forest lands as shown hereon. I found the original corners set by others or evidence as shown. There has been a great deal of destruction of original corners. There appears to have been considerable damage do to fire. What the fire did not destroy, logging did. I found it necessary to double proportion the section corners common to 2-3-10-11; 10-11-14-15; and 14-15-22-23. I set the following 1/4 section corners by single proportion: 2-3; 10-11; 11-12; 15-16; 14-15; 22-23; 15-22; 14-23; 3-10; and 2-11. Some of these corners are in cultivated areas, see monumentation sheets filed separately. I find some encroachment by the gun club, a portion of the covered shooting range is on the forest, see the detailed inset.

I find no unusual conditions in this survey.

*Duane I. Griffith*  
Duane I. Griffith, PLS 644  
BAGETT-GRIFFITH & ASSOCIATES  
2006 Adams Avenue  
LaGrande, Oregon 97850



## National Forest Lands

Twp 3 South, Rng 36 East, Willamette Meridian

- Section 10: All
- Section 11: The West 1/2; and The West 1/2 of the East 1/2.
- Section 14: The NE 1/4 of the NW 1/4.
- Section 15: The NW 1/4; and The NW 1/4 of the NE 1/4.
- Section 21: The East 1/2 of the NE 1/4.

The information within these boxes is for U.S. Forest Service record keeping purposes only

PROJECT NAME TWEETY CADASTRAL SURVEY	Examined and accepted for the U.S. Forest Service this 10 day of <u>July</u> , 1992.
CONTRACT NUMBER 53-04M3-2-0054	<i>Roger E. Lee</i> C.O.R.
FIELD BOOKS Traverse Book 1 through 6 Remonumentation Books 1 & 2	I certify that this survey was performed at the request of the Willowa-Whitman National Forest NATIONAL FOREST SUPERVISOR <i>B.M. Richardson</i> Signature
	11/10/92 Date

BAGETT-GRIFFITH & ASSOCIATES LaGrande, Oregon Map of Survey	
Locate and mark Nat'l Forest boundary in Sections 11-14-15-21 Twp 3 South, Rng 36 East, WM UNION COUNTY	
SURVEYED FOR WALLOWA-WHITMAN NAT'L FOREST	
SURVEYED BY dig	7. 8. 1992
Scale: 1"=1000'	Drawn by: Lucy 9. 1992

Survey No. 028-1992