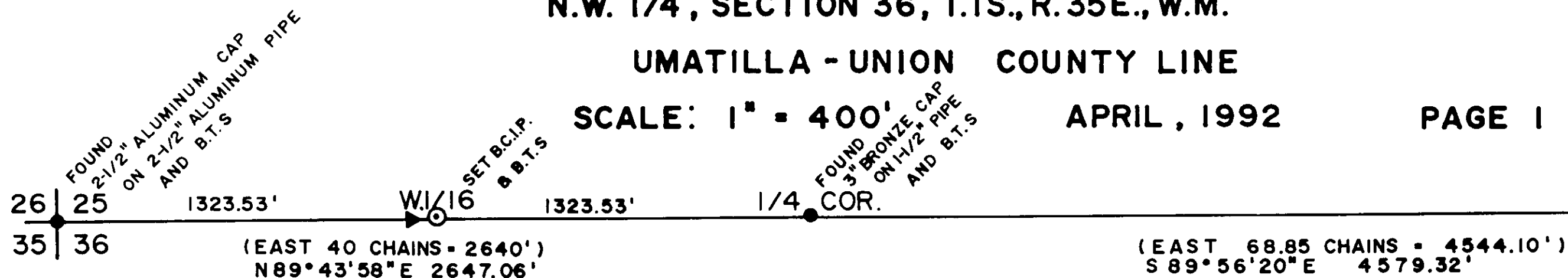


OREGON STATE PARKS & RECREATION DEPARTMENT
 BLUE MOUNTAIN FOREST WAYSIDE SURVEY
 N.W. 1/4, SECTION 36, T.1S., R.35E., W.M.
 UMATILLA - UNION COUNTY LINE

SCALE: 1" = 400' APRIL, 1992 PAGE 1 OF 2



REGISTERED PROFESSIONAL LAND SURVEYOR
 OAS
 OREGON JULY 28 1988
 ANDREW T. BLACHLY
 2168

OREGON CORNER RESTORATION FORM
 Section 36 Township 1 S Range 35 E
 County UMATILLA - UNION COUNTY LINE Date 3-4-92

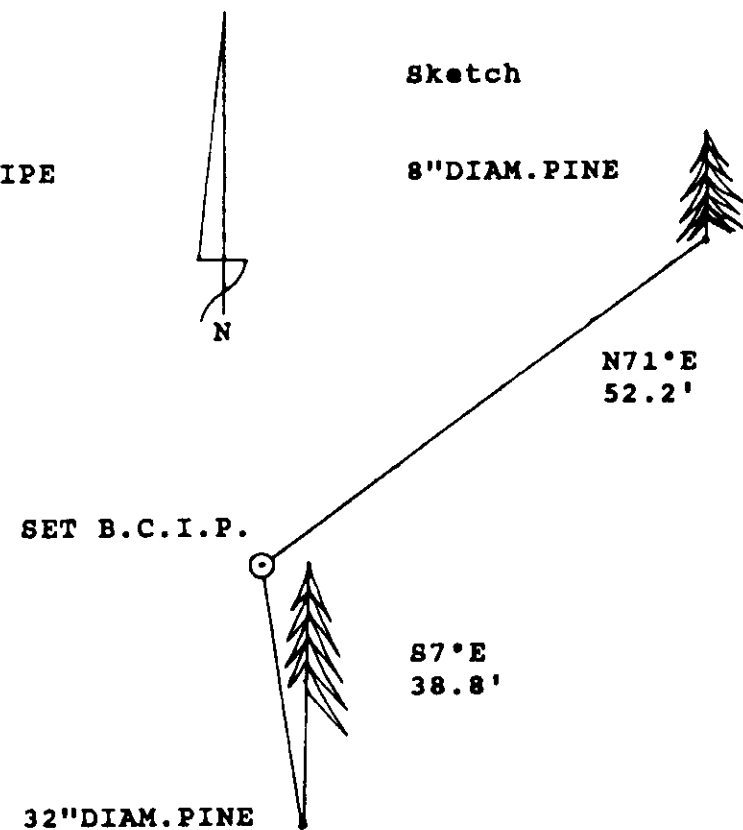
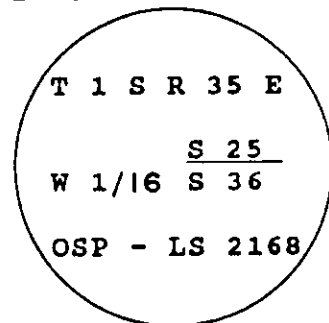
Corner Designation
 WEST 1/16 CORNER S25 S36

 Condition Report Only
 Not Found
 Renewed
 Unrecorded
 X Surveyed In
 Referenced Out

Previous Renewals/Surveys, etc.
 NONE
 Monument(s) & Accessories Found: (Condition and Source)
 NONE

Monument Detail

2 1/2" DIAM. BRASS CAP ON 1 1/2" DIAM. GALVANIZED PIPE



Monument Set (Procedures and Description)

2 1/2" DIAM. BRASS CAP ON 1 1/2" X 30" GALVANIZED PIPE IN 3 FT. DIAM. MOUND OF STONES 1 FT. HIGH

New Accessories

ORANGE CARSONITE WEST 4.0 FT. MARKED "PROPERTY BOUNDARY - PARK LAND BEHIND THIS SIGN"
 8" DIAM. PINE N71°E 52.2 FT. SCRIBED "X BT" WITH LOCATION POSTER
 32" DIAM. PINE S 7°E 38.8 FT. SCRIBED "W1/16 S36 BT" WITH LOCATION POSTER

Location & Comments
 by: Oregon State Parks & Recreation Department
 525 Trade Street, S.E.
 Salem, OR 97310

Party Chief: BILLY J.W. HERMANN
 Notes: BILLY J.W. HERMANN
 Witness: HAROLD HANSON

OREGON CORNER RESTORATION FORM
 Section 36 Township 1 S Range 35 E
 County UMATILLA - UNION COUNTY LINE Date 3-4-92

Corner Designation
 E 1/4 CORNER SECTION 36 ONLY R35E R36E

 Condition Report Only
 Not Found
 Renewed
 Unrecorded
 X Surveyed In
 Referenced Out

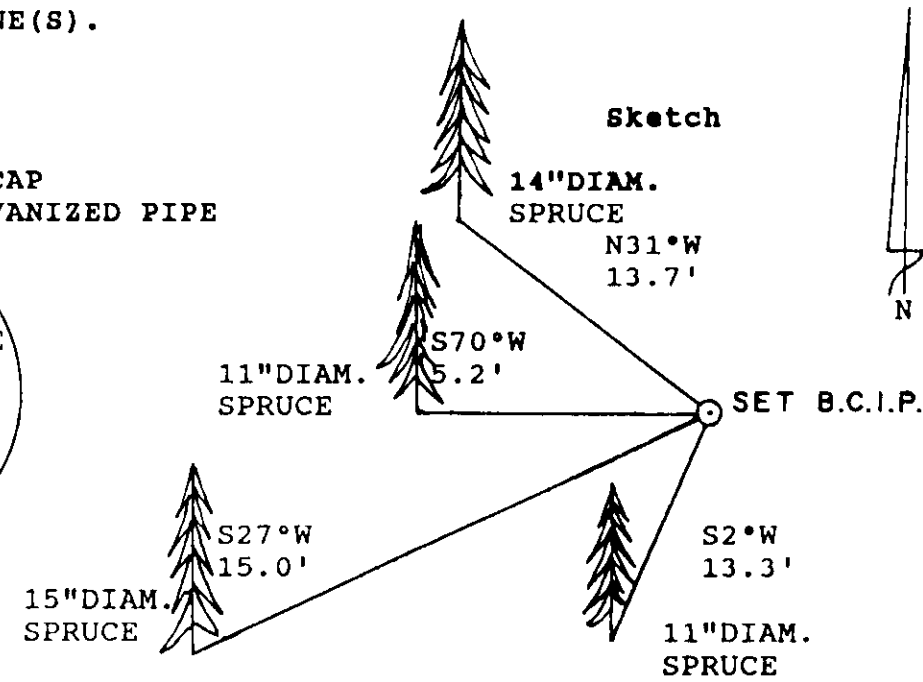
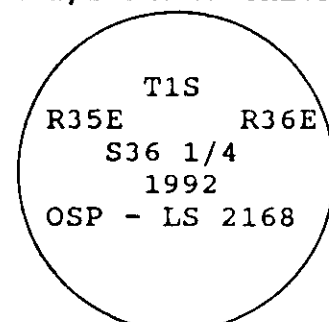
Previous Renewals/Surveys, etc.
 (OLD SURVEY PLAT BOOK # 1 SURVEY FOR J.F.HUFF, H.J.TAYLOR AND CORBET JUNE 9th 1891)

Monument(s) & Accessories Found: (Condition and Source)

PAINTED STONE WITH DRILL HOLE AMONGST SMALL PILE OF STONES WHERE NO OTHER SURFACES ROCKS OR STONES ARE PRESENT. BLAZED TREE LINE RUNS WEST FROM STONE(S).

Monument Detail

2 1/2" DIAM. BRASS CAP ON 1 1/2" DIAM. GALVANIZED PIPE



Monument Set (Procedures and Description)

2 1/2" DIAM. BRASS CAP ON 1 1/2" X 30" GALVANIZED PIPE LEFT 0.3' HIGH

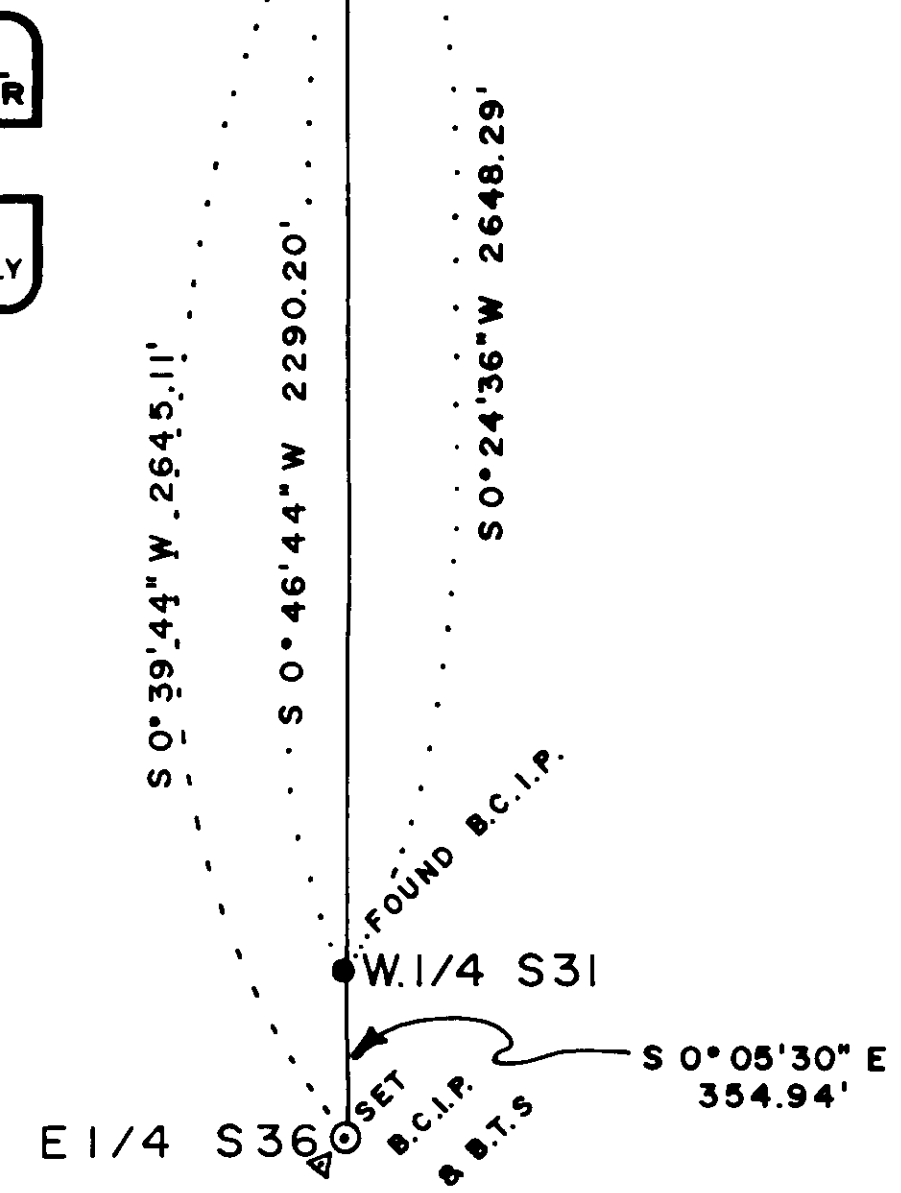
New Accessories

ORANGE (BLANK) CARSONITE 2.0' WEST OF BRASS CAP AND IRON PIPE
 14" DIAM. SPRUCE N31°W 13.7' SCRIBED "X BT" WITH LOCATION POSTER
 11" DIAM. SPRUCE S70°W 5.2' SCRIBED "X BT" WITH LOCATION POSTER
 15" DIAM. SPRUCE S27°W 15.0' SCRIBED "T1S R35E 1/4 S36 BT" WITH LOCATION POSTER
 11" DIAM. SPRUCE S2°W 13.3' SCRIBED "X BT" WITH LOCATION POSTER

Location & Comments
 by: Oregon State Parks & Recreation Department
 525 Trade Street, S.E.
 Salem, OR 97310

Party Chief: BILLY J.W. HERMANN
 Notes: BILLY J.W. HERMANN
 Witness: HAROLD HANSON

UNION COUNTY SURVEYOR
 dated 7-1-92
 and 7-17-92
 By *Greg T. Olan*
 File No. 027-1992



NARRATIVE

THE PURPOSE OF THIS SURVEY WAS TO ESTABLISH CONTROL FOR THE BOUNDARY OF PARKS PARCEL P-73 BLUE MOUNTAIN FOREST WAYSIDE LYING IN THE NORTHWEST QUARTER OF SECTION 36, T.1S., R.35E., W.M. OF UNION COUNTY THE BEARINGS ARE FROM A STATE PARKS SURVEY OF SECTION 1, T.2S., R.35E., W.M. DATED 3/1/82.

CONTROL WAS ESTABLISHED WITH A PENTAX, PX-10D, TOTAL STATION.

THE PARKS SURVEY CREW; B.HERMANN, H.HANSON & S.DEJANAKUL, FOUND AND TIED TO THE CONTROL ALL THE NECESSARY MONUMENTS TO CALCULATE THE SET OF THE WEST 1/16 CORNER COMMON TO SECTIONS 25 AND 36, T.1S., R.35E., W.M. BY CALCULATING A SINGLE PROPORTIONED MIDPOINT ON LINE BETWEEN FOUND SECTION CORNER COMMON TO SECTIONS 25, 26, 36 & 35 AND THE QUARTER CORNER COMMON TO SECTIONS 25 AND 36. (W1/16COR. = N.E. COR. PARCEL P-73)
 A PAINTED PILE OF STONES WITH ONE STONE HAVING A DRILLED HOLE WAS FOUND AT THE EAST QUARTER CORNER TO SECTION 36. A LINE OF BLAZED TREES RAN WEST FROM THE PILE OF STONES. CALCULATIONS SUPPORTED THE LOCATION OF THE STONES AS THE QUARTER CORNER.
 CONTROL FOR THE SOUTH BOUNDARY OF PARCEL P-73.

LEGEND

- INDICATES FOUND MONUMENT
- INDICATES SET 2 1/2" DIAM. BRASS CAP ON 1 1/2" DIAM. GALVANIZED PIPE
- ▶ INDICATES SET ORANGE CARSONITE POST WITH DECAL MARKED "PROPERTY BOUNDARY - STATE PARK LAND BEHIND THIS SIGN"
- ▷ INDICATES SET ORANGE CARSONITE POST, NO DECAL
- () INDICATES RECORD INFORMATION
- B.C.I.P. BRASS CAP ON IRON (GALVANIZED PIPE) PIPE
- B.T.S. BEARING TREES

Survey Number 027 - 1992

OREGON STATE PARKS & RECREATION DEPARTMENT
 BLUE MOUNTAIN FOREST WAYSIDE SURVEY
 N.W. 1/4, SECTION 36, T.1S., R.35E., W.M.
 UMATILLA - UNION COUNTY LINE

APRIL, 1992

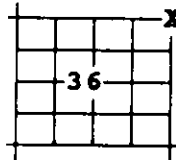
PAGE 2 OF 2

OREGON CORNER RESTORATION FORM

Section 36 Township 1 S Range 35 E
 County UMATILLA - UNION COUNTY LINE Date 1-04-90

Corner Designation 25

CLOSING CORNER
 SECTION 25 &
 SECTION 36
 T.1S., R.35E., W.M.
 ON SECTION 31
 T.1S., R.36E., W.M.



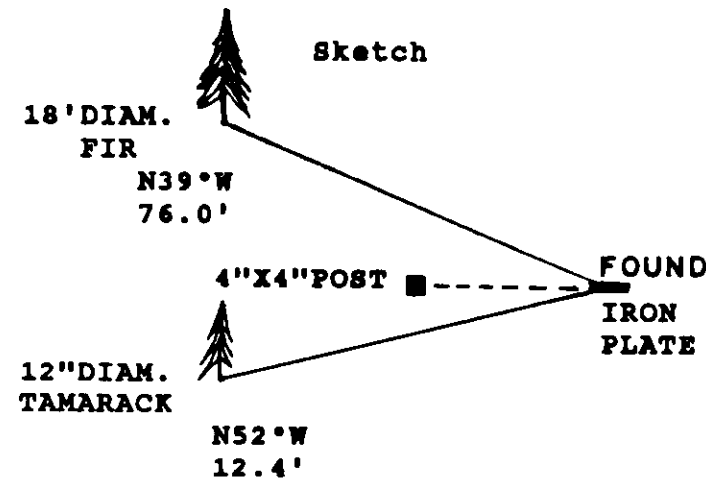
Previous Renewals/Surveys, etc.

G.L.O. SURVEY BY JACOB COOPER UNDER CONTRACT #397 JULY 1, 1881.
 RESTORED ARNOLD G. GIBSON L.S.#359 SEPTEMBER 17, 1969

Monument(s) & Accessories Found: (Condition and Source)

- 3/16" X 4" IRON PLATE
- 4" X 4" WHITE WOOD POST N.45° W. 1'
- 8" FIR BEARS S56°E 10 LINKS (NO REMAINS)
- 7" FIR BEARS S50°W 24 LINKS (STUMP HOLE REMAIN)
- 4" FIR BEARS N42°W 25 LINKS (STUMP HOLE REMAIN)
- 17" FIR BEARS S23°W 44.9' (SINGLE PARTIALLY HEALED BLAZE - SCRIBING VISIBLE)
- 12" TAMARACK N52°W 12.4' NOW IS DEAD LEANING AGAINST FIR TO NW, FOREST SERVICE TAG & FORESTRY TAG ATTACHED TO TREE.
- 18" FIR BEARS N39°W 76.0' (SINGLE PARTIALLY HEALED BLAZE - SCRIBING VISIBLE)

Monument Detail



Monument Set (Procedures and Description)

NONE

New Accessories

NONE

Location & Comments

BEARINGS BY HAND
 COMPASS
 DISTANCES BY STEEL
 TAPE

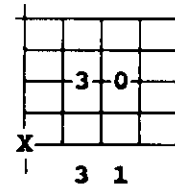
Compass Declination
 by: 20° E. of NORTH
 Oregon State Parks
 & Recreation Department
 525 Trade Street, S.E.
 Salem, OR 97310
 Party Chief: BILL HERMANN
 Notes: BILL HERMANN
 Witness: HAROLD HANSON & S. DEJANAKUL

OREGON CORNER RESTORATION FORM

Section 30 Township 1 S Range 36 E
 County UMATILLA Date 1-04-90

Corner Designation

CLOSING CORNER
 SECTION 30 &
 SECTION 31
 T.1S., R.36E., W.M.
 ON SECTION 25
 T.1S., R.35E., W.M.



Previous Renewals/Surveys, etc.

G.L.O. SURVEY 1881
 RESTORED ARNOLD G. GIBSON L.S.#359 SEPTEMBER 17, 1969

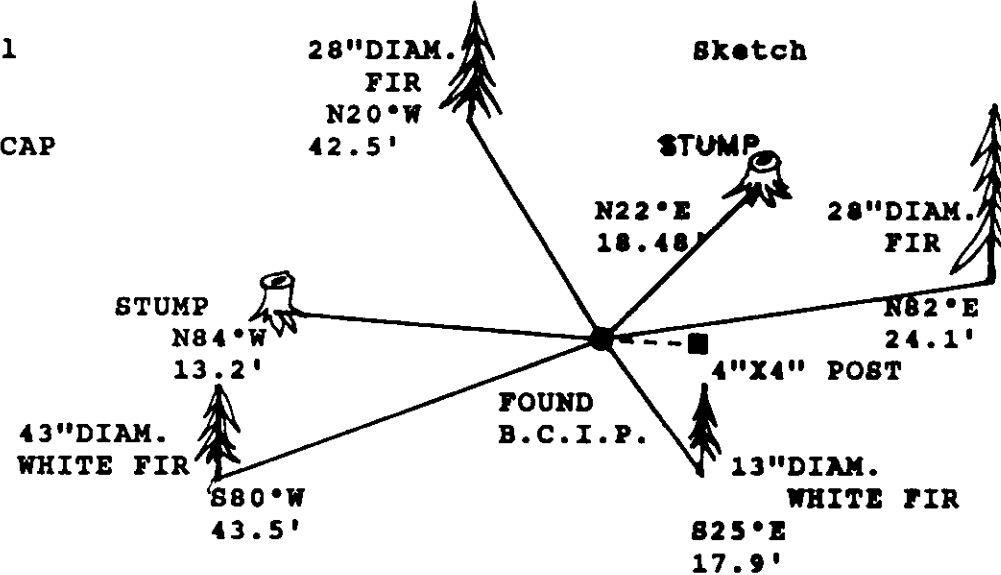
Monument(s) & Accessories Found: (Condition and Source)

- 14" TAMARACK BEARS N22°E 28 LINKS (18.48') NOW STUMP 6" HIGH N22°E 19.5'
- 12" FIR BEARS S63°E 23 LINKS (15.18') NO REMAINS.
- 24" FIR BEARS S10°W 26 LINKS (17.16') NO REMAINS.
- 24" FIR BEARS N84°W 20 LINKS (13.2') NOW STUMP 18" HIGH SLAB OF ORIGINAL FACE ONE SCRIBE MARK REMAINING.
- 28" FIR BEARS N82°E 24.1' SINGLE HEALED BLAZE, BLM TAG ATTACHED.
- 13" WHITE FIR BEARS S25°E 17.9' SINGLE PARTIALLY HEALED BLAZE "BT" VISIBLE, BLM TAG ATTACHED.
- 43" WHITE FIR BEARS S80°W 43.5' OPEN FACE NOT SCRIBED, TO TAG ATTACHED.
- 28" FIR BEARS N20°W 42.5' SINGLE PARTIALLY HEALED BLAZE "RS 359" VISIBLE.
- 4" X 4" WHITE WOOD POST 1' EAST OF MONUMENT.

Monument Detail

STANDARD BLM
 3" DIAM. BRASS CAP

T1S
 T1S S30
 S25
 R35E S31
 R36E
 1984



Monument Set (Procedures and Description)

NONE

New Accessories

NONE

Location & Comments

BEARINGS BY HAND
 COMPASS
 DISTANCES BY STEEL
 TAPE

Compass Declination
 by: 20° E. of NORTH
 Oregon State Parks
 & Recreation Department
 525 Trade Street, S.E.
 Salem, OR 97310

Party Chief: BILL HERMANN
 Notes: BILL HERMANN
 Witness: HAROLD HANSON,
 S. DEJANAKUL

REGISTERED
 PROFESSIONAL
 LAND SURVEYOR

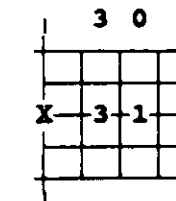
OREGON
 JULY 28 1982
 ANDREW T. BLACHLY
 2108

OREGON CORNER RESTORATION FORM

Section 31 Township 1 S Range 36 E
 County UMATILLA - UNION COUNTY LINE Date 12-14-89

Corner Designation

W. 1/4 CORNER
 SECTION 31 ONLY



Previous Renewals/Surveys, etc.

G.L.O. SURVEY BY JACOB COOPER UNDER CONTRACT #397 JULY 1, 1881.
 RESTORED BY ARNOLD GIBSON L.S.#359 IN 1969.

Monument(s) & Accessories Found: (Condition and Source)

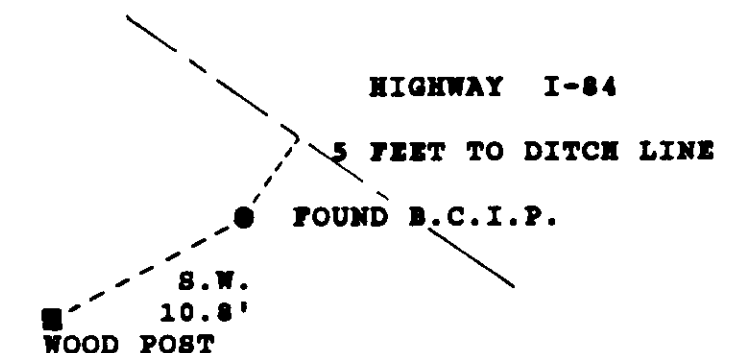
- FOUND 3" DIAM. BRONZE CAP ON 2" DIAM. GALV. IRON PIPE 1.8' ABOVE GROUND - PIPE CORRECTED LEANNING PIPE APPROXIMATELY 0.5' TO N 50° E PIPE IS 5.0' FROM A DITCH LINE.
- FOUND 4"X4" WOOD POST 10.8' - SOUTHWEST OF B.C.I.P./GIBSON SET 2.0'SW OF CORNER PIPE.
- FOUND 17" FIR STUMP 1.0' HIGH S 5° E - 42.4' TO CENTER HAS PARTIALLY HEALED BLAZE FACE (PLACED PARKS CORNER TAG ON STUMP).
- FOUND 19" FIR S 14° W - 35.0' TO CENTER - NO VISIBLE SCRIBES.

Monument Detail

3" DIAM. BRONZE CAP

OREGON
 STATE BOARD
 OF FORESTRY
 1/4
 -S36
 1969
 RS 359

Sketch



Monument Set (Procedures and Description)

LEANING LOOSE GALVANIZED IRON PIPE WITH BRONZE CAP STRAIGHTENED AND DIRT, STONES AND GRAVEL USED TO FIRM UP PIPE.

New Accessories

NONE

Location & Comments
 BEARINGS AND DISTANCES
 BY HAND COMPASS
 AND STEEL TAPE

Compass Declination
 20° E. of NORTH
 by:
 Oregon State Parks
 & Recreation Department
 525 Trade Street, S.E.
 Salem, OR 97310

Party Chief: BILL HERMANN
 Notes: BILL HERMANN
 Witness: HAROLD HANSON
 DEAN TIMMERMAN

UNION COUNTY
 SURVEYOR

Received 7-1-92
 Filed 7-17-92
 By Andrew T. Blachly
 File No. 027-1992