

LEGEND

- ✱ FOUND G.P.S POINT
- ✦ FOUND MONUMENT
- SET RAIL ROAD SPIKE
- ✕ SET HUB & TACK
- SET P.K. NAIL

Scale 1" = 1330'

SURVEY FOR OREGON STATE HIGHWAY DIVISION 3812 ISLAND AVE. LA GRANDE OREGON 97858		SHEET NO. 1
UNION SECTION HIGHWAY 203 UNION COUNTY SEPTEMBER 15, 1991		TOTAL SHEETS 2

NARRATIVE

This survey is for Oregon State Highway project Union section to establish horizontal control.

Four traverse's were ran tying into G.P.S. points and found monuments. The first, a closed loop traverse, point numbers 1 through 8 utilized G.P.S. points RAMO and PUMP (closure 1:72031 Angular 0-00-04.3).

The second a closed loop traverse, point numbers 10 and 11 utilized G.P.S. point RAMO and traverse point 3 (closure 1:104115 Angular 0-00-03.4) it also tied into section corner T4S, R39E, and R40E S19/S30/S24/S25.

The third also a closed loop traverse, point numbers 15 through 17, utilized traverse point number 6 and 7 (closure 1:119789 Angular 0-00-10.3) it also tied into 1/16 corner T4S, R39E and R40E S19/S18. Point number 16 was set by Duane Griffith (OPLS 644) August 1977. Mr Griffith set a 4" x 24" concrete filled pipe with a 2" brass cap, (Survey # 72-77). However, when the sewer lines were installed this monument was destroyed. Anderson, Perry & Associates set a 1" pipe, to replace the destroyed monument, but did not file a survey. Gary Langlitz who works for Anderson, Perry & Associates tried to find the original notes but could not find any.

The fourth traverse, a connecting traverses (closure 1:20420 0-00-22.7) ran between section corner T4S, R39E and R40E S19/S30/S24/S25 and traverse point number 5, which included traverse point numbers 20 through 25.

Basis of Bearing

G.P.S. points RAMO and PUMP had Oregon State grid north zone coordinates established, then corrected to LDP, using a correction factor of .999761529. The coordinates were balanced by the compass method and the year of the Datum is 1983/91.

The equipment used for all four traverse's was a wild T1600 Theodolite, DI 1600 EDM, and GRE 4 data collector.

Bearing between PUMP and RAMO is S6-56-13W.

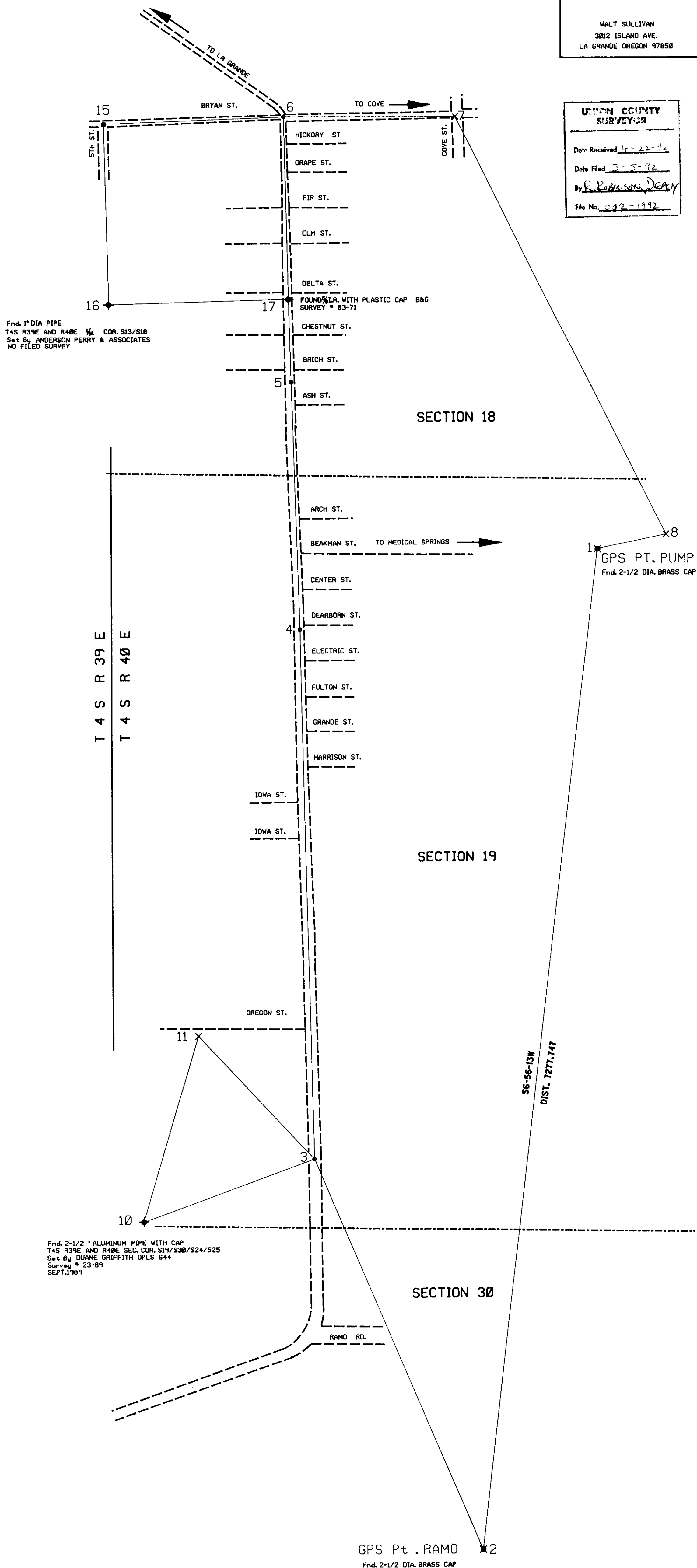
REGISTERED PROFESSIONAL LAND SURVEYOR

OREGON
WALTER R. SULLIVAN
OCT 6 1978
1926

WALT SULLIVAN
3812 ISLAND AVE.
LA GRANDE OREGON 97858

UNION COUNTY SURVEYOR

Date Received 4-22-92
Date Filed 5-5-92
By E. Robinson, DCA
File No. 012-1992



COORDINATE TABLE

Point #	Northing	Easting	Bearing	Distance
1	573266.884	8885266.362	S 6-56-13.71 W	7277.747
2	566841.536	8884387.353	N 23-22-06.84 W	3877.838
3	568866.157	8883166.858	N 1-18-16.56 W	3831.848
4	572696.284	8883879.627	N 1-49-22.88 W	1784.4239
5	574479.724	8883822.861	N 1-38-43.88 W	1926.319
6	576485.373	8882972.834	S 89-53-23.18 E	1261.419
7	576482.946	8884233.458	S 26-54-29.41 E	3488.855
8	573378.292	8885772.547	S 78-21-38.44 W	516.817
1	573266.884	8885266.362		
3	568866.157	8883166.858	S 78-21-07.48 W	1332.142
10	568418.239	8881912.278	N 17-01-08.88 E	1488.852
11	569756.982	8882322.848	S 43-28-51.87 E	1227.785
3	568866.157	8883166.858		
6	576485.373	8882972.834	S 87-51-14.87 W	1325.288
15	576355.752	8881647.763	S 1-38-23.38 E	1384.373
16	575851.914	8881685.898	N 88-24-09.32 E	1319.628
17	575888.788	8883884.197	N 1-23-57.53 W	1317.865
6	576485.373	8882972.834		

Found 1" DIA PIPE
T4S R39E AND R40E 1/4 COR. S13/S18
Set By ANDERSON PERRY & ASSOCIATES
NO FILED SURVEY

Found 2-1/2" ALUMINUM PIPE WITH CAP
T4S R39E AND R40E SEC. COR. S19/S30/S24/S25
Set By DUANE GRIFFITH OPLS 644
Survey # 23-89
SEPT. 1989

GPS PT. PUMP
Found 2-1/2" DIA. BRASS CAP

GPS Pt. RAMO
Found 2-1/2" DIA. BRASS CAP

COORDINATE TABLE

Point # Northing Easting Bearing Distance C.S.Number

Point #	Northing	Easting	Bearing	Distance	C.S.Number
6	576485.372	8882972.834	S 5-23-49.180 W	267.861	51-82
1800	576136.698	8882946.488			
6	576485.372	8882972.834	S 4-16-22.518 W	389.674	51-82
1801	576896.559	8882948.961			
6	576485.372	8882972.834	S 8-01-13.679 E	277.83	51-82
1802	576128.344	8882972.164			
6	576485.372	8882972.834	S 1-53-48.414	589.729	83-71
1803	575895.923	8882955.173			
6	576485.372	8882972.834	S 1-34-25.539 W	558.589	83-71
1804	575846.994	8882956.693			
6	576485.372	8882972.834	S 8-52-01.688 E	536.958	83-71
1805	575868.484	8882988.161			
6	576485.372	8882972.834	S 2-06-45.658 W	567.824	69-81
1806	575837.934	8882951.867			
6	576485.372	8882972.834	S 1-31-52.447 W	668.239	69-81
1807	575737.372	8882954.171			
6	576485.372	8882972.834	S 8-48-48.968 W	773.839	83-71
1808	575632.367	8882962.856			
6	576485.372	8882972.834	S 8-31-21.858 W	828.739	83-71
1809	575576.667	8882964.476			
6	576485.372	8882972.834	S 8-03-35.949 E	1287.549	83-71
1810	575117.824	8882973.382			
6	576485.372	8882972.834	S 2-25-56.264 E	1341.154	83-71
1812	575865.426	8883028.951			
6	576485.372	8882972.834	S 1-23-55.988 E	1317.879	83-71
1813	575888.685	8883080.187			
6	576485.372	8882972.834	S 8-32-44.926 E	1547.824	83-71
1814	574858.418	8882986.771			
6	576485.372	8882972.834	S 1-27-31.423 E	1577.899	83-71
1815	574826.784	8883012.182			
5	574479.724	8883022.868	N 9-16-45.135 E	124.276	83-71
1816	574682.374	8883042.899			
5	574479.724	8883022.868	S 20-06-53.389 E	64.558	83-71
1817	574548.337	8883045.859			
5	574479.724	8883022.868	S 1-58-08.139 E	178.888	83-71
1818	574389.812	8883028.331			
4	572696.284	8883079.626	S 9-21-38.983 E	298.814	45-84
1819	572418.858	8883126.786			
4	572696.284	8883079.626	S 7-18-58.888 E	398.325	45-84
1820	572384.855	8883129.318			
25	572824.865	8883181.999	S 87-28-51.878 E	285.948	142-78
1821	572811.643	8882816.387			
25	572824.865	8883181.999	S 4-52-48.811 W	398.486	183-78
1822	571627.816	8883868.719			
25	572824.865	8883181.999	S 3-37-17.238 W	497.548	183-78
1823	571527.919	8883878.547			
25	572824.865	8883181.999	S 1-36-59.789 W	817.648	67-71
1824	571287.542	8883878.932			
28	569328.166	8883169.253	N 8-09-16.699 W	665.814	29-81
1825	569985.978	8883167.456			
28	569328.166	8883169.253	S 5-13-19.286 E	213.733	66-79
1826	569187.328	8883188.786			
28	569328.166	8883169.253	S 4-09-17.863 E	356.465	66-79
1827	568964.638	8883195.879			
18	568418.248	8881912.278	N 17-01-08.88 E	1488.854	
11	569756.982	8882322.848	S 62-43-25.71 E	953.183	
28	569328.166	8883169.253	N 1-22-28.89 W	1818.384	
21	578338.179	8883145.828	N 1-55-35.44 W	377.345	
22	578787.318	8883132.334	N 1-34-35.77 W	531.199	
23	571238.388	8883117.719	N 1-12-49.89 W	257.986	
24	571496.157	8883112.256	N 1-06-41.18 W	528.888	
25	572824.865	8883181.999	N 1-54-31.38 W	671.712	
4	572696.284	8883879.627			

Scale 1" = 1330'

LEGEND

- ◆ FOUND MONUMENT
- SET RAIL ROAD SPIKE
- × SET HUB & TACK
- SET P.K. NAIL



SURVEY FOR
OREGON STATE HIGHWAY DIVISION
3812 ISLAND AVE.
LA GRANDE OREGON 97858

UNION SECTION

HIGHWAY 203 UNION COUNTY SEPTEMBER 15 1991

SHEET No.	2
TOTAL SHEETS	2

REGISTERED
PROFESSIONAL
LAND SURVEYOR

WALT SULLIVAN
3812 ISLAND AVE.
LA GRANDE OREGON 97858

UNION COUNTY
SURVEYOR

Date Received 4-1-92
Date Filed 5-12-92
By R. Robinson, Deputy
File No. 12-1992

