

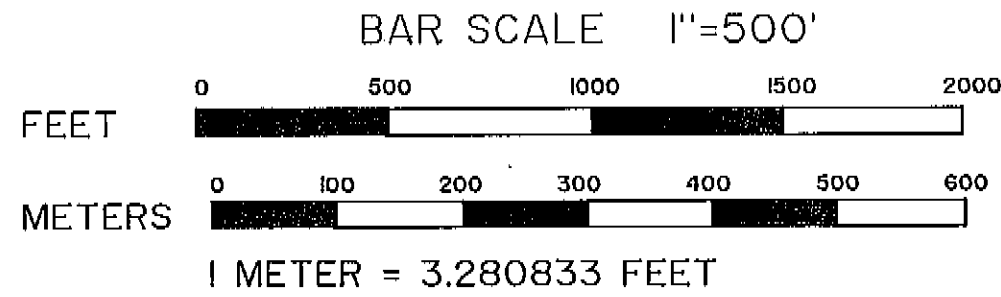
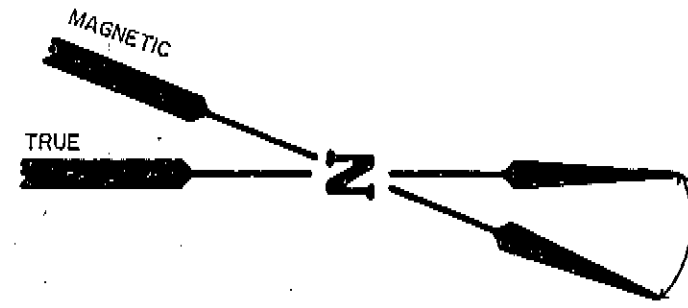
**HISTORY OF SURVEYS**

These sections were originally surveyed by Deputy F. W. Campbell in 1884 under contract No. 507. In 1976 RPE James D. Hanley dependently resurveyed the exterior of these sections and set the NE, NW, N1/4 & E1/4 corners of section 27 and the W1/4 corner of section 22 by proportionate measurement, and the E1/4 corner section 22 from original evidence. In 1973 PLS Ralph P. Thompson monumented the SE and SW corners of section 27 and the N1/4 corner of section 22 from original evidence. In 1971 PLS James G. Voelz monumented the NW corner of section 22 from original evidence. In 1977 PLS James H. Hambleton allegedly found original evidence at the NW corner of section 27 and set the W1/4 corner by proportion. In 1978 PLS Barry B. Barbour retraced the West line of section 27 and set the 1/4 corner by proportion. In 1981 PLS Barry B. Barbour retraced the East lines of sections 22 & 27.

**PLAT OF SURVEY**  
**SPANGLER 1991 CADASTRAL SURVEY**  
 U.S.D.A. FOREST SERVICE - REGION 6  
 UMATILLA NATIONAL FOREST  
 Contract No. 53-04R3-1-20  
 Sections 22 and 27 T. 4 N., R 40 E., W.M.  
 Union County, Oregon

SHEET 1 of 2

**UNION COUNTY SURVEYOR**  
 Date Received 12/19/91  
 Date Filed 1/22/92  
 By *Wally Murphy*  
 File No. 063-1991



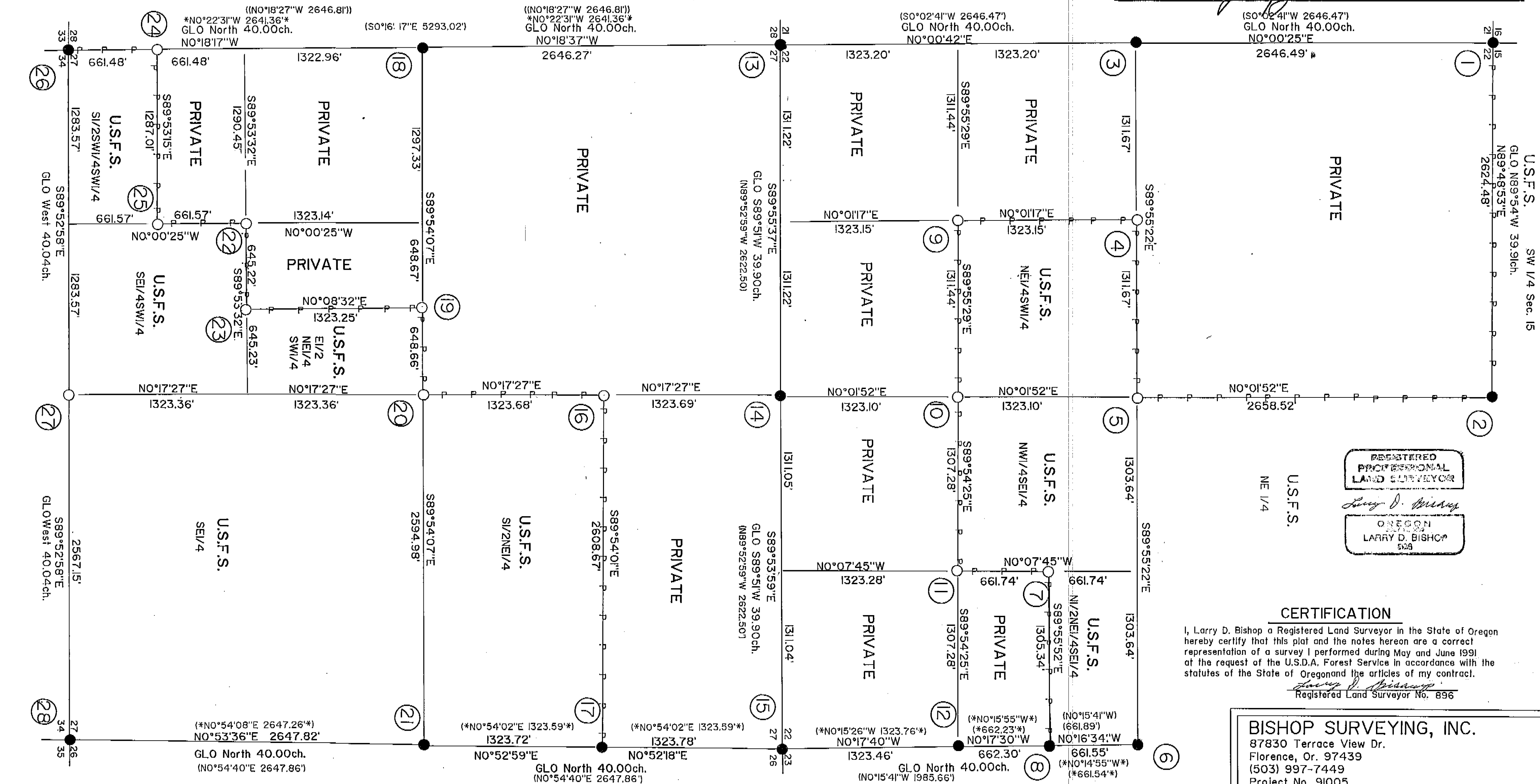
**LEGEND**

- Found monument and accessories of record
- Set 2 1/2" X 30" Alum. pipe and cap with magnet
- Boundary line posted with 6" steel posts with sign 54-2
- (NO°00'E 0.00')
- (\*) Course per PLS James D. Hanley in 1976
- (\*) Course per PLS Barry B. Barbour in 1981
- (\*) Course per PLS Barry B. Barbour in 1978
- (\*) course per PLS James H. Hambleton in 1977

Date July 10, 1991  
 Instruments Topcon GTS-1, Wild T-16, Lietz Red 2L  
 Purpose Monument property corners and post boundary lines to Region 6 standards  
 Bearings All bearings are based on a solar observation (hour angle) near the South 1/4 corner Section 27  
 Procedure All existing monuments except the West 1/4 of section 27 set by Hambleton were accepted in place. An evaluation of the evidence at the NW corner of section 27 discovered nothing in conformance with the original corner. Therefore the iron rod set by Hambleton and the 1/4 corner to the south were not accepted. After a diligent search for original evidence at the SW1/4 corner of section 27 it was concluded that any evidence which may have existed was destroyed by logging-set at proportion. Controlling corners were tied and points from which to offset posts and monument corners were part of random, closed conventional Theodolite/EDM traverses.  
 Corners Guard posts were set on each line at property corners with signs 54-2 and 54-9. Where none existed at other than property corners a guard post was set with sign 54-9 only.  
 BT's All bearing trees have signs 54-4 or 9 and 54-3, a 6" red band and the blaze painted red. Bearing trees marked have a 1" brass disk stamped PLS 896 nailed flush between the B and T.  
 Field books The notes of this survey are contained in bound, waterproof books numbered 1 to 3, the originals of which are on file at the office of Bishop surveying, Inc and copies furnished the Umatilla N.F.

**NARRATIVE**

EXAMINED AND ACCEPTED FOR THE U.S. FOREST SERVICE  
 THIS 5<sup>TH</sup> DAY OF DECEMBER, 1991  
*Dennis F. Hayward* COR  
 I CERTIFY THAT THIS SURVEY WAS PERFORMED AT THE REQUEST OF THE *(Umatilla)*  
 NATIONAL FOREST SUPERVISOR  
 SIGNATURE *Wally Murphy Acting P.S.* DATE 12-5-91



REGISTERED PROFESSIONAL LAND SURVEYOR  
*Larry D. Bishop*  
 OREGON  
 LARRY D. BISHOP  
 529

**CERTIFICATION**

I, Larry D. Bishop a Registered Land Surveyor in the State of Oregon hereby certify that this plat and the notes hereon are a correct representation of a survey I performed during May and June 1991 at the request of the U.S.D.A. Forest Service in accordance with the statutes of the State of Oregon and the articles of my contract.  
*Larry D. Bishop*  
 Registered Land Surveyor No. 896

**BISHOP SURVEYING, INC.**  
 87830 Terrace View Dr.  
 Florence, Or. 97439  
 (503) 997-7449  
 Project No. 91005

SEE NARRATIVE Drawn # 1/19

Survey Number 063 - 1991

PLAT OF SURVEY  
**SPANGLER 1991 CADASTRAL SURVEY**  
 U.S.D.A. FOREST SERVICE - REGION 6  
 UMATILLA NATIONAL FOREST  
 Contract No. 53-04R3-I-20  
 Sections 22 and 27 T. 4 N., R40 E., W.M.  
 Union County, Oregon

**SHEET 2 of 2**

- ① FOUND: 2 1/2" gal. steel pipe with a 3" brass cap  
 STAMPED: Orig. 24" now 20" rotted Spruce snag I2'  
 COR fall S39E 21.2'-BT visible on lower blaze  
 T4N R40E upper blaze gone  
 S16 | S15 1971 22" now 28" Wh. Fir N17W 24.0'  
 S21 | S22 Scribing visible on nearly healed blaze  
 ORE LIC 381 1971 16" now 38" wind sheared, broken  
 1971 D-Fir stub N41E 55.4' scribing visible  
 on upper blaze  
 1971 7" now uprooted 9" Spruce-stood S12W 26.2' scribing  
 visible on double blaze  
 1971 19" now 20" uprooted, sawed Spruce stump-stood S18E 41.1'  
 41.1' scribing visible on lower blaze  
 MARKED: 5" Wh. fir S7 1/2W 24.3' scribed T4NR40ES21BT  
 11" " " S1E 29.2' scribed T4NR40ES22BT  
 13" " " N56 1/4E 40.7' scribed T4NR40ES15BT
- ② FOUND: 1" iron pipe with a 2 1/2" brass cap  
 STAMPED: Orig. 28" now 36" D-Fir snag N54E (record N60E)  
 T4N R40E 6.6' to face-scribing visible on upper blaze  
 S15 Orig. 18" now 20" Wh. Fir snag S53W 9.9' to face  
 1/4 S22 scribing visible on upper blaze  
 ORLS 506 MARKED:  
 1973 9" Wh. Fir N86W 46.5' scribed I/4S15BT  
 15" " " N4E 73.5' " " "  
 22" " " N78 1/4E 70.9' " " "  
 Drove 5/8" iron rod in center of 20" wh. Fir  
 stump with red plastic cap mkd. PLS 896 S12°33'E 61.05'
- ③ FOUND: 2 1/2" gal. steel pipe with a 2 1/2" brass cap  
 STAMPED: 1976 6" now 6" Wh. fir S39W 16.1' scribing visible  
 T4N R40E on healed double blaze  
 1/4 1976 10" now 12" Wh. Fir N31E 5.0' healed double  
 S21 | S22 blaze  
 RPE 2808 MARKED:  
 1976 6" Wh. Fir West 18.0' scribed I/4S21BT  
 7" " " S76E 4.2' " " I/4S22BT
- ④ Set mon. 28" in ground-no stone available  
 STAMPED: MARKED:  
 T4N R40E 16" Larch NG1W 6.8' scribed CWI/16S22BT  
 W1/16 11" D-Fir S77 1/2E 5.2' scribed CWI/16S22BT  
 C  
 S22  
 1991  
 LS 896
- ⑤ Set mon. 28" in ground-no stone available  
 STAMPED: MARKED:  
 T4N R40E 10" Larch N 3/4W 30.8' scribed CI/4S22BT  
 CI/4 11" " S8 1/4W 44.5' " " XBT  
 S22 11" " S54W 37.2' " " CI/4S22BT  
 1991 7" " S21 3/4W 42.7' " " "  
 LS 896
- ⑥ FOUND: 2 1/2" gal. steel pipe with a 2 1/2" brass cap  
 STAMPED: 1976 12" now 14" Spruce N77W 24.2' scribing  
 T4N R40E visible on double blaze  
 1/4 1976 8" now 11" Spruce N15E (record N21E) 23.0'  
 S22 | S23 scribing visible on nearly healed double blaze  
 RPE 2808 MARKED:  
 1976 16" Larch S21 3/4W 23.8' scribed I/4S22BT  
 18" Spruce S55E 37.2' scribed I/4S23BT
- ⑦ Set mon. 26" in ground-no stone available  
 STAMPED: MARKED:  
 T4N R40E 18" Larch N46 1/4W 33.7' scribed CNSEI/64S22BT  
 CNSE 12" Wh. Fir N24 1/2E 45.4' scribed " "  
 1/64  
 S22  
 1991  
 LS 896
- ⑧ FOUND: 2 1/2" gal. steel pipe with a 2 1/2" brass cap  
 STAMPED: 1976 6" now 9" Lodgepole pine S20E 42.0' scribing  
 T4N R40E visible on partially healed blaze  
 S22 1/64 S23  
 RPE 2808 1976 16" now 16" Lodgepole pine N54W 202.4'  
 1976 full scribing visible
- ⑨ Set mon. 27" in ground-no stone available  
 STAMPED: MARKED:  
 T4N R40E 11" Larch N75W 13.4' scribed SWI/16S22BT  
 SWI/16 7" Larch N19 1/4E 10.3' scribed SWI/16S22BT  
 S22  
 1991  
 LS 896
- ⑩ Set mon. 26" in ground-no stone available  
 STAMPED: MARKED:  
 T4N R40E 13" D-Fir S43W 16.4' scribed CSI/16S22BT  
 C 6" Wh. Fir N5 3/4E " " "  
 S1/16 | S22  
 C  
 1991  
 LS 896

- ⑪ Set mon. 26" in ground-no stone available  
 STAMPED: MARKED:  
 T4N R40E 16" Spruce N57 1/2W 27.9' scribed SEI/16S22BT  
 SEI/16 8" " N38 1/2E 21.5' " " "  
 S22  
 1991  
 LS 896
- ⑫ FOUND: 2 1/2" gal. steel pipe with a 2 1/2" brass cap  
 STAMPED: 1981 24" now 20" Lodgepole pine N58E 40.0' (record 39.6')  
 T4N R40E scribing visible on double blaze  
 S1/16 1981 26" now 26" Spruce S70W 67.7' scribing visible  
 S22 | S23 on double blaze (record N70W)  
 ORLS 1051  
 1981
- ⑬ FOUND: 2 1/2" gal. steel pipe with a 2 1/2" brass cap  
 STAMPED: 1976 7" now 9" Wh. Fir N21E 20.4' scribing visible  
 T4N R40E on double blaze  
 S21 | S22 1976 10" now 12" Spruce N20W 55.6' healed double blaze  
 S28 | S27 1976 14" now 17" Larch S47W 59.0' " " "  
 RPE 2808 1976 9" now 10" Spruce S70E 46.0' " " "  
 1976 5/8" iron rod with plastic cap S41°23'48"W 13.68'  
 Set by Hambleton-not accepted by me  
 ⑭ FOUND: 2 1/2" gal. steel pipe with a 2 1/2" brass cap  
 STAMPED: 1976 11" now 14" D-Fir S45W 45.5' healed double blaze  
 T4N R40E 1976 9" now 12" Spruce N63E 37.3' (record 37.0')  
 1/4 S22 healed double blaze  
 S27 MARKED:  
 RPE 2808 11" D-Fir S9W 26.1' scribed I/4S27BT  
 1976 13" Lodgepole pine N46E 19.0' scribed I/4S22BT
- ⑮ FOUND: 2 1/2" gal. steel pipe with a 2 1/2" brass cap  
 STAMPED: 1976 8" Fir now 9" Spruce N67 1/2W 96.5' (record N67W  
 T4N R40E 96.8') healed double blaze  
 S22 | S23 1981 9" Fir now 12" Spruce snag N75 3/4E 243.9' (record  
 S27 | S26 N76E) scribing visible on double blaze  
 RPE 2808 1976 10" Fir now 14" Spruce S47 3/4E 363.5' (record S47E  
 364.0') healed double blaze  
 1976 1976 12" Fir now 14" Spruce S65W 204.0' (record S66W  
 204.35') healed double blaze  
 MARKED:  
 16" Spruce N77 3/4E 258.1' scribed T4NR40ES23BT
- ⑯ Set mon. 16" in ground to bedrock in a mound of stone 3' base to top  
 STAMPED: MARKED:  
 T4N R40E 13" Larch N2 1/4E 31.1' scribed CNI/16S27BT  
 20" Wh. Fir S85 1/2E 19.0' scribed CNI/16S27BT  
 C  
 NI/16 | S27  
 C  
 1991  
 LS 896
- ⑰ FOUND: 2 1/2" gal. steel pipe with a 2 1/2" brass cap  
 STAMPED: 1981 9" now 11" Wh. Fir S41E 48.7' scribing visible  
 T4N R40E 1981 8" now 10" Larch S53W 43.0' " " "  
 NI/16  
 S27 | S26  
 OR PLS 1051  
 1981
- ⑱ FOUND: Two 2 1/2" gal. steel pipe with a 2 1/2" brass cap  
 STAMPED: 1977 monument S42°33'33"W 6.68' (record S42°08'26"W 6.66') - Set by Hambleton-  
 T4N R40E 1977 9" now 12" Larch S10 1/2E 30.6' from 1978 monument not accepted by me  
 1/4 (record S22E 26.6' from 1977 monument) scribing visible  
 S28 | S27 1977 17" now 18" Larch N79 1/2W 48.2' from 1978 monument  
 OR PLS 1051 (record N71W 44.1' from 1977 monument) scribing visible  
 1978 1978 10" now 12" Larch N49 1/4E 19.5' (record N47E 19.7')  
 scribing visible on double blaze  
 1978 12" now 14" Larch N52 1/2 W 31.1' (record N54W 31.2')  
 scribing visible on double blaze
- ⑲ Set mon. 28" in ground-no stone available  
 STAMPED: MARKED:  
 T4N R40E 22" Wh. Fir S77 1/4E 24.4' scribed CEWI/64S27BT  
 CEW 1/64 12" " " S10 1/4E 42.7' " " "  
 S27  
 1991  
 LS 896

- ⑳ Set mon. 26" in ground--no stone available  
 STAMPED: MARKED:  
 T4N R40E 12" Larch N55 3/4W 17.4' scribed XBT  
 CI/4 13" Larch N14 3/4E 19.4' scribed CI/4S27BT  
 S27 9" Larch S79 1/2E 13.0' " " "  
 1991 11" D-Fir S8 1/4W 24.0' " " "  
 LS 896
- ㉑ FOUND: 2 1/2" gal. steel pipe with a 2 1/2" brass cap  
 STAMPED: 1976 9" now 10" Larch S50W 17.3' scribing visible on double blaze  
 T4N R40E 1976 8" now 10" Larch S62E 56.5' healed double blaze  
 1/4 MARKED:  
 S27 | S26 7" Larch S88 1/2W 10.2' scribed I/4S27BT  
 RPE 2808 10" Wh. Fir N68E 43.7' " " I/4S26BT  
 1976
- ㉒ Set mon. 26" in ground--no stone available  
 STAMPED: MARKED:  
 T4N R40E 12" Larch S70 1/2W 25.0' scribed SWI/16S27BT  
 SWI/16 6" Wh. Fir S56 3/4E 17.5' " " "  
 1991  
 LS 896
- ㉓ Set mon. 28" in ground--no stone available  
 STAMPED: MARKED:  
 T4N R40E 7" Spruce N80 1/2E 8.8' scribed CESWI/64S27BT  
 CESW 7" " S12E 27.0' scribed XBT  
 1/64  
 S27  
 1991  
 LS 896
- ㉔ Set mon. 29" in ground--no stone available  
 STAMPED: MARKED:  
 T4N R40E 10" Larch S47W 9.4' scribed SSI/64S28BT  
 SSI/64 10" Larch S73E 4.0' scribed SSI/64S27BT  
 S28 | S27  
 1991  
 LS 896
- ㉕ Set mon. 28" in ground--no stone available  
 STAMPED: MARKED:  
 T4N R40E 8" Spruce N85 1/2E 25.8' scribed CSSWI/64S27BT  
 CSSW 7" wh. Fir S25E 6.9' scribed CSSWI/64S27BT  
 1/64  
 1991  
 LS 896
- ㉖ FOUND: 1" gal. steel pipe with a 2 1/2" brass cap  
 STAMPED: Orig. 30" Spruce now 40+ Wh. Fir uproot S88W 56.8' scribing visible  
 T4N R40E 1973 13" now down, sawed 13" Wh. Fir -stood N40W 14.3' scribing visible on double blaze  
 S28 | S27 1973 8" now 9" Wh. Fir N24E 57.2' (record 56.7') scribing visible on double blaze  
 S33 | S34 1973 11" now 16" Wh. Fir S84E 16.8' (record 16.0') scribing visible on nearly healed double blaze  
 ORLS 506 1973 1973 12" now 18" Wh. Fir S48W 11.0' (record S37W 10.7') healed double blaze  
 1973 MARKED:  
 14" Wh. Fir N63 1/2W 53.2' scribed T4NR40ES28BT
- ㉗ Set mon. 28" in ground--no stone available  
 STAMPED: MARKED:  
 T4N R40E 16" Wh. Fir N5 1/2W 64.2' scribed I/4S27BT  
 S27 9" " " N19 3/4E 30.3' scribed I/4S27BT  
 1/4 S34 36" Wh. Fir S76 1/4E 10.5' scribed I/4S34BT  
 LS 896 10" Wh. Fir S32 1/2E 26.3' scribed I/4S34BT  
 1991
- ㉘ FOUND: 1" gal. steel pipe with a 2 1/2" brass cap  
 STAMPED: 1981 10" now 13" D-Fir N27E 33.6' (record 33.3') healed double blaze  
 T4N R40E 1973 16" now 20" D-Fir N20W 46.5' (record 46.0') healed double blaze  
 S27 | S26 1973 10" now 12" Spruce S64E 18.8' (record S60E 18.4') healed double blaze  
 S34 | S35 1973 8" now 10" Spruce S64W 52.7' healed double blaze  
 ORLS 506 1973 1973 10" Pine now 20" Wh. Fir snag N45E 45.1' (record 67 lks) axe marks visible on  
 nearly healed blaze  
 Orig. 20" now 40" rotted D-Fir stub S10E 31.2' (record 45 lks) full scribing visible on pitched slab  
 Orig. 24" now 32" Wh. Fir snag S56W 61.8' (record 93 lks) healed double blaze

520  
 LARRY D. BISHOP  
 1991  
 REGISTERED  
 LAND SURVEYOR  
 UMATILLA NATIONAL FOREST

UNION COUNTY  
 SURVEYOR  
 Date Received 12/19/91  
 Date Filed 1/22/92  
 By *Larry D. Bishop*  
 File No. 063-1991

BISHOP SURVEYING, INC.  
 87830 Terrace View Dr.  
 Florence, Or. 97439  
 (503) 997-7449  
 Project No. 91005

Survey Number 063 - 1991