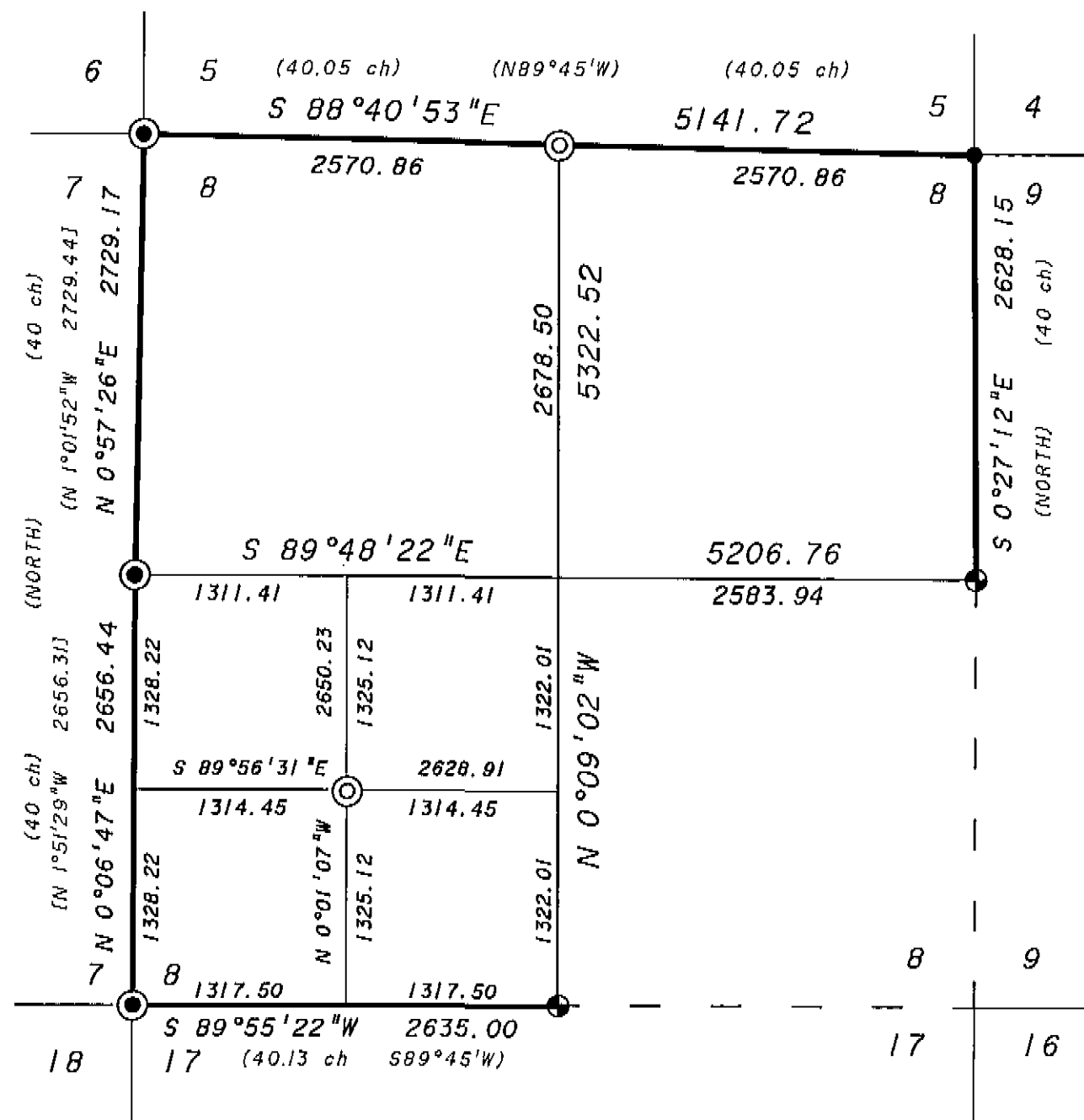


T 5 S, R 41 E, W.M.



SCALE: 1"=1000"

BASIS OF BEARING

Solar observations taken at a point 2100 feet, South and 750 feet East of the South 1/4 corner of Section 8. The hour angle method was used.

NARRATIVE

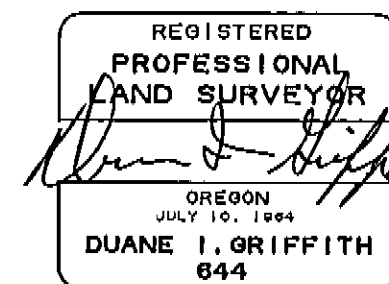
This survey was made for Boise Cascade Corporation as requested by Guy Francy. The purpose was to subdivide the section and place the SW 1/16th corner. The section was originally surveyed by H. M. Thatcher under GLO contract no. 320, dated April 1, 1879. JUB Engineers, Inc. made an extensive survey in the area in 1975, in which they recovered and set several corners. See map of survey no. 75-016. The BLM is now surveying the entire Township to establish corners for the Forest Service, this survey is not complete and has not been recorded. The East and South quarter corners are BLM remonumentations based on original evidence. I was forced to proportion the North quarter corner, the original appears to have been destroyed by a logging road and related operations. I find no unusual conditions in this survey.

LEGEND

- Found brass cap monument, survey no. 75-016
- Found aluminum cap, by Sundet, OPLS 1664
- Found standard B.L.M. brass cap.
- ⊙ Set 2-1/2" X 30" aluminum pipe with cap marked as shown, see monumentation sheet filed separately.
- () GLO Record bearing and distance.
- [] JUB Bearing and distance. Grid Basis.

REFERENCE MATERIAL

Government Land Office notes.
Map of Survey No. 75-016



UNION COUNTY SURVEYOR	
Date Received	4/23/91
Date Filed	4/23/91
By	Guy Blake
File No.	038-1991

BAGETT - GRIFFITH & ASSOCIATES LaGrande, Oregon Map of Survey		
Section 8 T 5 S, R 41 E, W. M.		
<small>UNION COUNTY, OREGON</small>		
SURVEYED FOR	BOISE CASCADE CORPORATION	
SURVEYED BY	dig	April, 1991
Scale: 1" = 1000'	Drawn by: Lucy	April, 1991

SURVEY NUMBER 038-1991