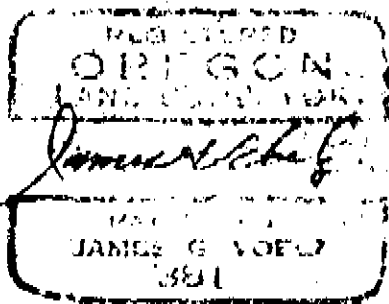


BORDEN PLANT SITE
ISLAND CITY, OREGON

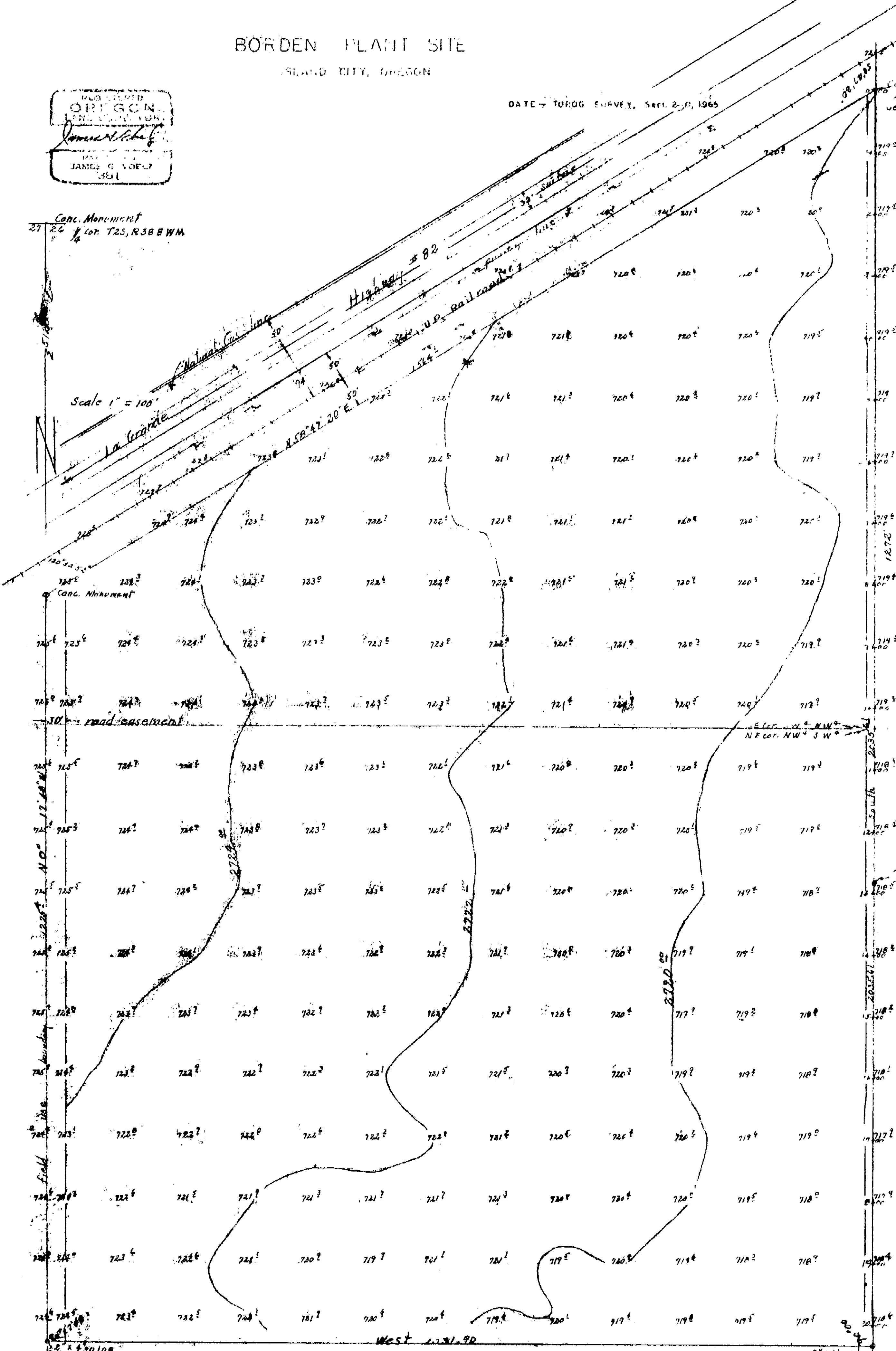
DATE - TOROG SURVEY, Sept. 2-10, 1965

Conc Monument
2720.42
sea level datum.



Conc. Monument
27
26 1/4 cor. T2S, R3BEWM

Scale 1" = 100'



E. Cor. NW 1/4 NW 1/4
NE Cor. NW 1/4 SW 1/4

2" iron pipe 4" High
SW Cor. Boise
cascades

UNITED COUNTY SURVEYOR	
Date Received	3-9-91
Date Filed	3-9-91
By	Greg Black
File No.	031-1991

34 35 S.E. cor. T2S R3BEWA
Section corner not in place;
could not be found.

MAP OF SURVEY 31-1991
U.R. 10